



# Assembly and operating manual

## SPG 100

### 2-finger parallel grippers

Translation of original operating  
manual

## Imprint

### Copyright:

This manual is protected by copyright. The author is SCHUNK SE & Co. KG.  
All rights reserved.

### Technical changes:

We reserve the right to make technical improvements.

**Document number:** 0389423

**Version:** 06.00 | 12/16/2025 | en-US

Dear Customer

Dear Customer,

Thank you for putting your trust in our products and our family-owned company, the leading technology supplier of robots and production machines.

Our team is always available to answer any questions on this product and other solutions. We look forward to your challenging questions. We will find a solution!

Best regards,

Your SCHUNK team

Customer Management

Tel. +49-7133-103-2503

Fax +49-7133-103-2189

cmg@de.schunk.com



**Please read the operating manual in full and keep it close to the product.**

## Table of Contents

<b>1</b>	<b>General .....</b>	<b>5</b>
1.1	About this Manual .....	5
1.1.1	Illustration of safety notes .....	5
1.1.2	Applicable documents .....	6
1.2	Warranty .....	6
1.3	Scope of delivery.....	6
1.3.1	Accessory kit .....	6
1.4	Accessories .....	7
1.4.1	Sensors .....	7
1.4.2	Seal kit .....	7
<b>2</b>	<b>Basic safety notes.....</b>	<b>8</b>
2.1	Appropriate use .....	8
2.2	Structural changes.....	8
2.3	Spare parts .....	8
2.4	Gripper fingers .....	8
2.5	Ambient conditions and operating conditions .....	9
2.6	Personnel qualification .....	9
2.7	Personal protective equipment .....	10
2.8	Notes on safe operation.....	11
2.9	Transport.....	11
2.10	Malfunctions.....	11
2.11	Disposal .....	12
2.12	Fundamental dangers .....	12
2.13	Notes on particular risks .....	13
<b>3</b>	<b>Technical data .....</b>	<b>14</b>
<b>4</b>	<b>Assembly.....</b>	<b>15</b>
4.1	Mechanical connection.....	15
4.2	Pneumatic connection.....	16
4.3	Installing the sensors .....	18
4.3.1	Programmable magnetic switch MMS 30 .....	18
4.3.2	Inductive proximity switch IN 80 .....	20
<b>5</b>	<b>Troubleshooting.....</b>	<b>23</b>
5.1	Product is not moving .....	23
5.2	Product does not execute a complete stroke.....	23
5.3	Product opens or closes abruptly .....	23
5.4	Gripping force gets weaker.....	24
5.5	Product does not achieve the opening and closing times .....	24

<b>6 Maintenance</b> .....	<b>25</b>
6.1 Notes.....	25
6.2 Maintenance and care intervals .....	25
6.3 Lubricants/greasing areas (basic lubrication) .....	25
6.4 Disassembling the gripper .....	26
6.5 Servicing and assembling the product .....	27
6.5.1 Tightening torque for screws .....	27
6.6 Assembly drawing .....	28
<b>7 Translation of the original declaration of incorporation</b> .....	<b>29</b>
<b>8 UKCA declaration of incorporation</b> .....	<b>30</b>
<b>9 Information on the RoHS Directive, REACH Regulation and Substances of Very High Concern (SVHC)</b> .....	<b>31</b>

# 1 General

## 1.1 About this Manual

This manual contains important information for the safe, correct use of the product.

The manual is an integral part of the product and must be kept accessible by personnel at all times.

Personnel must have read and understood this manual before beginning any work. The observance of all safety notes in this manual is the precondition for all safe working.

Besides this manual, other documents which apply are those listed under ▶ 1.1.2 [ 6].

**NOTE:** The illustrations in this manual are intended to provide a basic understanding and may deviate from the actual version.

### 1.1.1 Illustration of safety notes

To make risks clear, the following signal words and symbols are used for safety notes.



#### **⚠ DANGER**

##### **Danger to individuals!**

Ignoring a safety note such as this will certainly lead to irreversible injury and even death.



#### **⚠ WARNING**

##### **Danger to individuals!**

Ignoring a safety note such as this can lead to irreversible injury and even death.



#### **⚠ CAUTION**

##### **Danger to individuals!**

Non-observance can cause minor injuries.

#### **NOTICE**

##### **Material damage!**

Information about avoiding material damage.

### 1.1.2 Applicable documents

- General terms of business \*
- Catalog data sheet of the purchased product \*
- Assembly and operating manuals of the accessories \*

The documents labeled with an asterisk (\*) can be downloaded from [schunk.com/downloads](https://schunk.com/downloads).

### 1.2 Warranty

If the product is used as intended, the warranty is valid for 24 months from the date of delivery from the production facility under the following conditions:

- Observance of the specified maintenance and lubrication intervals
- Observance of the ambient conditions and operating conditions

Parts touching the workpiece and wearing parts are not part of the warranty.

### 1.3 Scope of delivery

The scope of delivery includes:

- 2-finger parallel grippers SPG in the version ordered
- Safety information (product-specific instructions available online)
- Accessory pack

#### 1.3.1 Accessory kit

Contents of the accessory kit:

- 3x O-ring
- 6x Centering sleeve

Accessory pack for	ID number
SPG 100	5510313
SPG 100 – High-temperature (HT)	395510313

Tab.: ID.-No. of the accessory pack

## 1.4 Accessories

A wide range of accessories is available for this product.

For information regarding which accessory articles can be used with the corresponding product variants, see catalog data sheet.

### 1.4.1 Sensors

Designation	Type
Magnetic switch	MMS
Inductive proximity switches	IN

- Exact type designation of the compatible sensors see catalog.
- Information on handling sensors is available at [schunk.com](http://schunk.com) or from SCHUNK contact persons.
- For mounting the sensors, mounting kits are partly necessary.

### 1.4.2 Seal kit

Seal kit for	ID number
SPG 100	0370889
SPG 100 - High-temperature (HT)	39370889

*Tab.: ID.-No. of the seal kit*

contents of the sealing kit, ► 6.6 [  28 ].

## 2 Basic safety notes

### 2.1 Appropriate use

The product is designed exclusively for gripping and temporarily holding workpieces or objects.

- The product may only be used within the scope of its technical data, ▶ 3 [14].
- The product is intended for installation in a machine/ automated system. The applicable guidelines for the machine/ automated system must be observed and complied with.
- The product is intended for industrial and industry-oriented use. Its use outside enclosed spaces is only permitted if suitable protective measures are taken against outdoor exposure. The product is not suitable for use in salty air.
- The product can be used within the permissible load limits and technical data for holding workpieces during simple machining operations, but is not a clamping device according to EN 1550:1997+A1:2008.
- Appropriate use of the product includes compliance with all instructions in this manual.
- Any use that exceeds or differs from the appropriate use is regarded as misuse.

### 2.2 Structural changes

#### Implementation of structural changes

Modifications, changes or reworking, e.g. additional threads, holes, or safety devices, can damage the product or impair its functionality or safety.

- Structural changes should only be made with the written approval of SCHUNK.

### 2.3 Spare parts

#### Use of unauthorized spare parts

Using unauthorized spare parts can endanger personnel and damage the product or cause it to malfunction.

- Use only original spare parts and spares authorized by SCHUNK.

### 2.4 Gripper fingers

#### Requirements of gripper fingers

Accumulated energy can make the product unsafe and risk the danger of serious injuries and considerable material damage.

- Only change gripper fingers if no residual energy can be released.
- Make sure that the product and the gripper finger are sufficient in size for the workpiece.

## 2.5 Ambient conditions and operating conditions

### Required ambient conditions and operating conditions

Incorrect ambient and operating conditions can make the product unsafe, leading to the risk of serious injuries, considerable material damage and/or a significant reduction to the product's life span.

- Make sure that the product is only used within its defined application parameters, ▶ 3 [14].
- Make sure that the product is a sufficient size for the workpiece.
- Make sure that the environment is free from splash water and vapors as well as from abrasion or processing dust. Exceptions are products that are designed especially for contaminated environments.

## 2.6 Personnel qualification

### Inadequate qualification of personnel

Work on the product by inadequately qualified personnel can lead to serious injuries and considerable material damage.

- Order all work to be performed only by appropriately qualified personnel.
- Personnel must have read and understood the complete manual before beginning any work on the product.
- Observe national accident prevention regulations and the general safety notes.

The following personnel qualifications are required for the various types of work on the product:

#### Trained electrician

Due to their technical training, knowledge and experience, trained electricians are able to work on electrical systems, recognize and avoid possible dangers and know the relevant standards and regulations.

#### Qualified personnel

Due to its technical training, knowledge and experience, qualified personnel is able to perform the delegated tasks, recognize and avoid possible dangers and knows the relevant standards and regulations.

- Instructed person** Instructed persons have been instructed by the user regarding the tasks entrusted to them and the potential dangers of inappropriate behavior.
- Manufacturer's service personnel** The manufacturer's service personnel have the specialized training, knowledge, and experience to perform the work entrusted to them and to recognize and avoid potential dangers.

## 2.7 Personal protective equipment

### Use of personal protective equipment

Personal protective equipment serves to protect staff in the event of a danger that may interfere with their health or safety at work.

- When working on and with the product, observe the occupational health and safety regulations and wear the required personal protective equipment.
- Observe the valid safety and accident prevention regulations.
- Wear protective gloves to guard against sharp edges and corners or rough surfaces.
- Wear heat-resistant protective gloves when handling hot surfaces.
- Wear protective gloves and safety goggles when handling hazardous substances.
- Wear close-fitting protective clothing and also wear long hair in a hairnet when dealing with moving components.

## 2.8 Notes on safe operation

### Incorrect manner of working by personnel

An incorrect manner of working can make the product unsafe and risk the danger of serious injuries and considerable material damages.

- Avoid any manner of working that may interfere with the function and operational safety of the product.
- Use the product as intended.
- Observe the safety notes and assembly instructions.
- Do not expose the product to any corrosive media. Products for special ambient conditions are excluded.
- Rectify malfunctions as soon as they occur.
- Observe the care and maintenance instructions.
- Observe the current safety, accident prevention, and environmental protection regulations for the application field of the product.

## 2.9 Transport

### Handling during transport

Incorrect handling during transport can make the product unsafe and risk serious injuries and considerable material damage.

- When handling heavy weights, use lifting equipment to lift the product and transport it by appropriate means.
- During transport and handling, secure the product to prevent it from falling.
- Do not walk under suspended loads.

## 2.10 Malfunctions

### Behavior in case of malfunctions

- Immediately remove the product from operation and report the malfunction to the responsible departments/persons.
- Order appropriately trained personnel to rectify the malfunction.
- Do not recommission the product until the malfunction has been rectified.
- Test the product after a malfunction to establish whether it still functions properly and no increased risks have arisen.

## 2.11 Disposal

### Handling of disposal

Incorrect handling during disposal can make the product unsafe and risks serious injuries and considerable material and environmental harm.

- Follow local regulations on dispatching product components for recycling or orderly disposal.

## 2.12 Fundamental dangers

### General

- Observe safety distances.
- Never deactivate safety devices.
- Before commissioning the product, take appropriate protective measures to secure the danger zone.
- Disconnect power sources before installation, modification, maintenance, or calibration. Ensure that no residual energy remains in the system.
- If the energy supply is connected, do not move any parts by hand.
- Do not reach into the open mechanism or movement area of the product during operation.

## 2.13 Notes on particular risks



### **⚠ DANGER**

#### **Risk of fatal injury from suspended loads!**

Falling loads can cause serious injuries and even death.

- Stand clear of suspended loads and do not step within their swiveling range.
- Never move loads without supervision.
- Do not leave suspended loads unattended.
- Wear suitable protective equipment.



### **⚠ WARNING**

#### **Risk of injury from objects falling and being ejected!**

Falling and ejected objects during operation can lead to serious injury or death.

- Take suitable protective measures to secure the danger zone.



### **⚠ WARNING**

#### **Risk of injury due to sudden movements!**

If the energy supply is switched on or if residual energy is still present in the system, this can cause components to move unexpectedly, which may result in serious injuries.

- Before starting any work on the product: Switch off the energy supply and secure against re-connection.
- Ensure that no residual energy remains in the system.



### **⚠ WARNING**

#### **Risk of injury from crushing and impacts!**

Serious injury could occur during movement of the base jaw, due to breakage or loosening of the gripper fingers or if the workpiece is lost.

- Wear suitable protective equipment.
- Do not reach into the open mechanism or the movement area of the product.



### **⚠ WARNING**

#### **Risk of injury from sharp edges and corners!**

Sharp edges and corners can cause cuts.

- Wear suitable protective equipment.

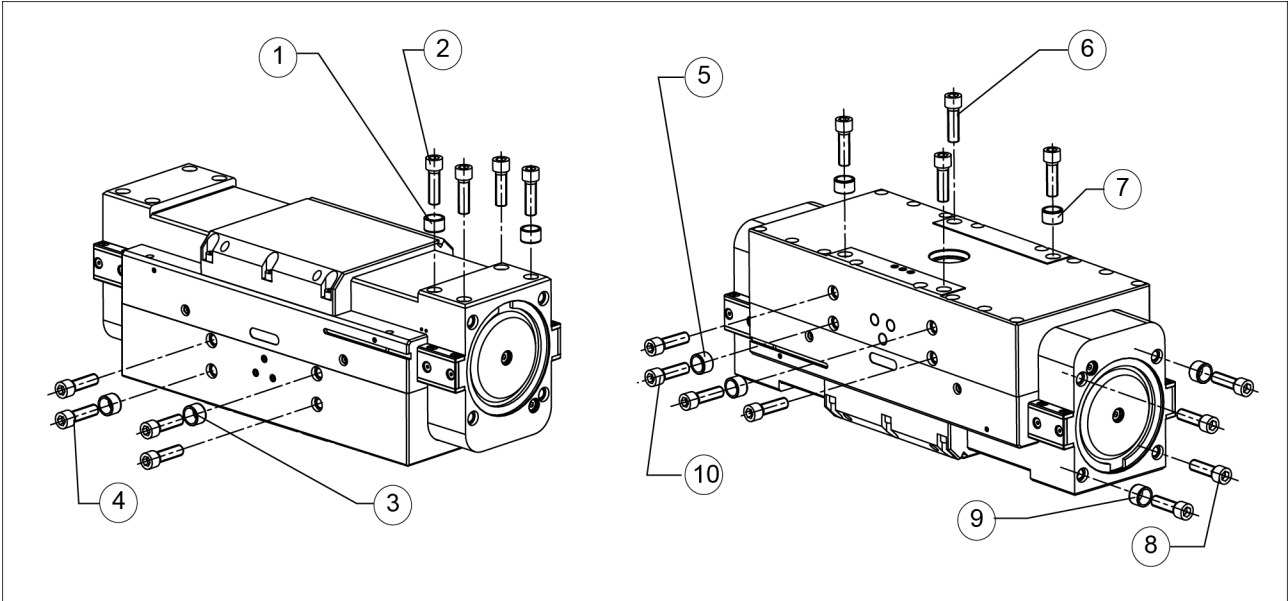
### 3 Technical data

Designation	SPG 100
Min. pressure [bar]	2
Max. pressure [bar]	8
Nominal working pressure [bar]	6
Stroke per jaw [mm]	100
Closing force [N]	10000
Repeatability [mm]	0,1
Ambient temperature [°C]	
Min.	- 10
Max.	+ 90
Weight [kg]	35
Protection class IP	30
Pressure medium	Compressed air, compressed air quality according to ISO 8573-1:2010 [7:4:4]

More technical data is included in the catalog data sheet.  
Whichever is the latest version.

## 4 Assembly

### 4.1 Mechanical connection



1	Finger mounting from below	6	Gripper fastening from above
2	Finger fastening from below	7	Gripper mounting from above
3	Gripper mounting from below	8	Lateral finger fastening
4	Gripper fastening from behind	9	Lateral finger mounting
5	Gripper fixation from above	10	Gripper fastening from the front

#### NOTE

The centering sleeves required for fastening or mounting the gripper and fingers are included in the accessory kit.

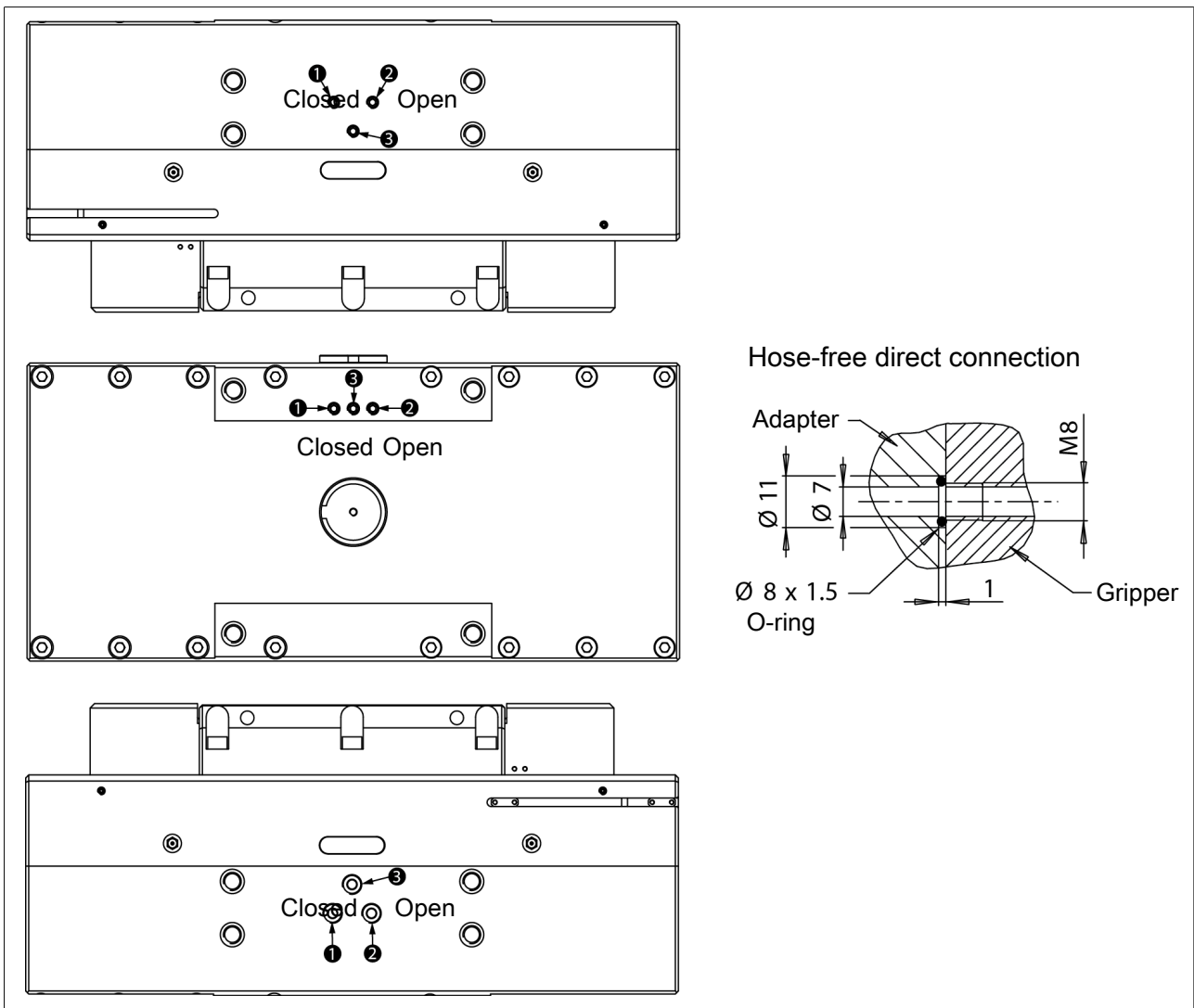
For gripper fastening from above	M12 / 23 deep
For lateral gripper fastening	M12 / 23 deep
For finger fastening from below	M12 / 21 deep
For lateral finger fastening	M12 / 25 deep

Tab.: Thread  $\varnothing$  and max. depth of engagement of the mounting thread

## 4.2 Pneumatic connection

### NOTE

- Observe the requirements for the compressed air supply, ▶ 3 [14].
- In case of compressed air loss (cutting off the energy line), the components lose their dynamic effects and do not remain in a secure position. However, the use of a SDV-P pressure maintenance valve is recommended in this case in order to maintain the dynamic effect for some time. Product variants are also offered with mechanical gripping force via springs, which also ensure a minimum clamping force in the event of a pressure drop.



### 1st view

1+2	2 x M8/10 deep for lateral hose-free direct connection	3	M8/10 deep for side air purge connection
-----	--	---	--

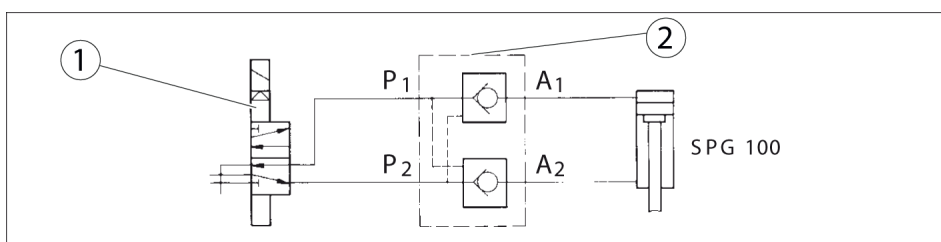
**2nd view**

1+2	2 x M8/10 deep for hose-free direct connection from above	3	M8/10 deep for sealing air connection from above
-----	---	---	--

**3rd view**

1+2	2 x R1/4"/15 deep for hose connection	3	R1/4"/15 deep for sealing air connection
-----	---------------------------------------	---	--

- Open only the air connections that are needed.
- Close unused main air connections using the screw plugs from the enclosed pack.
- For a hose-free direction connection, use the O-rings from the enclosed pack.



*SDV-P 07 from accessory pack*

- |   |                              |
|---|------------------------------|
| 1 | Valve                        |
| 2 | SDV-P 07 from accessory pack |

For version SPG 100-SDV-P:

Connect the gripper according to the wiring diagram above.

### 4.3 Installing the sensors

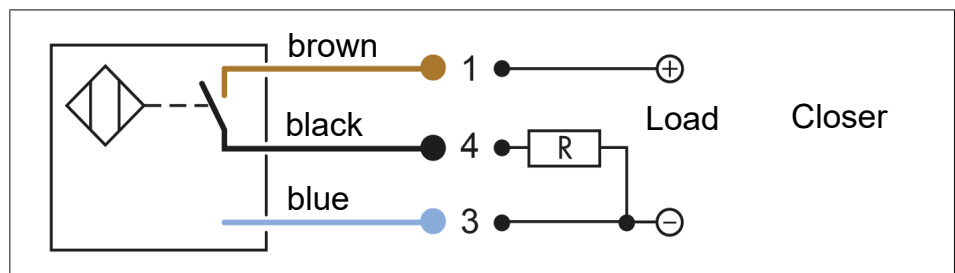
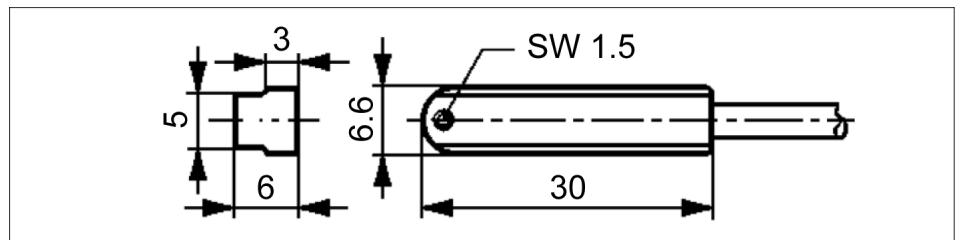
#### NOTE

When mounting and connecting the sensors, observe the Sensor Assembly and Operating Manual.

The product is prepared for the use of sensors.

- For exact type designations of suitable sensors, see the catalog data sheet and Link Übersicht Sensoren.
- For technical data on the appropriate sensors, see the installation and operating instructions and the catalog data sheet.
  - The installation and operating instructions and the catalog data sheet are included with the sensor and are available at [schunk.com](http://schunk.com).
- For information on handling sensors, visit [schunk.com](http://schunk.com) or contact your SCHUNK representative.

#### 4.3.1 Programmable magnetic switch MMS 30



#### NOTICE

**Risk of damage to the sensor during assembly!**

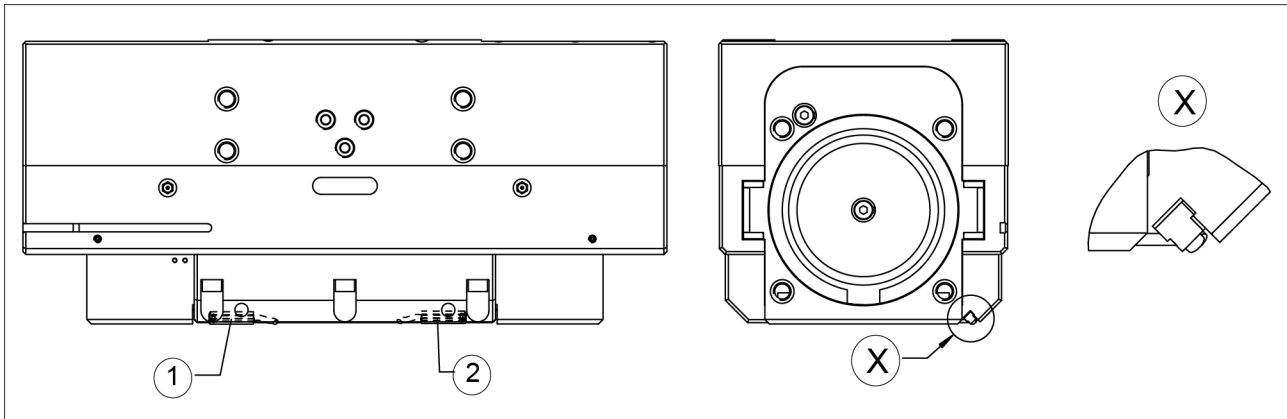
Observe the maximum tightening torque of 30 Ncm.

**NOTE**

**Ferromagnetic components change the switching positions of the sensor. Example: Adapter plate made of mild steel.**

For ferromagnetic adapter plates:

- First mount the product on the adapter plate.
- Then set the switching position of the sensor.



- 1 Magnetic switch 1
- 2 Magnetic switch 2

**Gripper open:**

1. Set the gripper to the "Open" position.
2. Push the magnetic switch 1 backwards through the T-slot towards the middle of the gripper until it switches.
3. Clamp the magnetic switch in this position in the T-slot by tightening the set-screw.
4. Test the function by closing and opening the gripper again.

**Gripper closed:**

1. Set the gripper to the "Closed" position.
2. Push the magnetic switch 2 backwards through the T-slot towards the middle of the gripper until it switches.
3. Clamp the magnetic switch in this position in the T-nut by tightening the set-screw.
4. Test the function by opening and closing the gripper again.

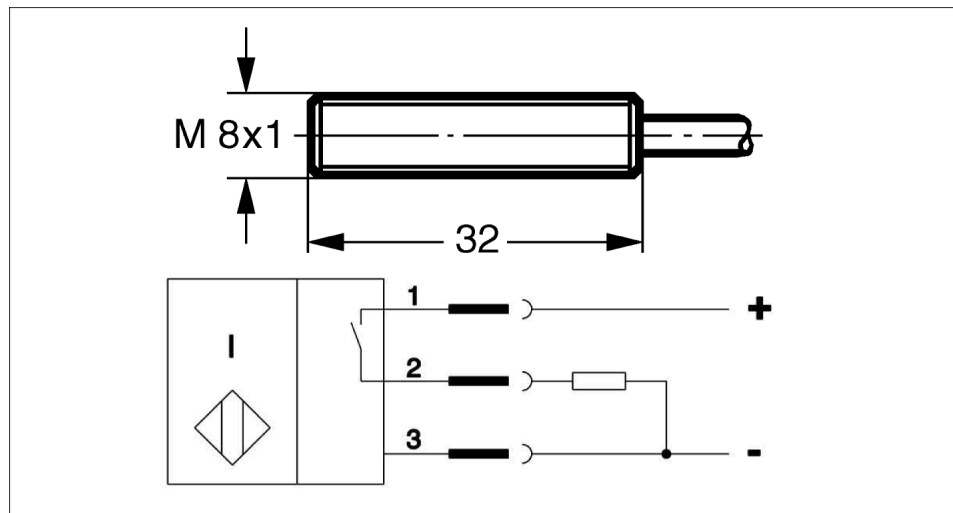
**Part gripped (O.D. gripping):**

1. Clamp the part to be gripped.
2. Proceed as described in "Gripper closed" from point 2 – 4.

**Part gripped (I.D. gripping):**

1. Clamp the part to be gripped.
2. Proceed as described in "Gripper open" from point 2 – 4.

### 4.3.2 Inductive proximity switch IN 80



Connection example for IN 80

1	brown	2	black	3	blue
---	-------	---	-------	---	------

The inductive proximity switch used is reverse polarity protected and short-circuit proof.

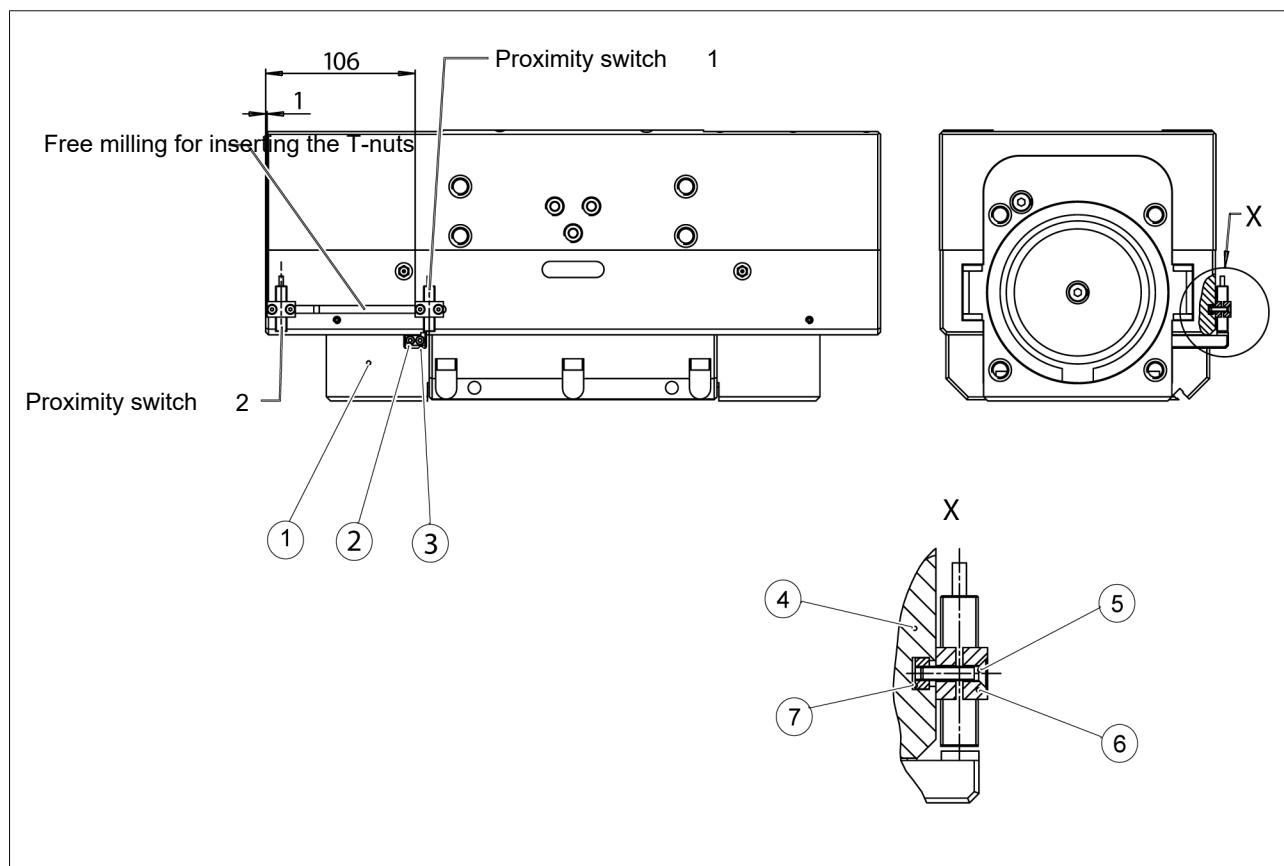
The following must be observed when handling the proximity switch correctly:

- Do not pull on the sensor cable.
- Do not allow the sensor to dangle by the cable.
- Do not overtighten the fastening screw or clamps.
- Observe the permissible bending radius of the cable (see catalog specifications).
- Avoid contact of the proximity switches with hard objects and chemicals, especially nitric, chromic and sulphuric acid.

The inductive proximity switch is an electronic component that can react sensitively to high-frequency interference or electromagnetic fields.

- Check the attachment and installation of the cable. The distance to high-frequency interference sources and their supply line must be sufficient.
- The parallel connection of several sensor outputs of the same type (npn, pnp) is permitted, but does not increase the permissible load current.
- It should be noted that the leakage current of the individual sensors (approx. 2 mA) is added together.

## Mounting of the mounting kit



Designation	Quantity
Control cam	1
Slot nut	2
Clamping bracket	2
Screw	2
Countersunk screw	4

Tab.: Mounting kit SPG 100: ID number 0300765

1. Fasten the control cam (3) to the base jaw (1) using the screws (2).
2. Slide the two sliding blocks (7) into the T-slot of the guide strip (4).
3. Fasten the two brackets (6) to the two T-nuts (7) using the countersunk screws (5) so that the brackets (6) can still be moved in the T-nut.
4. Move the brackets (6) to the specified position (following illustration).

**Gripper open:**

1. Set the gripper to the "Open" position.
2. Slide the proximity switch 1 into the bracket (6) so that the switching distance between the end face of the proximity switch and the switching cam (3) is 0.8 mm.
3. Fasten the bracket (6) and the inserted proximity switch 1 by tightening the two countersunk screws (5).
4. Test the function by closing and opening the gripper again.

**Gripper closed:**

1. Set the gripper to the "Closed" position.
2. Slide the proximity switch 2 into the bracket (6) so that the switching distance between the end face of the proximity switch and the switching cam (3) is 0.8 mm.
3. Fasten the bracket (6) and the inserted proximity switch 2 by tightening the two countersunk screws (5).
4. Test the function by opening and closing the gripper again.

**Part gripped (O.D. gripping):**

1. Clamp the part to be gripped.
2. Loosen the countersunk screws (5) and push the bracket (6) with the proximity switch 2 away from the center of the gripper until the proximity switch switches.
3. Proceed as described in "Gripper closed" from point 2 – 4.

**Part gripped (I.D. gripping):**

1. Clamp the part to be gripped.
2. Loosen the countersunk screws (5) and slide the bracket (6) with the proximity switch 1 away from the center of the gripper until the proximity switch switches.
3. Proceed as described in "Gripper open" from point 2 – 4.

## 5 Troubleshooting

### 5.1 Product is not moving

Possible cause	Corrective action
Base jaws jam in housing, e.g. mounting surface is not sufficiently even.	Check the evenness of the mounting surface. ▶ 4.1 [15]
	Loosen the mounting screws of the product and actuate the product again.
Pressure drops below minimum.	Check air supply. ▶ 4.2 [16]
Compressed air lines switched.	Check compressed air lines. ▶ 4.2 [16]
Proximity switch defective or set incorrect.	Readjust or change sensor.
Unused air connections open.	Close unused air connections.
Flow control valve closed.	Open the flow control valve.
Component part defective.	Replace component or send it to SCHUNK for repair.

### 5.2 Product does not execute a complete stroke

Possible cause	Corrective action
Dirt deposits between cover and piston.	Clean and if necessary re-lubricate.
Dirt deposits between basic jaws and guidance.	Disassemble and clean the product.
Pressure drops below minimum.	Check air supply. ▶ 4.2 [16]
Mounting surface is not sufficiently flat.	Check the evenness of the mounting surface. ▶ 4.1 [15]
Component part defective.	Replace component or send it to SCHUNK for repair.

### 5.3 Product opens or closes abruptly

Possible cause	Corrective action
Too little grease in the mechanical guiding areas.	Clean and lubricate product. ▶ 6 [25]
Compressed air lines blocked.	Check compressed air lines of damage.
Mounting surface is not sufficiently flat.	Check the evenness of the mounting surface.
One-way flow control valve is missing or adjusted incorrectly.	Install and adjust one-way flow control valve.
Loading too large.	Check permissible weight and length of the gripper fingers.

## 5.4 Gripping force gets weaker

Possible cause	Corrective action
Compressed air can escape.	Check seals, if necessary, disassemble the product and replace seals.
Too much grease in the mechanical movement space.	Clean and lubricate product.
Pressure drops below minimum.	Check air supply. ▶ 3 [ 14]
Component part defective.	Replace component or send it to SCHUNK for repair.

## 5.5 Product does not achieve the opening and closing times

Possible cause	Corrective action
Compressed air lines are not installed optimally.	If present: Open the flow control couplings on the product to the maximum that the movement of the jaws occurs without bouncing and hitting.
	Check compressed air lines.
	Inner diameters of compressed air lines are of sufficient size in relation to compressed air consumption.
	Keep compressed air lines between the product and directional control valve as short as possible.
	Flow rate of valve is sufficiently large relative to the compressed air consumption.
	<b>NOTICE! The throttle check valve must not be removed, even if the product has not reached the opening and closing times.</b>
	If you still cannot achieve the open and close times in the latest catalog, we recommend the use of quick-air-vent-valves directly at the product.
Loading too large.	Check permissible weight and length of the gripper fingers.

## 6 Maintenance

### 6.1 Notes

#### Replacement of the housing and base jaws

The base jaws and the guides in the housing are matched to each other. To replace these parts, send the product to SCHUNK with a repair order.

### 6.2 Maintenance and care intervals

#### NOTICE

#### Material damage due to hardened lubricants!

Lubricants harden more quickly at temperatures above 60 °C, leading to possible product damage.

- Reduce maintenance interval accordingly.

---

Interval [Mio. cycles]	0,5
------------------------	-----

---

### 6.3 Lubricants/greasing areas (basic lubrication)

During maintenance, treat all greasing areas with lubricant. Apply a thin film of lubricant using a lint-free cloth. SCHUNK recommends the listed lubricants.

Lubricant point	Lubricant
Metallic sliding surfaces	SCHUNK grease 3
Seals and sealing surfaces	SCHUNK grease 1
Cylinder surfaces	SCHUNK grease 1

Details regarding SCHUNK lubricant designations are available at [schunk.com/lubricants](https://www.schunk.com/lubricants).

The product contains food-compliant lubricants as standard. **The requirements of standard EN 1672-2:2020 are not fully met.** Depending on the load, the guides in the housing can be re-lubricated.

#### NOTE

- Change contaminated food-compliant lubricant.
  - Observe information in the safety data sheet from the lubricant manufacturer.
-

## 6.4 Disassembling the gripper

Position of the item numbers ▶ 6.6 [ 28]



### **⚠ WARNING**

#### **Risk of injury due to sudden movements!**

If the energy supply is switched on or if residual energy is still present in the system, this can cause components to move unexpectedly, which may result in serious injuries.

- Before starting any work on the product: Switch off the energy supply and secure against re-connection.
- Ensure that no residual energy remains in the system.

1. Remove the pressure lines.
2. Remove the locking ring (51) and pull the pinion bearing (11) out of the housing using a screw or a puller.
3. Pull the pinion (8) out of the housing.
4. Pull the dowel pins (40) out of the cover plate (10) using a screw or puller.
5. Unscrew the screws (34) and remove the cover (10).
6. Remove the two retaining rings (50) and pull the cover (9) out of the base jaws (P2). If the cover jams, remove the locking ring (52) and the locking screw (47). The cover (9) can then be pulled out with the aid of a screw or puller.
7. Move the base jaws (2) to the "Gripper closed" position and unscrew the piston (6) from the base jaws (2) using a face wrench.
8. Pull out the base jaws (2) from the guide strips (3).
9. Pull the dowel pins (40) out of the piston rod (5) using a screw or puller, remove the screws (32) and remove the piston rod (5).
10. Clean all parts thoroughly and check for defects and wear.
11. Replace all seals according to sealing kit list.

Assembly is performed in the reverse order.

## 6.5 Servicing and assembling the product

### Maintenance

- Clean all parts thoroughly and check for damage and wear.
- Treat all greased areas with lubricant.
  - ▶ 6.3 [📄 25]
- Oil or grease bare external steel parts.
- Replace all wear parts / seals.
  - Position of the wearing parts ▶ 6.6 [📄 28]
  - Seal kit ▶ 1.4.2 [📄 7]

### Assembly

Assembly takes place in the opposite order to disassembly.  
Observe the following:

- Unless otherwise specified, secure all screws and nuts with Loctite no. 243 and tighten with the appropriate tightening torque. ▶ 6.5.1 [📄 27]

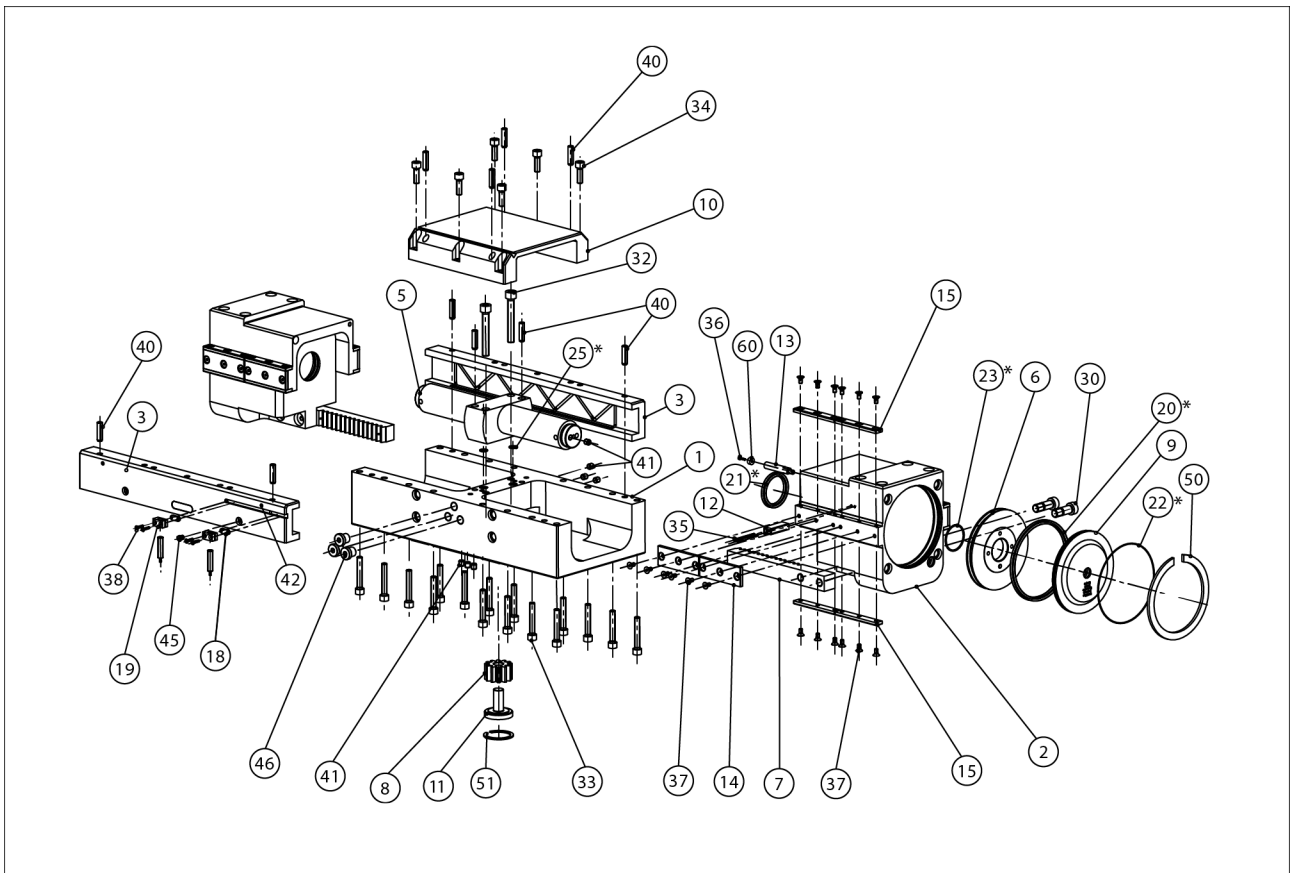
### 6.5.1 Tightening torque for screws

Position of the item numbers ▶ 6.6 [📄 28]

Item	SPG 100
30	45 Nm
32	20 Nm
33	25.5 Nm
34	25.5 Nm

*Tab.: Tightening torque for screws*

## 6.6 Assembly drawing



\* Wearing part, replace during maintenance.  
Included in the seal kit. Seal kit can only be ordered completely.

## 7 Translation of the original declaration of incorporation

in terms of the Directive 2006/42/EG, Annex II, Part 1 Section B.

Manufacturer/  
Distributor                      SCHUNK SE & Co. KG  
Spanntechnik | Greiftechnik | Automatisierungstechnik  
Bahnhofstr. 106 – 134  
D-74348 Lauffen/Neckar

We hereby declare that the partly completed machine described below

Product designation:        2-finger parallel grippers / SPG 100/pneumatic  
ID number                      0302121, 0302120

meets the following basic occupational health and safety of the Machinery Directive 2006/42/EC:

No. 1.1.1, No. 1.1.2, No. 1.1.3, No. 1.1.5, No. 1.3.2, No. 1.5.3, No. 1.5.4, No. 1.5.6, No. 1.5.8, No. 1.5.10, No. 1.5.11, No. 1.5.13

The partly completed machinery may not be put into operation until it has been confirmed that the machine into which the partly completed machinery is to be installed complies with the provisions of the Machinery Directive (2006/42/EC). The declaration shall be rendered invalid if modifications are made to the product.

Applied harmonized standards, especially:

EN ISO 12100:2010              Safety of machinery – General principles for design –  
Risk assessment and risk reduction

The special technical documentation according to Annex VII, Part B, belonging to the partly completed machine, has been created.

Person authorized to compile the technical documentation:  
Stefanie Walter Address: refer to manufacturer's address

*Signature: see original declaration*

Lauffen/Neckar, March 2024

Dr.-Ing. Manuel Baumeister,  
Head of Systems Engineering,  
Technology & Innovation



## 9 Information on the RoHS Directive, REACH Regulation and Substances of Very High Concern (SVHC)

### RoHS Directive

SCHUNK products are classified as "large-scale stationary installations" or as "large-scale stationary industrial tools" within the meaning of Directive 2011/65/EU and its extension 2015/863/EU "on the restriction of the use of certain hazardous substances in electrical and electronic equipment (RoHS)", or fulfill their intended function only as part of one. Therefore products from SCHUNK do not fall within the scope of the directive at this time.

### REACH Regulation

Products from SCHUNK fully comply with the regulations of Regulation (EC) No. 1907/2006 "concerning the Registration, Evaluation, Authorization and Restriction of Chemicals (REACH)" and its amendment 2022/477. SCHUNK attaches great importance to completely avoiding chemicals of concern to humans and the environment wherever possible.

Only in rare exceptional cases do SCHUNK products contain SVHC substances on the candidate list with a mass content above 0.1%. In accordance with Article. 33 (1) of Regulation (EC) No. 1907/2006, SCHUNK complies with its duty to "communicate information on substances in articles" and lists the components concerned and the substances used in an overview that can be viewed at [schunk.com/SVHC](https://schunk.com/SVHC).

*Signature: see original declaration*

Lauffen/Neckar, March 2024

Dr.-Ing. Manuel Baumeister,  
Head of Systems Engineering,  
Technology & Innovation



**SCHUNK SE & Co. KG**  
Spanntechnik | Greiftechnik | Automatisierungstechnik

Bahnhofstr. 106 - 134  
D-74348 Lauffen/Neckar  
Tel. +49-7133-103-0  
info@de.schunk.com  
schunk.com

Folgen Sie uns | *Follow us*



Wir drucken nachhaltig | *We print sustainable*