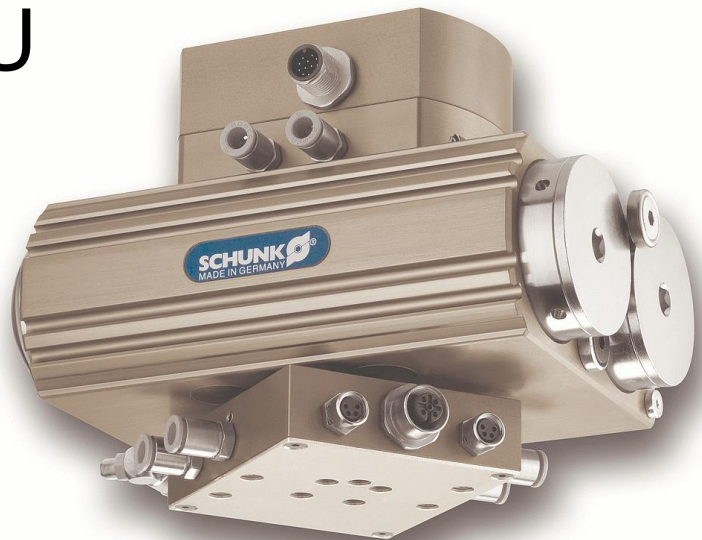


EDF FOR SRU

ELECTRICAL FEED-THROUGH



Dear Customer,

Congratulations on choosing a SCHUNK product. By choosing SCHUNK, you have opted for the highest precision, top quality and best service.

You are going to increase the process reliability of your production and achieve best machining results – to the customer's complete satisfaction.

SCHUNK products are inspiring.

Our detailed assembly and operation manual will support you.

Do you have further questions? You may contact us at any time – even after purchase. You can reach us directly at the mentioned addresses in the last chapter of these instructions.

Kindest Regards,

Your SCHUNK GmbH & Co. KG
Precision Workholding Systems
Bahnhofstr. 106 - 134
D-74348 Lauffen/ Neckar

Tel. +49-7133-103-2503
Fax +49-7133-103-2189
automation@de.schunk.com
www.schunk.com

Document last updated: 04.03.2008
Edition: 01-A



Reg. No. 3496-01



Reg.-No. DE-3496-01



Contents

1. SAFETY	3
1.1. SYMBOL KEY.....	3
1.2. APPROPRIATE USE.....	3
1.3. SAFETY NOTES.....	3
2. WARRANTY	4
3. SCOPE OF DELIVERY	5
4. TECHNICAL DATA	5
4.1. CONNECTION OPTIONS:.....	5
4.2. DATA.....	5
5. ASSEMBLY AND INSTALLATION	6
5.1. INSTALLATION OF THE ELECTRICAL CABLE FEED-THROUGH IN THE SRU ROTARY ACTUATOR.....	6
5.2. CABLE ASSIGNMENTS.....	7
5.3. PIN ASSIGNMENT EDF FOR SRU20-35:.....	8
5.4. PIN ASSIGNMENT EDF FOR SRU40-60:.....	8
5.5. ASSEMBLY OF SRU WITH EDF.....	9
6. MAINTENANCE AND SERVICING	11
7. ASSEMBLY DRAWINGS	11
8. BILL OF MATERIALS	13
9. CONTACT	18

1. Safety

1.1. Symbol key



You will find this symbol wherever **hazards for persons or damage to the product** are possible.



This symbol indicates **important information** on the product or its handling.

1.2. Appropriate use

The unit must only be used within the scope of its technical data. Appropriate use also includes compliance with the conditions the manufacturer has specified for commissioning, assembly, operation, the environment and maintenance. Using the unit with disregard to even a minor specification will be deemed inappropriate use. The manufacturer assumes no liability for any injury or damage resulting from inappropriate use.

1.3. Safety notes

There are potential risks associated with the unit, for example if:
the unit is improperly used, installed or serviced.
the unit is used other than for the intended purpose.
the EC Machine Directive, the accident prevention regulations, the VDE guidelines or the safety and installation instructions are not observed.

All personnel who are responsible for installation, commissioning and servicing must have read and understood the entire operating manual, in particular the chapter on »Safety«. It is recommended to have this confirmed in writing.

Installation and dismantling, mounting of the proximity switches, connections and commissioning may be carried out only by authorized personnel.

Work procedures that impair the correct functioning and operational safety of the product are prohibited.



Do not move any parts by hand when the unit is connected to the power supply.



Do not reach into the open mechanical parts and the area of motion of the rotary unit.




The power supply cables must be removed for assembly, modification, maintenance and adjustment of the unit.




Carry out all maintenance, modifications or attachments outside of the danger zone.





During installation, connection, adjusting, commissioning and testing, measures must be taken to prevent the risk of inadvertent activation of the unit by the fitter or other persons.

 Protective covers must be provided for the use of all handling modules in accordance with EC Machine Directive, Section 1.4.

 There is a danger due to falling or ejected objects. Preventive measures must be taken to prevent the falling or ejection of potentially dangerous objects (machined workpieces, tools, chips, debris, waste, etc.).

Additional bore holes, threads or attachments not offered by SCHUNK as accessories may be mounted only after obtaining the approval of SCHUNK.

 Rotary units with internal springs can have parts that are under spring tension. Therefore, special care is necessary when dismantling such a unit.

 In the event of emergency shut-down the rotary unit can still move due to a drop in pressure. If such movement is not desired, the position of the unit in the event of emergency shut-down can be secured in any end position with the use of SCHUNK SDV-P valves.

In addition, the applicable **safety regulations and** accident prevention regulations must be observed.

2. Warranty

The warranty period is 24 months after delivery date from the factory, provided that the specified maintenance and lubrication intervals were observed. Components coming into contact with workpieces and wearing parts are never included in the warranty. In this context, please also see our General Terms and Conditions.

3. Scope of delivery

The EDF is normally supplied together with an SRU unit and then bears the product name "SRU ...-EDF...". In this case, parts of the scope of delivery described below are installed in the overall unit.

The scope of delivery of the EDF consists of:

- Distributor plate with spiral cable, integrated circuit board and housing sockets
- Connecting flange
- 2 securing screws
EDF 20: M 2 x 12 – EDF 40: M 3 x 14
EDF 45: M 3 x 14 – EDF 57: M 3 x 14

and the following small components:

- O-rings for air feed-through
- 4 x for EDF 20 / 25 / 35 – 8 x for EDF 40 / 50 / 60
- O-rings for direct air connections
- 6 for SRU without center position – 7 x for SRU with center position
- Locking screw M5 / G1/8"
- 4 x for EDF 20 / 25 / 35 – 8 x for EDF 40 / 50 / 60
- 2 guide sleeves for screwing on SRU with EDF
- 2 guide sleeves for screwing on adapter plate
- Jumpers for switching sensors to BUS feed-through
- Cable plug M16 (for self-assembly)

4. Technical data

4.1. Connection options:

Output side:

- 4x/8x sensor M5 / M8 / M12 (3-pin) or alternatively:
- 1x BUS M12 (5-pin)

Screw connection side:

- Supply cable: M16 (12-pin)

4.2. Data

U_{\max} : 60 V

I_{\max} (per wire): 2 A

Transfer rate for Profibus: max. 1.5 Mbaud

5. Assembly and installation

5.1. Installation of the electrical cable feed-through in the SRU rotary actuator

You require these instructions only if you would like to retrofit an EDF on an existing SRU unit. SRU units can already be ordered equipped with EDF ex-works.

1. Feed the cable through the hole in the flat seal and position it in the recess in the distributor plate.
2. Screw the thread reducer (item 7) into the pinion in the thread below the flat recess and secure with Weicon 302-22. (Not for EDF for SRU20/25)
3. In order to position the distributor plate, place the two corresponding guide sleeves in the flat recesses.
4. Pull the cable through the center bore of the SRU rotary actuator until the distributor plate is just in front of the pinion.
5. Place the O-rings in the recesses of the air feed-throughs in the pinion.
6. Pull the cable through fully and position the distributor plate correctly on the pinion.



IMPORTANT

Damage to the cable connection of the adapter plate is possible!

– Do not pull on the cable too strongly!

7. Now fasten the distributor plate on the pinion with the two screws (item 28).
8. Check the tightness of the air feed-throughs.
9. Turn the rotary actuator and place it on the distributor plate.
10. Swivel the SRU counter-clockwise up to the stop.
11. Knock the clamping pins into the bores on the pinion.
12. Pull the cable end through the bore in the flange.
13. Solder the cable onto the flange connector (item 22) in accordance with specifications (see chapter 5.2).
14. Align the cable spiral and shape into original form. Spiral diameter approx. 27 mm.
15. Using a paint brush, grease the flange (inside) and the cable spiral with milk fat.
16. Place the cable in the clamping groove in the flange.
17. Fit the O-ring (item 47) at the connector flange.
18. Screw the connector onto the cover plate.
19. Screw the cover plate onto the flange with the oval head screws.
20. Fasten the flange on the SRU with two screws and secure with Weicon 302-22
21. Place the O-ring (item 43) in the MDF media feed-through flange.
22. Fasten the cover plate (item 6) on the flange with 2 countersunk screws.

Disassembly is carried out in reverse order.

5.2. Cable assignments

Cable outlet of the rotating distributor plate

Unit	Cable connection, rotating adapter plate	
SRU 20	4 x M5	Connector for proximity switch connection
	1 x M12	Connector for BUS connection
SRU 20	4 x M8	Connector for proximity switch connection
	1 x M12	Connector for BUS connection
SRU 25	4 x M5	Connector for proximity switch connection
	1 x M12	Connector for BUS connection
SRU 25	4 x M8	Connector for proximity switch connection
	1 x M12	Connector for BUS connection
SRU 35	4 x M5	Connector for proximity switch connection
	1 x M12	Connector for BUS connection
SRU 35	4 x M8	Connector for proximity switch connection
	1 x M12	Connector for BUS connection
SRU 40	8 x M5	Connector for proximity switch connection
	1 x M12	Connector for BUS connection
SRU 40	8 x M8	Connector for proximity switch connection
	1 x M12	Connector for BUS connection
SRU 40	8 x M12	Connector for proximity switch connection
	1 x M12	Connector for BUS connection
SRU 50	8 x M5	Connector for proximity switch connection
	1 x M12	Connector for BUS connection
SRU 50	8 x M8	Connector for proximity switch connection
	1 x M12	Connector for BUS connection
SRU 50	8 x M12	Connector for proximity switch connection
	1 x M12	Connector for BUS connection
SRU 60	8 x M5	Connector for proximity switch connection
	1 x M12	Connector for BUS connection
SRU 60	8 x M8	Connector for proximity switch connection
	1 x M12	Connector for BUS connection
SRU 60	8 x M12	Connector for proximity switch connection
	1 x M12	Connector for BUS connection

Bending radius:

Minimum bending radius for permanent movement:

10x cable diameter

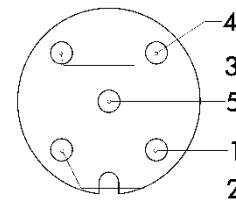
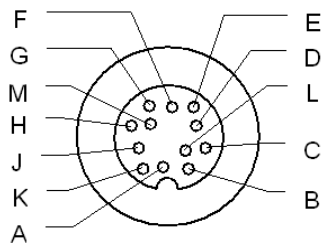


Figure 1 - Pin assignment - Connector M16 **Figure 2 - Pin assignment - Connector M12**

5.3. Pin assignment EDF for SRU20-35:

Pin: connector M16	Sensor operation	Bus operation		
	Pin to sensor connections	Profibus	CAN	RS232
A	Signal Sensor 3	Signal A	CAN_L	RxD
B	GND (common)	GND	GND	GND
C	Signal Sensor 2	Signal B	CAN_H	TxD
D	Signal Sensor 4	+24 V	+24 V	+24 V
E	Signal Sensor 1	GND	GND	GND
F	-- not used --	-- not used --	-- not used --	-- not used --
G	-- not used --	-- not used --	-- not used --	-- not used --
H	+24 V (common)	+24 V	+24 V	+24 V
J	-- not used --	-- not used --	-- not used --	-- not used --
K	-- not used --	-- not used --	-- not used --	-- not used --
L	-- not used --	-- not used --	-- not used --	-- not used --
M	-- not used --	-- not used --	-- not used --	-- not used --
Shield	SHD	SHD	SHD	SHD

5.4. Pin assignment EDF for SRU40-60:

Pin: connector M16	Sensor operation	Bus operation		
	Pin to sensor connections	Profibus	CAN	RS232
A	Signal Sensor 3	GND	GND	GND
B	GND (common)	GND	GND	GND
C	Signal Sensor 2	GND	GND	GND
D	Signal Sensor 4	+24 V	+24 V	+24 V
E	Signal Sensor 1	GND	GND	GND
F	Signal Sensor 5	+24 V	+24 V	+24 V
G	Signal Sensor 6	+24 V	+24 V	+24 V
H	+24 V (common)	+24 V	+24 V	+24 V
J	Signal Sensor 7	Signal A	CAN_L	RxD
K	-- not used --	-- not used --	-- not used --	-- not used --
L	-- not used --	-- not used --	-- not used --	-- not used --
M	Signal Sensor 8	Signal B	CAN_H	TxD
Shield	SHD	SHD	SHD	SHD

Pin: connector M12 output side.	Bus operation		
	Profibus	CAN	RS232
1	+24 V	+24 V	+24 V
2	PB_A	CAN_L	RxD
3	GND	GND	GND
4	PB_B	CAN_H	TxD
5	SHD	SHD	SHD

Refer to the technical documentation for the Schunk sensors for the assignment of the housing sockets on the output side for sensor connection.

5.5. Assembly of SRU with EDF

Assembling the unit on an adapter plate:

Please use the thread on the base of the SRU rotary actuator.
The guide sleeves (enclosed pack) must be used to position the unit.

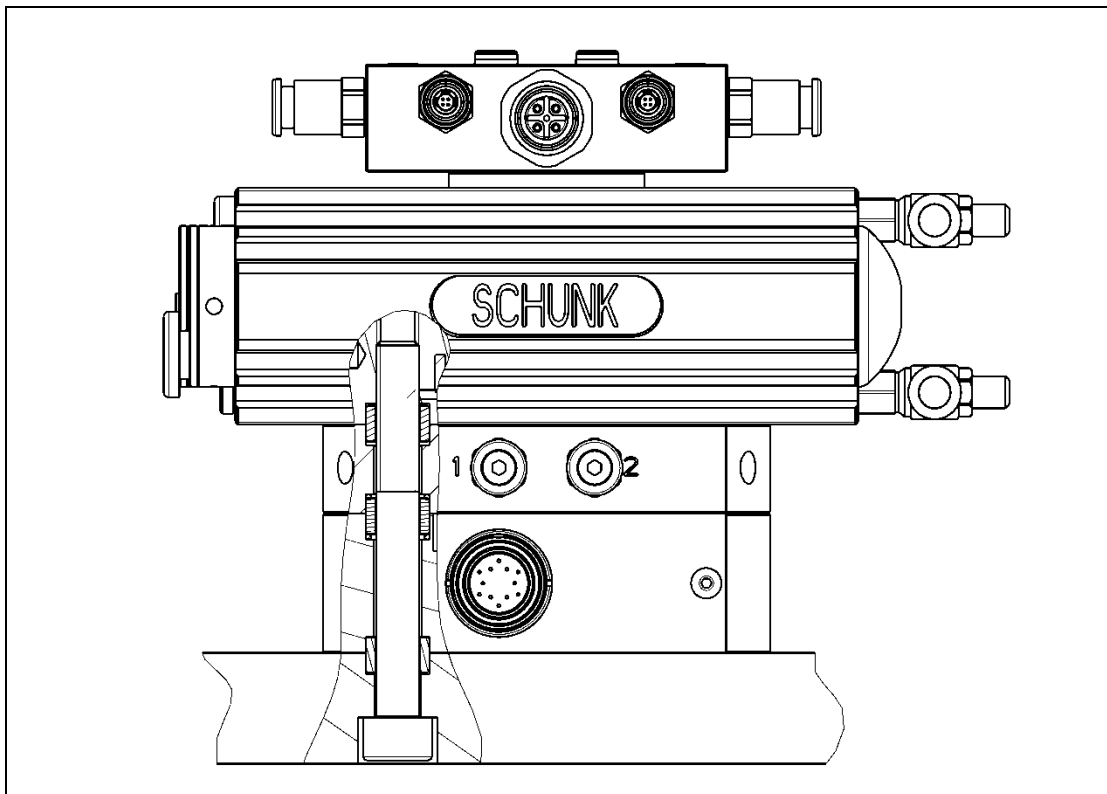


Figure 3 - Screw connection of SRU with EDF on adapter plate

Assembling the adapter plate on the distributor of the EDF

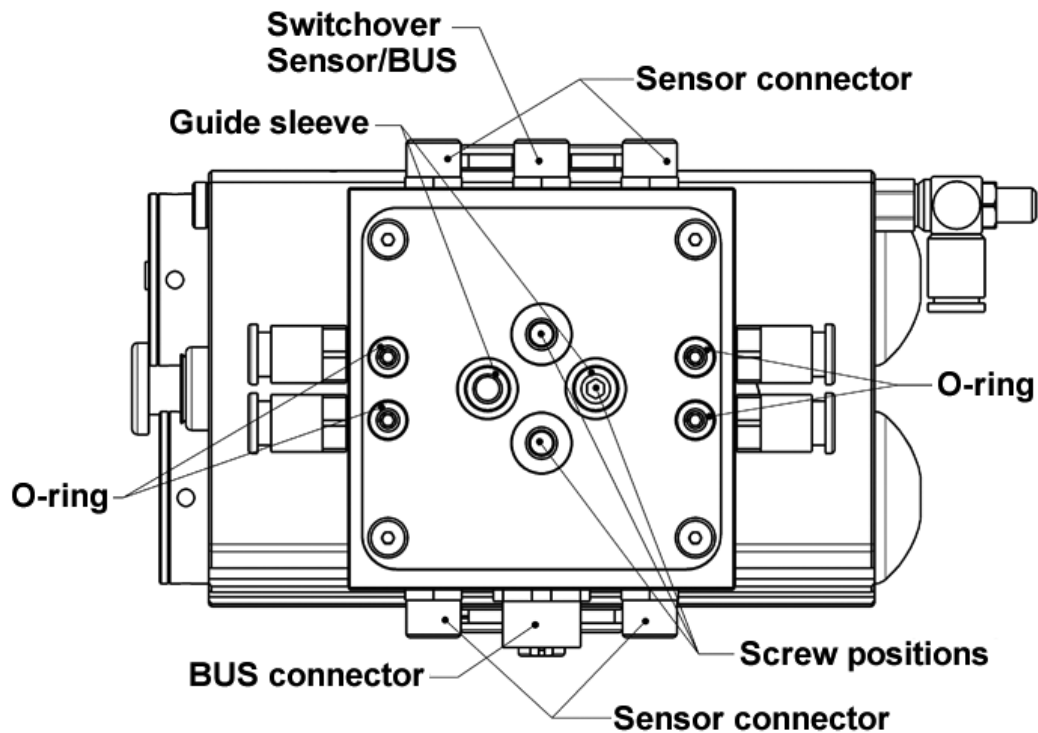


Figure 4 - Connections on rotating distributor

If you want to route BUS signals through the EDF, you must plug in and screw tight the supplied connector (M8). (Standard setting: sensors)

If direct air supply is used, the set screws must be removed and the hose connections at the side air connections replaced by sealing plugs (enclosed pack). Place the O-rings Ø4x1.5 (enclosed pack) in the recesses in the cover plate.

The guide sleeves (enclosed pack) must be used to position the unit.

Remove the 2 screws. Position the adapter plate using the guide sleeves (enclosed pack) and screw tight with 4 screws.

The electronics can now be connected.

6. Maintenance and servicing

Check the cable for damage and abrasion after 1 million swivel movements. Remove the flange by undoing the screws. The flange (inside) and the cable spiral must be lubricated again by rubbing with grease before assembly.

7. Assembly drawings

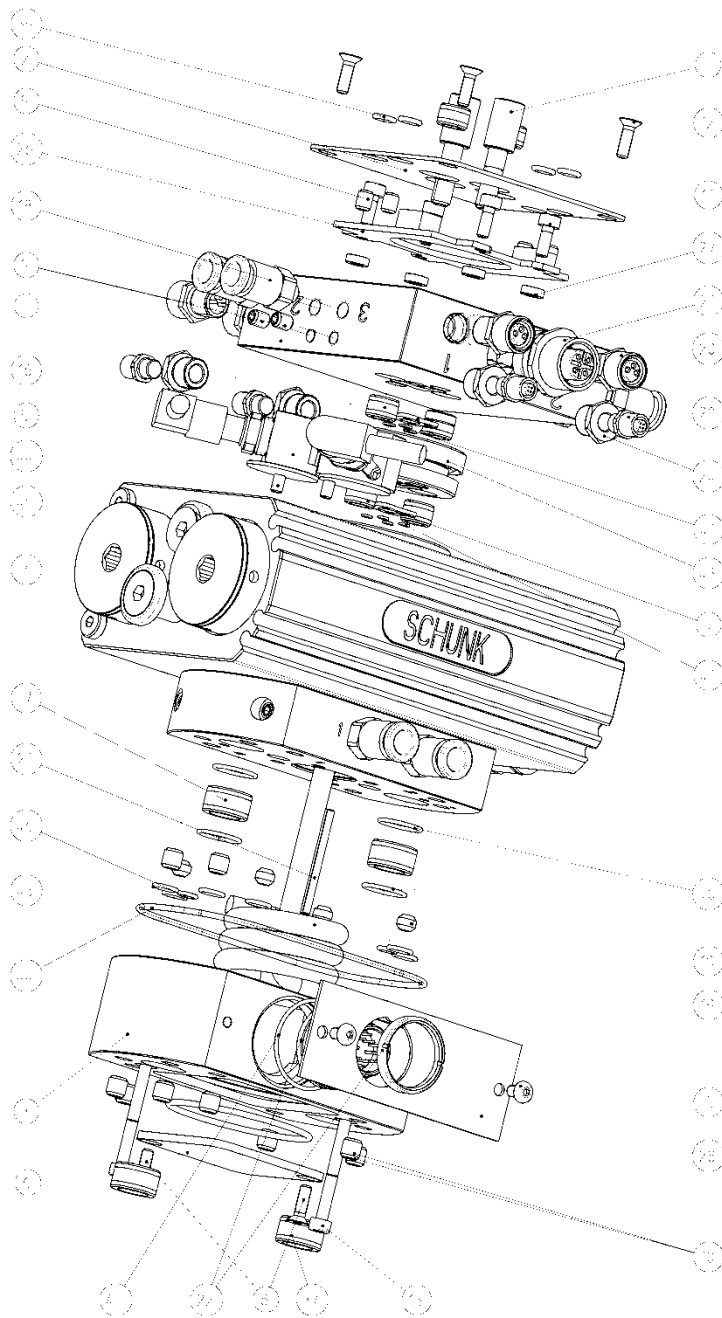


Figure 5 Exploded view of the EDF for SRU 20-35

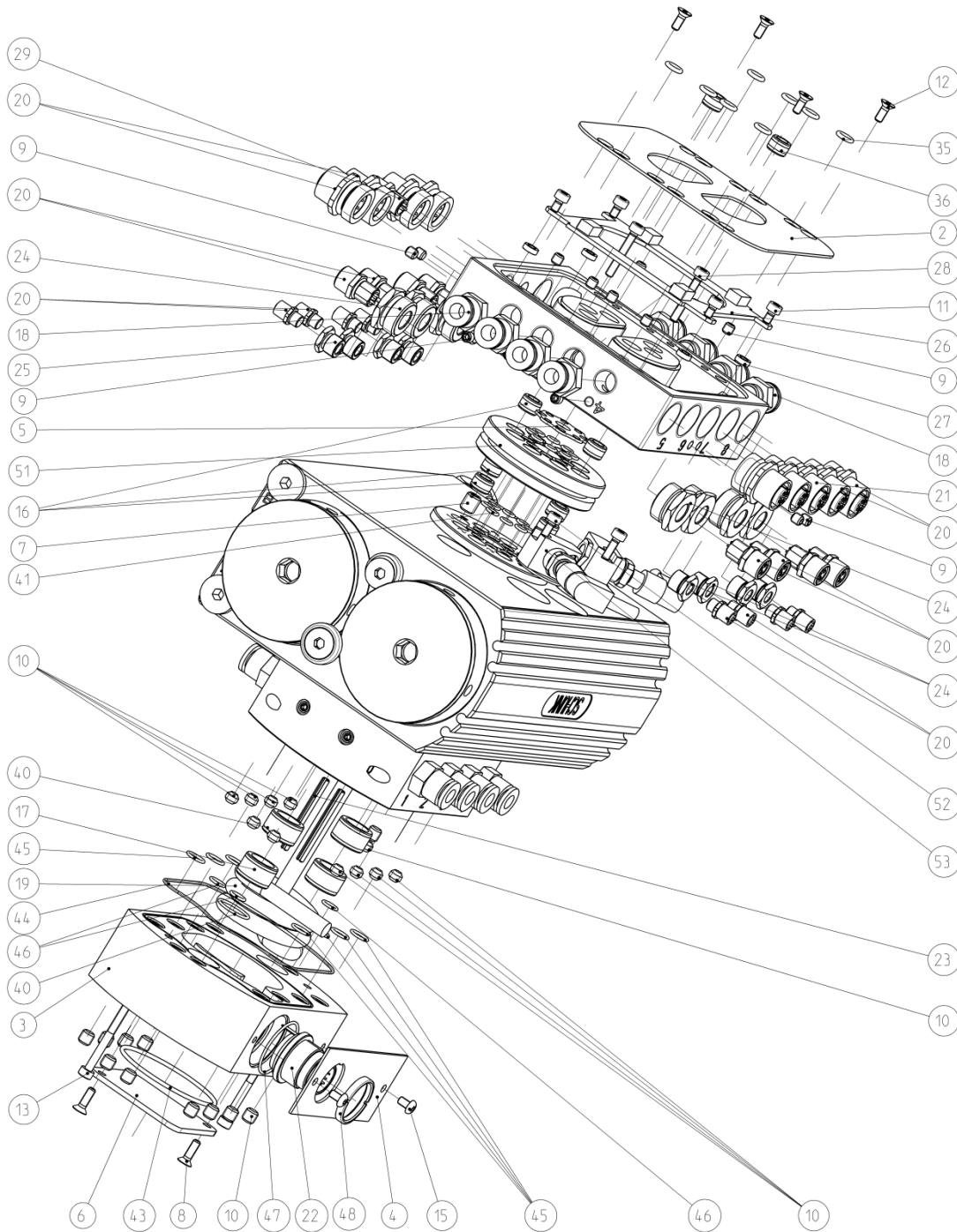


Figure 6 - Exploded view of the EDF for SRU 40-60

8. Bill of materials

EDF for SRU 20/25 – M5/M8 – ID. Nos. 5516940+5516941+5516942+5516250

Item	ID no.	Quantity	Designation	Wearing part?	Note
1	5516187	1	Distributor plate EDF 20/25		
2	5516186	1	Cover plate EDF 20/25		
3	5516235	1	Flange EDF 20/25		
4	5515707	1	Plate EDF 20/25		
5	9942466	1	Flat seal EDF 20/25		
6	5516957	1	Cover plate 2 EDF 20/25		
7	5516697	2	Threaded bolt EDF 20/25		
8	9664501	2	Countersunk screw M3 x 8		
9	99420109	8	Set screw M4 x 4 PA-coated		
10	9942020	7	Set screw M5 x 4 PA-coated		
11	9662006	4	Screw DIN EN ISO 4762 M3 x 8		
12	9938292	4	Countersunk screw M3 x 6		
13	9942459	2	Screw DIN EN ISO 4762 M3 x 25		
14	9660416	2	Screws DIN EN ISO 4762 M5 x 25		
15	9662502	2	Oval head screw M3 x 6		
16	9939378	2	Guide sleeves Ø8 x 5.35		
17	9939380	2	Guide sleeves Ø12 x 6.65		
18	9936167	4	Screw-in connection, straight M5		
19	9941379	1	Spiral round cable for EDF 20-35		
20	9941714	4	Flange socket, 3-pin M5		only for 5516940+5516942
20	9341033	4	Flange socket, 3-pin M8		only for 5516941+5516250
21	9941710	1	Flange socket, 0912 051GF0900		
22	9941715	1	Connector M16		
23	9941755	1	Clamping pin Ø2.5 x 28		
24	9941786	4	Sleeve/reducer M8x0.5–M5x0.5		only for 5516940+5516942
26	9941766	1	EDF connection circuit board 25		
27	9942114	4	Spacer sleeves M3, self-retaining		
29	9942468	1	Flange socket, 4-pin M8		
30	9942494	4	Screw plug M5		only for 5516940+5516942
30	9937198	4	Screw plug M8		only for 5516941+5516250
31	9905303	1	Screw plug M12		
32	9942469	1	Plug-in jumper		Enclosed pack
33	9659005	4	Locking screw M5		Enclosed pack
34	9611227	2	O-ring Ø5x1		Enclosed pack
35	9611112	4	O-ring Ø4x1.5		Enclosed pack
36	9939378	2	Guide sleeve dia. Ø8x5.35		Enclosed pack
37	9939380	2	Guide sleeve dia. Ø12x6.65		Enclosed pack
38	9941732	1	Cable plug M16		Enclosed pack
39	9937198	1	Screw plug M8		
40	9611044	4	O-ring Ø10x1		
41	9611518	4	O-ring Ø2.5x0.5		



Item	ID no.	Quantity	Designation	Wearing part?	Note
43	9611053	1	O-ring Ø35 x 1.5		
44	9940506	1	O-ring Ø68 x 1.5		
45	9611227	7	O-ring Ø5 x 1		
46	9611300	2	O-ring Ø3.5 x 1		
47	9907474	1	O-ring Ø22x1		
48	9941190	1	Nut M18x0.75		

EDF for SRU 35 – M5/M8 – ID. Nos. 5516943+5516251+5516944+5516945

Item	ID no.	Quantity	Designation	Wearing part?	Note
1	5516194	1	Distributor plate EDF 35		
2	5516192	1	Cover plate EDF 35		
3	5516236	1	Flange EDF 35		
4	5516248	1	Plate EDF 35		
5	9942466	1	Flat seal EDF 35		
6	5516957	1	Cover plate 2 EDF 20/25		
7	5516960	1	Reducing sleeve EDF 35		
8	9664501	2	Countersunk screw M3 x 8		
9	9942020	6	Set screw M4 x 4 PA-coated		
10	9942020	11	Set screw M5 x 4 PA-coated		
11	9662006	4	Screw DIN EN ISO 4762 M3 x 8		
12	9938292	4	Countersunk screw M3 x 6		
13	9907495	2	Screw DIN EN ISO 4762 M3 x 30		
14	9660014	2	Screws DIN EN ISO 4762 M5 x 30		
15	9662502	2	Oval head screw M3 x 6		
16	9939378	2	Guide sleeves Ø8 x 5.35		
17	9939380	2	Guide sleeves Ø12 x 6.65		
18	9936167	4	Screw-in connection, straight M5		
19	9941379	1	Spiral round cable for EDF 20-35		
20	9941714	4	Flange socket, 3-pin M5		only for 5516943+5516944
20	9341033	4	Flange socket, 3-pin M8		only for 5516251+5516945
21	9941710	1	Flange socket, 0912 051GF0900		
22	9941715	1	Connector M16		
23	9941755	1	Clamping pin Ø2.5 x 28		
24	9941786	4	Sleeve/reducer M8x0.5–M5x0.5		only for 5516943+5516944
26	9941766	1	EDF connection circuit board 25		
27	9942114	4	Spacer sleeves M3, self-retaining		
28	9660090	2	Screw DIN EN ISO 4762 M3 x 20		
29	9942468	1	Flange socket, 4-pin M8		
30	9942494	4	Screw plug M5		only for 5516943+5516944
30	9937198	4	Screw plug M8		only for 5516251+5516945
31	9905303	1	Screw plug M12		
32	9942469	1	Plug-in jumper		Enclosed pack
33	9659005	4	Locking screw M5		Enclosed pack
34	9611227	3	O-ring Ø5x1		Enclosed pack
35	9611112	4	O-ring Ø4x1.5		Enclosed pack



Item	ID no.	Quantity	Designation	Wearing part?	Note
36	9939378	2	Guide sleeve dia. Ø8x5.35		Enclosed pack
37	9939380	2	Guide sleeve dia. Ø12x6.65		Enclosed pack
38	9941732	1	Cable plug M16		Enclosed pack
39	9937198	1	Screw plug M8		
40	9611044	4	O-ring Ø10x1		
41	9611155	4	O-ring Ø2.5x1		
43	9611053	1	O-ring Ø35 x 1.5		
44	9611160	1	O-ring Ø78 x 1.5		
45	9611227	7	O-ring Ø5 x 1		
46	9611300	2	O-ring Ø3.5 x 1		
47	9907474	1	O-ring Ø22x1		
48	9941190	1	Nut M18x0.75		

EDF for SRU 40 – M5/M8/M12 – ID. Nos.

5516946+5516947+5516252+5516948+5516949+5516950

Item	ID no.	Quantity	Designation	Wearing part?	Note
1	5516204	1	Distributor plate EDF 40		
2	5516198	1	Cover plate EDF 40		
3	5516237	1	Flange EDF 40		
4	5516413	1	Plate EDF 40		
5	9942467	1	Flat seal EDF 40		
6	5516958	1	Cover plate 2 EDF 50/60		
7	5516695	1	Reducing sleeve EDF 40		
8	96640501	2	Countersunk screw M3x8		
9	9942019	20	Set screw M4 x 4 PA-coated		
10	9942020	11	Set screw M5 x 4 PA-coated		
11	9662006	4	Screw DIN EN ISO 4762 M3 x 8		
12	9938292	4	Countersunk screw M3 x 6		
13	9907495	2	Screw DIN EN ISO 4762 M3 x 30		
14	9905206	2	Screws DIN EN ISO 4762 M6 x 35		
15	9662502	2	Oval head screw M3 x 6		
16	9939384	2	Guide sleeves Ø6 x 5.35		
17	9939380	2	Guide sleeves Ø12 x 6.65		
18	9936169	8	Screw-in connection, straight G1/8		
19	9941380	1	Spiral round cable for EDF 40-60		
20	9941714	8	Flange socket, 3-pin M5		only for 5516946+5516948
20	9341033	8	Flange socket, 3-pin M8		only for 5516947+5516949
20	9941202	8	Flange socket, 3-pin M12		only for 5516252+5516950
21	9941710	1	Flange socket, 0912 051GF0900		
22	9941715	1	Connector M16		
23	9941756	1	Clamping pin Ø3 x 32		
24	9941786	8	Sleeve/reducer M8x0.5–M5x0.5		only for 5516946+5516948
24	9941787	8	Sleeve/reducer PG9–M8x0.5		only for 5516946+551694855169 47+5516949
26	9941767	1	EDF connection circuit board 40		

Item	ID no.	Quantity	Designation	Wearing part?	Note
27	9942114	4	Spacer sleeves M3, self-retaining		
28	9660090	2	Screw DIN EN ISO 4762 M3 x 20		
29	9942468	1	Flange socket, 4-pin M8		
30	9942494	8	Screw plug M5		only for 5516946+5516948
30	9937198	8	Screw plug M8		only for 5516947+5516949
30	9905303	8	Screw plug M12		only for 5516252+5516950
31	9905303	1	Screw plug M12		
32	9942469	1	Plug-in jumper		Enclosed pack
33	9659005	4	Locking screw M5		Enclosed pack
34	9611227	3	O-ring Ø5x1		Enclosed pack
35	9611112	8	O-ring Ø4x1.5		Enclosed pack
36	9939378	2	Guide sleeve dia. Ø8x5.35		Enclosed pack
37	9939380	2	Guide sleeve dia. Ø12x6.65		Enclosed pack
38	9941732	1	Cable plug M16		Enclosed pack
39	9937198	1	Screw plug M8		
40	9611076	4	O-ring Ø12x1		
41	9611300	8	O-ring Ø3.5x1		
43	9942127	1	O-ring Ø41 x 1.5		
44	9942470	1	O-ring Ø71.5 x 1.0		
45	9611063	8	O-ring Ø6 x 1		
46	9611227	3	O-ring Ø5 x 1		
47	9907474	1	O-ring Ø22x1		
48	9941190	1	Nut M18x0.75		

EDF for SRU 50/60 – M5/M8/M12 – ID. Nos.

5516951+5516952+5516253+5516953+5516954+5516955

Item	ID no.	Quantity	Designation	Wearing part?	Note
1	5516208	1	Distributor plate EDF 50/60		
2	5516206	1	Cover plate EDF 50/60		
3	5516238	1	Flange EDF 50/60		
4	5516414	1	Plate EDF 50/60		
5	9939230	1	O-ring Ø27x1.5		
6	5516958	1	Cover plate 2 EDF 50/60		
7	5516694	2	Reducing sleeve EDF 50/60		
8	9664501	2	Countersunk screw M3 x 8		
9	9942019	20	Set screw M4 x 4 PA-coated		
10	9942020	8	Set screw M5 x 4 PA-coated		
11	9662006	4	Screw DIN EN ISO 4762 M3 x 8		
12	9938292	4	Countersunk screw M3 x 6		
13	9907495	2	Screw DIN EN ISO 4762 M3 x 30		
14	9660095	2	Screws DIN EN ISO 4762 M10x30		
15	9662502	2	Oval head screw M3 x 6		
16	9939379	2	Guide sleeves Ø10 x 6,65		
17	9939382	2	Guide sleeves Ø16 x 8,6		
18	9936169	8	Screw-in connection, straight G1/8		



Item	ID no.	Quantity	Designation	Wearing part?	Note
19	9941380	1	Spiral round cable for EDF 40-60		
20	9941714	8	Flange socket, 3-pin M5		only for 5516951+5516953
20	9341033	8	Flange socket, 3-pin M8		only for 5516952+5516954
20	9941202	8	Flange socket, 3-pin M12		only for 5516253+5516955
21	9941710	1	Flange socket, 0912 051GF0900		
22	9941715	1	Connector M16		
23	9941756	1	Clamping pin Ø3 x 32		
24	9941786	8	Sleeve/reducer M8x0.5–M5x0.5		only for 5516951+5516953
24	9941787	8	Sleeve/reducer PG9–M8x0,5		only for 5516952+5516954+5516253+5516955
26	9941767	1	EDF connection circuit board 40		
27	9942114	4	Spacer sleeves M3, self-retaining		
28	9660003	2	Screw DIN EN ISO 4762 M3 x 16		
29	9942468	1	Flange socket, 4-pin M8		
30	9942494	8	Screw plug M5		only for 5516941+5516953
30	9937198	8	Screw plug M8		only for 5516952+5516954
30	9905303	8	Screw plug M12		only for 5516253+5516955
31	9905303	1	Screw plug M12		
32	9942469	1	Plug-in jumper		Enclosed pack
33	9659001	8	Locking screw G1/8"		Enclosed pack
34	9611227	3	O-ring Ø5 x 1		Enclosed pack
35	9611112	8	O-ring Ø4 x 1.5		Enclosed pack
36	9939378	2	Guide sleeve Ø8 x 5.35		Enclosed pack
37	9939380	2	Guide sleeve Ø12x 6.65		Enclosed pack
38	9941732	1	Cable plug M16		Enclosed pack
39	9937198	1	Screw plug M8		
40	9611076	4	O-ring Ø12 x 1		
41	9611300	8	O-ring Ø3.5 x 1		
42	9611227	3	O-ring Ø5 x 1		
43	9942127	1	O-ring Ø41 x 1.5		
44	9942470	1	O-ring Ø71.5 x 1.0		
45	9611063	8	O-ring Ø6 x 1		
46	9611300	1	O-ring Ø3.5 x 1		
47	9907474	1	O-ring Ø22x1		
48	9941190	1	Nut M18x0.75		

9. Contact



GERMANY – HEAD OFFICE

SCHUNK GmbH & Co. KG
Spann- und Greiftechnik
Bahnhofstrasse 106 – 134
D-Lauffen/Neckar
Tel. +49-7133-103-0
Fax +49-7133-103-2399
info@de.schunk.com
www.schunk.com



CANADA

SCHUNK Intec Corp.
190 Britannia Road East,
Units 23-24
Mississauga, ON L4Z 1W6
Tel. +1-905-712-2200
Fax +1-905-712-2210
info@ca.schunk.com
www.ca.schunk.com



DENMARK

SCHUNK Intec A/S
Storhaven 7
7100 Vejle
Tel. +45-43601339
Fax +45-43601492
info@dk.schunk.com
www.dk.schunk.com



HUNGARY

SCHUNK Intec Kft.
Széchenyi út. 70.
3530 Miskolc
Tel. +36-46-50900-7
Fax +36-46-50900-6
info@hu.schunk.com
www.hu.schunk.com



AUSTRIA

SCHUNK Intec GmbH
Holzbauernstr. 20
4050 Traun
Tel. +43-7229-65770-0
Fax +43-7229-65770-14
info@at.schunk.com
www.at.schunk.com



CHINA

SCHUNK GmbH & Co.KG
Shanghai
Representative Office
777 Zhao Jia Bang Road
Pine City Hotel, Room 923
Xuhui District
Shanghai 200032
Tel. +86-21-64433177
Fax +86-21-64431922
info@cn.schunk.com
www.cn.schunk.com



FRANCE

SCHUNK Intec SARL
Parc d'Activités des Trois
Noyers 15, Avenue James de
Rothschild
Ferrières-en-Brie
77614 Marne-la-Vallée
Cedex 3
Tel. +33-1-64 66 38 24
Fax +33-1-64 66 38 23
info@fr.schunk.com
www.fr.schunk.com



INDIA

SCHUNK India Branch Office
80 B, Yeswanthpur
Industrial Suburbs,
Bangalore 560 022
Tel. +91-80-41277361
Fax +91-80-41277363
info@in.schunk.com
www.in.schunk.com



BELGIUM, LUXEMBOURG

SCHUNK Intec N.V./S.A.
Bedrijvencentrum Regio Aalst
Industrielaan 4, Zuid III
9320 Aalst-Erembodegem
Tel. +32-53-853504
Fax +32-53-836022
info@be.schunk.com
www.be.schunk.com



CZECH REPUBLIC

SCHUNK Intec s.r.o.
Ernsta Macha 1
643 00 Brno
Tel. +420-545 229 095
Fax +420-545 220 508
info@cz.schunk.com
www.cz.schunk.com



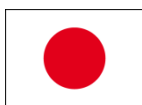
GREAT BRITAIN, IRELAND

SCHUNK Intec Ltd.
Cromwell Business Centre
10 Howard Way,
Interchange Park
Newport Pagnell MK16 9QS
Tel. +44-1908-611127
Fax +44-1908-615525
info@gb.schunk.com
www.gb.schunk.com



ITALY

SCHUNK Intec S.r.l.
Via Barozzo
22075 Lurate Caccivio (CO)
Tel. +39-031-4951311
Fax +39-031-4951301
info@it.schunk.com
www.it.schunk.com



JAPAN

SCHUNK Intec K.K.
45-28 3-Chome Sanno
Ohta-Ku Tokyo 143-0023
Tel. +81-33-7743731
Fax +81-33-7766500
s-takano@tbk-hand.co.jp
www.tbk-hand.co.jp



POLAND

SCHUNK Intec Sp.z o.o.
Stara Iwiczna,
ul. Słoneczna 116 A
05-500 Piaseczno
Tel. +48-22-7262500
Fax +48-22-7262525
info@pl.schunk.com
www.pl.schunk.com



SOUTH KOREA

SCHUNK Intec Korea Ltd.
907 Joongang
Induspia 2 Bldg.,
144-5 Sangdaewon-dong
Jungwon-gu, Seongnam-si
Kyunggi-do, 462-722
Tel. +82-31-7376141
Fax +82-31-7376142
info@kr.schunk.com
www.kr.schunk.com



**SWITZERLAND,
LIECHTENSTEIN**

SCHUNK Intec AG
Soodring 19
8134 Adliswil 2
Tel. +41-44-7102171
Fax +41-44-7102279
info@ch.schunk.com
www.ch.schunk.com



MEXICO, VENEZUELA

SCHUNK Intec S.A. de C.V.
Av. Luis Vega y Monroy # 332
Fracc. Plazas de Sol
Santiago de Querétaro,
Qro. 76099
Tel. +52-442-223-6525
Fax +52-442-223-7665
info@mx.schunk.com
www.mx.schunk.com



PORTUGAL

Sales Representative
Victor Marques
Tel. +34-937-556 020
Fax +34-937-908 692
Mobil +351-963-786 445
info@pt.schunk.com
www.pt.schunk.com



SPAIN

SCHUNK Intec S.L.
Foneria, 27
08304 Mataró (Barcelona)
Tel. +34-937 556 020
Fax +34-937 908 692
info@es.schunk.com
www.es.schunk.com



TURKEY

SCHUNK Intec
Bağlama Sistemleri ve
Otomasyon San. ve Tic. Ltd.
Şti.
Küçükyalı İş Merkezi
Girne Mahallesi
Irmak Sodak, A Blok, No: 9
34852 Maltepe, Istanbul
Tel. +90-216-366-2111
Fax +90-216-366-2277
info@tr.schunk.com
www.tr.schunk.com



NETHERLANDS

SCHUNK Intec B.V.
Speldenmakerstraat 3d
5232 BH 's-Hertogenbosch
Tel. +31-73-6441779
Fax +31-73-6448025
info@nl.schunk.com
www.nl.schunk.com



SLOVAKIA

SCHUNK Intec s.r.o.
Mostná 62
919 01 Nitra
Tel. +421-37-3260610
Fax +421-37-6421906
info@sk.schunk.com
www.sk.schunk.com



SWEDEN

SCHUNK Intec AB
Morabergsvägen 28
152 42 Södertälje
Tel. +46-8 554 421 00
Fax +46-8 554 421 01
info@se.schunk.com
www.se.schunk.com



USA

SCHUNK Intec Inc.
211 Kitty Hawk Drive
Morrisville, NC 27560
Tel. +1-919-572-2705
Fax +1-919-572-2818
info@us.schunk.com
www.us.schunk.com

