

Short Manual Compact-Change-System CWS

About this Short Manual

This Short Manual describes the use of the manual Compact-Change-System CWS with a gripper.

If any data listed within this manual vary from the ones listed in the grippers manual, these data listed here are valid.

Detailed information about assembly, connection, installation, use and maintenance of the gripper can be found on the manual of the gripper.

Safety notes

WARNING

Risk of injury from gripper unit falling!

If the spindle will be lubricated with grease or oil, or the unit is used in lubricated environment, there is a risk of the spindle getting loose due to the reduced friction torque while vibrations. The change adapter CWA with the gripper can be separated from the change head CWK and can fall down!

- Do not lubricate the spindle with oil or grease!

Scope of delivery

The scope of delivery includes

- change head CWK
 - Accessory pack: Centering sleeve (2x)
- change adapter CWA

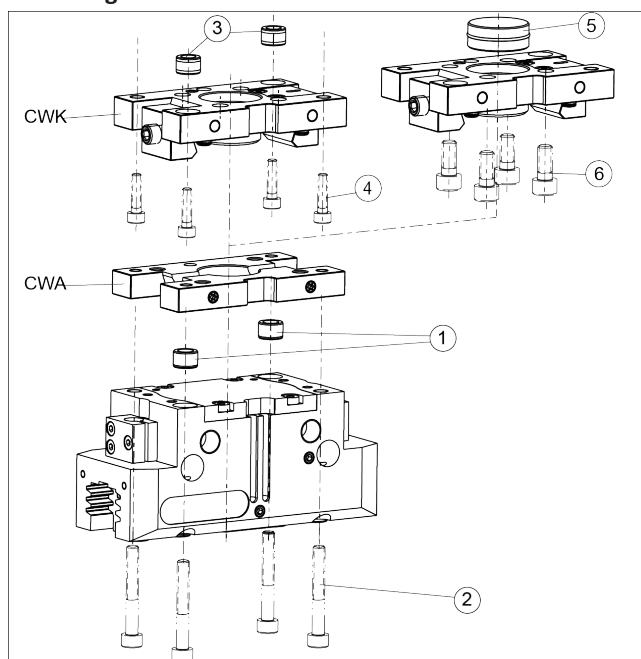
Accessories

- Adapter plate A-CWA
 - Accessory pack: 2x O-ring / 2x Centering sleeve / 2x screws

Assembly

Mechanical connection

Mounting



Mounting of the Compact-Change-System CWS

- Adjust change adapter CWA with the centering sleeves (1) (in the enclosed pack of the gripper) at the gripper and fix it with the screws (2) (not included in scope of delivery).
- Adjust the change head CWK with the centering sleeves (3) (in enclosed pack of CWK) at the robot flange or adapter plate and fix it with the screws (4) (not included).

Alternatively the mounting to the robot flange for sizes 80/10/125 can be done by the integrated ISO-9409 pattern.

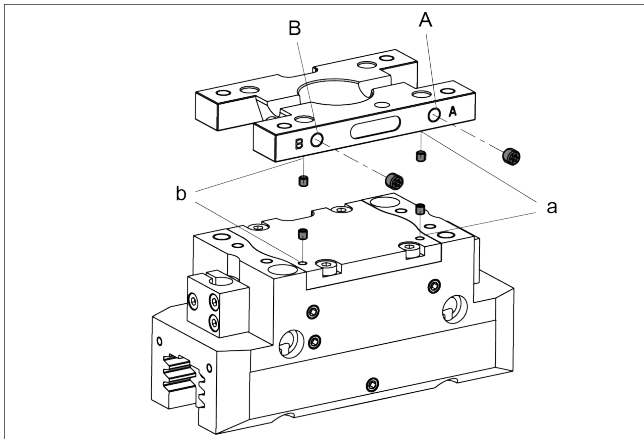
For assembling a boss plate (5) and socket head screws (6) (not included) are needed.

Mounting of optional adapter plate A-CWA

- For mounting the adapter plate A-CWA onto the gripper side of the CWA, remove the setscrews and put the O-rings (in enclosed pack of the A-CWA) into the specified recesses of the CWA.
- Adjust the A-CWA with the centering sleeves at the CWA and fix it with the screws (centering sleeves and screws in the enclosed pack of the A-CWA).

Short Manual Compact-Change-System CWS

Air connection



Air connections at change adapter CWA

- For the hose-free air connection the locking screws at the gripper and at the CWA at the ports **a** and **b** have to be removed.
- Put the O-rings (included in the enclosed pack of the gripper) into the specified recesses of the CWA.

Alternatively the air connections on the side of the CWA can be used.

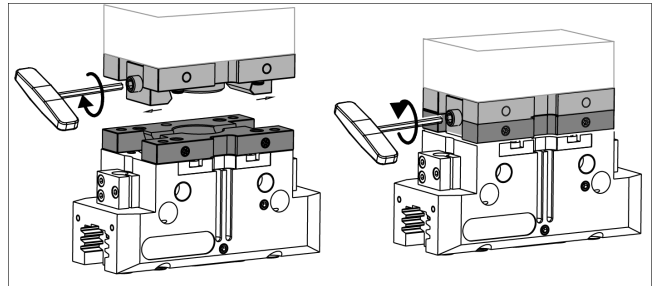
- For this remove the locking screws at the CWA off the ports **A** and **B**.

If further air through-feed is required the ports C and D (at the backside) can be used.

Further information on the hose-free direct connection contains the catalog data sheet.

Operation

Lock



Locking of the Change-System CWS

Designation	CWS				
	50	64	80	100	125
Width across flats (AF)	3	3	4	4	5
Minimum tightening torque [Nm]	5.6	5.6	12	12	16
Maximum tightening torque [Nm]	7	7	15	15	20

- Turn in the spindle at the CWK with an Allen key upto the mechanical stop.
Actuating from the left: Turn clockwise
Actuating from the right: Turn counter clockwise
- Assemble CWK and CWA and turn the spindle at the CWK back again.

Note the maximum tightening torque!

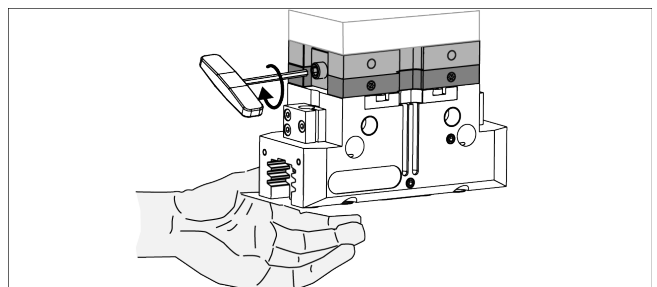
Unlock

WARNING

Risk of injury from gripper unit falling!

Never loose the locking while load is hanging vertically!

- Change adapter CWA with the gripper has o be held tightly while unlocking.



Unlocking of the Change-System CWS

- Turn in the spindle with an Allen key upto the mechanical stop.