

IndraDrive CS drive control unit

Commissioning

Linear drive with IndraDrive CS control unit



Dear Customer,

Congratulations on choosing a SCHUNK product. By choosing SCHUNK, you have opted for the highest precision, top quality and best service.

You are going to increase the process reliability of your production and achieve best machining results – to the customer's complete satisfaction.

SCHUNK products are inspiring.

Our detailed assembly and operation manual will support you.

Do you have further questions? You may contact us at any time – even after purchase. You can reach us directly at the mentioned addresses in the last chapter of these instructions.

Kindest Regards,

Your SCHUNK GmbH & Co. KG
Precision Workholding Systems
Bahnhofstr. 106 – 134
D-74348 Lauffen/Neckar

Tel. +49-7133-103-2503
Fax +49-7133-103-2189
automation@de.schunk.com
www.schunk.com



Table of contents

1	About this manual.....	6
1.1	Purpose/validity	6
1.2	Target groups.....	6
1.3	Applicable documents	6
1.4	Symbols in the manual	7
2	Basic safety notes	8
2.1	Intended use	8
2.2	Environmental and operating conditions	8
2.3	Controlled production	9
2.3.1	Protective equipment.....	9
2.3.2	Constructional changes, attachments, or modifications.....	9
2.4	Personnel qualification	10
2.5	Safety-conscious working.....	10
3	Commissioning.....	11
3.1	Required equipment.....	11
3.2	Commissioning tasks	11
3.2.1	Loading motor parameters	13
3.2.2	Starting field bus.....	16
3.2.3	Selecting operating mode.....	16
3.2.4	Testing measuring system.....	16
3.2.5	Control loop monitoring	18
3.2.6	Connecting IndraDrive CS drive control unit to the power supply	19
3.2.7	Controller enable (CE).....	19
3.2.8	Setting reference switch	20
3.2.9	Mounting drive	20
3.2.10	Configuring software limit position	21
3.2.11	Configuring position and speed controller	21
3.2.12	Commutation setting (only up to firmware 16V10).....	22

4	Appendices	24
4.1	Connection schematic of IndraDrive CS (Drawing No. 357861).....	24
4.2	Designation key of files for linear motors.....	25
4.3	Assignment of the motors to the drives and files.....	26
4.4	Overview of motor types	28
5	Contact	30

1 About this manual

1.1 Purpose/validity

This manual is part of the drive control unit IndraDrive CS and describes the safe and proper use during all phases of operation.

This manual is valid only for the module specified on the front page.

1.2 Target groups

Target group	Task
Manufacturer, operator	<ul style="list-style-type: none"> ➔ Keep this manual available for the personnel at all times. ➔ Require personnel to read and observe this manual and the applicable documents, especially the safety notes and warnings.
Skilled personnel, fitter	<ul style="list-style-type: none"> ➔ Read, observe and follow this manual and the applicable documents, especially the safety notes and warnings.

Tab. 1

1.3 Applicable documents






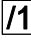
You can find the following documents on our homepage:

Document	Purpose
Catalog	Technical data or application parameters of the module and information on accessories. The last version is always valid.
Assembly and operating manuals for linear motor drives	Detailed information about assembly, adjustment and commissioning of the linear motor drives.
Manual and references for drive control unit IndraDrive CS	Detailed information about assembly, adjustment and commissioning of the drive control unit IndraDrive CS.
General terms of business	Including notes on the warranty.

Tab. 2

1.4 Symbols in the manual

To give you quick access to information, the following symbols will be used in this manual:

Symbol	Meaning
 DANGER	Dangers for persons. Nonobservance causes death or serious injuries.
 WARNING	Dangers for persons. Nonobservance can cause death or serious injuries.
 CAUTION	Dangers for persons. Nonobservance can cause slight injuries.
 NOTICE	Information on avoiding material damage.
✓	Prerequisite for a handling instruction.
→	Handling instruction, also measures in a warning or note.
1. 2. 3. ...	Step-by-step handling instruction. → Observe the order.
 10	Component/spare part represented in a graphic.
 /10/	Part/detail shown in a graphic which is part of a spare part or which must be provided by the customer.
(10), (/10/)	Reference in the text or in a handling instruction to a part that is represented in a graphic.

Tab. 3

2 Basic safety notes

2.1 Intended use

The module is intended for installation in a machine. The requirements of the applicable guidelines must be observed and complied with.

The module may be used only in the context of its defined application parameters.

Any other use or use exceeding that specified is an infringement of use for intended purpose. The manufacturer bears no liability for damage resulting from such use.

2.2 Environmental and operating conditions

- ➔ The module may be used only in the context of its defined application parameters (see catalog and applicable documents).
- ➔ Make sure that the environment is free from splash water and vapors as well as from abrasion or processing dust. Excepted are modules that are designed specially for contaminated environments.

2.3 Controlled production

The module represents the state of the art and the recognized safety rules at the time of delivery. However, it can present risks if, for example:

- The module is not used in accordance with its intended purpose.
- The module is not installed or maintained properly.
- The EC Machinery Directive, the VDE directives, the safety and accident-prevention regulations valid at the usage site, or the safety and installation notes are not observed.

2.3.1 Protective equipment

➔ Provide protective equipment per EC Machinery Directive.

2.3.2 Constructional changes, attachments, or modifications

Additional drill holes, threads, or attachments that are not offered as accessories by SCHUNK may be attached only with permission of SCHUNK.

2.4 Personnel qualification

The assembly, initial commissioning, maintenance, and repair of the drive control unit may be performed only by trained specialist personnel.

Every person called upon by the operator to work on the module must have read and understood the complete Assembly and Operating Manual, especially chapter 2 “Basic safety note”. This applies particularly to occasional personnel such as maintenance personnel.

2.5 Safety-conscious working

- ➔ Avoid any manner of working that may interfere with the function and operational safety of the drive control unit.
- ➔ Observe the safety and accident-prevention regulations valid at the usage site.

3 Commissioning

3.1 Required equipment

The following equipment/requirements are necessary for commissioning a drive with IndraDrive CS:

- ✓ a fully installed drive with an IndraDrive CS drive control unit (for connection schematics, see chapter “Appendices” Figure 13 Connection schematic of IndraDrive CS, page 24)
- ✓ PC with network connection
- ➔ the IndraWorks operating software (from version 08Vxx) installed on the PC
- ➔ Ethernet (patch cable) PC connection cable – IndraDrive CS (order no. 336 432)
- ➔ Commissioning CD with the motor parameters and the files for parameter selection

3.2 Commissioning tasks

 **DANGER**

Danger to life and limb from electric shock!

Touching energized parts can cause death.

- ➔ Only professional electricians may carry out work on electrical systems and equipment under compliance of the rules for working with electrical systems.

 **NOTICE**

Damage to guide block and guide beam!

Activation of the “automatic control loop” command can cause the guide block to crash.

- ➔ Under no circumstances may the automatic control loop setting be activated for linear motors.

1. Wire drive control unit IndraDrive CS to motor and higher-order controller in accordance with the connection schematics.
(see chapter 4, page 24)
2. Create connection between PC and controller.
CAUTION: The control unit has the IP address 192.168.0.1 (default setting)
The PC interface must have a similar IP address, e.g. 192.168.0.11 and the subnet mask must also be identical: 255.255.255.0.
3. Set the controller to Sercos III communication. This is done using the front side panel.

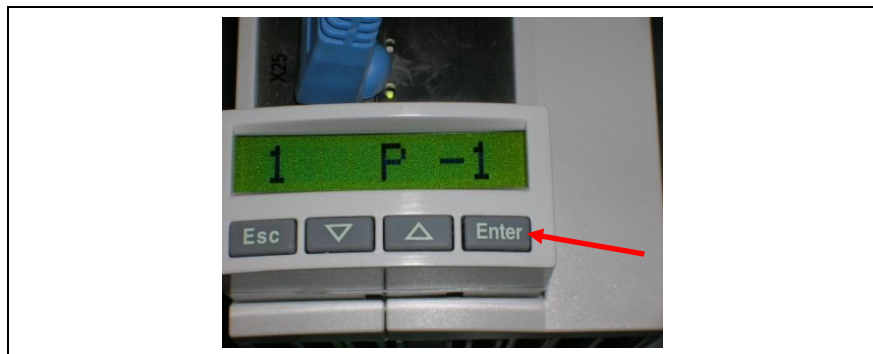




Figure 1 Front Side Panel

- Press the [Enter] key four times.
The desired field bus option flashes on the display.
 - Now use the arrow keys   to select Sercos III.
 - Confirm your selection with the [Enter] key.
The display now shows Sercos III and does **not** flash.
 - Switch off the 24V supply and switch it back on again.
The controller reboots and Sercos III is activated.
To verify: After startup the display should show **P -1**.
(See Figure 1, page 12)
4. Start IndraWorks DS on PC.

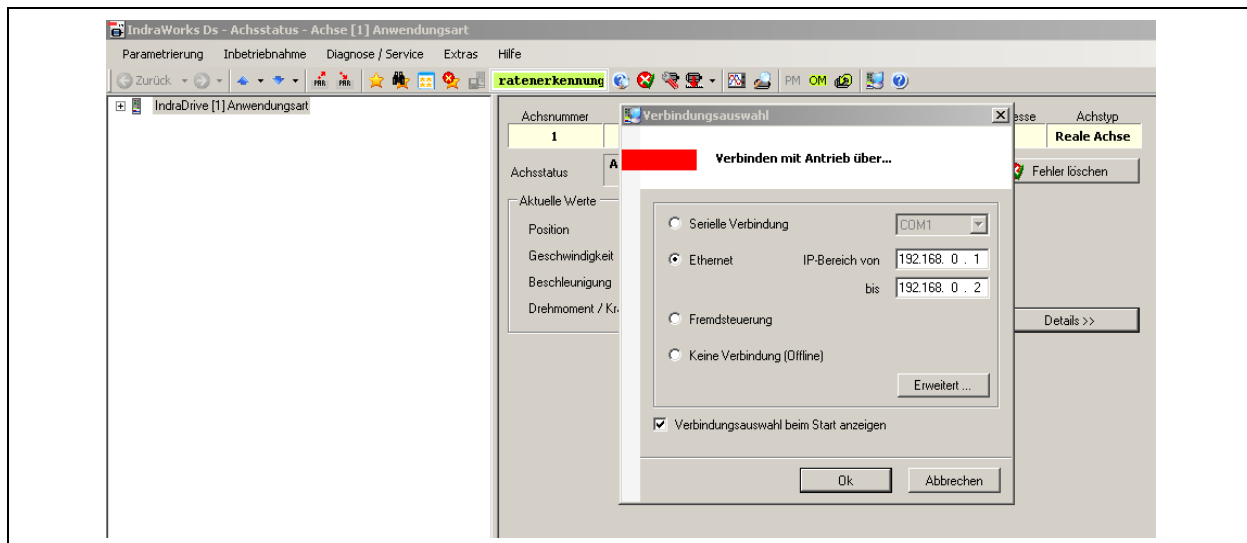


Figure 2

➔ Select Ethernet and set the IP search range.

Note

Operation of IndraWorks is explained in the help menu of the program.

3.2.1 Loading motor parameters

1. In the main window of IndraWorks, select <View> ➔ <Project Explorer>. The Project Explorer appears. (see Figure 3, page 14)

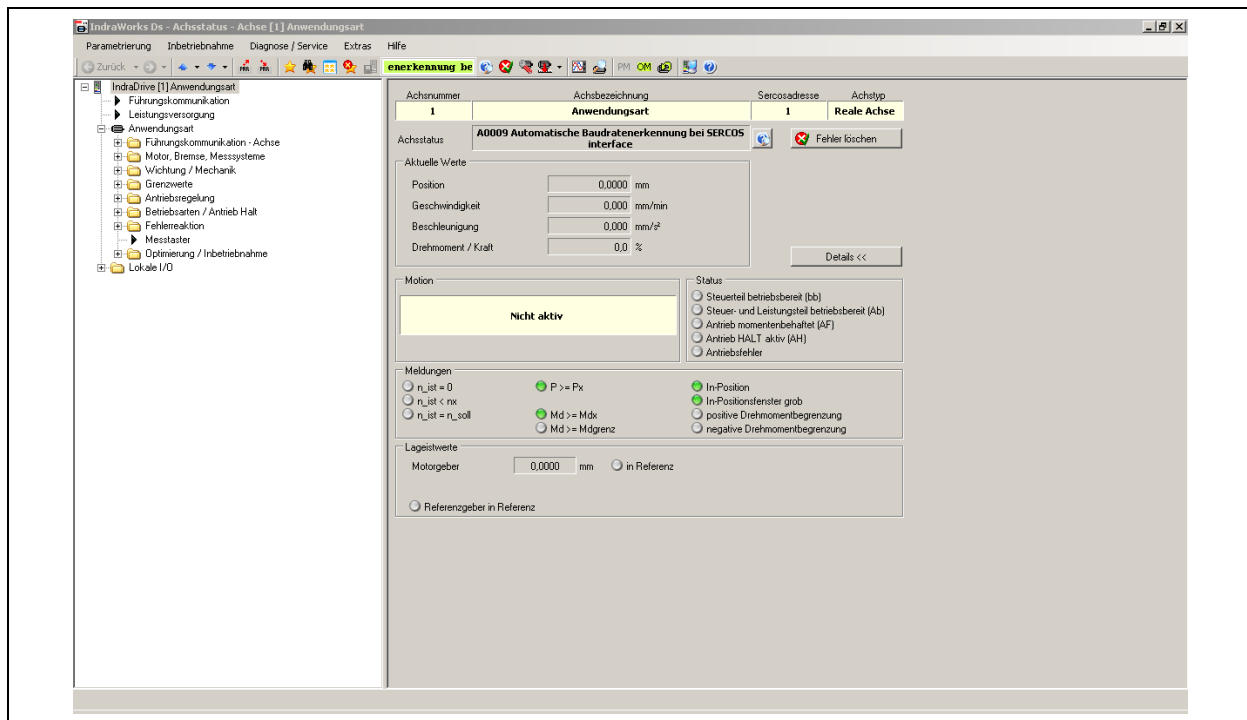


Figure 3 Project Explorer

2. Right click <IndraDrive > and then select <Parameters> → <Load> from the menu which appears:

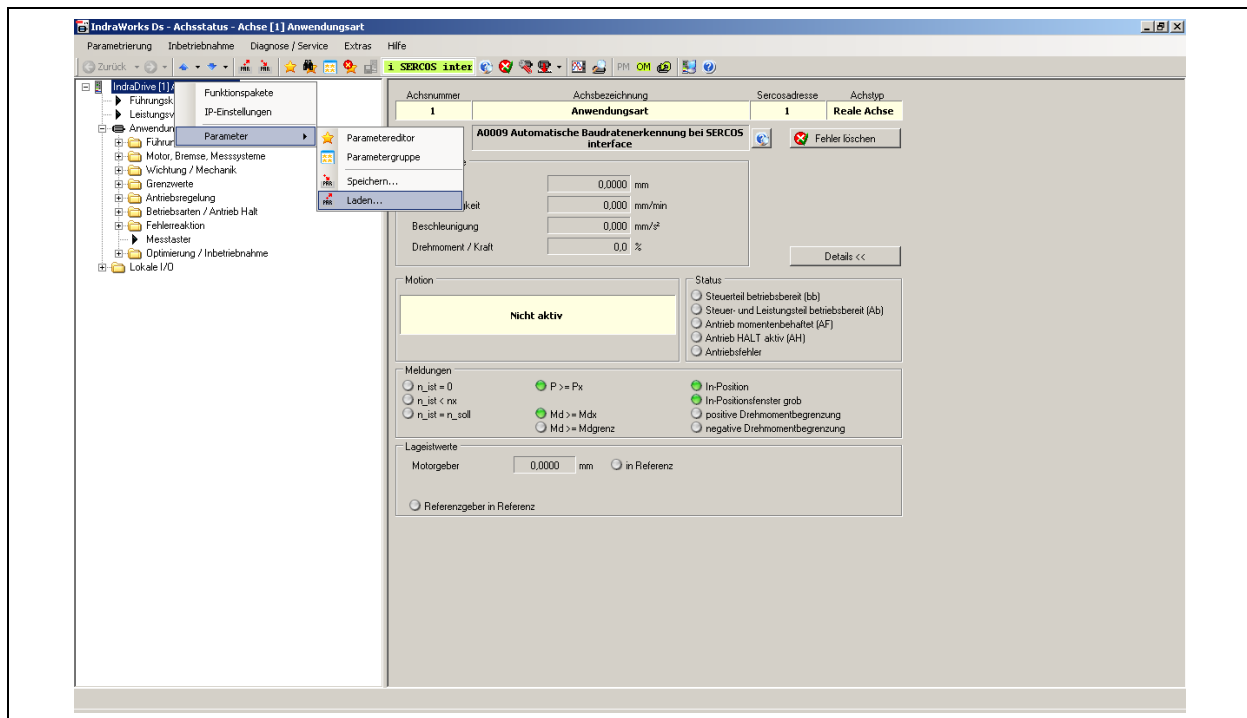


Figure 4 Selecting linear motor type

The dialog box appears:

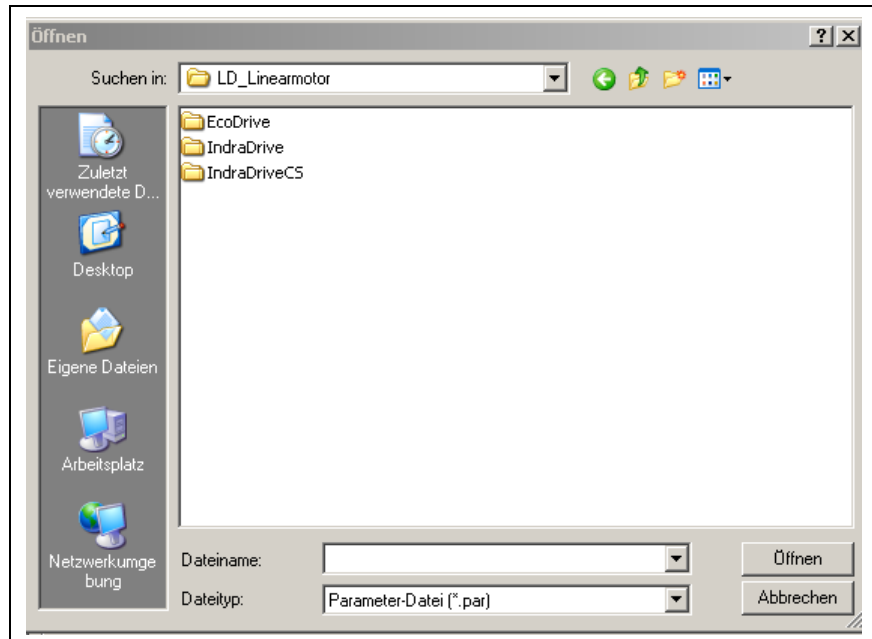


Figure 5 Importing Motor parameters

3. Select the <Motor parameters> folder on the IndraDrive CS commissioning CD.
4. Select relevant motor parameter file from the description key (see figure in the chapter 4.2, page 25) and select drive/linear motor assignment file (see figures in the chapter 4.3, at page 26).
5. Select the folder of the desired linear motor type in the dialog box.
6. Select desired motor parameter file in the next dialog box and open it.

The motor parameters are loaded:

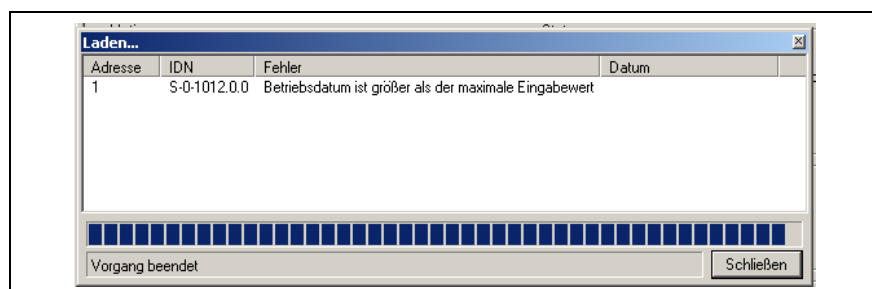


Figure 6 Loading motor parameters

3.2.2 Starting field bus

1. Configure field bus interface in accordance with IndraDrive manufacturer documentation and switch cabinet documentation.
2. Connect and start field bus.
3. Implement and check the wiring for controller enable, stop, reference switch and limit switch, depending on the field bus interface.

3.2.3 Selecting operating mode

 **WARNING**

Danger of injury!

An improperly set operating mode can lead to undesired drive movement.

- ➔ Under no circumstances should the “Torque control” or “Speed control” operating mode be set.
- ➔ Activate contouring error monitoring and configure it sensibly.

➔ Switch the controller to the operating mode (Phase 4).

b appears on the display of the standard operating field of the IndraDrive CS drive control unit.

3.2.4 Testing measuring system

1. In the tree view of the project Explorer, select <IndraDrive> ➔ <Application type>.
2. Right click <Application type> and then select <Diagnosis> ➔ <Status> from the menu which appears. (See Figure 7, page 17)
The dialog box for the <Status> folder appears.

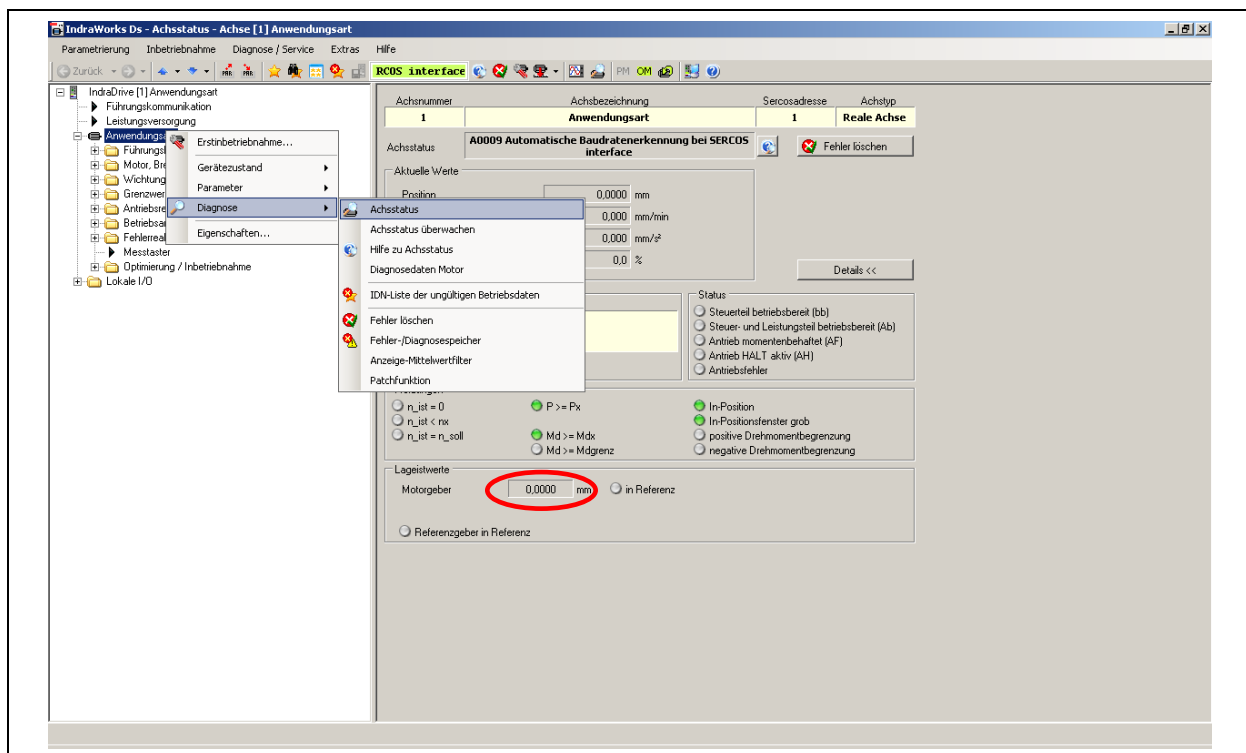


Figure 7 checking status

Checking and enabling functioning of the pneumatic holding brake (optional)

! NOTICE

Possible damage to the linear motor axis!

The guide beam and pneumatic holding brake can be damaged by violent movement of the guide block.

- ➔ Do not try to forcefully move the guide beam or guide block with the brake applied.
- ➔ Ensure that only minimal force is applied to the guide block when you are checking the functioning of the pneumatic holding brakes.

1. Carefully try to move the guided slide with the holding brake on.
The guided slide should not move.
2. Apply 24 V connection to the brake valve.
The pneumatic holding brake (optional) is enabled.

Checking display and scale of the measuring system

1. Move guide block by hand.
The “Position” indicator (see red marking in Figure 7 page 17) may not jump.
2. Place measuring stick (approx. 10cm) on the guide beam and slide the guide block along the measuring stick.
3. Compare the measured traversal path to the display of the actual position.

3.2.5 Control loop monitoring

1. In the tree view of the project Explorer, select <IndraDrive> → <Motion> → <Axis> → <Control> → <Axis control> → <control loop monitoring>.
The dialog box <Control loop monitoring> appears:

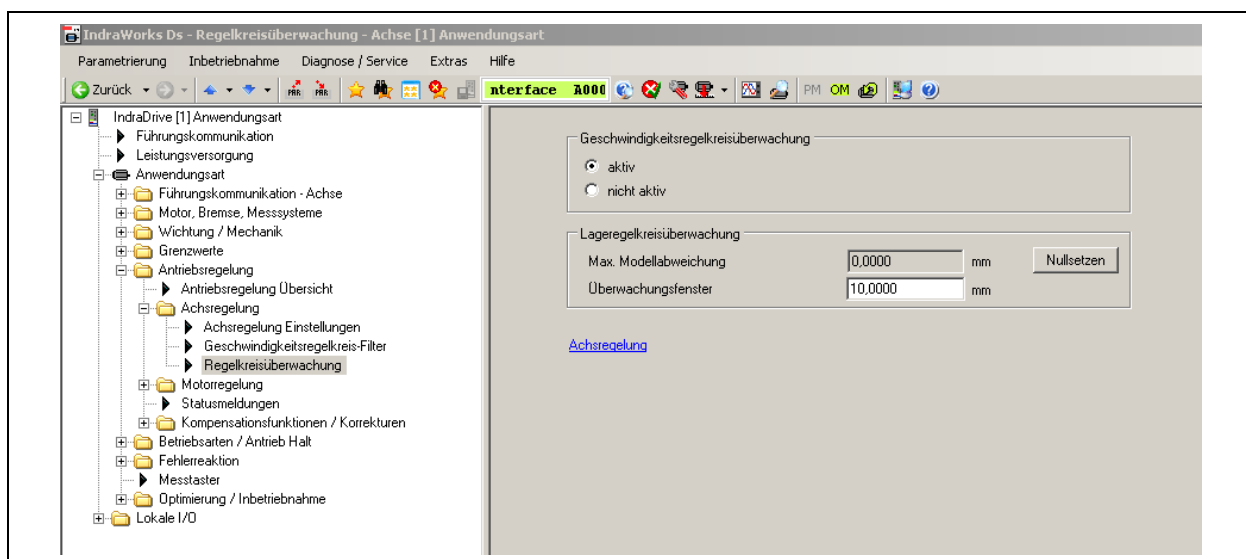


Figure 8 Control loop monitoring

! NOTICE

Damage to guide block and guide beam!

If the Control Loop Monitoring dialog box is deactivated or set too large, the guide block could crash.

➔ Configure control loop monitoring **sensibly**.

2. Activate the <Velocity Loop Monitoring> option field.
3. Configure position loop monitoring.

3.2.6 Connecting IndraDrive CS drive control unit to the power supply

➔ Switch on power at the control switch cabinet (power supply connection: 380 V).

A_b appears on the display of the standard operating field of the IndraDrive CS drive control unit, which indicates that the IndraDrive CS drive control unit is connected to the power supply.

3.2.7 Controller enable (CE)

Note

The controller enable can be activated with either hardware or software, depending on the field bus system.

1. Activate controller enable (CE).
2. Activate „stop“.

A_F appears on the display of the standard operating field of the IndraDrive CS drive control unit.

3.2.8 Setting reference switch

1. In the tree view of the project Explorer, select <IndraDrive> → <Motion> → <Axis> → <Create position data reference> → <Data reference motor encoder>. The dialog box <Data reference motor encoder> appears:

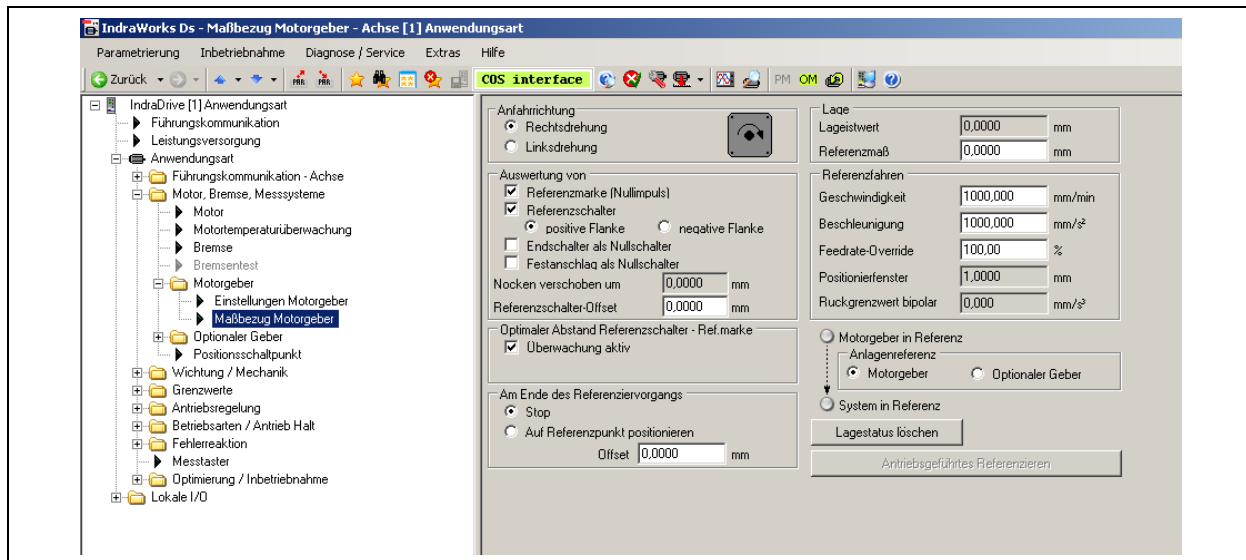


Figure 9 Data reference motor encoder

2. Slowly traverse guide block in both directions via the field bus.
3. Reference, configure and test the direction, velocity and acceleration.

Note

Perform configuration in accordance with the functional description in the documentation of the Rexroth IndraDrive CS drive control unit.

3.2.9 Mounting drive

1. Mount all moving modules (moving mass).
2. Set limit switch.
3. Move drive to the intended position.

3.2.10 Configuring software limit position

1. In the tree view of the Project Explorer, select <IndraDrive> → <Motion> → <Axis> → <Limit values>. The dialog box <Motion Limit Values> appears:

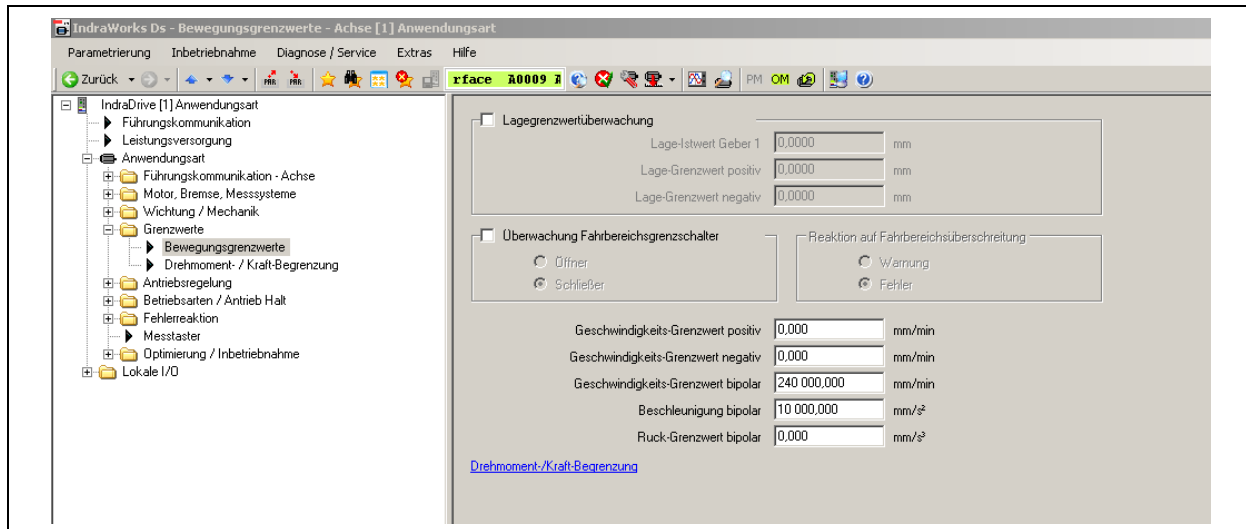


Figure 10 Motion Limit Values

2. Activate the <Position limit value monitoring> option field.
3. Activate the <Velocity Loop Monitoring> option field.
4. Set motion limit values in the dialog box.

3.2.11 Configuring position and speed controller

1. In the tree view of the Project Explorer, select <IndraDrive> → <Motion> → <Axis> → <Control> → <Axis control settings>. The dialog box <Axis Control> appears:

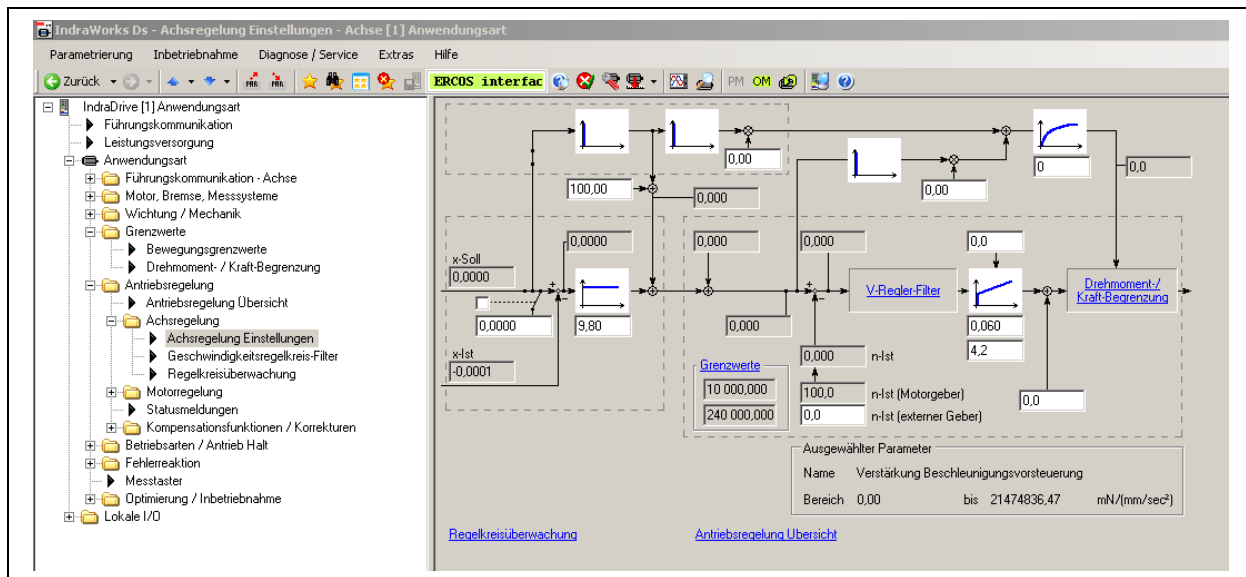


Figure 11 Axis control settings

2. Make fine settings for position controller and speed controller.

Note

Perform configuration in accordance with the functional description in the documentation of the Rexroth IndraDrive CS drive control unit (chapter <Drive control>, section <Axis control (closed-loop operation)>).

3.2.12 Commutation setting (only up to firmware 16V10)

1. In the tree view of the project Explorer, select <IndraDrive> → <Application type> → <Drive control> → <Motor control> → <Commutation setting>. The <Commutation setting> dialog window appears:

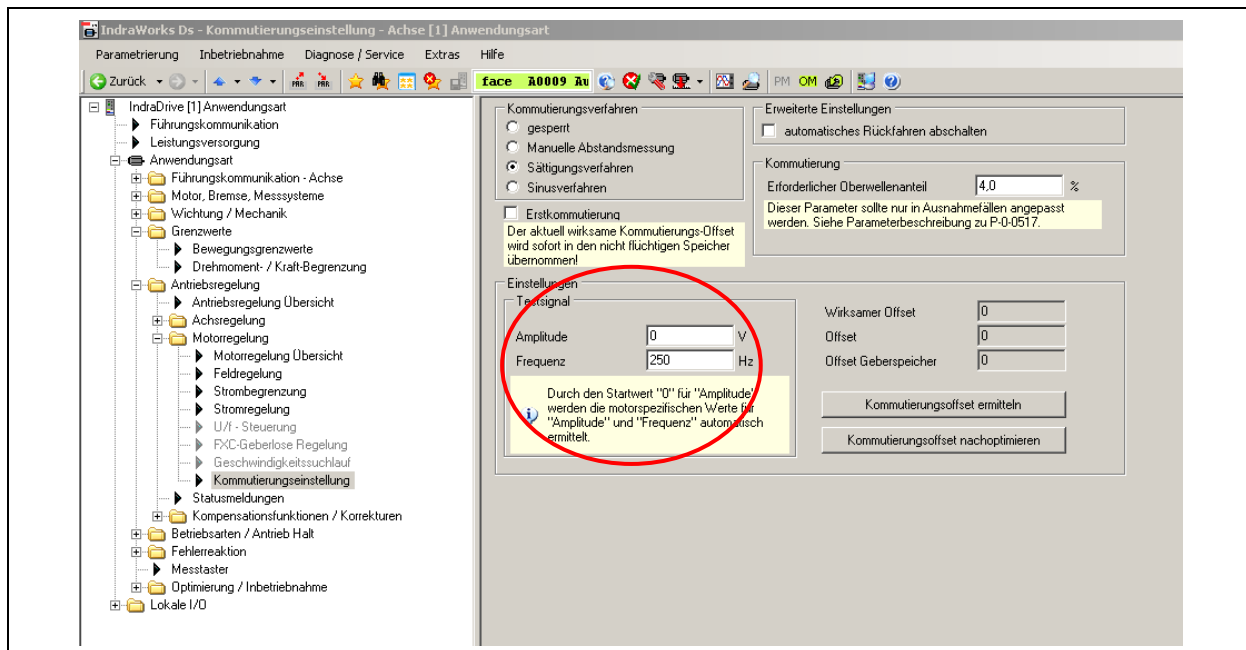


Figure 12 Commutation settings

Up to firmware 16V10, a manual modification needs to be made upon initial commutation of the drive. During its initial commutation, the drive searches independently for a voltage vector (amplitude in the test signal (see Figure 12)). In certain cases, this value is not enough to drive the motor to saturation. Therefore the value needs to be increased manually. For example, if the automatically calculated value is 68V, simply increase it by **40** to 108V. Every value that the controller calculates should be increased by **40**.

Note

With firmware version 16V12 and higher, manual intervention in the parameter settings is no longer necessary. The process of commutation finding was improved in these versions.

4 Appendices

4.1 Connection schematic of IndraDrive CS (Drawing No. 357861)

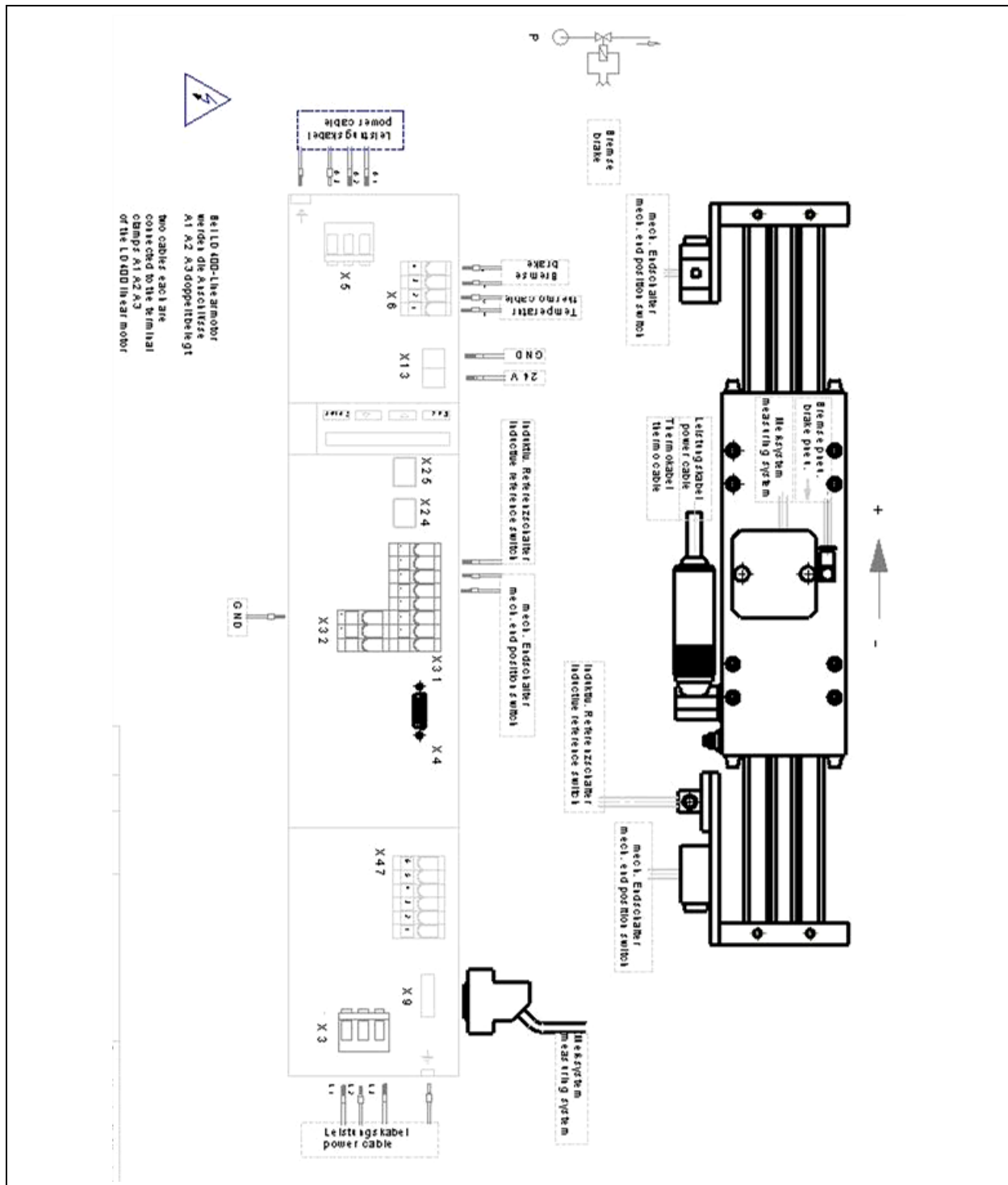


Figure 13 Connection schematic of IndraDrive CS

4.2 Designation key of files for linear motors

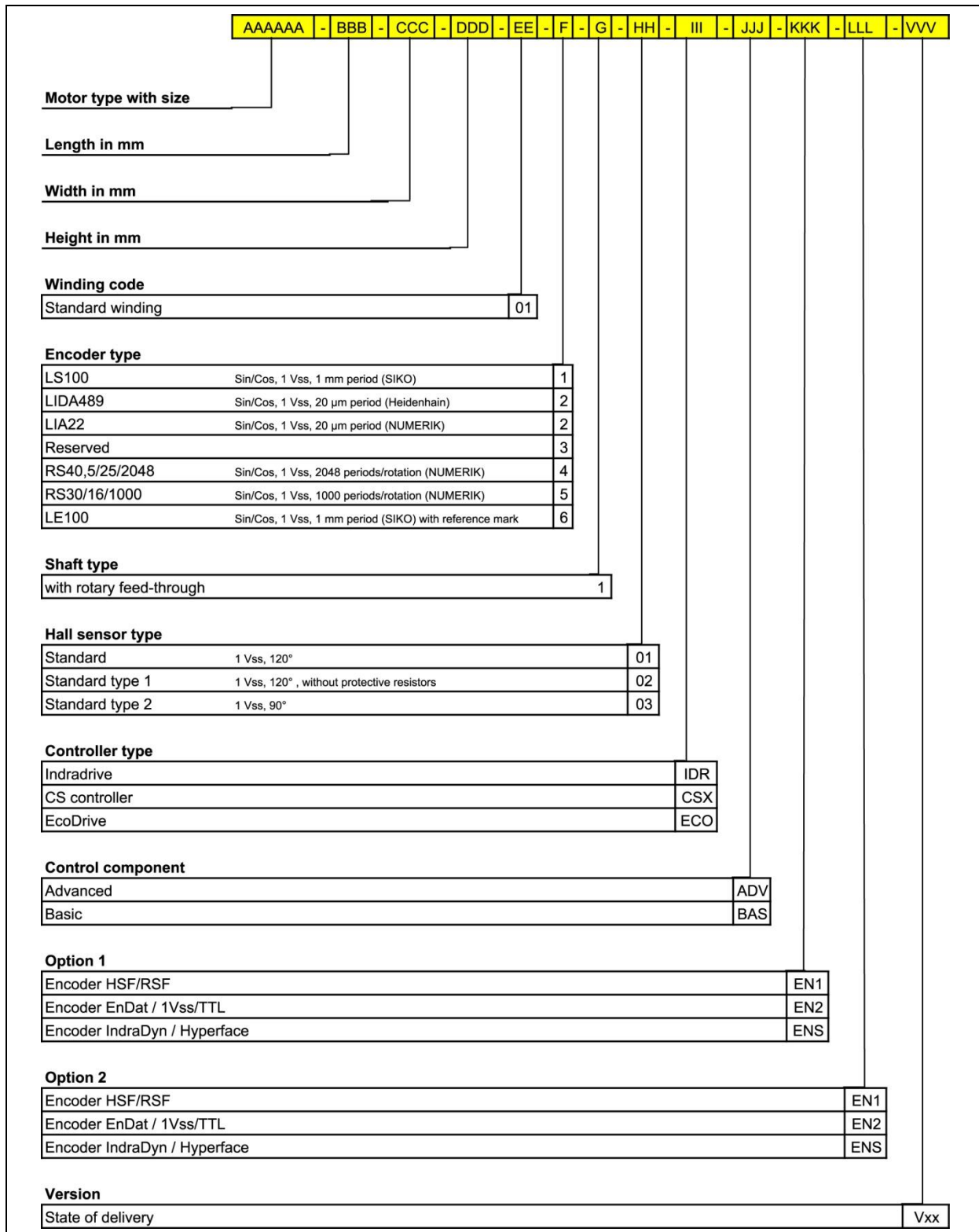


Figure 14 Designation key of files for linear motors

2 ^o ML S 20-85-25	ML S10-250-15	ML S20-250-15	ML S30-250-15	ML S20-250-25	ML S40-250-25	ML S10-170-15	ML S20-170-15	ML S20-170-25	ML S40-170-25
ML D000ML	ML D000T	ML D000T	ML D000T	ML D000T	ML D000T	ML D000M	ML D000M	ML D000ML	ML D000M, ML D000ML
5/8	312,6	423,6	564,7	624,6	726,2	2,2	3,0, 3,6	3,9	6,9/7,7
5/8	3,1	4,2	5,8	6,2	7,2	2,2	3,0	3,9	6,9
3/24	8,1	10,2	14,3	16,2	18,2	8,1	10,2	14,3	32,4
206	123,104	170,143	225,189	268,182	288,247	88	152,144	198	276,288
4/0	7	3,7	2,1	3,5	1,9	7,0	3,4	3,5	1,8/1
4/0	40	40	40	40	40	40	40	40	40
1000	250	500	750	500	1000	250	500	500	1000
0/24	0,085, 0,092	0,065, 0,092	0,065, 0,092	0,065, 0,092	0,065, 0,092	1,29	1,13, 1,37	1,16	1,000
6/85	5,9+1,63/100mm	6,4+1,74/100mm	6,5+2,02/100mm	6,8+1,95/100mm	7,1+1,82/100mm	1,54/102/100mm	6,18/2,7/6,9	2,05	9,254
56	95	95	95	95	95	95	95	95	95
50	50	50	50	50	50	50	50	50	50
15	62	79	112	79	14	62	79	96	14
0/3	0,2	0,2	0,2	0,2	0,2	0,2	0,2	0,2	0,2
900	900	900	900	900	900	500	500	500	500
0,031	0,031	0,031	0,031	0,031	0,031	0,031	0,031	0,031	0,031
5	5	5	5	5	5	5	5	5	5
2 ^o ML S 20-85-25	ML S10-250-15	ML S20-250-15	ML S30-250-15	ML S20-250-25	ML S40-250-25	ML S10-170-15	ML S20-170-15	ML S20-170-25	ML S40-170-25
-4,5	-2,0	-3,1	-4,5	-4,1	-6,1	-1,1	-2,7	-2,8	-5,8
-29,1	-4,8	-12,9	-21,0	-12,9	-29,1	-4,8	-12,9	-12,9	-29,1
-3,6	-1,1	-2,2	-3,6	-3,2	-5,2	-0,2	-1,8	-1,9	-4,9
-28,4	-2,1	-10,2	-18,3	-10,2	-28,4	-2,1	-10,2	-10,2	-28,4
-2,6	-0,1	-1,2	-2,6	-2,2	-4,2	0,8	-0,5	-0,9	-3,9
-23,4	0,9	-7,2	-15,3	-7,2	-23,4	0,9	-7,2	-7,2	-23,4
-1,2	1,3	0,2	-1,2	-0,8	-2,8	4,9	0,6	0,5	-2,5
-19,4	4,9	-3,2	-11,3	-3,2	-19,4	4,9	-3,2	-3,2	-19,4
-3,9	-1,4	-2,5	-3,9	-3,5	-5,5	-0,5	-2,1	-2,2	-5,2
-27,4	-3,1	-11,2	-19,3	-11,2	-27,4	-3,1	-11,2	-11,2	-27,4
-2,9	-0,4	-1,5	-2,9	-2,5	-4,5	0,5	-1,1	-1,2	-4,2
-2,9	-0,4	-1,5	-2,9	-2,5	-4,5	0,5	-1,1	-1,2	-4,2
-24,4	-0,1	-8,2	-16,3	-8,2	-24,4	-0,1	-8,2	-8,2	-24,4
2,0	4,5	3,4	2,0	2,4	0,4	5,4	3,8	3,1	0,7
1,4	3,9	2,8	1,4	1,8	-0,2	4,8	3,2	3,1	0,1
-14,4	9,9	1,8	-6,3	1,8	-14,4	9,9	1,8	1,8	-14,4
5,9	8,4	7,9	5,9	6,3	4,3	9,3	7,7	7,6	4,6
3,4	5,9	4,8	3,4	3,8	1,8	6,8	5,2	5,1	2,1
-4,4	19,9	11,8	-3,7	11,8	-4,4	19,9	11,8	11,8	-4,4
2 ^o ML S 20-85-25	ML S10-250-15	ML S20-250-15	ML S30-250-15	ML S20-250-25	ML S40-250-25	ML S10-170-15	ML S20-170-15	ML S20-170-25	ML S40-170-25
HCS01.1EM0013_-02	HCS01.1EM0018_-03	HCS01.1EM0018_-03	HCS01.1EM0028_-03	HCS01.1EM0018_-03	HCS01.1EM0018_-03	HCS01.1EM0009_-02	HCS01.1EM0018_-03	HCS01.1EM0018_-03	HCS01.1EM0018_-03

Figure 16 Assignment of the motors to the drives and files (page 2 of 2)

4.4 Overview of motor types

Motor desig.	Axis name	Files	Short name	Length	Width	Height	Winding	Sensor type	Shaft type	Hall sensor	Controller	Control component	Option1	Option2	Version	Suffix	
			AAAAA	BBB	CCC	DDD	EE	F	G	HH	III	JJJ	KKK	LLL	VVV		
MLS05-58-15	LD50K LD50KT	Motor desig.	LDS005	- 150	- 058	- 037	- 01	- X	- X	- ??							
		Motor parameter	LDS005	- 150	- 058	- 037	- 01	- 1	- X	- 01	- IDR	- ADV	- EN2	- EN1	- V01	. par	
			LDS005	- 150	- 058	- 037	- 01	- 2	- X	- 01	- IDR	- ADV	- EN2	- EN1	- V01	. par	
			LDS005	- 150	- 058	- 037	- 01	- 3	- X	- 01	- IDR	- ADV	- EN2	- EN1	- V01	. par	
			LDS005	- 150	- 058	- 037	- 01	- 1	- X	- 02	- IDR	- BAS	- ENS	- EN2	- V01	. par	
			LDS005	- 150	- 058	- 037	- 01	- 2	- X	- 02	- IDR	- BAS	- ENS	- EN2	- V01	. par	
			LDS005	- 150	- 058	- 037	- 01	- 3	- X	- 02	- IDR	- BAS	- ENS	- EN2	- V01	. par	
		Motor data	LDS005	- 150	- 058	- 037	- 01	-	-	-	-	-	-	-	MOT	- V01	. xls
Dimensioning	LDS005	- 150	- 058	- 037	- 01	-	-	-	-	-	-	-	DIM	- V01	. xls		
MLS10-58-25	LD100KL	Motor desig.	LDS010	- 250	- 058	- 037	- 01	- X	- X	- ??							
		Motor parameter	LDS010	- 250	- 058	- 037	- 01	- 1	- X	- 01	- IDR	- ADV	- EN2	- EN1	- V01	. par	
			LDS010	- 250	- 058	- 037	- 01	- 2	- X	- 01	- IDR	- ADV	- EN2	- EN1	- V01	. par	
			LDS010	- 250	- 058	- 037	- 01	- 3	- X	- 01	- IDR	- ADV	- EN2	- EN1	- V01	. par	
			LDS010	- 250	- 058	- 037	- 01	- 1	- X	- 02	- IDR	- BAS	- ENS	- EN2	- V01	. par	
			LDS010	- 250	- 058	- 037	- 01	- 2	- X	- 02	- IDR	- BAS	- ENS	- EN2	- V01	. par	
			LDS010	- 250	- 058	- 037	- 01	- 3	- X	- 02	- IDR	- BAS	- ENS	- EN2	- V01	. par	
		Motor data	LDS010	- 250	- 058	- 037	- 01	-	-	-	-	-	-	-	MOT	- V01	. xls
Dimensioning	LDS010	- 250	- 058	- 037	- 01	-	-	-	-	-	-	-	DIM	- V01	. xls		
MLS10-85-15	LD100 LD100U LD100K	Motor desig.	LDS010	- 150	- 085	- 037	- 01	- X	- X	- ??							
		Motor parameter	LDS010	- 150	- 085	- 037	- 01	- 1	- X	- 01	- IDR	- ADV	- EN2	- EN1	- V01	. par	
			LDS010	- 150	- 085	- 037	- 01	- 2	- X	- 01	- IDR	- ADV	- EN2	- EN1	- V01	. par	
			LDS010	- 150	- 085	- 037	- 01	- 3	- X	- 01	- IDR	- ADV	- EN2	- EN1	- V01	. par	
			LDS010	- 150	- 085	- 037	- 01	- 1	- X	- 02	- IDR	- BAS	- ENS	- EN2	- V01	. par	
			LDS010	- 150	- 085	- 037	- 01	- 2	- X	- 02	- IDR	- BAS	- ENS	- EN2	- V01	. par	
			LDS010	- 150	- 085	- 037	- 01	- 3	- X	- 02	- IDR	- BAS	- ENS	- EN2	- V01	. par	
		Motor data	LDS010	- 150	- 085	- 037	- 01	-	-	-	-	-	-	-	MOT	- V01	. xls
Dimensioning	LDS010	- 150	- 085	- 037	- 01	-	-	-	-	-	-	-	DIM	- V01	. xls		
MLD20-85-15	LD200 Double motor	Motor desig.	LDD020	- 150	- 085	- 037	- 01	- X	- X	- ??							
		Motor parameter	LDD020	- 150	- 085	- 037	- 01	- 1	- X	- 01	- IDR	- ADV	- EN2	- EN1	- V01	. par	
			LDD020	- 150	- 085	- 037	- 01	- 2	- X	- 01	- IDR	- ADV	- EN2	- EN1	- V01	. par	
			LDD020	- 150	- 085	- 037	- 01	- 3	- X	- 01	- IDR	- ADV	- EN2	- EN1	- V01	. par	
			LDD020	- 150	- 085	- 037	- 01	- 1	- X	- 02	- IDR	- BAS	- ENS	- EN2	- V01	. par	
			LDD020	- 150	- 085	- 037	- 01	- 2	- X	- 02	- IDR	- BAS	- ENS	- EN2	- V01	. par	
			LDD020	- 150	- 085	- 037	- 01	- 3	- X	- 02	- IDR	- BAS	- ENS	- EN2	- V01	. par	
		Motor data	LDD020	- 150	- 085	- 037	- 01	-	-	-	-	-	-	-	MOT	- V01	. xls
Dimensioning	LDD020	- 150	- 085	- 037	- 01	-	-	-	-	-	-	-	DIM	- V01	. xls		
MLS20-85-25	LD200L LD200UL LD200K	Motor desig.	LDS020	- 250	- 085	- 037	- 01	- X	- X	- ??							
		Motor parameter	LDS020	- 250	- 085	- 037	- 01	- 1	- X	- 01	- IDR	- ADV	- EN2	- EN1	- V01	. par	
			LDS020	- 250	- 085	- 037	- 01	- 2	- X	- 01	- IDR	- ADV	- EN2	- EN1	- V01	. par	
			LDS020	- 250	- 085	- 037	- 01	- 3	- X	- 01	- IDR	- ADV	- EN2	- EN1	- V01	. par	
			LDS020	- 250	- 085	- 037	- 01	- 1	- X	- 02	- IDR	- BAS	- ENS	- EN2	- V01	. par	
			LDS020	- 250	- 085	- 037	- 01	- 2	- X	- 02	- IDR	- BAS	- ENS	- EN2	- V01	. par	
			LDS020	- 250	- 085	- 037	- 01	- 3	- X	- 02	- IDR	- BAS	- ENS	- EN2	- V01	. par	
		Motor data	LDS020	- 250	- 085	- 037	- 01	-	-	-	-	-	-	-	MOT	- V01	. xls
Dimensioning	LDS020	- 250	- 085	- 037	- 01	-	-	-	-	-	-	-	DIM	- V01	. xls		
MLD40-85-25	LD400L Double motor	Motor desig.	LDD040	- 250	- 085	- 037	- 01	- X	- X	- ??							
		Motor parameter	LDD040	- 250	- 085	- 037	- 01	- 1	- X	- 01	- IDR	- ADV	- EN2	- EN1	- V01	. par	
			LDD040	- 250	- 085	- 037	- 01	- 2	- X	- 01	- IDR	- ADV	- EN2	- EN1	- V01	. par	
			LDD040	- 250	- 085	- 037	- 01	- 3	- X	- 01	- IDR	- ADV	- EN2	- EN1	- V01	. par	
			LDD040	- 250	- 085	- 037	- 01	- 1	- X	- 02	- IDR	- BAS	- ENS	- EN2	- V01	. par	
			LDD040	- 250	- 085	- 037	- 01	- 2	- X	- 02	- IDR	- BAS	- ENS	- EN2	- V01	. par	
			LDD040	- 250	- 085	- 037	- 01	- 3	- X	- 02	- IDR	- BAS	- ENS	- EN2	- V01	. par	
		Motor data	LDD040	- 250	- 085	- 037	- 01	-	-	-	-	-	-	-	MOT	- V01	. xls
Dimensioning	LDD040	- 250	- 085	- 037	- 01	-	-	-	-	-	-	-	DIM	- V01	. xls		

Figure 17 Overview of motor types (page 1 of 2)

Motor desig.	Axis name	Files	Files															
			Short name	Length	Width	Height	Winding	Sensor type	Shaft type	Hall sensor	Controller	Control component	Option1	Option2	Version	Suffix		
			AAAAA	- BBB	- CCC	- DDD	- EE	- F	- G	- HH	- III	- JJJ	- KKK	- LLL	- VVV			
MLS30-85-35	LD300 LD300U	Motor desig.	LDS030	- 350	- 085	- 037	- 01	- X	- X	- ??								
		Motor parameter	LDS030	- 350	- 085	- 037	- 01	- 1	- X	- 01	- IDR	- ADV	- EN2	- EN1	- V01	. par		
		LDS030	- 350	- 085	- 037	- 01	- 2	- X	- 01	- IDR	- ADV	- EN2	- EN1	- V01	. par			
		LDS030	- 350	- 085	- 037	- 01	- 3	- X	- 01	- IDR	- ADV	- EN2	- EN1	- V01	. par			
		LDS030	- 350	- 085	- 037	- 01	- 1	- X	- 02	- IDR	- BAS	- ENS	- EN2	- V01	. par			
		LDS030	- 350	- 085	- 037	- 01	- 2	- X	- 02	- IDR	- BAS	- ENS	- EN2	- V01	. par			
		LDS030	- 350	- 085	- 037	- 01	- 3	- X	- 02	- IDR	- BAS	- ENS	- EN2	- V01	. par			
		Motor data	LDS030	- 350	- 085	- 037	- 01	-	-	-	-	-	-	-	MOT	- V01	. xls	
		Dimensioning	LDS030	- 350	- 085	- 037	- 01	-	-	-	-	-	-	-	DIM	- V01	. xls	
MLS30-85-35 x 2	LD600 Double motor	Motor desig.	LDD060	- 350	- 085	- 037	- 01	- X	- X	- ??								
		Motor parameter	LDD060	- 350	- 085	- 037	- 01	- 1	- X	- 01	- IDR	- ADV	- EN2	- EN1	- V01	. par		
		LDD060	- 350	- 085	- 037	- 01	- 2	- X	- 01	- IDR	- ADV	- EN2	- EN1	- V01	. par			
		LDD060	- 350	- 085	- 037	- 01	- 3	- X	- 01	- IDR	- ADV	- EN2	- EN1	- V01	. par			
		LDD060	- 350	- 085	- 037	- 01	- 1	- X	- 02	- IDR	- BAS	- ENS	- EN2	- V01	. par			
		LDD060	- 350	- 085	- 037	- 01	- 2	- X	- 02	- IDR	- BAS	- ENS	- EN2	- V01	. par			
		LDD060	- 350	- 085	- 037	- 01	- 3	- X	- 02	- IDR	- BAS	- ENS	- EN2	- V01	. par			
		Motor data	LDD060	- 350	- 085	- 037	- 01	-	-	-	-	-	-	-	MOT	- V01	. xls	
		Dimensioning	LDD060	- 350	- 085	- 037	- 01	-	-	-	-	-	-	-	DIM	- V01	. xls	
MLS10-250-15	LD100T LD100TU	Motor desig.	LDS010	- 150	- 250	- 037	- 01	- X	- X	- ??								
		Motor parameter	LDS010	- 150	- 250	- 037	- 01	- 1	- X	- 01	- IDR	- ADV	- EN2	- EN1	- V01	. par		
		LDS010	- 150	- 250	- 037	- 01	- 2	- X	- 01	- IDR	- ADV	- EN2	- EN1	- V01	. par			
		LDS010	- 150	- 250	- 037	- 01	- 3	- X	- 01	- IDR	- ADV	- EN2	- EN1	- V01	. par			
		LDS010	- 150	- 250	- 037	- 01	- 1	- X	- 02	- IDR	- BAS	- ENS	- EN2	- V01	. par			
		LDS010	- 150	- 250	- 037	- 01	- 2	- X	- 02	- IDR	- BAS	- ENS	- EN2	- V01	. par			
		LDS010	- 150	- 250	- 037	- 01	- 3	- X	- 02	- IDR	- BAS	- ENS	- EN2	- V01	. par			
		Motor data	LDS010	- 150	- 250	- 037	- 01	-	-	-	-	-	-	-	MOT	- V01	. xls	
		Dimensioning	LDS010	- 150	- 250	- 037	- 01	-	-	-	-	-	-	-	DIM	- V01	. xls	
MLS20-250-15	LD200T LD200TU	Motor desig.	LDS020	- 150	- 250	- 037	- 01	- X	- X	- ??								
		Motor parameter	LDS020	- 150	- 250	- 037	- 01	- 1	- X	- 01	- IDR	- ADV	- EN2	- EN1	- V01	. par		
		LDS020	- 150	- 250	- 037	- 01	- 2	- X	- 01	- IDR	- ADV	- EN2	- EN1	- V01	. par			
		LDS020	- 150	- 250	- 037	- 01	- 3	- X	- 01	- IDR	- ADV	- EN2	- EN1	- V01	. par			
		LDS020	- 150	- 250	- 037	- 01	- 1	- X	- 02	- IDR	- BAS	- ENS	- EN2	- V01	. par			
		LDS020	- 150	- 250	- 037	- 01	- 2	- X	- 02	- IDR	- BAS	- ENS	- EN2	- V01	. par			
		LDS020	- 150	- 250	- 037	- 01	- 3	- X	- 02	- IDR	- BAS	- ENS	- EN2	- V01	. par			
		Motor data	LDS020	- 150	- 250	- 037	- 01	-	-	-	-	-	-	-	MOT	- V01	. xls	
		Dimensioning	LDS020	- 150	- 250	- 037	- 01	-	-	-	-	-	-	-	DIM	- V01	. xls	
MLS30-250-15	LD300T LD300TU	Motor desig.	LDS030	- 150	- 250	- 037	- 01	- X	- X	- ??								
		Motor parameter	LDS030	- 150	- 250	- 037	- 01	- 1	- X	- 01	- IDR	- ADV	- EN2	- EN1	- V01	. par		
		LDS030	- 150	- 250	- 037	- 01	- 2	- X	- 01	- IDR	- ADV	- EN2	- EN1	- V01	. par			
		LDS030	- 150	- 250	- 037	- 01	- 3	- X	- 01	- IDR	- ADV	- EN2	- EN1	- V01	. par			
		LDS030	- 150	- 250	- 037	- 01	- 1	- X	- 02	- IDR	- BAS	- ENS	- EN2	- V01	. par			
		LDS030	- 150	- 250	- 037	- 01	- 2	- X	- 02	- IDR	- BAS	- ENS	- EN2	- V01	. par			
		LDS030	- 150	- 250	- 037	- 01	- 3	- X	- 02	- IDR	- BAS	- ENS	- EN2	- V01	. par			
		Motor data	LDS030	- 150	- 250	- 037	- 01	-	-	-	-	-	-	-	MOT	- V01	. xls	
		Dimensioning	LDS030	- 150	- 250	- 037	- 01	-	-	-	-	-	-	-	DIM	- V01	. xls	
MLS20-250-25	LD200TL LD200TUL	Motor desig.	LDS020	- 250	- 250	- 037	- 01	- X	- X	- ??								
		Motor parameter	LDS020	- 250	- 250	- 037	- 01	- 1	- X	- 01	- IDR	- ADV	- EN2	- EN1	- V01	. par		
		LDS020	- 250	- 250	- 037	- 01	- 2	- X	- 01	- IDR	- ADV	- EN2	- EN1	- V01	. par			
		LDS020	- 250	- 250	- 037	- 01	- 3	- X	- 01	- IDR	- ADV	- EN2	- EN1	- V01	. par			
		LDS020	- 250	- 250	- 037	- 01	- 1	- X	- 02	- IDR	- BAS	- ENS	- EN2	- V01	. par			
		LDS020	- 250	- 250	- 037	- 01	- 2	- X	- 02	- IDR	- BAS	- ENS	- EN2	- V01	. par			
		LDS020	- 250	- 250	- 037	- 01	- 3	- X	- 02	- IDR	- BAS	- ENS	- EN2	- V01	. par			
		Motor data	LDS020	- 250	- 250	- 037	- 01	-	-	-	-	-	-	-	MOT	- V01	. xls	
		Dimensioning	LDS020	- 250	- 250	- 037	- 01	-	-	-	-	-	-	-	DIM	- V01	. xls	
MLS40-250-25	LD400TL LD400TUL	Motor desig.	LDS040	- 250	- 250	- 037	- 01	- X	- X	- ??								
		Motor parameter	LDS040	- 250	- 250	- 037	- 01	- 1	- X	- 01	- IDR	- ADV	- EN2	- EN1	- V01	. par		
		LDS040	- 250	- 250	- 037	- 01	- 2	- X	- 01	- IDR	- ADV	- EN2	- EN1	- V01	. par			
		LDS040	- 250	- 250	- 037	- 01	- 3	- X	- 01	- IDR	- ADV	- EN2	- EN1	- V01	. par			
		LDS040	- 250	- 250	- 037	- 01	- 1	- X	- 02	- IDR	- BAS	- ENS	- EN2	- V01	. par			
		LDS040	- 250	- 250	- 037	- 01	- 2	- X	- 02	- IDR	- BAS	- ENS	- EN2	- V01	. par			
		LDS040	- 250	- 250	- 037	- 01	- 3	- X	- 02	- IDR	- BAS	- ENS	- EN2	- V01	. par			
		Motor data	LDS040	- 250	- 250	- 037	- 01	-	-	-	-	-	-	-	MOT	- V01	. xls	
		Dimensioning	LDS040	- 250	- 250	- 037	- 01	-	-	-	-	-	-	-	DIM	- V01	. xls	
MLS60-250-25	LD600TL LD600TUL	Motor desig.	LDS060	- 250	- 250	- 037	- 01	- X	- X	- ??								
		Motor parameter	LDS060	- 250	- 250	- 037	- 01	- 1	- X	- 01	- IDR	- ADV	- EN2	- EN1	- V01	. par		
		LDS060	- 250	- 250	- 037	- 01	- 2	- X	- 01	- IDR	- ADV	- EN2	- EN1	- V01	. par			
		LDS060	- 250	- 250	- 037	- 01	- 3	- X	- 01	- IDR	- ADV	- EN2	- EN1	- V01	. par			
		LDS060	- 250	- 250	- 037	- 01	- 1	- X	- 02	- IDR	- BAS	- ENS	- EN2	- V01	. par			
		LDS060	- 250	- 250	- 037	- 01	- 2	- X	- 02	- IDR	- BAS	- ENS	- EN2	- V01	. par			
		LDS060	- 250	- 250	- 037	- 01	- 3	- X	- 02	- IDR	- BAS	- ENS	- EN2	- V01	. par			
		Motor data	LDS060	- 250	- 250	- 037	- 01	-	-	-	-	-	-	-	MOT	- V01	. xls	
		Dimensioning	LDS060	- 250	- 250	- 037	- 01	-	-	-	-	-	-	-	DIM	- V01	. xls	
MLS60-250-25 x 2	LD1200 Double motor	Motor desig.	LDD120	- 250	- 250	- 037	- 01	- X	- X	- ??								
		Motor parameter	LDD120	- 250	- 250	- 037	- 01	- 1	- X	- 01	- IDR	- ADV	- EN2	- EN1	- V01	. par		
		LDD120	- 250	- 250	- 037	- 01	- 2	- X	- 01	- IDR	- ADV	- EN2	- EN1	- V01	. par			
		LDD120	- 250	- 250	- 037	- 01	- 3	- X	- 01	- IDR	- ADV	- EN2	- EN1	- V01	. par			
		LDD120	- 250	- 250	- 037	- 01	- 1	- X	- 02	- IDR	- BAS	- ENS	- EN2	- V01	. par			
		LDD120	- 250	- 250	- 037	- 01	- 2	- X	- 02	- IDR	- BAS	- ENS	- EN2	- V01	. par			
		LDD120	- 250	- 250	- 037	- 01	- 3	- X	- 02	- IDR	- BAS	- ENS	- EN2	- V01	. par			
		Motor data	LDD120	- 250	- 250	- 037	- 01	-	-	-	-	-	-	-	MOT	- V01	. xls	
		Dimensioning	LDD120	- 250	- 250	- 037	- 01	-	-	-	-	-	-	-	DIM	- V01	. xls	

Figure 18 Overview of motor types (page 2 of 2)

5 Contact



GERMANY – HEAD OFFICE

SCHUNK GmbH & Co. KG
Spann- und Greiftechnik
Bahnhofstrasse 106 – 134
D-Lauffen/Neckar
Tel. +49-7133-103-0
Fax +49-7133-103-2399
info@de.schunk.com
www.schunk.com



CANADA

SCHUNK Intec Corp.
190 Britannia Road East,
Units 23-24
Mississauga, ON L4Z 1W6
Tel. +1-905-712-2200
Fax +1-905-712-2210
info@ca.schunk.com
www.ca.schunk.com



DENMARK

SCHUNK Intec A/S
Storhaven 7
7100 Vejle
Tel. +45-43601339
Fax +45-43601492
info@dk.schunk.com
www.dk.schunk.com



HUNGARY

SCHUNK Intec Kft.
Széchenyi út. 70.
3530 Miskolc
Tel. +36-46-50900-7
Fax +36-46-50900-6
info@hu.schunk.com
www.hu.schunk.com



AUSTRIA

SCHUNK Intec GmbH
Holzbauernstr. 20
4050 Traun
Tel. +43-7229-65770-0
Fax +43-7229-65770-14
info@at.schunk.com
www.at.schunk.com



CHINA

SCHUNK GmbH & Co.KG
Shanghai
Representative Office
777 Zhao Jia Bang Road
Pine City Hotel, Room 923
Xuhui District
Shanghai 200032
Tel. +86-21-64433177
Fax +86-21-64431922
info@cn.schunk.com
www.cn.schunk.com



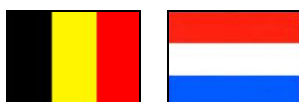
FRANCE

SCHUNK Intec SARL
Parc d'Activités des Trois Noyers
15, Avenue James de Rothschild
Ferrières-en-Brie
77614 Marne-la-Vallée
Cedex 3
Tel. +33-1-64 66 38 24
Fax +33-1-64 66 38 23
info@fr.schunk.com
www.fr.schunk.com



INDIA

SCHUNK India Branch
Office
80 B, Yeswanthpur
Industrial Suburbs,
Bangalore 560 022
Tel. +91-80-41277361
Fax +91-80-41277363
info@in.schunk.com
www.in.schunk.com



BELGIUM, LUXEMBOURG

SCHUNK Intec N.V./S.A.
Bedrijvencentrum Regio Aalst
Industrielaan 4, Zuid III
9320 Aalst-Erembodegem
Tel. +32-53-853504
Fax +32-53-836022
info@be.schunk.com
www.be.schunk.com



CZECH REPUBLIC

SCHUNK Intec s.r.o.
Ernsta Macha 1
643 00 Brno
Tel. +420-545 229 095
Fax +420-545 220 508
info@cz.schunk.com
www.cz.schunk.com



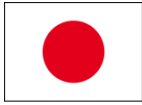
GREAT BRITAIN, IRELAND

SCHUNK Intec Ltd.
Cromwell Business Centre
10 Howard Way,
Interchange Park
Newport Pagnell MK16 9QS
Tel. +44-1908-611127
Fax +44-1908-615525
info@gb.schunk.com
www.gb.schunk.com



ITALY

SCHUNK Intec S.r.l.
Via Barozzo
22075 Lurate Caccivio
(CO)
Tel. +39-031-4951311
Fax +39-031-4951301
info@it.schunk.com
www.it.schunk.com

**JAPAN**

SCHUNK Intec K.K.
45-28 3-Chome Sanno
Ohta-Ku Tokyo 143-0023
Tel. +81-33-7743731
Fax +81-33-7766500
s-takano@tbk-hand.co.jp
www.tbk-hand.co.jp

**POLAND**

SCHUNK Intec Sp.z o.o.
Stara Iwiczna,
ul. Sloneczna 116 A
05-500 Piaseczno
Tel. +48-22-7262500
Fax +48-22-7262525
info@pl.schunk.com
www.pl.schunk.com

**SOUTH KOREA**

SCHUNK Intec Korea Ltd.
907 Joongang
Induspia 2 Bldg.,
144-5 Sangdaewon-dong
Jungwon-gu, Seongnam-si
Kyunggi-do, 462-722
Tel. +82-31-7376141
Fax +82-31-7376142
info@kr.schunk.com
www.kr.schunk.com

**SWITZERLAND, LIECHTENSTEIN**

SCHUNK Intec AG
Soodring 19
8134 Adliswil 2
Tel. +41-44-7102171
Fax +41-44-7102279
info@ch.schunk.com
www.ch.schunk.com

**MEXICO, VENEZUELA**

SCHUNK Intec S.A. de C.V.
Av. Luis Vega y Monroy # 332
Fracc. Plazas de Sol
Santiago de Querétaro,
Qro. 76099
Tel. +52-442-223-6525
Fax +52-442-223-7665
info@mx.schunk.com
www.mx.schunk.com

**PORTUGAL**

Sales Representative
Victor Marques
Tel. +34-937-556 020
Fax +34-937-908 692
Mobil +351-963-786 445
info@pt.schunk.com
www.pt.schunk.com

**SPAIN**

SCHUNK Intec S.L.
Foneria, 27
08304 Mataró (Barcelona)
Tel. +34-937 556 020
Fax +34-937 908 692
info@es.schunk.com
www.es.schunk.com

**TURKEY**

SCHUNK Intec
Bağlama Sistemleri ve
Otomasyon San. ve Tic. Ltd. Şti.
Küçükyalı İş Merkezi
Girne Mahallesi
Irmak Sodak, A Blok, No: 9
34852 Maltepe, İstanbul
Tel. +90-216-366-2111
Fax +90-216-366-2277
info@tr.schunk.com
www.tr.schunk.com

**NETHERLANDS**

SCHUNK Intec B.V.
Speldenmakerstraat 3d
5232 BH 's-Hertogenbosch
Tel. +31-73-6441779
Fax +31-73-6448025
info@nl.schunk.com
www.nl.schunk.com

**SLOVAKIA**

SCHUNK Intec s.r.o.
Mostná 62
919 01 Nitra
Tel. +421-37-3260610
Fax +421-37-6421906
info@sk.schunk.com
www.sk.schunk.com

**SWEDEN**

SCHUNK Intec AB
Morabergsvägen 28
152 42 Södertälje
Tel. +46-8 554 421 00
Fax +46-8 554 421 01
info@se.schunk.com
www.se.schunk.com

**USA**

SCHUNK Intec Inc.
211 Kitty Hawk Drive
Morrisville, NC 27560
Tel. +1-919-572-2705
Fax +1-919-572-2818
info@us.schunk.com
www.us.schunk.com

