

ROTA FSW

Chuck quick change

Superior Clamping and Gripping



Product overview



Gripping Systems

Clamping Technology



Chuck Jaws



Stationary Workholding



Lathe Chucks



Toolholders



Hydraulic Expansion Technology



Manual Lathe Chucks



Power Lathe Chucks with Jaw Quick-change System



Power Lathe Chucks with Through-hole



Power Lathe Chucks without Through-hole



Pneumatic Power Chucks



Steady Rests

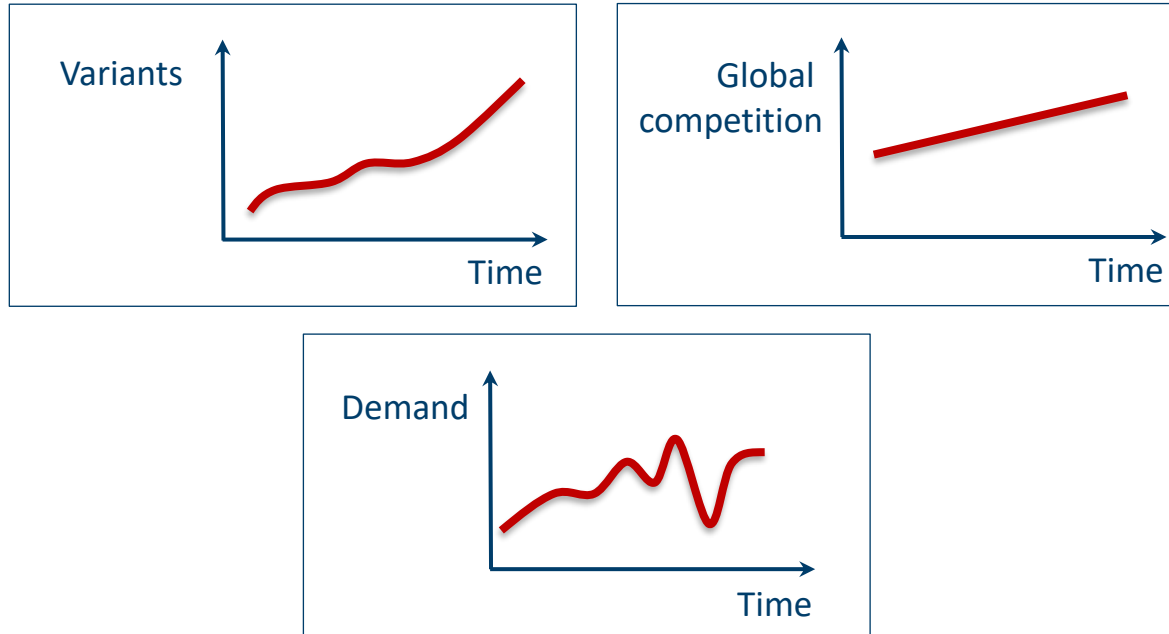


Quick-change Systems



Customized Solutions

Challenges



Flexibility and und set-up time optimization

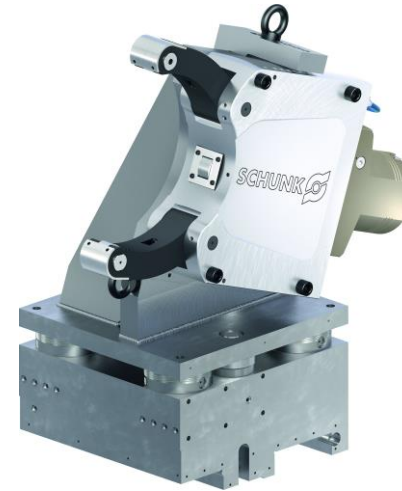
Overview

Quick-change Systems

ROTA FSW



ZENTRICO LSW



ROTA FSW

Example of application



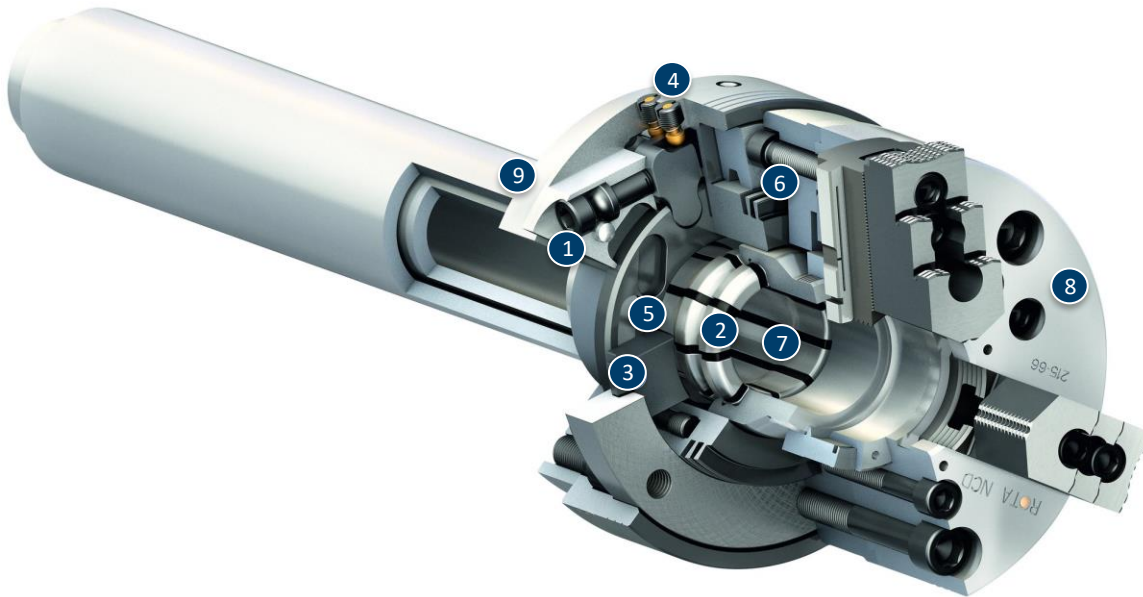
Clamping device:

ROTA THW 500 in combination with FSW system on Doosan Puma 500.

Features/Application:

Fast and precise jaw change. Highest flexibility thanks to the quick-change system FSW. Chuck change by operating one screw.

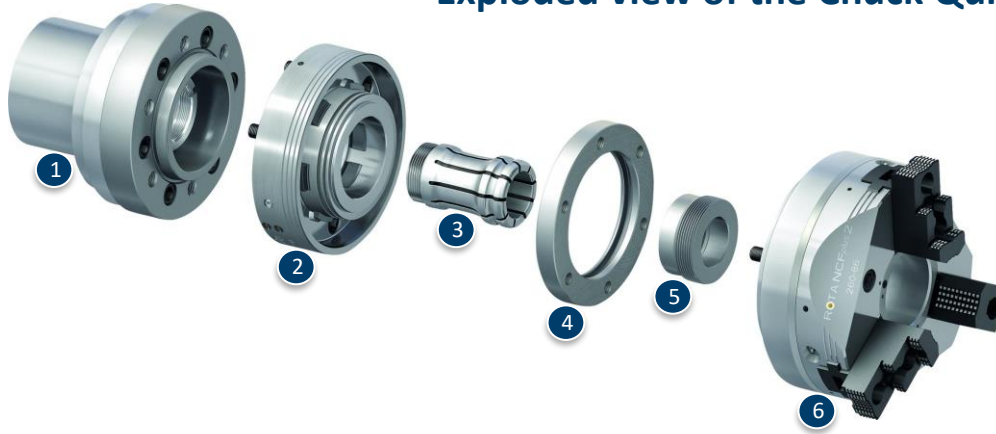
ROTA FSW



- ① Operation via hexagon connection
- ② Flexible adapter
- ③ Large surfaces
- ④ Indicator pins
- ⑤ Patented drive concept
- ⑥ Highly precise flexible taper centering
- ⑦ Dirt-resistant design
- ⑧ Lathe chuck
- ⑨ Machine spindle

ROTA FSW

Exploded view of the Chuck Quick-change System



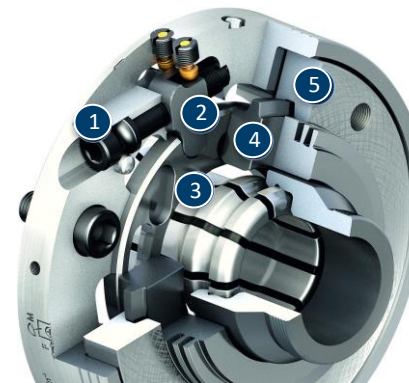
- 1 Spindle
- 2 Chuck quick-change
- 3 Flexible adapter
- 4 Clamping ring
- 5 Draw tube adapter
- 6 Lathe chuck

Actuation for changing and clamping with just one screw



- 1 Actuating screw

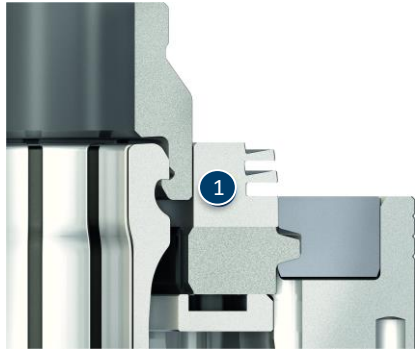
Patented drive concept



- 1 Screw
- 2 Lever
- 3 Drive ring
- 4 Clamping slide
- 5 Clamping ring

ROTA FSW

Patented flexible taper for maximum centering accuracy



1 Flexible taper

Change without twisting the chuck



1 Positioning block

Low height



Flexible adapter with large through-hole



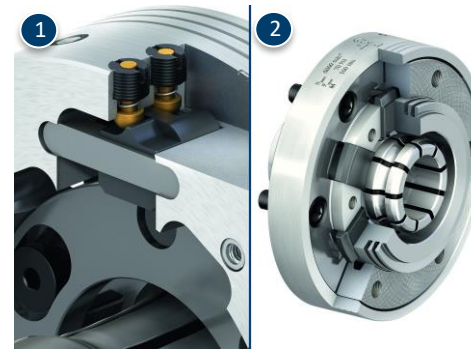
1 Through-hole

ROTA FSW

Higher pull-down force under rotation



Clamping position



- 1 Visual display
- 2 Clamping position of the FSW

Change position



- 1 Visual display
- 2 FSW change position

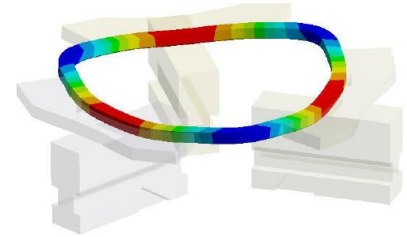
Variants of ROTA FSW

Technical data	ROTA FSW A8	ROTA FSW A11	ROTA FSW A15
Max. RPM [min^{-1}]	6000	4200	3500
Max. actuating force [kN]	70	133	140
Max. actuating force [Nm]	100	150	200

SCHUNK Services

Engineering

- Dimensioning of special plates designed to the manufacturing specifications
- Development of special solutions together with the customer
- FEM analysis for critical components



Testing

- Endurance tests with all new developments
- Abrasion checking
- Measurement of accuracy



Service

- Initial operation of customer's solution
- Inspection and maintenance
- Repairs



Superior Clamping and Gripping



© 2021 SCHUNK GmbH & Co. KG
schunk.com