

# ROTA 2B

Power Lathe Chucks without Through-hole

Superior Clamping and Gripping



# Product overview



## Gripping Systems

## Clamping Technology



Chuck Jaws



Stationary Workholding



Lathe Chucks



Toolholders



Hydraulic Expansion Technology



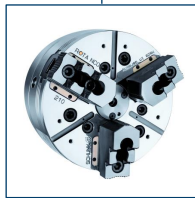
Manual Lathe Chucks



Power Lathe Chucks with Jaw Quick-change System



Power Lathe Chucks with Through-hole



Power Lathe Chucks without Through-hole



Pneumatic Power Chucks



Steady Rests

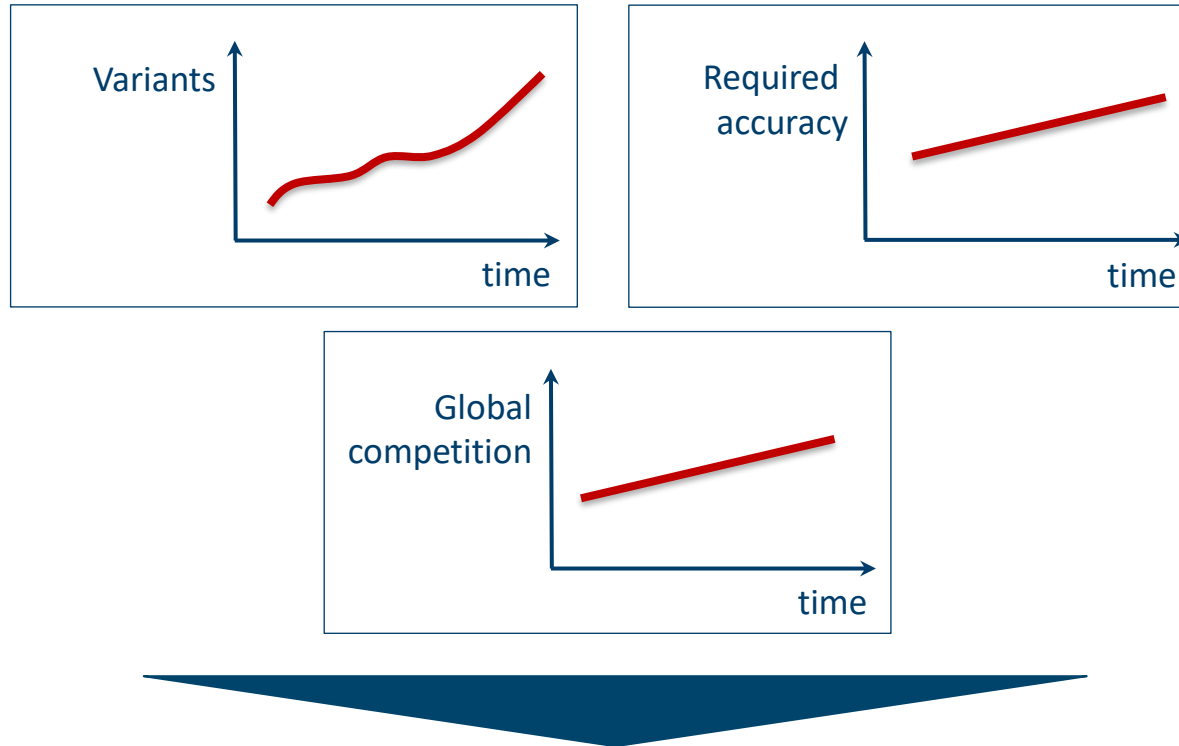


Quick-change Systems



Customized Solutions

# Challenges

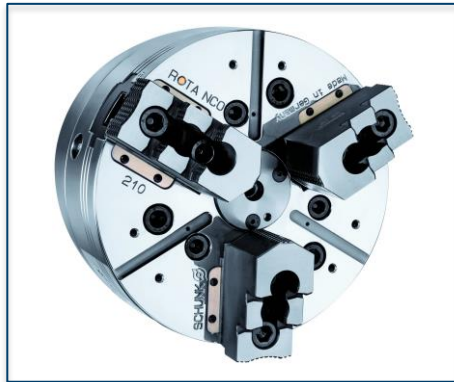


Requirements on the clamping fixture: efficiency, flexibility and...

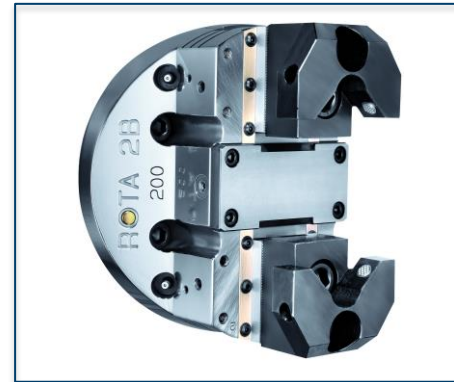
# ROTA overview

## Power Lathe Chucks without Through-hole

ROTA NCO



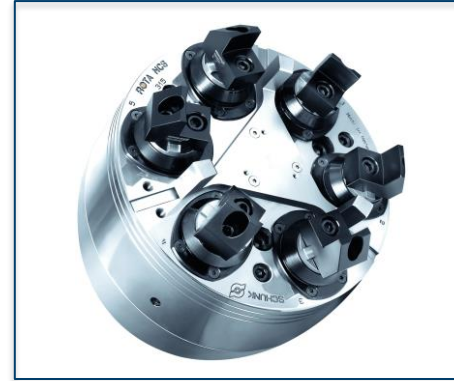
ROTA 2B



ROTA NCR/ NCR-A

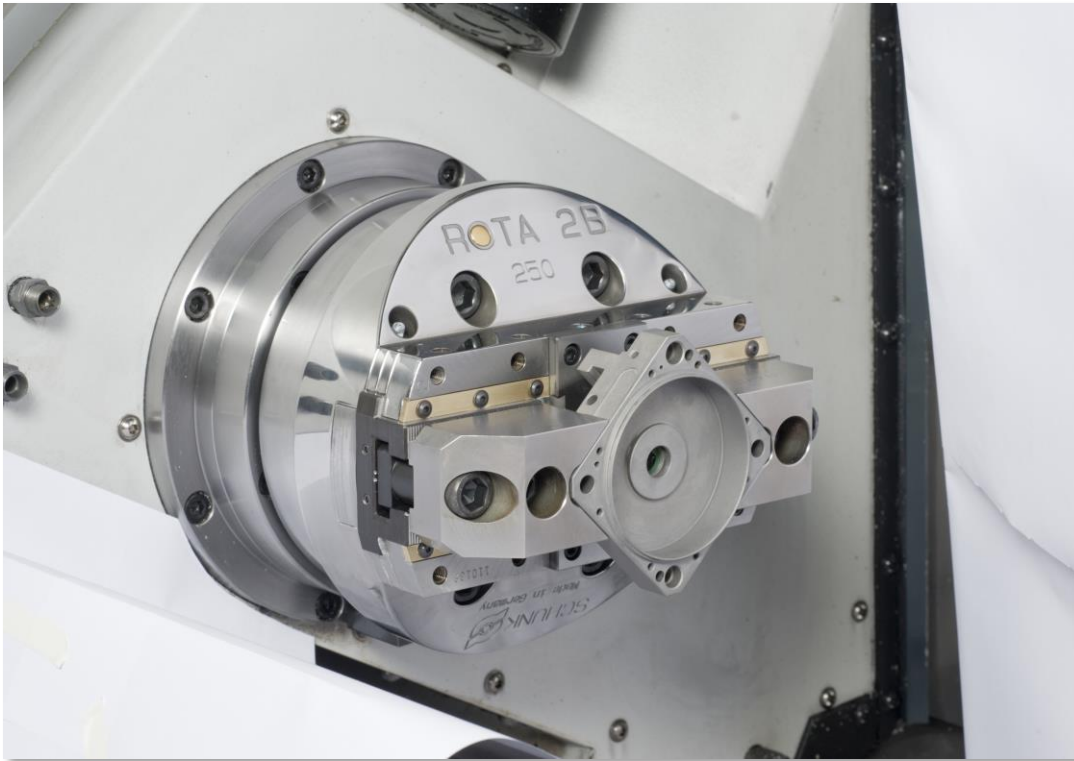


ROTA NCS 3/ NCS 6



# ROTA 2B

## Example of application



### Clamping device:

ROTA 2B 250 with prism jaws.

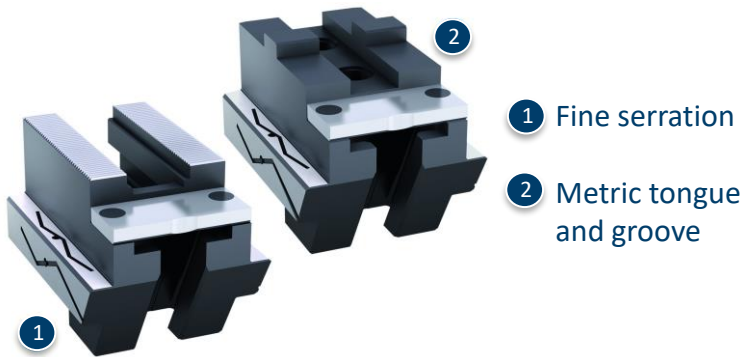
### Features/Application:

O.D. clamping of cubic workpieces with prism jaws. Good accessibility for machining with driven tools. High jaw stroke for maximum flexibility.

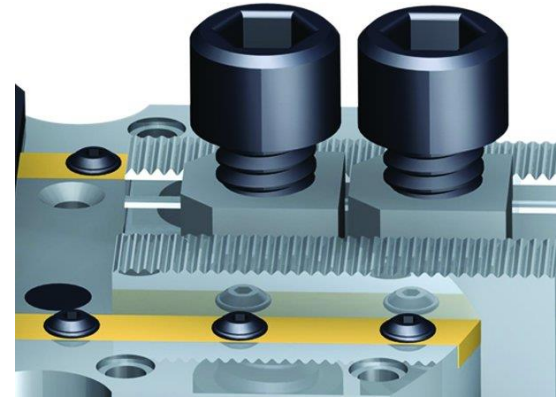


# ROTA 2B

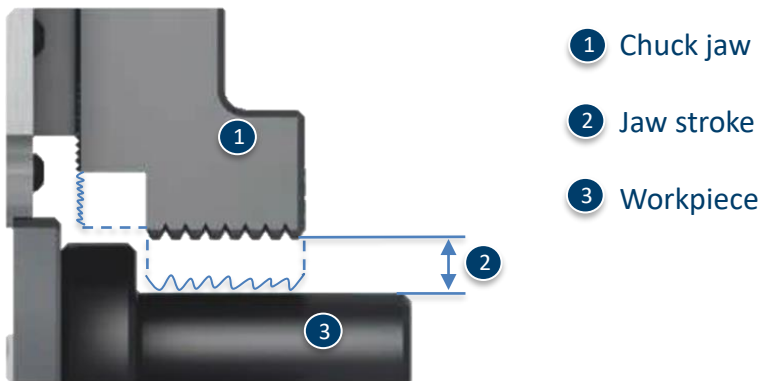
## Standardized jaw interfaces available



## Adjustable brass wiper bars



## Large jaw stroke



## Stationary clamping



# Variants ROTA 2B

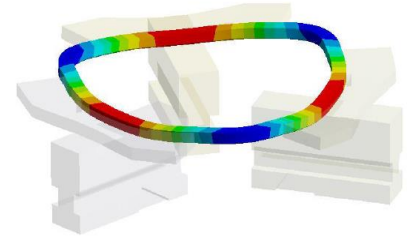
Technical data	Max. RPM [min <sup>-1</sup> ]	Max. clamping force [kN]	Max. actuating force [kN]	Stroke/jaw [mm]	Piston stroke [mm]
ROTA 2B 125	5300	26	23	10	17.5
ROTA 2B 160	4000	40	32	12.5	22
ROTA 2B 200	3200	54	45	15	26
ROTA 2B 250	2700	75	61	16	28
ROTA 2B 315	2200	85	68	18	32
ROTA 2B 400	2000	85	68	18	32

# SCHUNK Services



## Engineering

- Dimensioning of special plates designed to the manufacturing specifications
- Development of special solutions together with the customer
- FEM analysis for critical components



## Testing

- Endurance tests with all new developments
- Abrasion checking
- Measurement of accuracy



## Service

- Initial operation of customer's solution
- Inspection and maintenance
- Repairs



Superior Clamping and Gripping



© 2021 SCHUNK GmbH & Co. KG  
schunk.com