



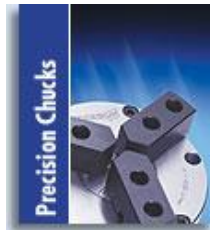
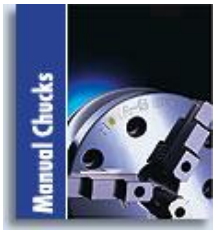
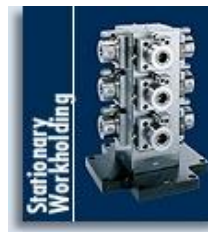
ROTA NCD

Power lathe chucks with through-hole

Superior Clamping and Gripping



Product overview



ROTA NCD



ROTA NCD

The design of the SCHUNK wedge bar power chuck ROTA NCD is based on the patented idea of high precision clamping of the smallest workpiece diameters with SCHUNK collet jaws.

At the same time it is possible to clamp large workpieces with all conventional top jaws. The continuous T-slot in the base jaws allows for the highest flexibility in positioning the top jaws.



ROTA NCD

Your advantages	Your benefits
Very large through-hole	Enables machining of large raw material diameters
Extreme rigid clamping	High precision clamping
Clamping smallest diameters	Flexibility for various clamping tasks
Base jaws with fine serration 1,5 mm x 60° and 1/16" x 90°	High flexibility within the range of the top jaws
Optimum maw support for O.D.- and I.D.- clamping due to the use of very long base jaw guidance	High clamping forces are achieved and maintained throughout the machine tool's lifetime
2 different DIN-threaded connection pitch circles in the chuck body	Fast and direct chuck assembly on all common spindle mountings
All sides of the functioning parts are ground and hardened	High run-out and repeat accuracy

ROTA NCD

- 1 Two DIN pitch circles
- 2 Mounting threads
- 3 long jaw guiding
- 4 additional ribbing of the chuck body
- 5 the sleeve is deeply implemented into the body
- 6 continuous T-slots
- 7 radial base jaw serration
- 8 wedge bar principle
- 9 the wedge bars are positioned tangentially in the chuck body

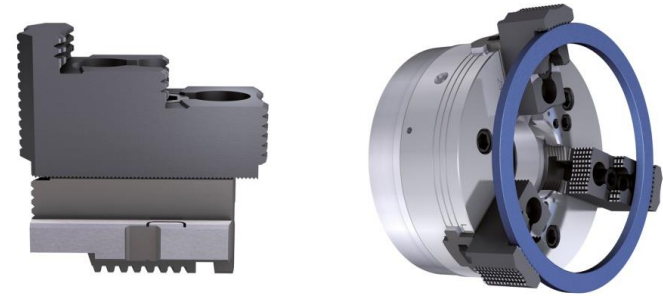


ROTA NCD

Universal for large clamping diameters

Every suitable standard jaw from the wide range of SCHUNK's standard chuck jaws can be used.

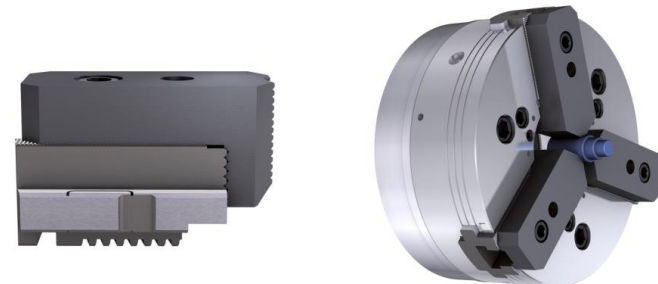
Application: O.D.-Clamping of large workpiece diameters.



Universal for bar machining

Patented standard collet jaw system from SCHUNK for bar clamping operations similar to a collet chuck

Application: Clamping of very small bar diameters by using collet jaws STD

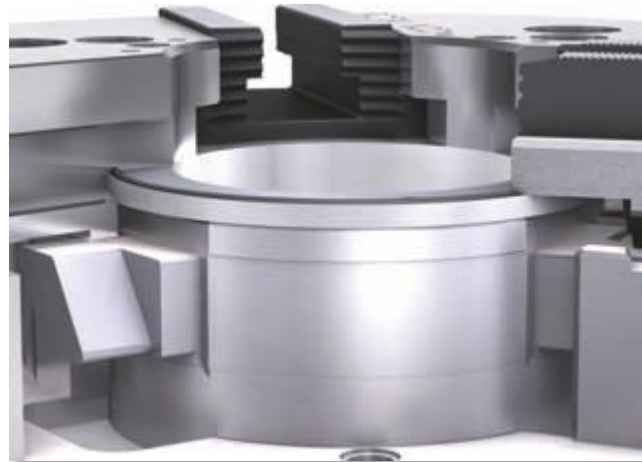


ROTA NCD

Technical highlights

Continuous T-slot

ROTA NCD chuck with a continuous T-slot in the base jaw offers a maximum clamping range of the top jaws. The additionally integrated serration in the front, together with the patented collet jaw system from SCHUNK ensures clamping of the smallest workpieces.



ROTA NCD

Technical highlights

Very large through-hole of the chuck

The very large through-hole ensures maximum use of the spindle capacity. In combination with the patented collet jaw system, the ROTA NCD is a very flexible clamping device even for bar clamping operations similar.

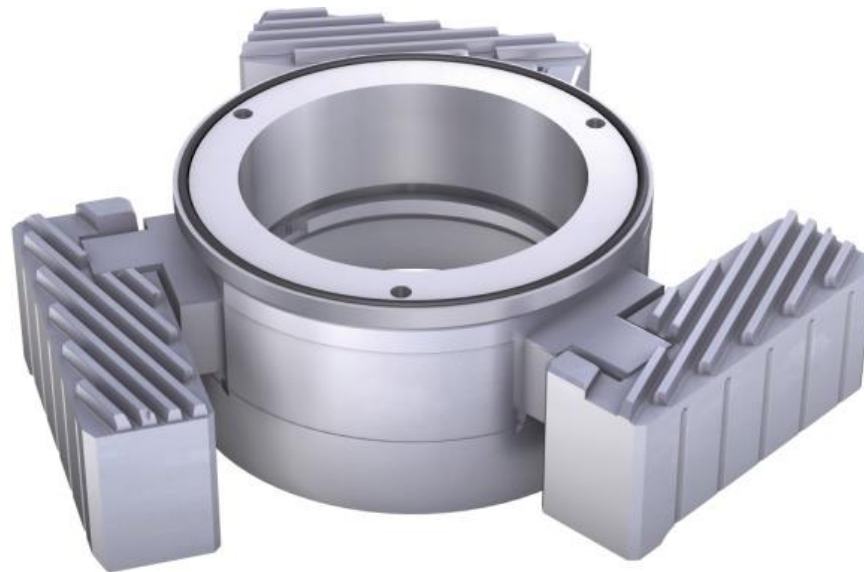


ROTA NCD

Technical highlights

Wedge bar system

Due to the force transmission via wedge bars and the low weight of the base jaws very high RPMs can be achieved with the ROTA NCD.

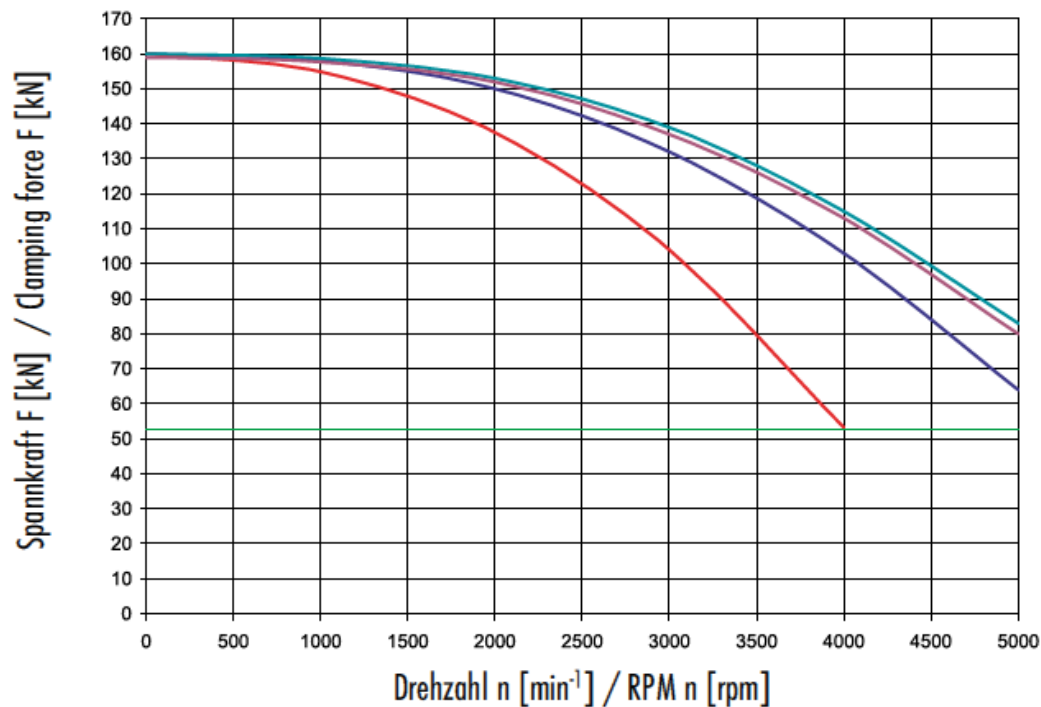


ROTA NCD

		Max. Betätigungskraft Max. actuating force	Max. Spannkraft Max. clamping force	Max. Drehzahl Max. RPM	Hub/Backe Stroke/Jaw	Kolbenhub Piston stroke	Futterbohrung Through-hole
	Seite/Page	[kN]	[kN]	[min ⁻¹]	[mm]	[mm]	[mm]
ROTA NCD 132	146	25	45	7500	3.0	14	32
ROTA NCD 165	148	35	70	7000	3.7	17	46
ROTA NCD 185	150	45	90	6000	4.5	20	54
ROTA NCD 215	152	50	110	6000	4.5	20	66
ROTA NCD 255	154	70	160	5000	5.7	25	86
ROTA NCD 315	156	90	180	4200	5.8	25	115
ROTA NCD 400	158	120	240	3200	7.5	33	165
ROTA NCD 500	160	120	240	2800	7.5	33	165
ROTA NCD 630	162	120	240	1800	7.5	33	165

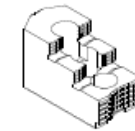
ROTA NCD

Clamping force-RPM-diagram ROTA NCD 255-86



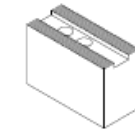
Restspannkraft/Residual clamp. force 33 %

SHB 250



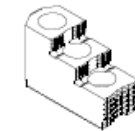
3.5 kg

SWB 250



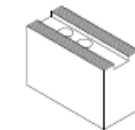
9.4 kg

SHB-J 100



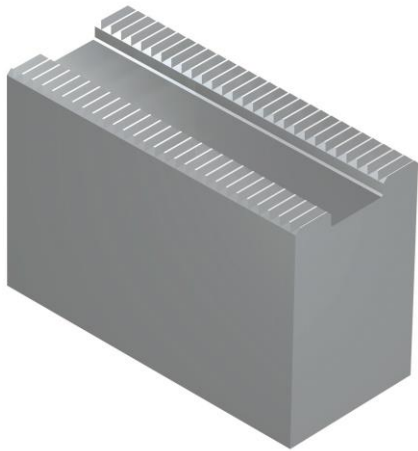
2.75 kg

KM-WB 110

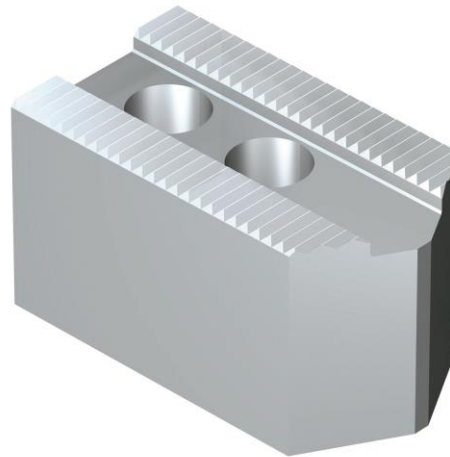


3.8 kg

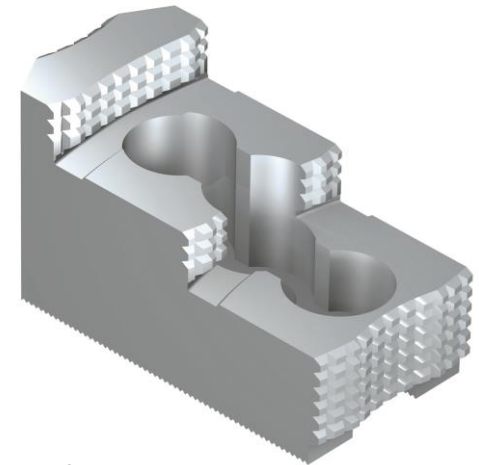
ROTA NCD



soft top jaws, SWB,
SWB-FR and SWB-AL



soft top jaws 120°,
SWB-FR and SWBL



hard to jaws,
SHB and SHB-FR

Application examples

ROTA NCD 210-66

With standard SCHUNK collet jaws

Main advantages

- utilization of large through-hole
- precision clamping by using hard SCHUNK collet jaws STD-H
- low profile collet jaws, allow machining extremely close to the chuck face



Superior Clamping and Gripping



© 2021 SCHUNK GmbH & Co. KG
schunk.com