

ROTA HSA

Compensation Chucks

Superior Clamping and Gripping



Product overview



Gripping Systems

Clamping Technology



Chuck Jaws



Stationary Workholding



Lathe Chucks



Toolholders



Hydraulic Expansion Technology



Manual Lathe Chucks



Power Lathe Chucks with Jaw Quick-change System



Power Lathe Chucks with Through-hole



Power Lathe Chucks without Through-hole



Pneumatic Power Chucks



Steady Rests



Quick-change Systems



Customized Solutions

ROTA overview

Customized Solutions

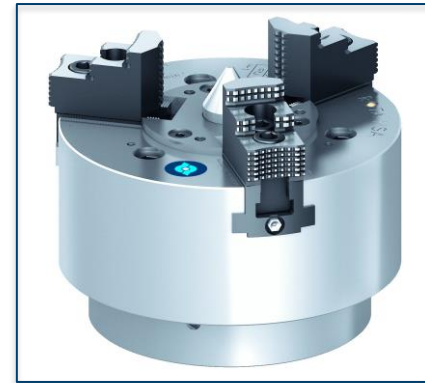
ROTA NCM



ROTA NCM-L



ROTA HSA



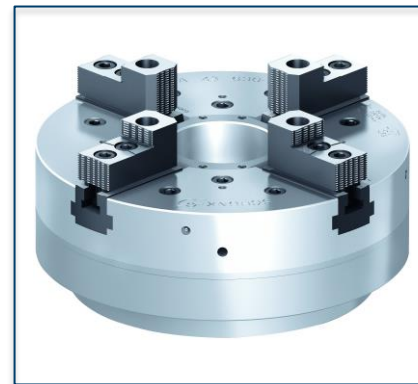
ROTA DFF



ROTA BEV



ROTA 4B

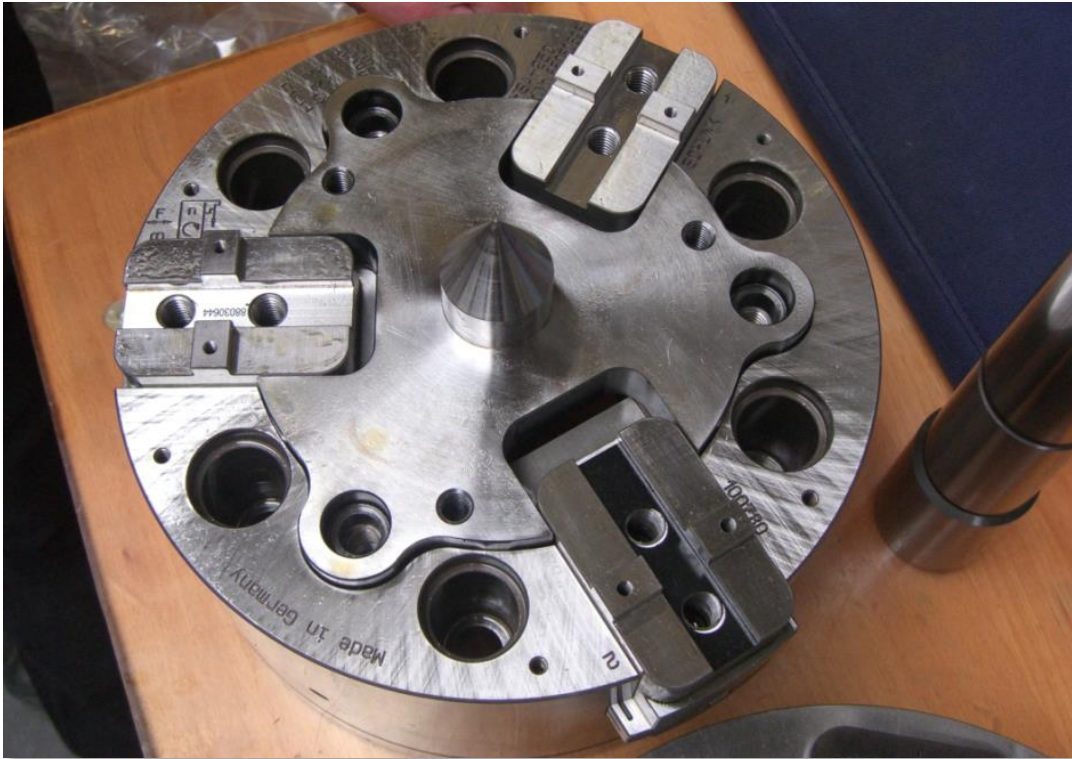


ROTA HSH



ROTA HSA

Example of application



Clamping device:

HSA 250.

Features/Application:

The workpiece is clamped between the tips. The transmission of torque is performed by three compensational clamping jaws.

ROTA HSA



- ① Center point
- ② Base jaw with fine serration
- ③ Floating piston
- ④ Hardened chuck body

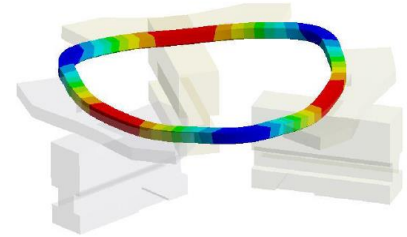
Variants ROTA HSA

Technical Data	Max. RPM [min ⁻¹]	Max. clamping force [kN]	Actuating force [kN]	Stroke/jaw [mm]	Piston stroke [mm]	Compensation in Ø [mm]
ROTA HSA 160	3600	50	25	4.8	18	3
ROTA HSA 200	3200	72	36	5.5	18	4
ROTA HSA 250	3000	110	46	6.5	25	4
ROTA HSA 315	2500	120	50	7.5	25	5
ROTA HSA 400	1800	150	61	9	30	5
ROTA HSA 500	1000	250	125	12	40	8

SCHUNK Services

Engineering

- Dimensioning of special plates designed to the manufacturing specifications
- Development of special solutions together with the customer
- FEM analysis for critical components



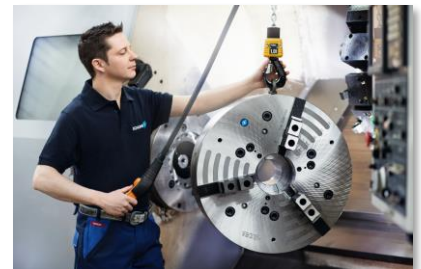
Testing

- Endurance tests with all new developments
- Abrasion checking
- Measurement of accuracy



Service

- Initial operation of customer's solution
- Inspection and maintenance
- Repairs



Superior Clamping and Gripping



© 2021 SCHUNK GmbH & Co. KG
schunk.com