



ROTA NCM

Hybrid Chucks

Superior Clamping and Gripping



Product overview



Gripping Systems

Clamping Technology



Chuck Jaws



Stationary Workholding



Lathe Chucks



Toolholders



Hydraulic Expansion Technology



Manual Lathe Chucks



Power Lathe Chucks with Jaw Quick-change System



Power Lathe Chucks with Through-hole



Power Lathe Chucks without Through-hole



Pneumatic Power Chucks



Steady Rests



Quick-change Systems



Customized Solutions

ROTA overview

Customized Solutions

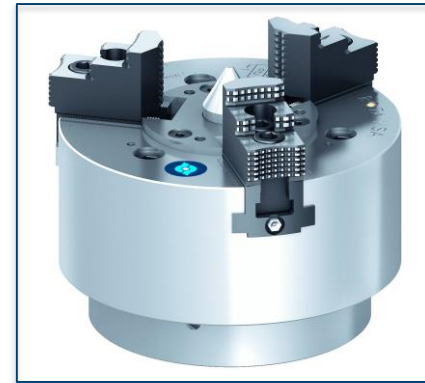
ROTA NCM



ROTA NCM-L



ROTA HSA



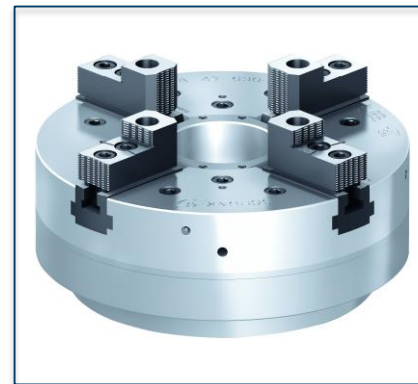
ROTA DFF



ROTA BEV



ROTA 4B

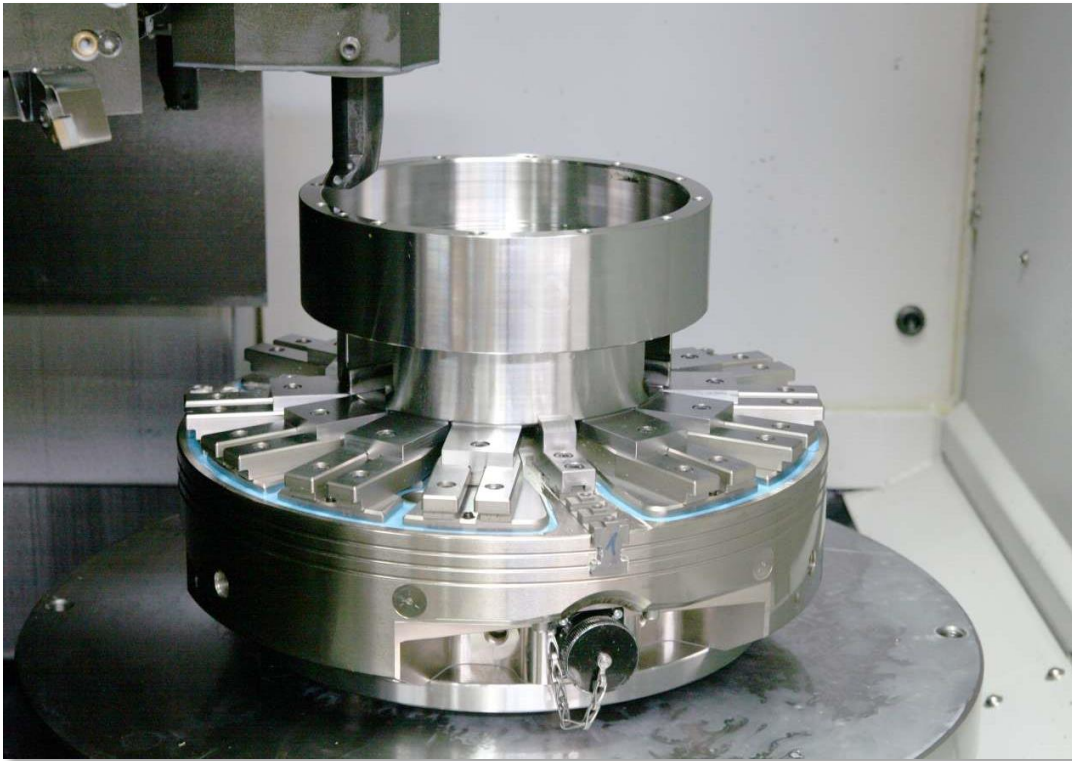


ROTA HSH



ROTA NCM

Example of application



Clamping device:

Hybrid chuck ROTA NCM 400.

Features/Application:

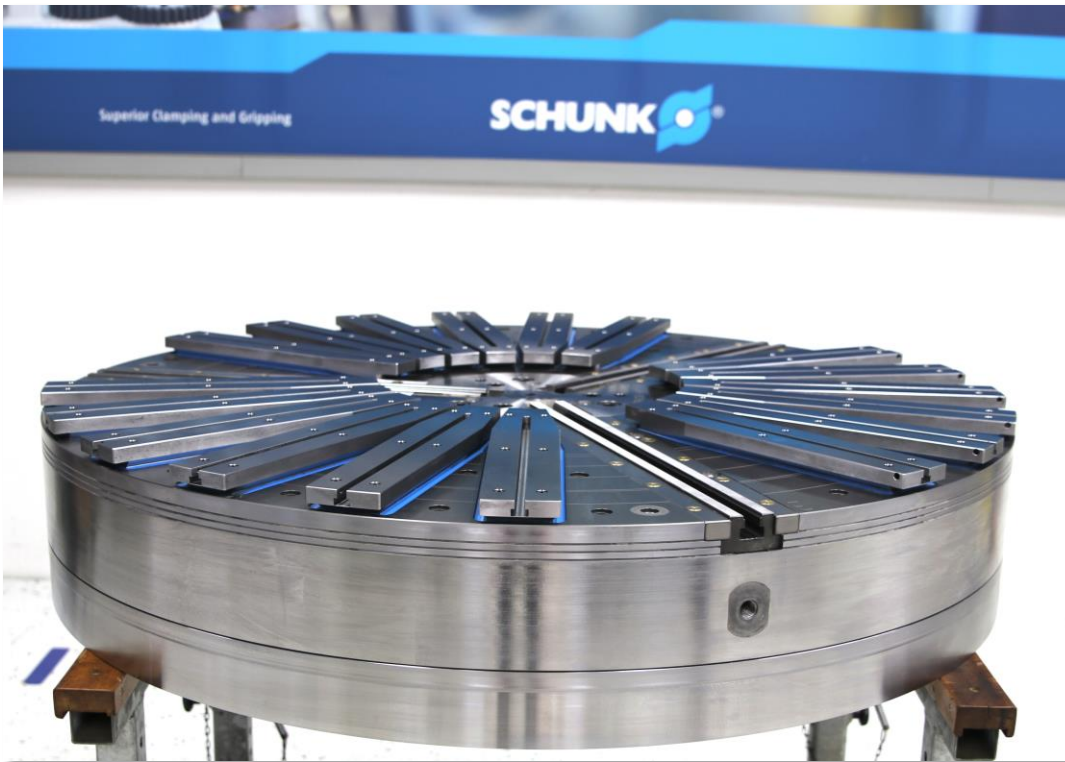
Three centering jaws center the workpiece fully automated within seconds.

Workpiece: pneumatic cylinder

Processing: finishing of piston surface.

ROTA NCM

Example of application



Clamping device:

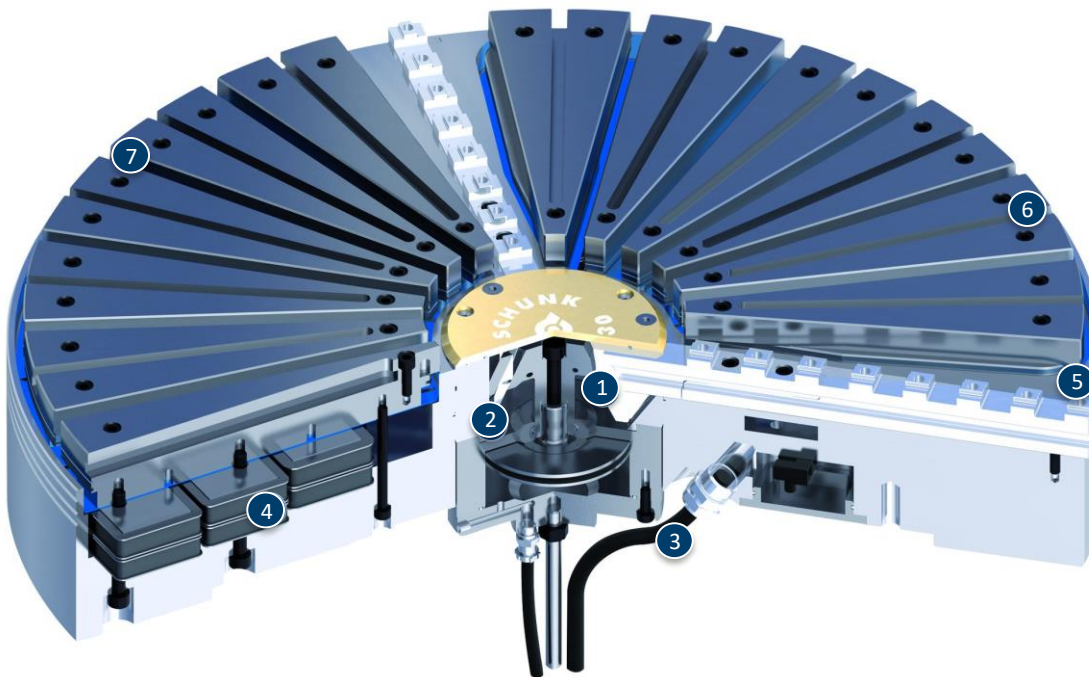
Hybrid chuck ROTA NCM 1300.

Features/Application:

Three centering jaws center the workpiece fully automated within seconds.

Centering chuck ROTA NCO.

ROTA NCM



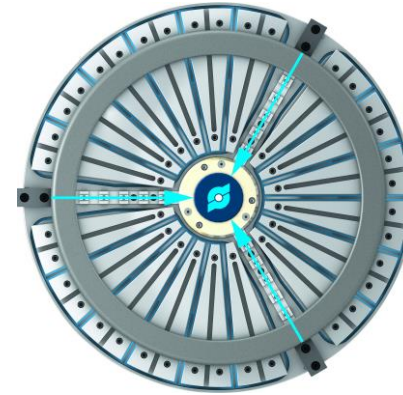
- ① Encapsuled centering chuck
- ② Integrated actuation cylinder
- ③ Power supply
- ④ Magnet system
- ⑤ Base jaws
- ⑥ Overwound/exchangeable pole shoes
- ⑦ T-slots

ROTA NCM

Secure hold due to permanent magnets



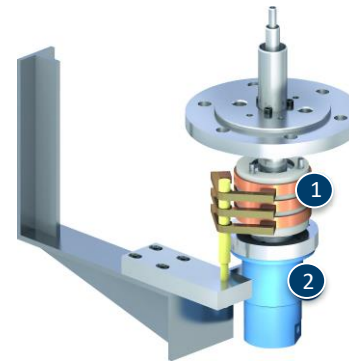
Centered in seconds



Control unit (internal)



Energy transmission



- 1 Slip ring
- 2 2-fold rotary distributor

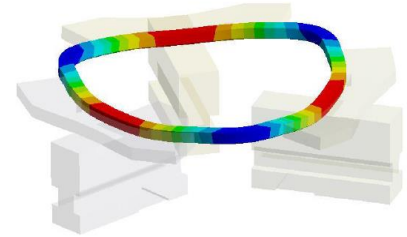
Variants ROTA NCM

Technical Data	Centering force [kN]	Magnet clamping range [mm]	Number of centering jaws [Nm]	Height [mm]
ROTA NCM 400	10	150-400	3	120
ROTA NCM 630	20	200-630	3	120
ROTA NCM 800	20	250-800	3	170
ROTA NCM 1000	30	250-1000	3	170
ROTA NCM 1400	30	300-1400	3/6	155
ROTA NCM 2000	50	500-2000	3/6	190
ROTA NCM 2500	80	500-2500	3/6	190

SCHUNK Services

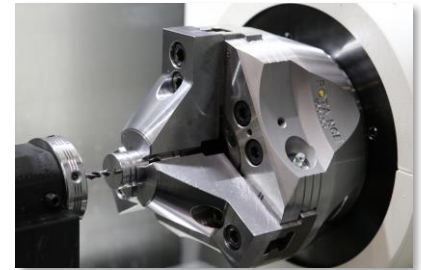
Engineering

- Dimensioning of special plates designed to the manufacturing specifications
- Development of special solutions together with the customer
- FEM analysis for critical components



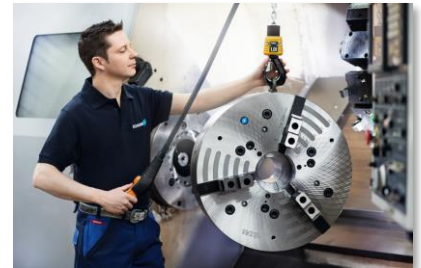
Testing

- Endurance tests with all new developments
- Abrasion checking
- Measurement of accuracy



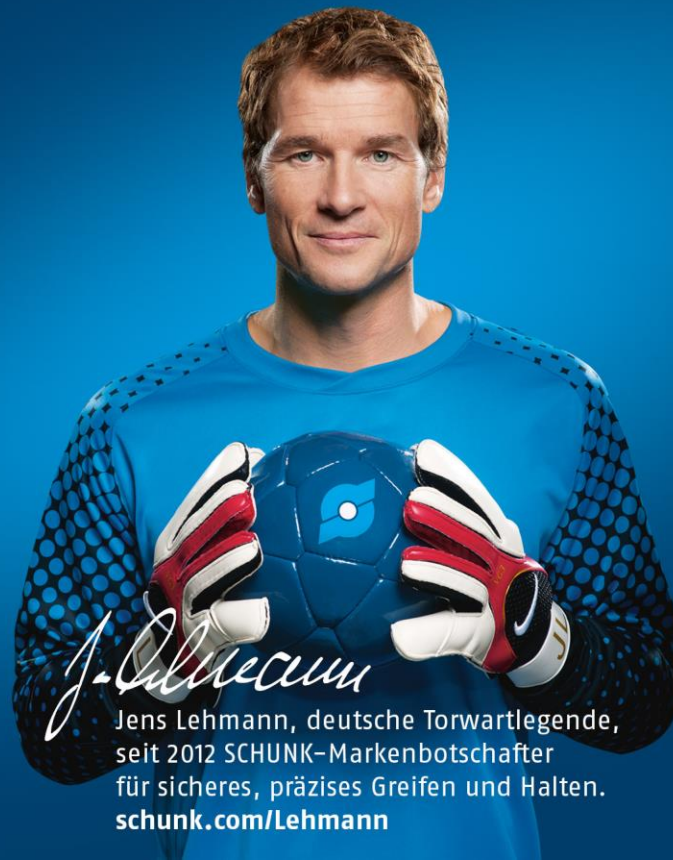
Service

- Initial operation of customer's solution
- Inspection and maintenance
- Repairs



Superior Clamping and Gripping

SCHUNK ®



J. Lehmann

Jens Lehmann, deutsche Torwartlegende,
seit 2012 SCHUNK-Markenbotschafter
für sicheres, präzises Greifen und Halten.
schunk.com/Lehmann

