



# ROTA DFF

Rotary Finger Chucks

Superior Clamping and Gripping



# Product overview



## Gripping Systems

## Clamping Technology



Chuck Jaws



Stationary Workholding



Lathe Chucks



Toolholders



Hydraulic Expansion Technology



Manual Lathe Chucks



Power Lathe Chucks with Jaw Quick-change System



Power Lathe Chucks with Through-hole



Power Lathe Chucks without Through-hole



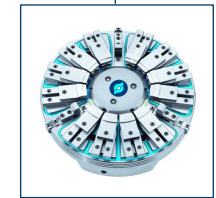
Pneumatic Power Chucks



Steady Rests



Quick-change Systems



Customized Solutions

# ROTA overview

## Customized Solutions

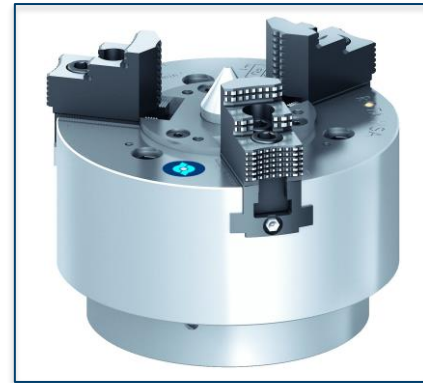
ROTA NCM



ROTA NCM-L



ROTA HSA



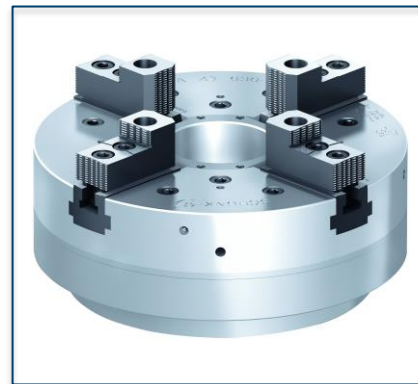
ROTA DFF



ROTA BEV



ROTA 4B

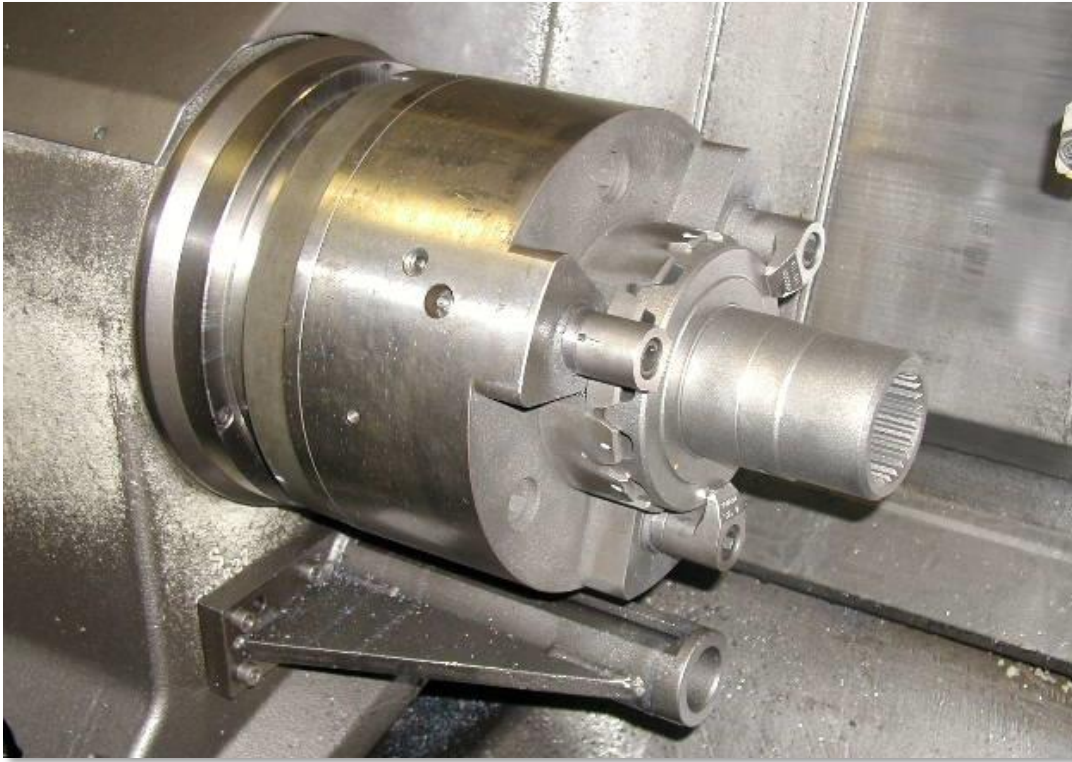


ROTA HSH



# ROTA DFF

## Example of application



### Clamping device:

DFF 250.

### Features/Application:

Centering and back stop of the workpiece is done by a negative interlock that is screwed on the chuck face.

The workpiece is axially clamped via swiveling fingers.

# ROTA DFF



- ① Workpiece centering
- ② Clamping finger
- ③ Hardened chuck body
- ④ Piston
- ⑤ Workpiece stop

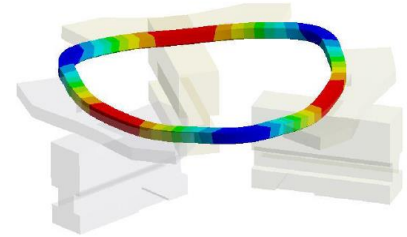
# Variants ROTA DFF

Technical Data	Max. RPM [min <sup>-1</sup> ]	Max. clamping force [kN]	Actuating force [kN]	Piston stroke [mm]
ROTA DFF 140	6000	20	20	26
ROTA DFF 180	1800	15	15	15
ROTA DFF 260	2200	30	30	25
ROTA DFF 400	2200	60	60	25
ROTA DFF 500	2200	30	30	40

# SCHUNK Services

## Engineering

- Dimensioning of special plates designed to the manufacturing specifications
- Development of special solutions together with the customer
- FEM analysis for critical components



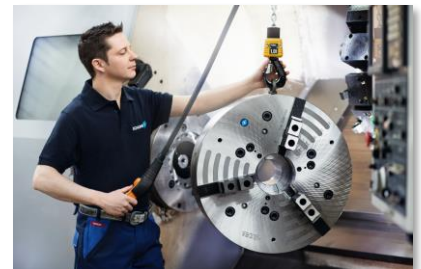
## Testing

- Endurance tests with all new developments
- Abrasion checking
- Measurement of accuracy



## Service

- Initial operation of customer's solution
- Inspection and maintenance
- Repairs



Superior Clamping and Gripping



© 2021 SCHUNK GmbH & Co. KG  
schunk.com