

ROTA BEV

Power Lathe Chucks with individual Jaw Adjustment

Superior Clamping and Gripping



Product overview



Gripping Systems

Clamping Technology



Chuck Jaws



Stationary Workholding



Lathe Chucks



Toolholders



Hydraulic Expansion Technology



Manual Lathe Chucks



Power Lathe Chucks with Jaw Quick-change System



Power Lathe Chucks with Through-hole



Power Lathe Chucks without Through-hole



Pneumatic Power Chucks



Steady Rests



Quick-change Systems



Customized Solutions

ROTA overview

Customized Solutions

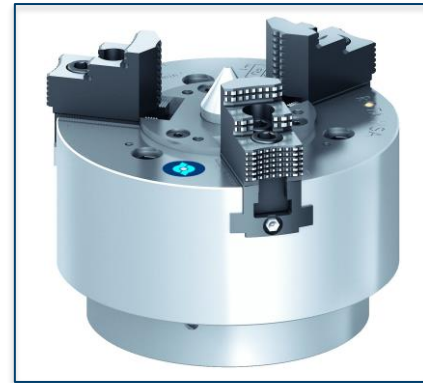
ROTA NCM



ROTA NCM-L



ROTA HSA



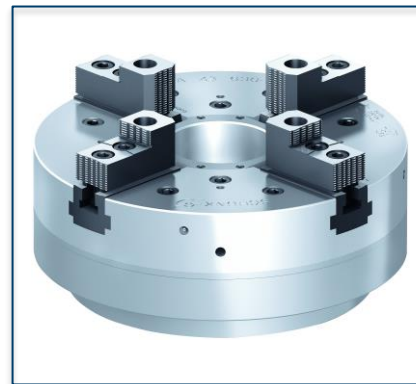
ROTA DFF



ROTA BEV



ROTA 4B



ROTA HSH



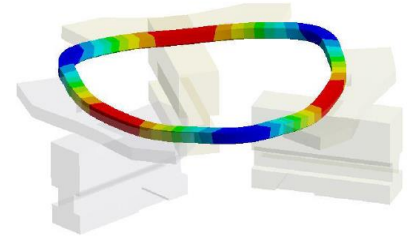
Variants ROTA BEV

Technical Data	Max. RPM [min ⁻¹]	Max. clamping force [kN]	Actuating force [kN]	Stroke/jaw [mm]	Piston stroke [mm]	Individual adjustment per jaw [mm]
ROTA BEV 500	1000	120	70	10.5	40	8
ROTA BEV 630	600	160	90	10.5	40	12
ROTA BEV 800	700	300	133	16	50	25
ROTA BEV 1000	500	330	150	16	50	25

SCHUNK Services

Engineering

- Dimensioning of special plates designed to the manufacturing specifications
- Development of special solutions together with the customer
- FEM analysis for critical components



Testing

- Endurance tests with all new developments
- Abrasion checking
- Measurement of accuracy



Service

- Initial operation of customer's solution
- Inspection and maintenance
- Repairs



Superior Clamping and Gripping



© 2021 SCHUNK GmbH & Co. KG
schunk.com