

# ROTA 4B

4-jaw Power Chuck

Superior Clamping and Gripping



# Product overview



## Gripping Systems

## Clamping Technology



Chuck Jaws



Stationary Workholding



Lathe Chucks



Toolholders



Hydraulic Expansion Technology



Manual Lathe Chucks



Power Lathe Chucks with Jaw Quick-change System



Power Lathe Chucks with Through-hole



Power Lathe Chucks without Through-hole



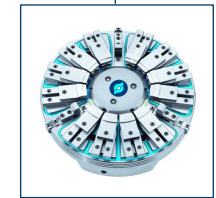
Pneumatic Power Chucks



Steady Rests



Quick-change Systems



Customized Solutions

# ROTA overview

## Customized Solutions

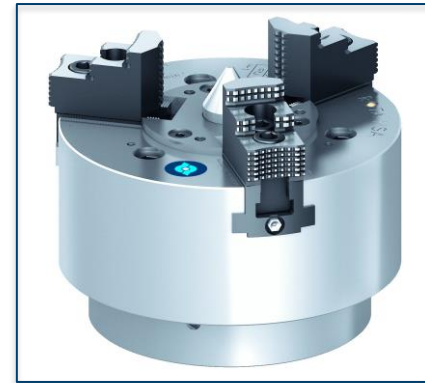
ROTA NCM



ROTA NCM-L



ROTA HSA



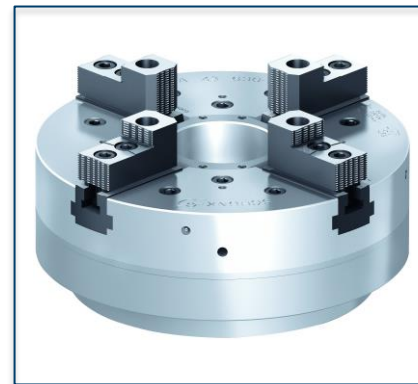
ROTA DFF



ROTA BEV



ROTA 4B

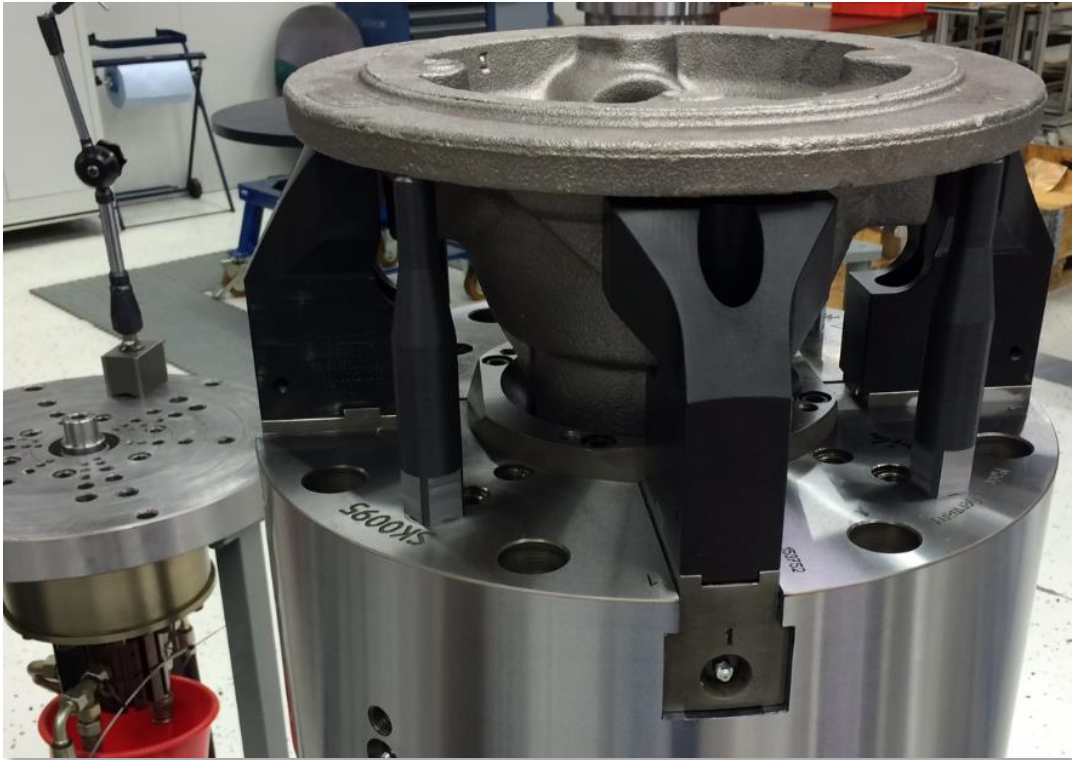


ROTA HSH



# ROTA 4B

## Example of application



### Clamping device:

4-jaw chuck D 400 (2+2)

### Features/Application:

2+2 principle of function:

Jaw pair I ( $0^\circ + 180^\circ$ ) and jaw pair II ( $90^\circ + 270^\circ$ ) clamp the workpiece centrally. The two jaw pairs are connected via equalizer.

Workpiece: transmission case.

# ROTA 4B



- ① Hardened chuck body
- ② Hardened base jaws
- ③ Center sleeve
- ④ Base jaw with fine serration

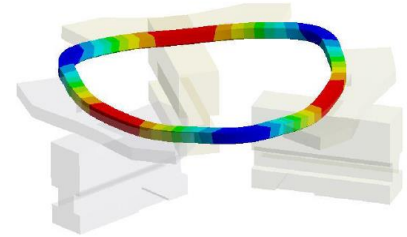
# Variants ROTA 4B

Technical Data	Max. RPM [min <sup>-1</sup> ]	Max. clamping force [kN]	Actuating force [kN]	Stroke/jaw [mm]	Piston stroke [mm]
ROTA 4B 250	3000	137	57	5.3	20
ROTA 4B 315	2400	150	62	5.3	25
ROTA 4B 400	1800	187	77	8	30
ROTA 4B 500	1500	200	75	8	30
ROTA 4B 630	1000	200	84	11.2	42
ROTA 4B 800	800	370	120	11.2	42

# SCHUNK Services

## Engineering

- Dimensioning of special plates designed to the manufacturing specifications
- Development of special solutions together with the customer
- FEM analysis for critical components



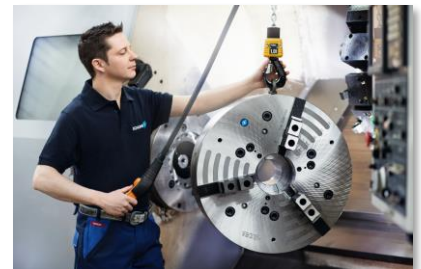
## Testing

- Endurance tests with all new developments
- Abrasion checking
- Measurement of accuracy



## Service

- Initial operation of customer's solution
- Inspection and maintenance
- Repairs



Superior Clamping and Gripping



© 2021 SCHUNK GmbH & Co. KG  
[schunk.com](http://schunk.com)