



ROTA HSH

Lever Chucks

Superior Clamping and Gripping



Product overview



Gripping Systems

Clamping Technology



Chuck Jaws



Stationary Workholding



Lathe Chucks



Toolholders



Hydraulic Expansion Technology



Manual Lathe Chucks



Power Lathe Chucks with Jaw Quick-change System



Power Lathe Chucks with Through-hole



Power Lathe Chucks without Through-hole



Pneumatic Power Chucks



Steady Rests



Quick-change Systems



Customized Solutions

ROTA Overview

Customized Solutions

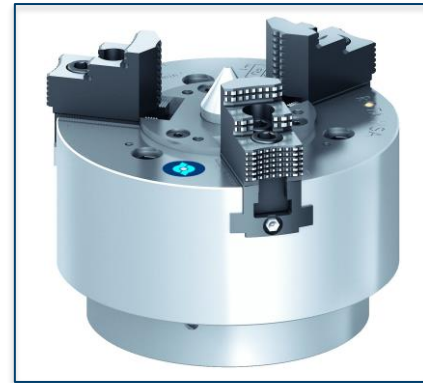
ROTA NCM



ROTA NCM-L



ROTA HSA



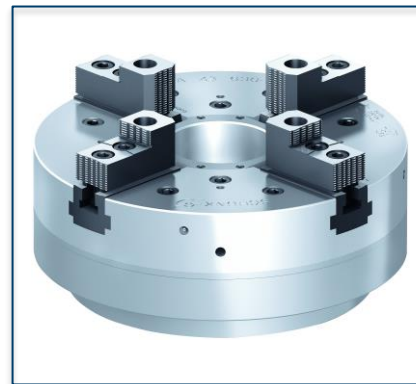
ROTA DFF



ROTA BEV



ROTA 4B



ROTA HSH



ROTA HSH

Example of application



Clamping device:

HSH 350

Features/Application:

Lever chuck with highest stroke at smallest chuck diameter.

e.g. HSH 350 (O.D.-Diameter 350) with 30 mm stroke/jaw.

Workpiece: drilling head.

ROTA HSH



- 1 Hardened chuck body
- 2 Base jaw with long guidance
- 3 Base jaw with fine serration
- 4 Angle lever for force transmission
- 5 Piston

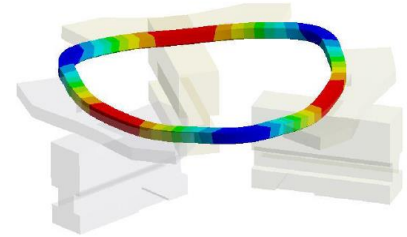
Variants ROTA HSH

Technical Data	Max. RPM [min ⁻¹]	Max. clamping force [kN]	Actuating force [kN]	Stroke/jaw [mm]	Piston stroke [mm]
ROTA HSH 120	5500	25	18	9.5	16
ROTA HSH 140	4000	25	20	9.5	21
ROTA HSH 280	2000	50	76	20	19
ROTA HSH 315	2800	76	58	23	32
ROTA HSH 350	2000	70	80	30	35

SCHUNK Services

Engineering

- Dimensioning of special plates designed to the manufacturing specifications
- Development of special solutions together with the customer
- FEM analysis for critical components



Testing

- Endurance tests with all new developments
- Abrasion checking
- Measurement of accuracy



Service

- Initial operation of customer's solution
- Inspection and maintenance
- Repairs



Superior Clamping and Gripping



© 2021 SCHUNK GmbH & Co. KG
schunk.com