

30 Years

SCHUNK

Grippers  
1983 - 2013



# KONTEC KSM

Multi Clamping Visas

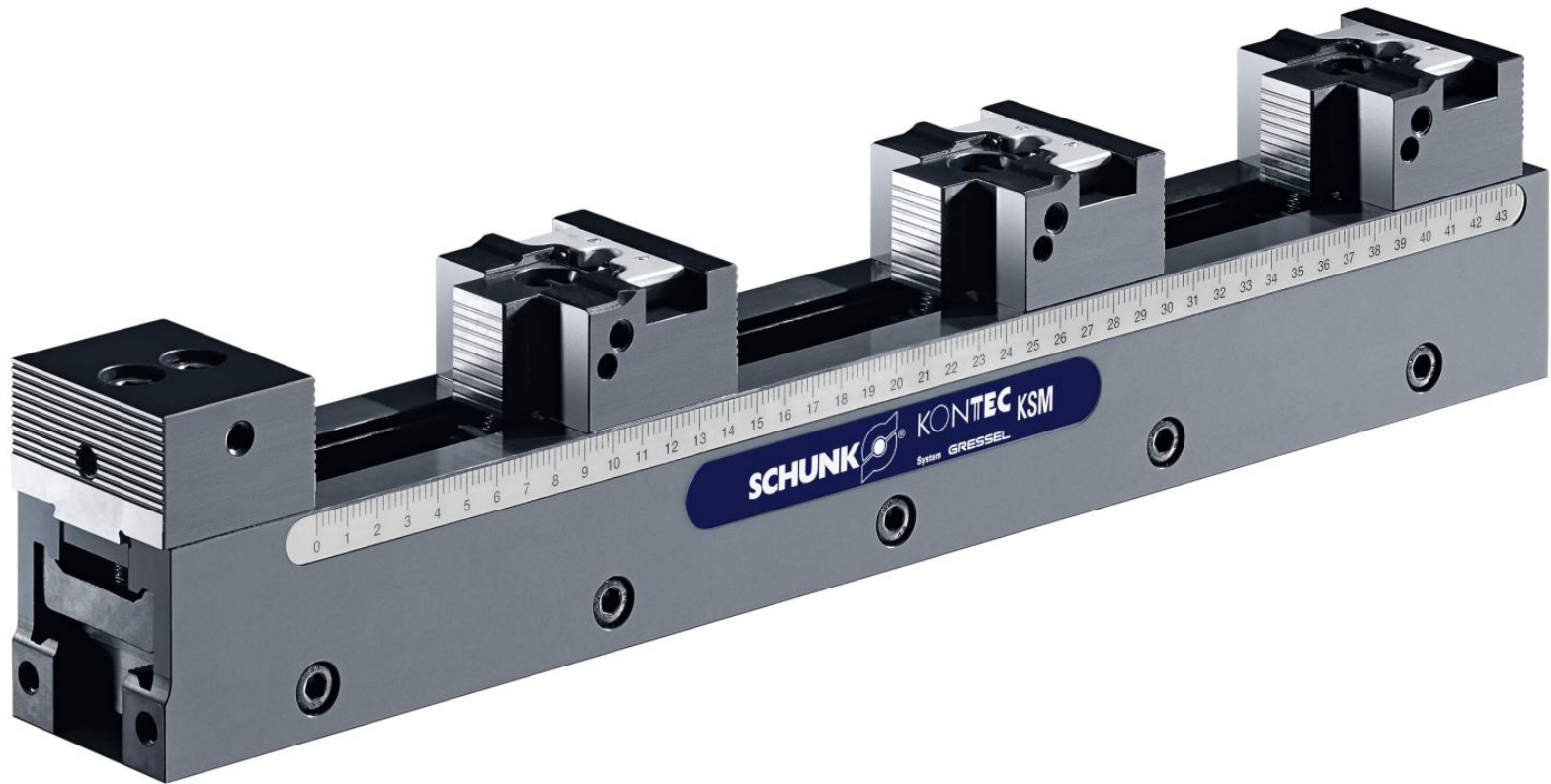
Superior Clamping and Gripping



# KONTEC KSM



# KONTEC KSM



# KONTEC KSM



## Multi clamping vise with minimal space requirements

### Features

- two sizes: 65 or 90 mm jaw width, available in five and four standard lengths respectively
- several clamping rails can be combined
- quick jaw adjustment by vertically arranged index tothing
- clamping jaws with integrated pull-down effect
- clamping forces up to 25 kN (for clamping of several workpieces)
- clamping forces up to 50 kN (when clamping one workpiece)
- comprehensive range of jaws

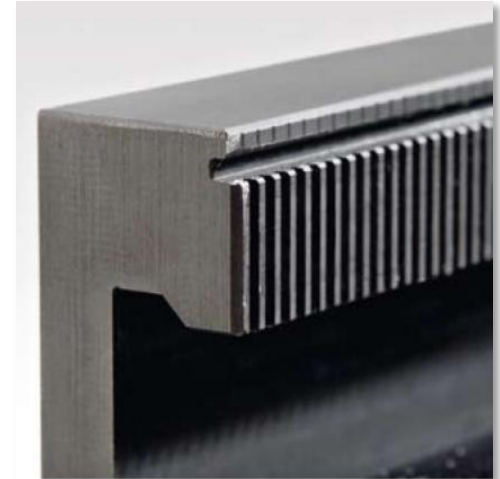
## Technical highlights

### Vertical serration

- with unique benefits on inside of side rails
- workpiece supported on smooth surface
- less time spent cleaning
- protection against damage and wear
- block clamping of adjustable jaws

### Ergonomic adjustable jaws

- handle strip with click-in retention
- jaws with pull-down function
- jaws with grip profile
- reflecting clamping possible by turning the indexing nut
- compatible with all clamping rails



## Technical highlights

### Clamping of plates and large parts

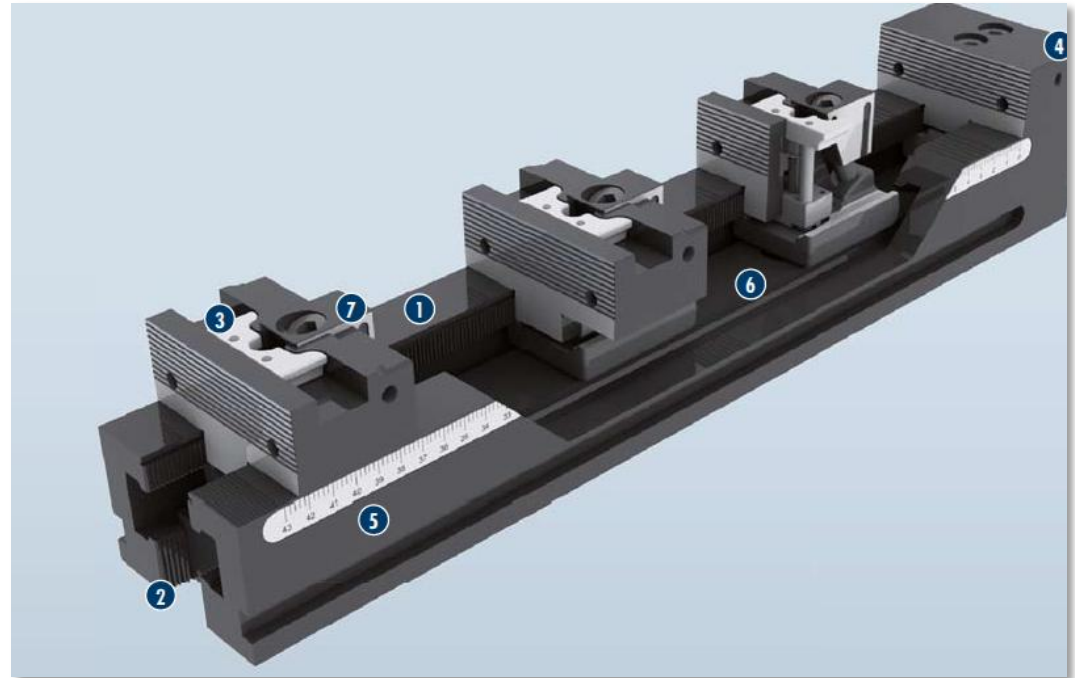
- increased clamping forces of up to 50 kN for individual clamping
- construction kit system enables coverage of large clamping ranges
- machine table better /fully exploited
- quick retrofit
- clamping rails extendable due to compressive indexing



# KONTEC KSM



1. clamping area without serration
2. vertical serration
3. adjustable jaw
4. fixed jaw
5. clamping rail
6. clamping
7. modular system



# KOTNEC KSM



## Function

The movable jaw can be positioned anywhere by means of quick jaw adjustment. Clamping is achieved with the movable jaw via a closed wedge hook system that clamps down and toward the workpiece. The back of the adjusting jaw and the fixed jaw serve as the workpiece stop.

## Modular system



KSM base set 65 mm



KSM base set 90 mm

# KONTEC KSM



**Base rail KSM 65**

**Scope of delivery**

Base rails with precision ground serrations



**Base rail KSM 90**

**Scope of delivery**

Base rails with precision ground serrations

# KONTEC KSM

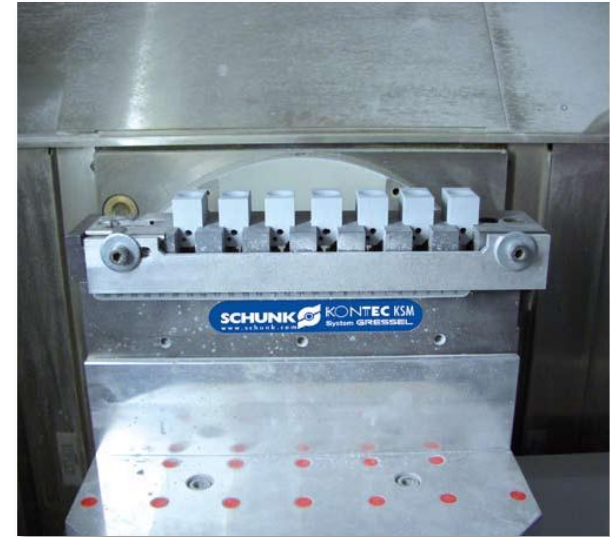


## Application examples



### KSM 90-650

Large workpieces of many different types are clamped in three fully flexible KSMs. The quick grid adjustment enables fast conversion of clamping vises on various plate sizes. The large range of standard jaws provide a wide range of clamping options.



### KSM 65-320

Altogether seven small workpieces are clamped securely in this clamping block. KSM enables a high degree of parts compactness, particularly for clamping of unfinished parts.

# KONTEC KSM

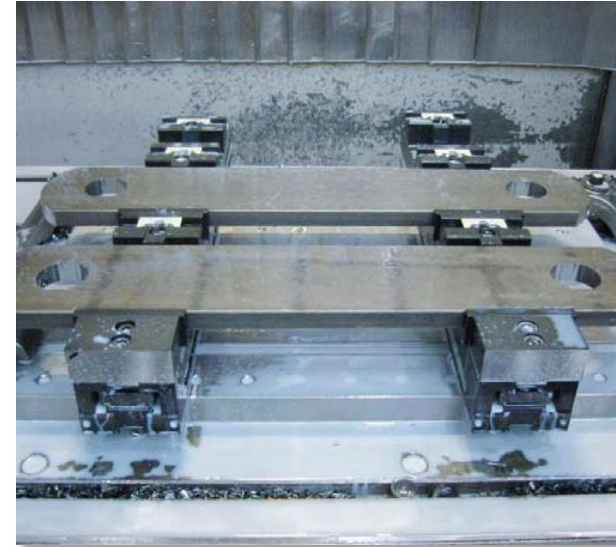


## Application examples



### KSM 90-650 double

Two KSMs are installed behind one another for this clamping, which increases the clamping length to almost 1000 mm. This enables various-sized plates to be clamped quickly and simply. As a result, the full size of the machine table is optimally used.



### KSM 90-500

KSM is available in various lengths as a single, double or multiple-clamping system, allowing it to be optimally adjusted to the existing machine table and ensures that no space is wasted.

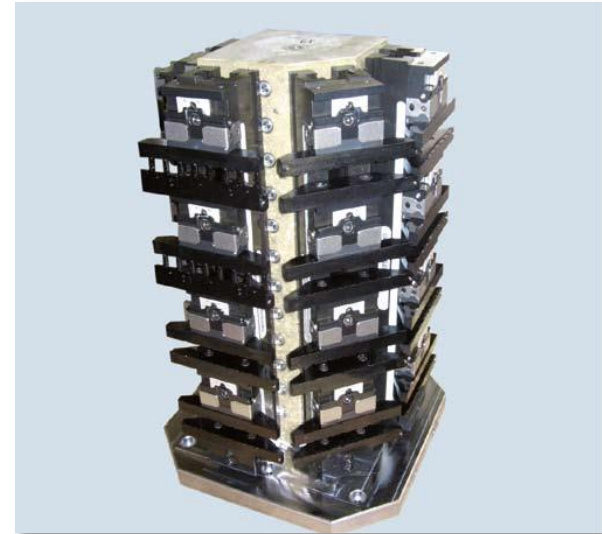
# KONTEC KSM

## Application examples



### KSM 90-500

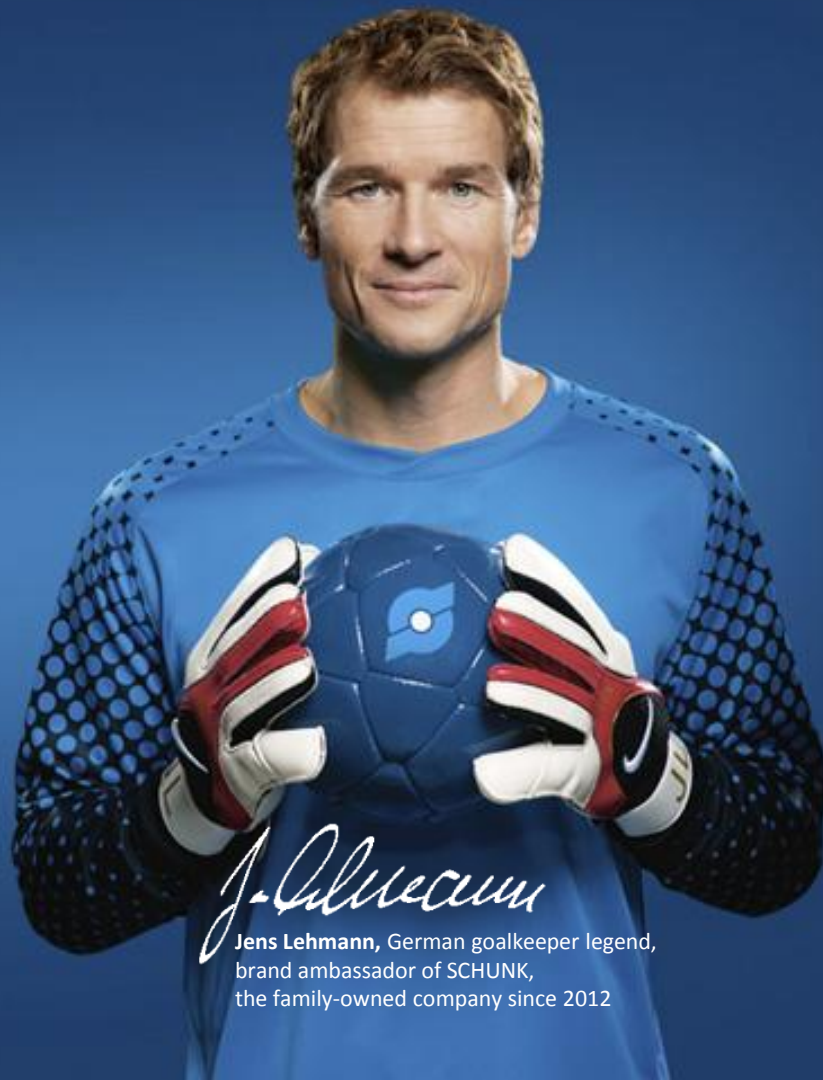
Four KSM clamping blocks are assembled on a clamping tower with a 400 mm sized pallet. This enables 16 workpieces to be loaded and machined in turn, which significantly increased the machine's efficiency.



### KSM 65-500

Five clamping blocks are mounted on a special-geometry tombstone. This enables 20 workpieces to be loaded and machined in turn.

Superior Clamping and Gripping



*J. Lehmann*

Jens Lehmann, German goalkeeper legend,  
brand ambassador of SCHUNK,  
the family-owned company since 2012



[www.schunk.com](http://www.schunk.com)