



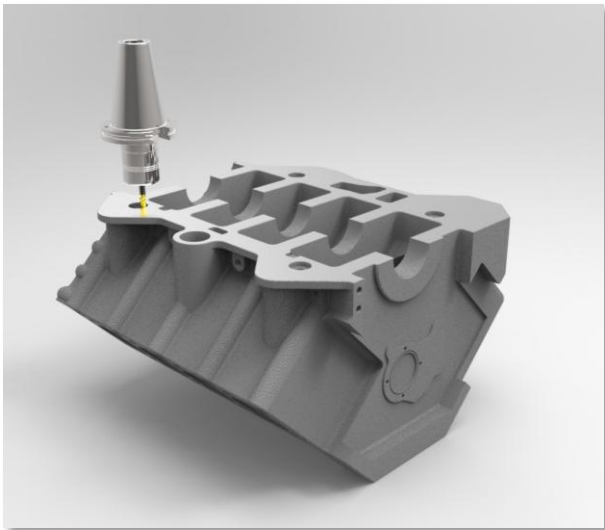
Superior Clamping and Gripping

Workpiece direct clamping

VERO-S quick-change pallet system

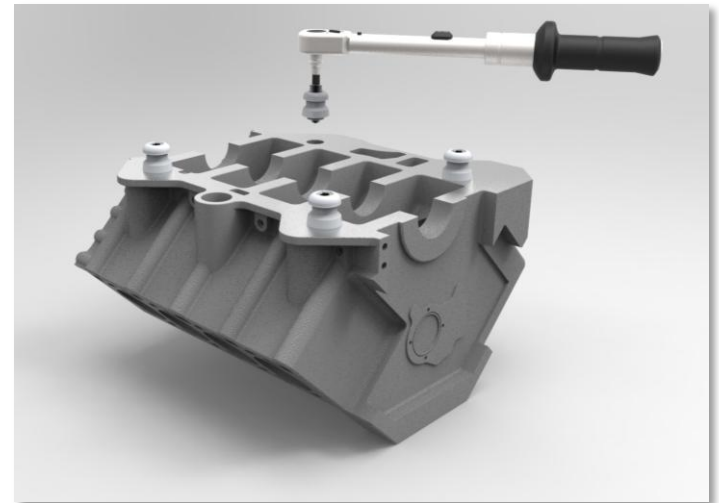
SCHUNK VERO-S

Direct clamping – clamp complex workpieces easily and safely



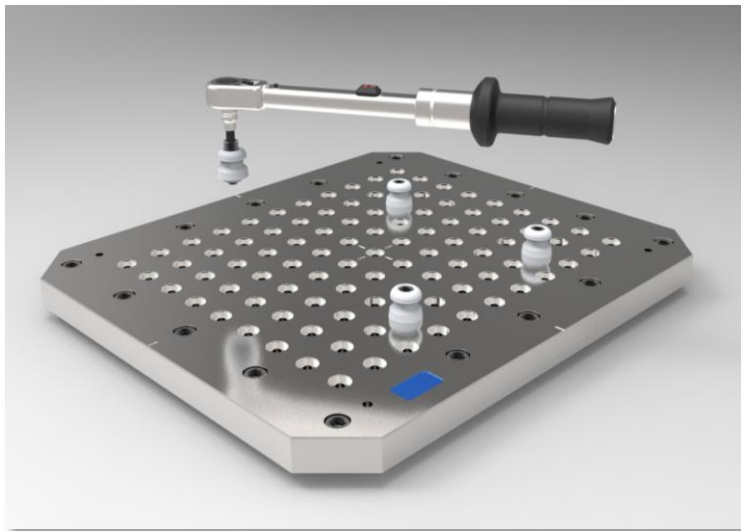
1. Workpiece preparation: Provide form fit and tapped bore for the clamping pin.

2. Mount the VERO-S clamping pin in the workpiece to be processed.



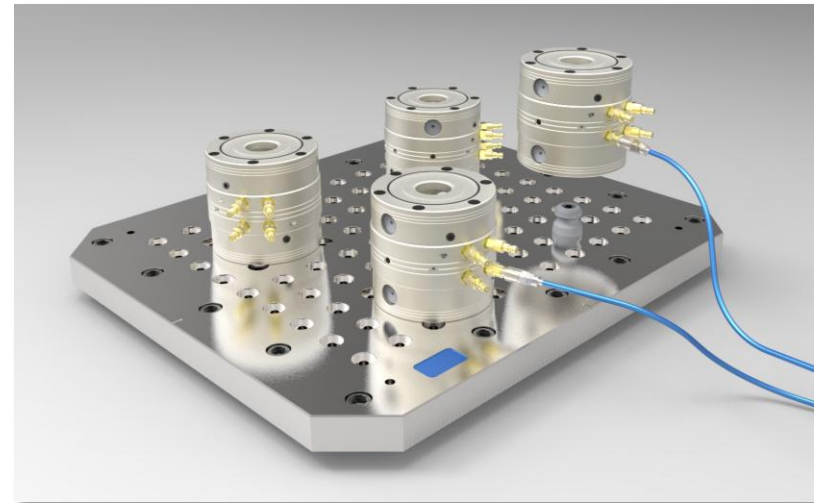
SCHUNK VERO-S

Direct clamping – clamp complex workpieces easily and safely



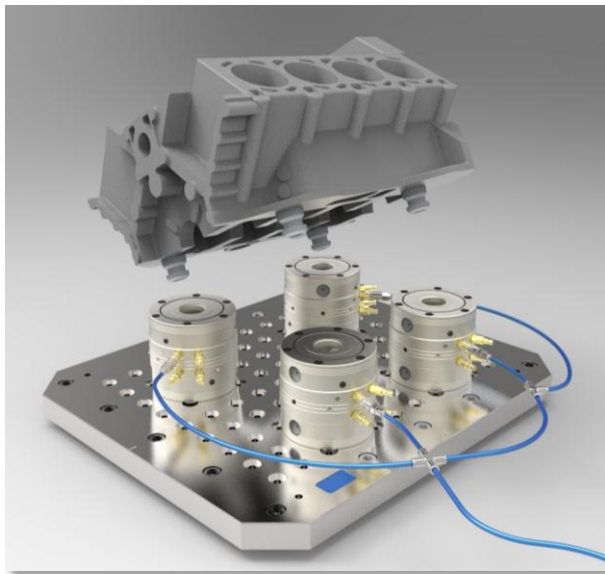
3. Screw the VERO-S clamping pin into the workpiece direct clamping station.
(use only type A clamping pin.)

4. Fix the workpiece direct clamping modules on the workpiece direct clamping station.



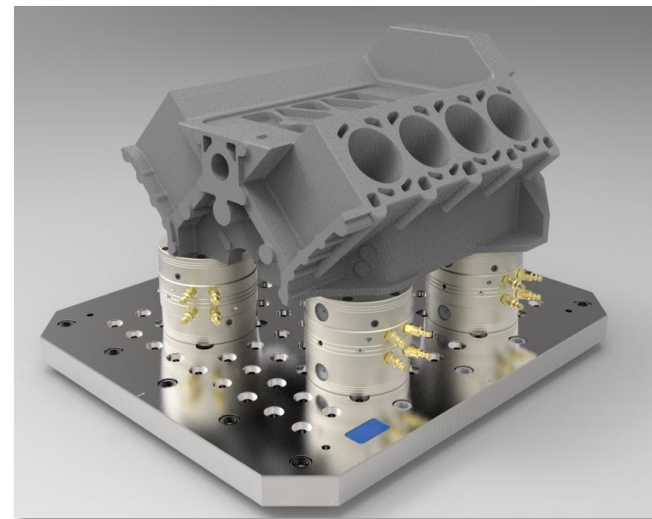
SCHUNK VERO-S

Direct clamping – clamp complex workpieces easily and safely



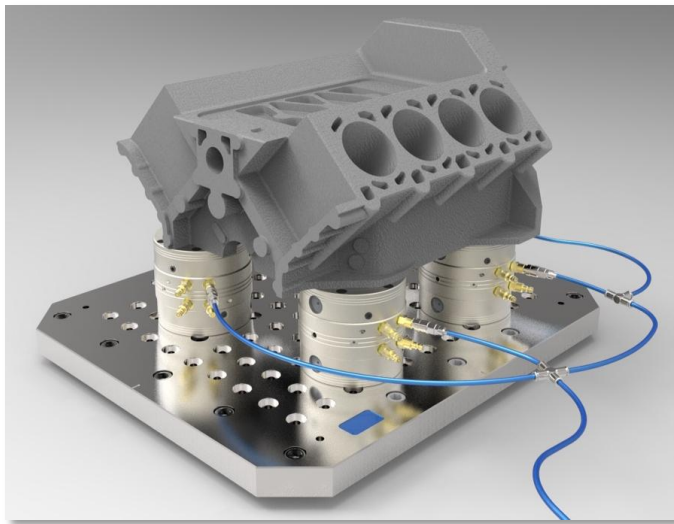
6. Remove the air supplies; modules clamp via spring force.

5. Open modules on the clamping side for the workpiece and insert the workpiece on the clamping modules that are directly fixed in place.



SCHUNK VERO-S

Direct clamping – clamp complex workpieces easily and safely



8. The workpiece can now be machined in one clamping set-up.

7. To achieve higher machining parameters, we recommend increasing the pull-in force through the turbo function.



SCHUNK VERO-S

Workpiece direct clamping - applications

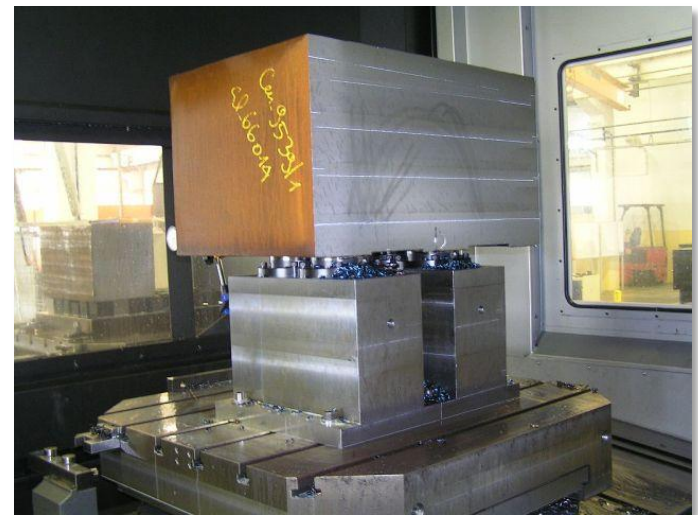


before:

Costly clamping with conventional clamping claws. Transmission on spindle on five sides.

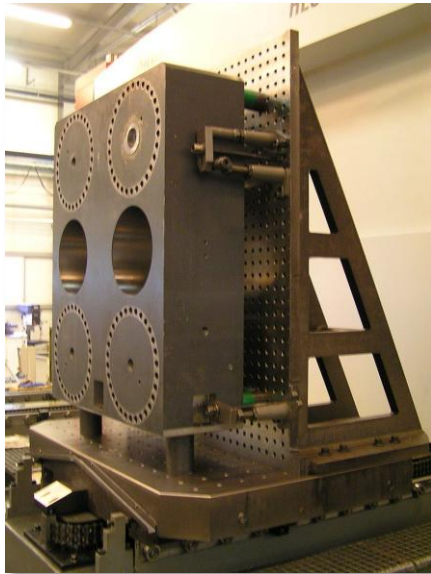
later:

Workpiece direct clamping clamped with SCHUNK VERO-S easily and safely. Transmission of spindle on five sides.



SCHUNK VERO-S

Workpiece direct clamping - applications

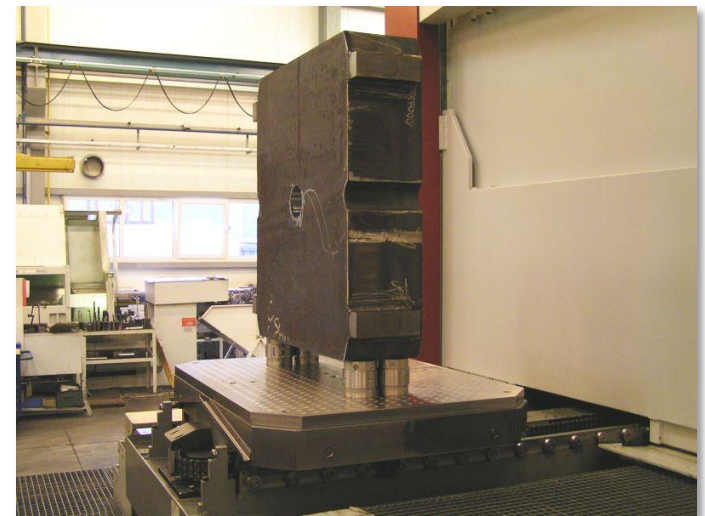


later:

Workpiece direct clamping clamped with SCHUNK VERO-S easily and safely. Transmission of spindle on five sides.

before:

Clamping with clamping claws on angle.
Transmission of spindle on five sides.



SCHUNK VERO-S

Workpiece direct clamping - applications



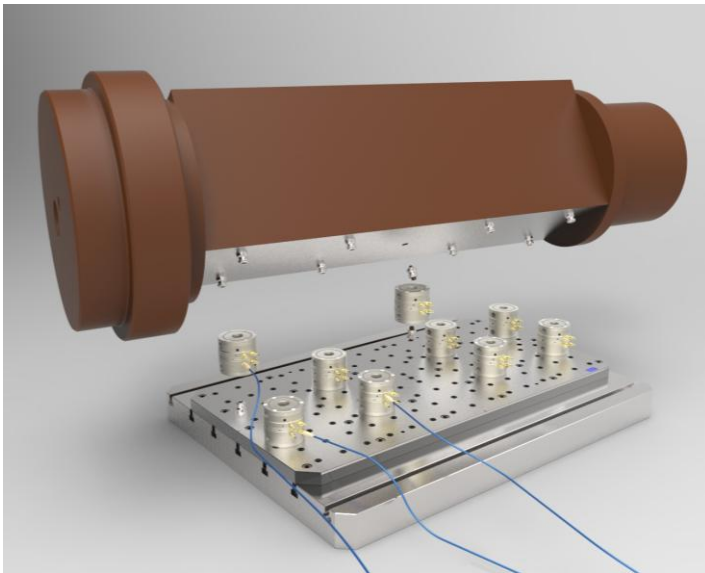
... and heavy-duty cutting

For bigger components too....



SCHUNK VERO-S

Workpiece direct clamping - applications



Advantages:

- reducing of set-up times more than 70 %
- safe clamping by large pull-in forces
- accurate zero point
- optimum workpiece accessibility
- exchanging processes easy and user-friendly
- a documentable clamping actuation

Superior Clamping and Gripping



www.schunk.com