



ROTA-S flex

Manual Lathe Chucks

Superior Clamping and Gripping



Product overview



Gripping Systems

Clamping Technology



Chuck Jaws



Stationary Workholding



Lathe Chucks



Toolholders



Hydraulic Expansion Technology



Manual Lathe Chucks



Power Lathe Chucks with Jaw Quick-change System



Power Lathe Chucks with Through-hole



Power Lathe Chucks without Through-hole



Pneumatic Power Chucks



Steady Rests

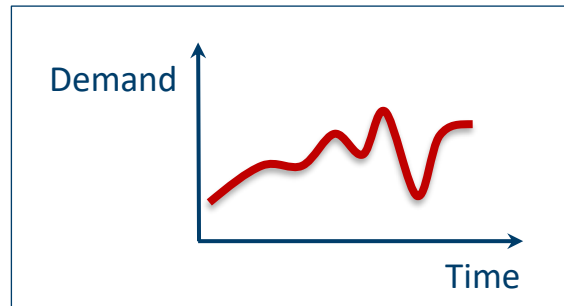
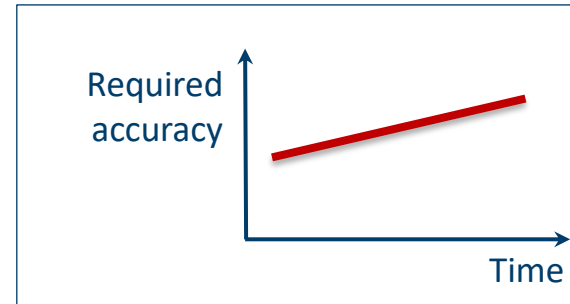
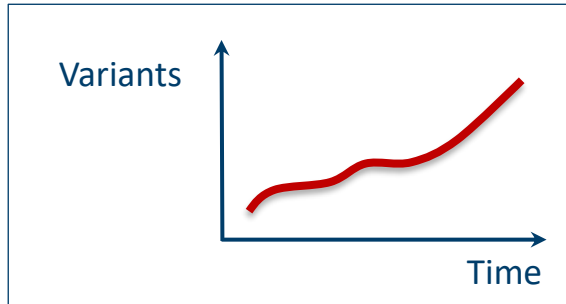


Quick-change Systems



Customized Solutions

Challenges



Flexibility and und set-up time optimization

ROTA-S flex

Example of application



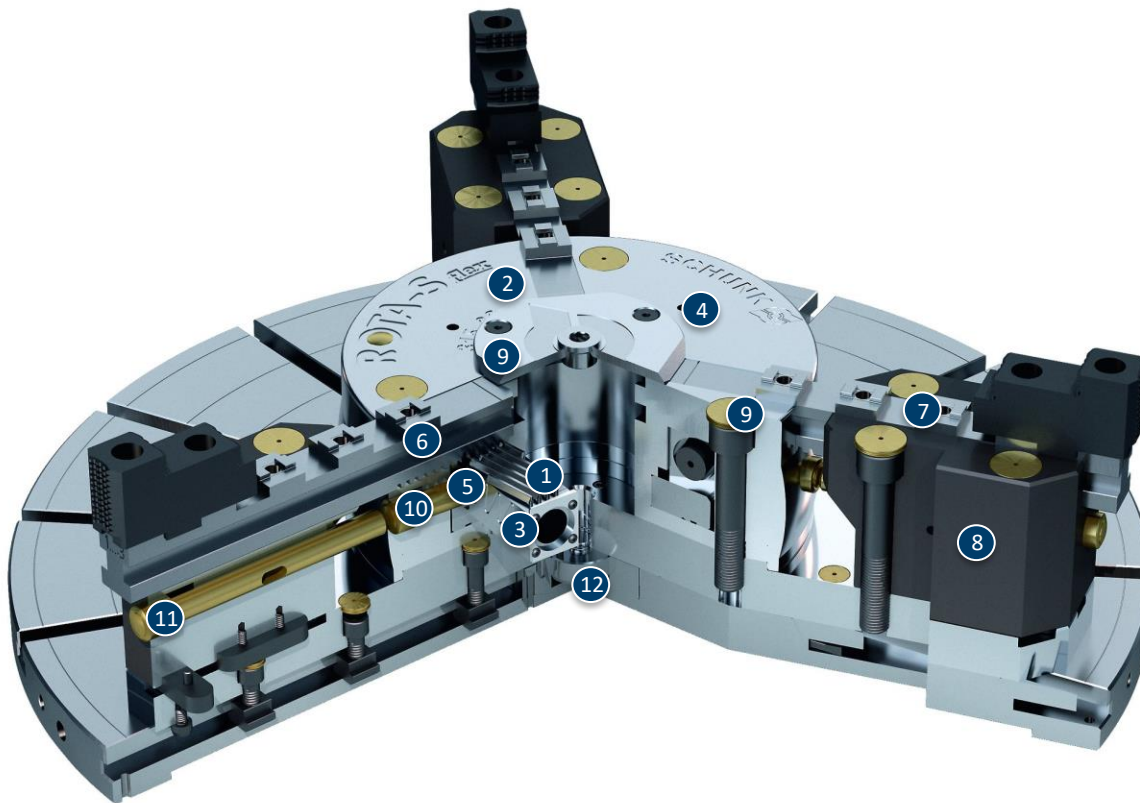
Clamping device:

ROTA-S flex 1200 on a milling machine with turning option.

Features/Application:

I.D. clamping of aluminium rim for finishing on a mill/turn machine. Highest flexibility and best accessibility for driven tools at a minimum own weight.

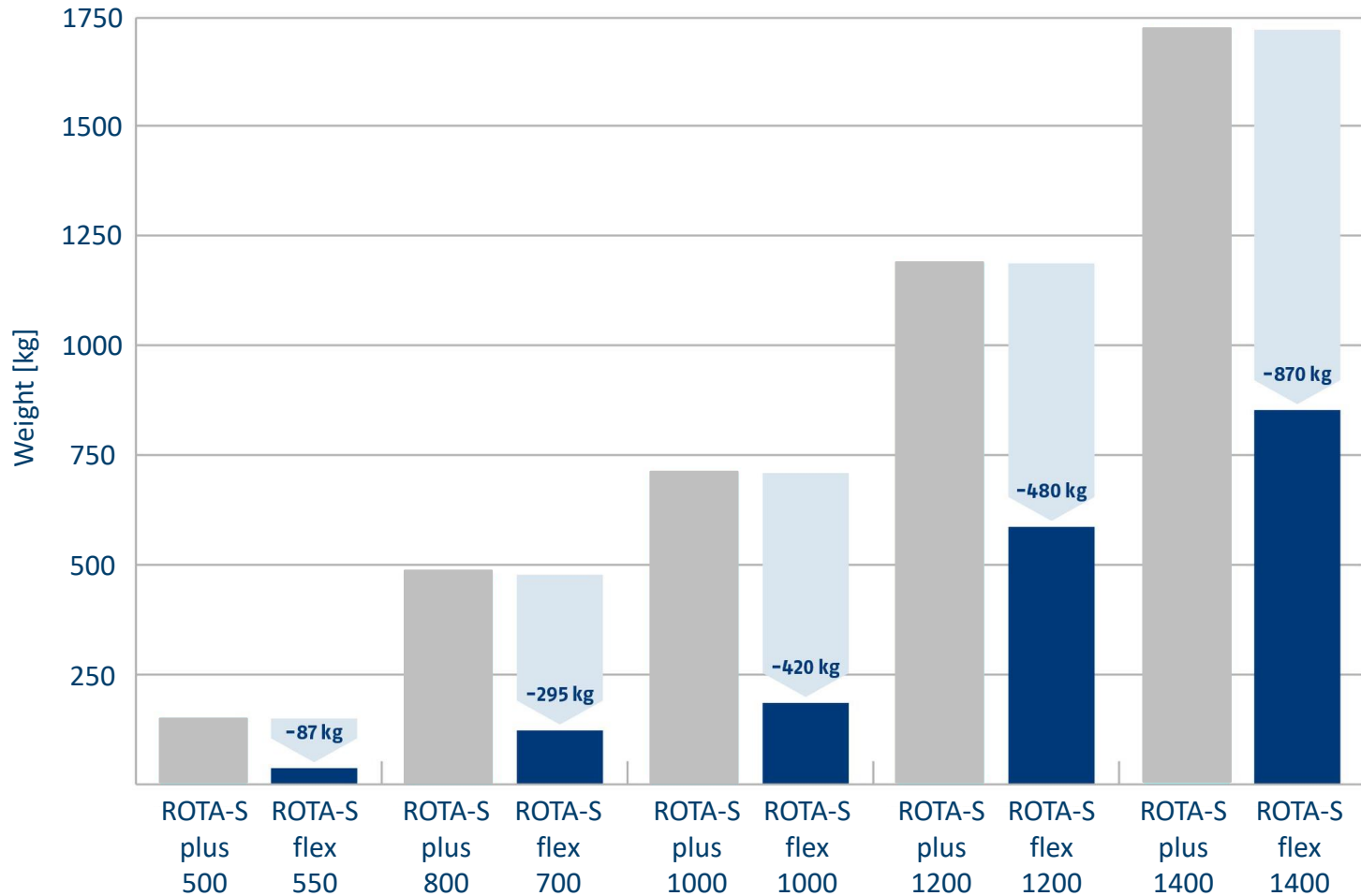
ROTA-S flex



- ① Wedge bar actuation system
- ② Hardened and extremely rigid base body
- ③ Optimized lubrication system
- ④ Mounting threads
- ⑤ Jaw quick-change system
- ⑥ Base jaws with angled serration (SFG)
- ⑦ Standard chuck jaw interface
- ⑧ Exchangeable guideway extension
- ⑨ Dirt-resistant design
- ⑩ Push button for jaw change
- ⑪ Push button extension
- ⑫ Centering pin

ROTA-S flex

Weight Reduction by ROTA-S flex compared to ROTA-S plus



ROTA-S flex

ROTA-S flex with extended guideways



ROTA-S flex without extended guideways



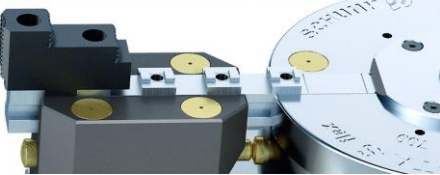
Clamping range of the ROTA-S flex

1



- 1 Hard stepped jaws at minimum clamping range

2



- 2 Hard stepped jaws at maximum clamping range

Variants ROTA-S flex

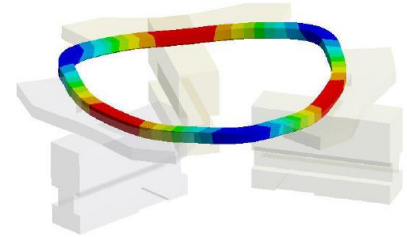
Technical data	Max. RPM [min ⁻¹]	Max. clamping force [kN]	Max. torque [Nm]	Stroke/jaw [mm]
ROTA-S flex 550	1000	100	120	7
ROTA-S flex 700	800	180	220	9.7
ROTA-S flex 1000	500	230	280	12
ROTA-S flex 1200	500	270	320	12
ROTA-S flex 1400	400	270	350	15

SCHUNK Services



Engineering

- Dimensioning of special plates designed to the manufacturing specifications
- Development of special solutions together with the customer
- FEM analysis for critical components



Testing

- Endurance tests with all new developments
- Abrasion checking
- Measurement of accuracy



Service

- Initial operation of customer's solution
- Inspection and maintenance
- Repairs



Superior Clamping and Gripping



© 2021 SCHUNK GmbH & Co. KG
schunk.com