

KONTEC KSC2

Centric clamping vise with jaw quick-change system

Superior Clamping and Gripping



Product Overview



Gripping Systems

Clamping Technology



Chuck Jaws



Lathe Chucks



Stationary Workholding



Toolholders



Hydraulic Expansion Technology



VERO-S



TANDEM



ROTA



KONTEC

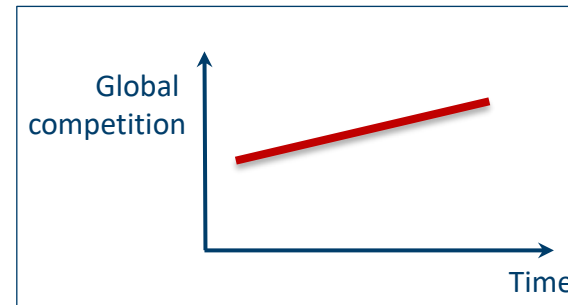
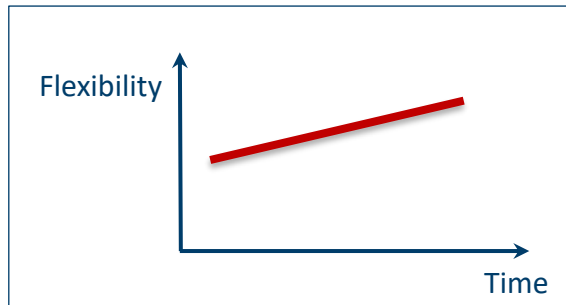
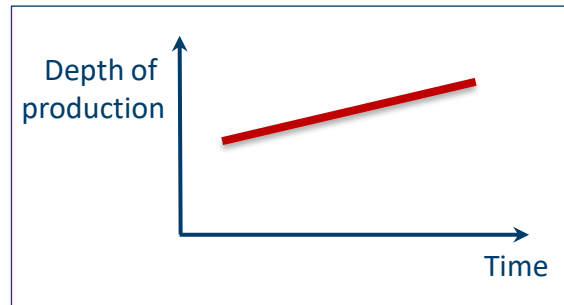


Tombstones



MAGNOS

Challenges

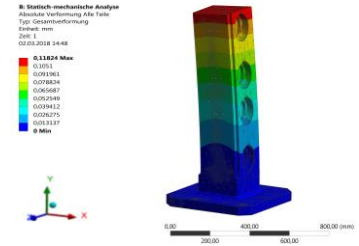


**Increasing importance
of workpiece clamping**

SCHUNK Services

Engineering

- Dimensioning of special plates designed to the manufacturing specifications
- Development of special solutions together with the customer
- FEM analysis for critical components



Testing

- Endurance tests with all new developments
- Abrasion checking
- Measurement of accuracy






Service

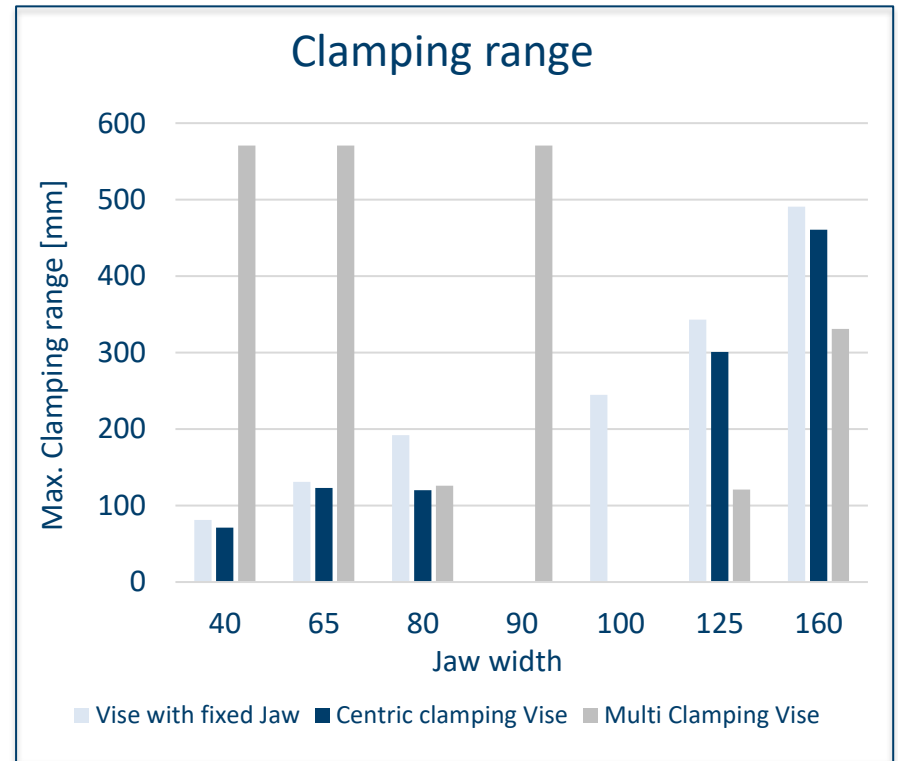
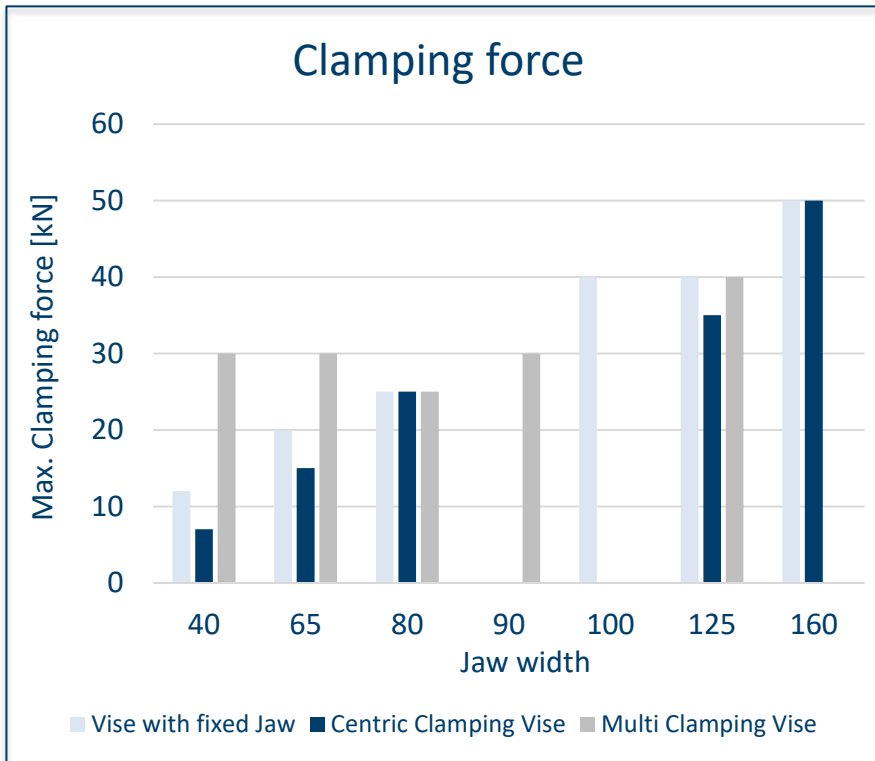
- Initial operation of customer's solution
- Inspection and maintenance
- Repairs



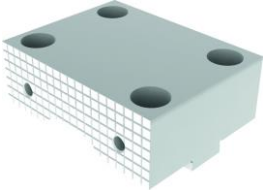


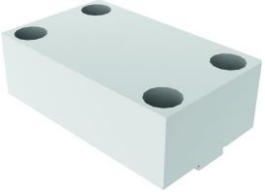



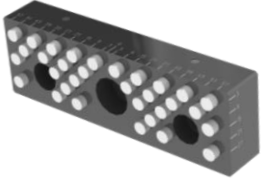
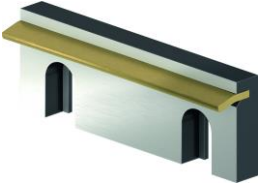


KONTEC Portfolio

Single-acting Vise	Centric Clamping Vise	Multi Clamping Vise
		
<ul style="list-style-type: none"> • Clamping towards a fixed jaw • Fixed jaw as reference • High repeat accuracy • Especially suitable for workpieces with dimensioning from the side 	<ul style="list-style-type: none"> • Symmetric clamping • Workpiece zero point is always in the center • Optimum accessibility for 5-axis milling • Especially suitable for workpieces with dimensioning from the center 	<ul style="list-style-type: none"> • Clamping of multiple workpieces • Multifunctional usage • Reduction of setup times • Optimum usage of the machine table

KONTEC Portfolio



Fast adaption to new clamping tasks

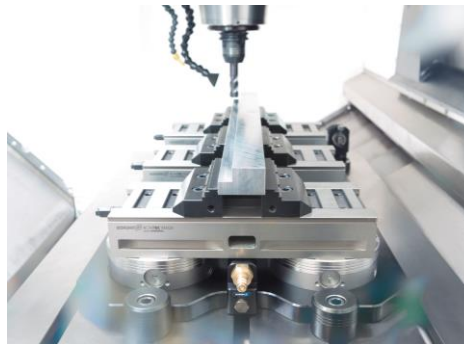
System Jaws			
Standard reversible jaw	Reversible jaw, grip -grip	Enlarged span width -VS	Aluminium jaw -AL
			
Adapter- and swivel plates -R	5-axis standard jaw -5A / -5A-VS	6-fold jaw -6B	Reversible jaw grip, smooth central jaw -ST
			
Chuck Jaws			
Chuck jaw with locator pin	Spring plate, pull-down jaw	Prismatic jaw	Stepped jaw, grip
			

KONTEC Overview

Single-acting Vise



Centric Clamping Vise

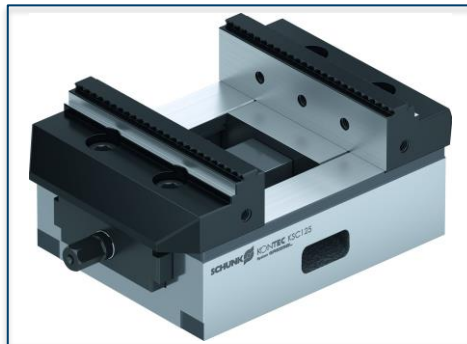


Multi Clamping Vise



KONTEC Centric Clamping Vise

KSC
Basic Clamping Vise

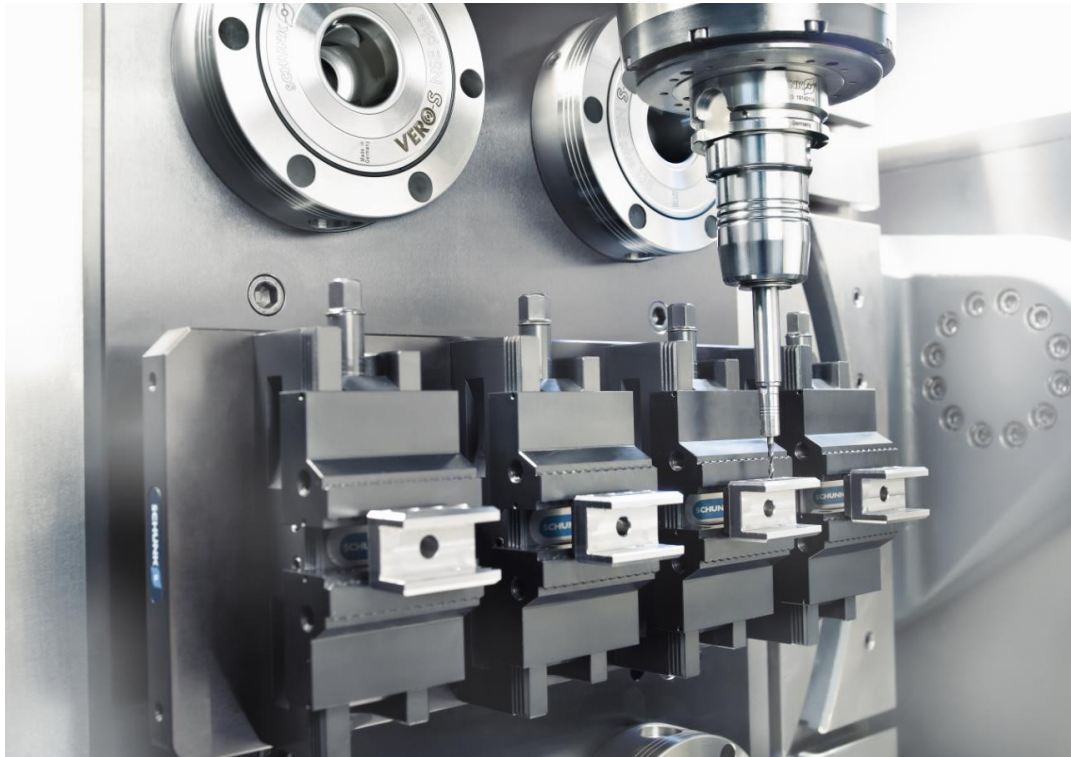


KSC2
Clamping vise for small components

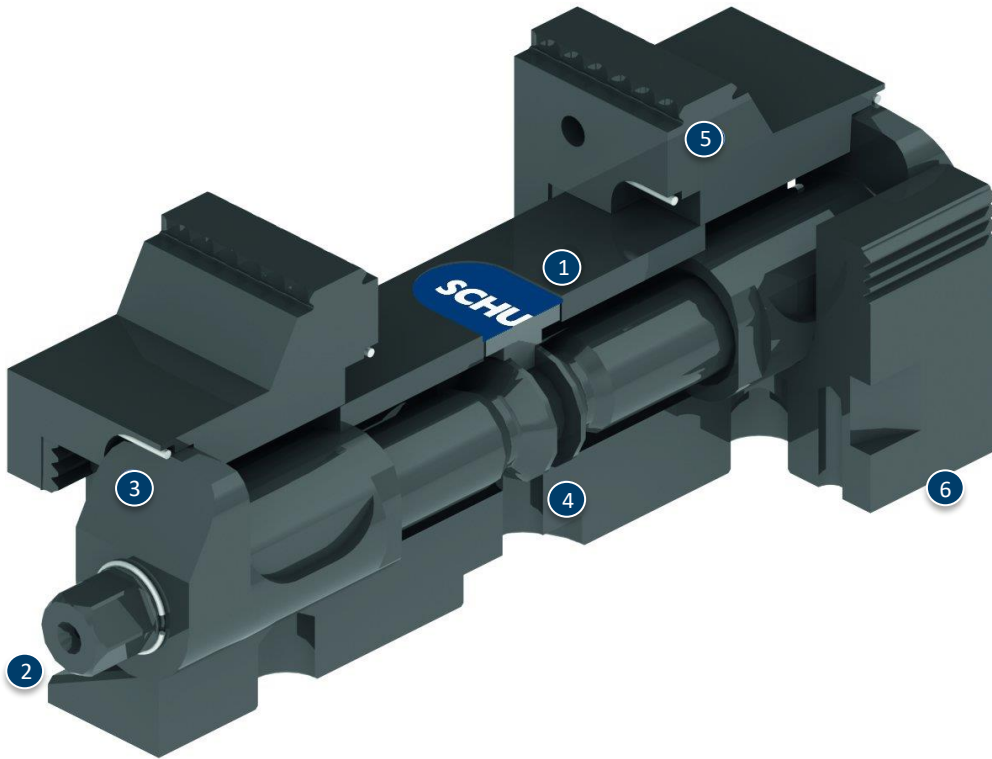


KONTEC KSC2

Example of application



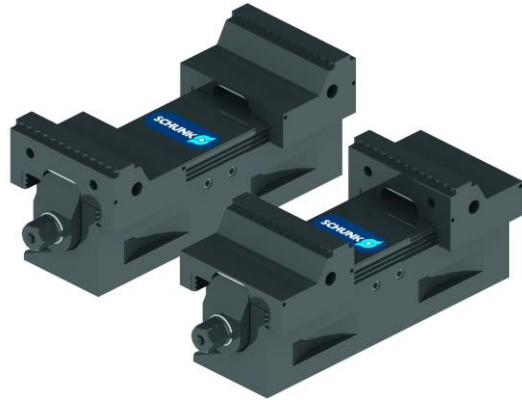
KONTEC KSC2



- ① Complete encapsulated
- ② Operation with hexagon connection
- ③ Jaw quick-change
- ④ Center adjustment
- ⑤ 1st + 2nd sided machining
- ⑥ Compact design

KONTEC KSC2

KSC2 grip



KSC2 precision



Variants of KONTEC KSC2

Technical data	KSC2 40* ¹	KSC2 65* ²
Jaw width [mm]	40	65
Clamping force [kN]	7	15
Max. torque [Nm]	20	50

*¹ Additionally available in -grip and -mini

*² Additionally available in -grip

Superior Clamping and Gripping



© 2021 SCHUNK GmbH & Co. KG
schunk.com