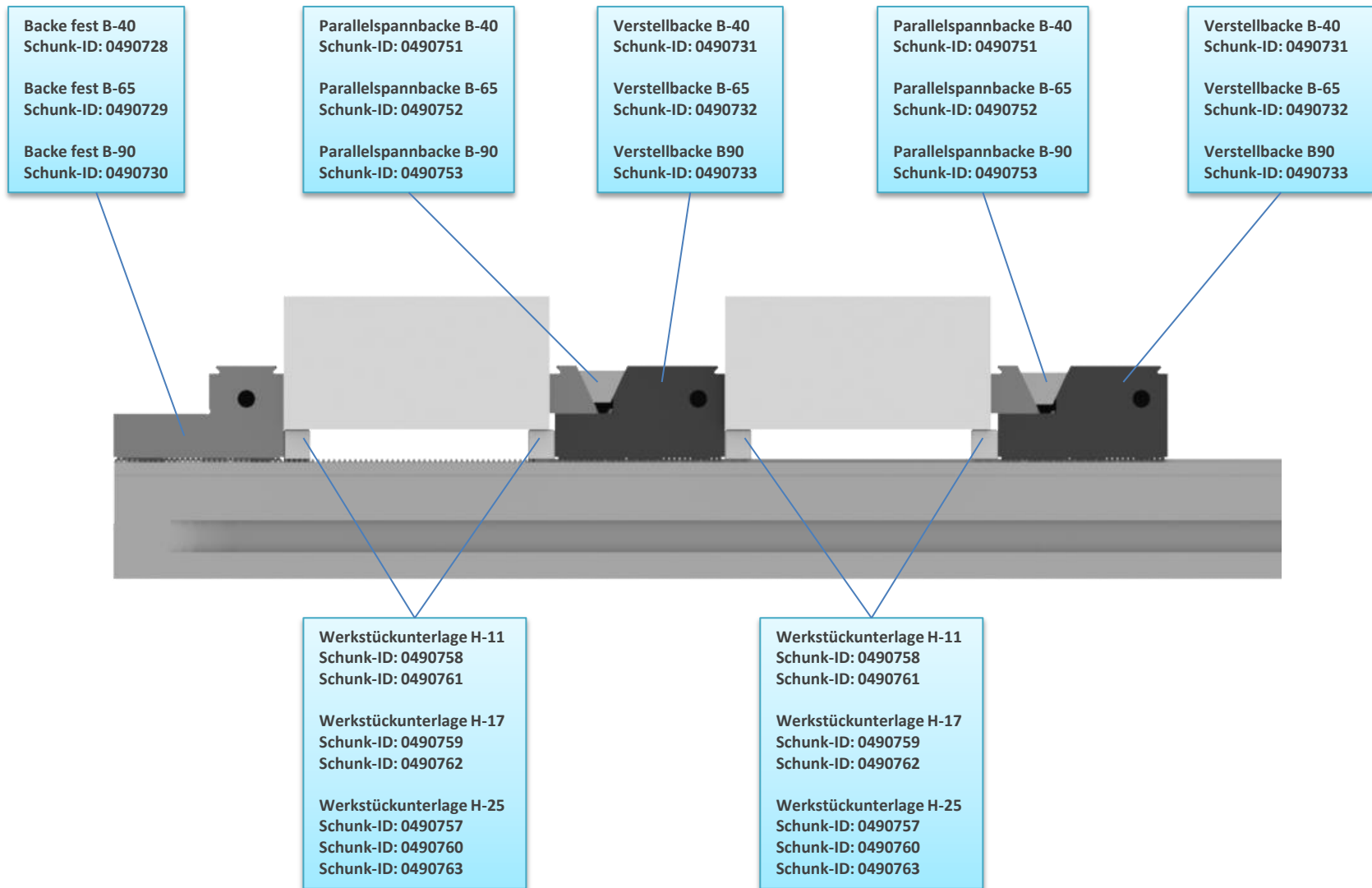


Superior Clamping and Gripping

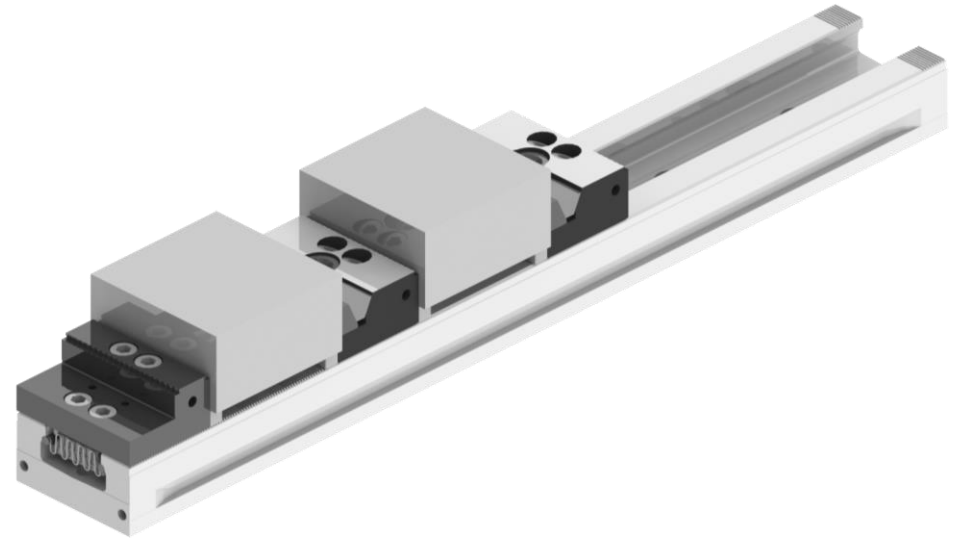


# Spannprinzip KSM2

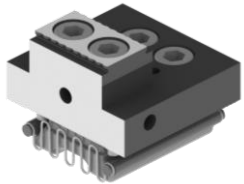
# KSM2 mit glatten Backen



# KSM2 mit glatten Backen



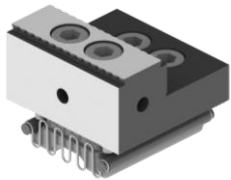
Backe fest B-40  
Schunk-ID: 0490728



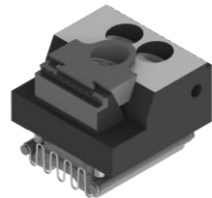
Verstellbacke B-40 mit  
Parallelsannbacke B-40



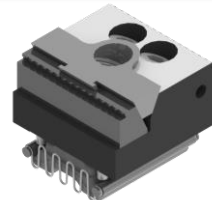
Backe fest B-65  
Schunk-ID: 0490729



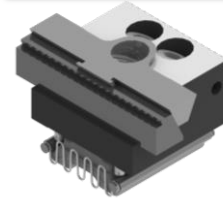
Verstellbacke B-65 mit  
Parallelsannbacke B-40



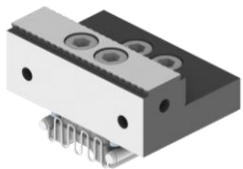
Verstellbacke B-65 mit  
Parallelsannbacke B-65



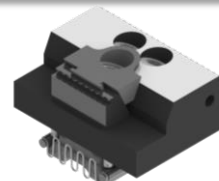
Verstellbacke B-65 mit  
Parallelsannbacke B-90



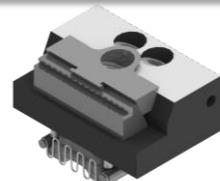
Backe fest B-90  
Schunk-ID: 0490730



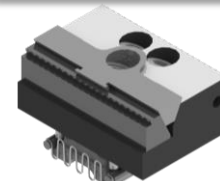
Verstellbacke B-90 mit  
Parallelsannbacke B-40



Verstellbacke B-90 mit  
Parallelsannbacke B-65



Verstellbacke B-90 mit  
Parallelsannbacke B-90



# KSM2 mit Parallelspannbacke grip

Backe fest B-40  
Schunk-ID: 0490728

Backe fest B-65  
Schunk-ID: 0490729

Backe fest B-90  
Schunk-ID: 0490730

Parallelspannbacke B-40  
Schunk-ID: 0490751

Parallelspannbacke B-65  
Schunk-ID: 0490752

Parallelspannbacke B-90  
Schunk-ID: 0490753

Verstellbacke B-40  
Schunk-ID: 0490731

Verstellbacke B-65  
Schunk-ID: 0490732

Verstellbacke B-90  
Schunk-ID: 0490733

Parallelspannbacke B-40  
Schunk-ID: 0490751

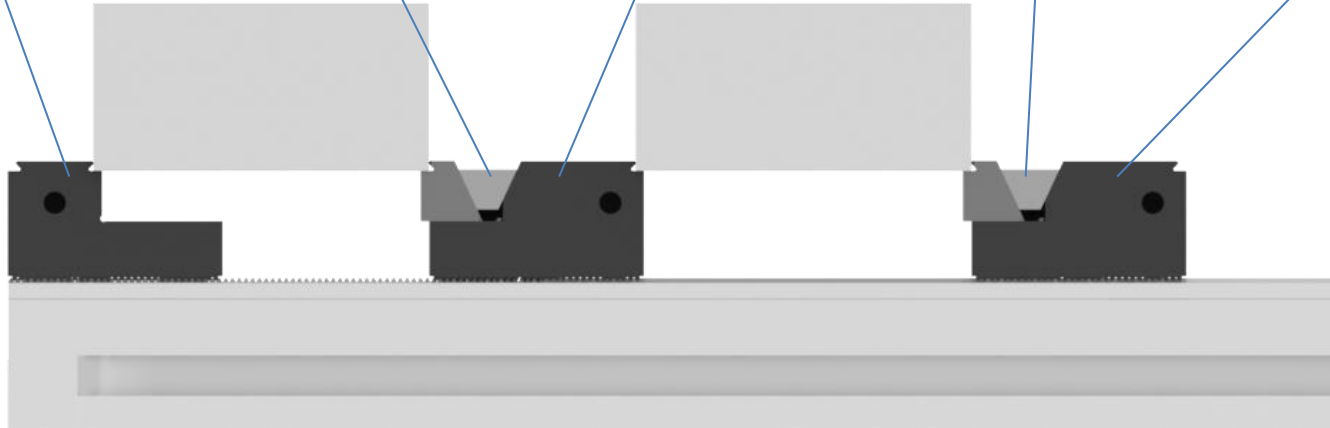
Parallelspannbacke B-65  
Schunk-ID: 0490752

Parallelspannbacke B-90  
Schunk-ID: 0490753

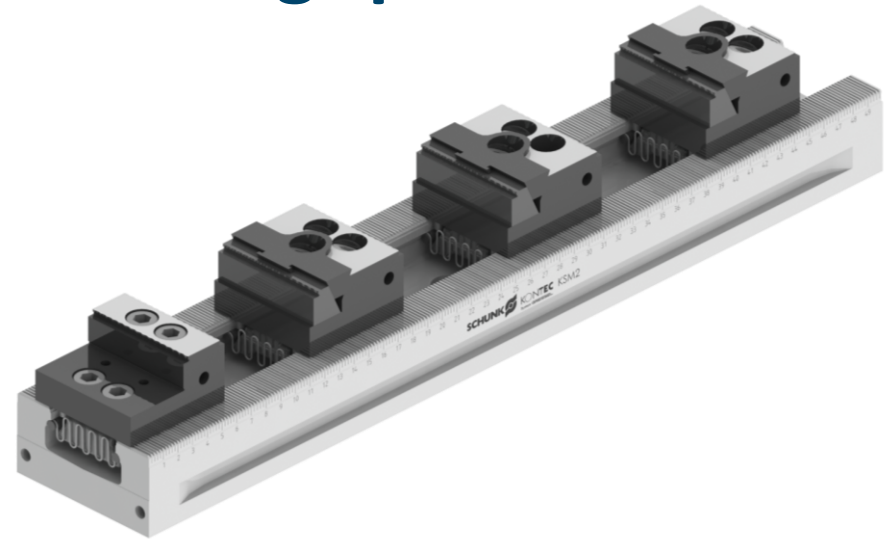
Verstellbacke B-40  
Schunk-ID: 0490731

Verstellbacke B-65  
Schunk-ID: 0490732

Verstellbacke B-90  
Schunk-ID: 0490733



# KSM2 mit Parallelspannbacke grip



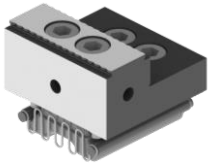
Backe fest B-40  
Schunk-ID: 0490728



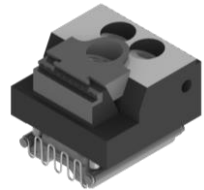
Verstellbacke B-40 mit  
Parallelspannbacke B-40



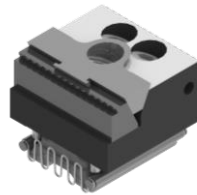
Backe fest B-65  
Schunk-ID: 0490729



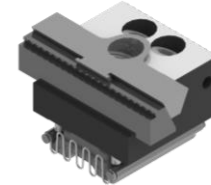
Verstellbacke B-65 mit  
Parallelspannbacke B-40



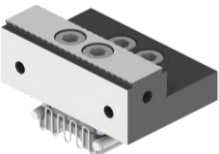
Verstellbacke B-65 mit  
Parallelspannbacke B-65



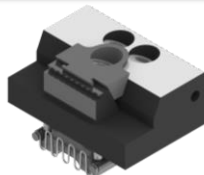
Verstellbacke B-65 mit  
Parallelspannbacke B-90



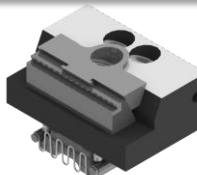
Backe fest B-90  
Schunk-ID: 0490730



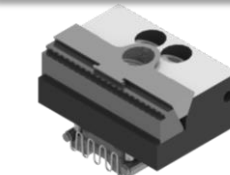
Verstellbacke B-90 mit  
Parallelspannbacke B-40



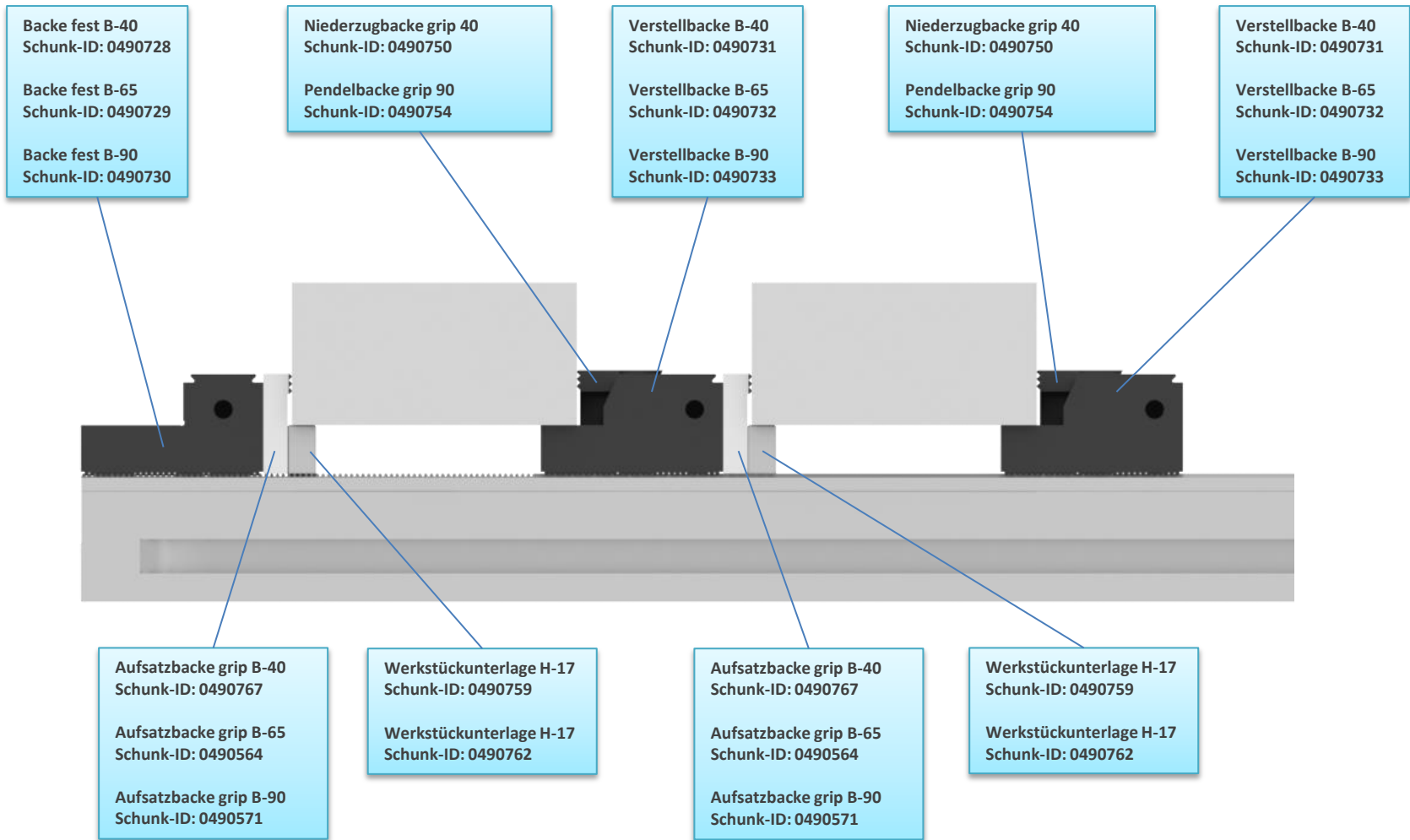
Verstellbacke B-90 mit  
Parallelspannbacke B-65



Verstellbacke B-90 mit  
Parallelspannbacke B-90

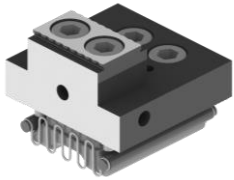


# KSM2 mit Niederzug –und Pendelniederzug Backen



# KSM2 mit Niederzug -und Pendelniederzug Backen

Backe fest B-40  
Schunk-ID: 0490728



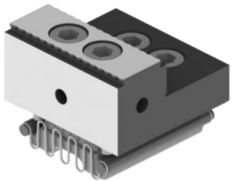
Verstellbacke B-40 mit  
Niederzugbacke grip 40



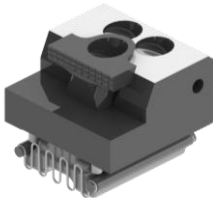
Verstellbacke B-40 mit  
Pendelbacke grip 90



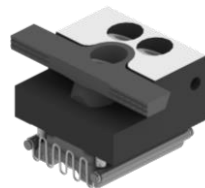
Backe fest B-65  
Schunk-ID: 0490729



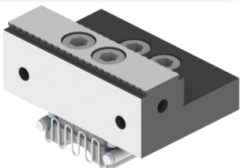
Verstellbacke B-65 mit  
Niederzugbacke grip 40



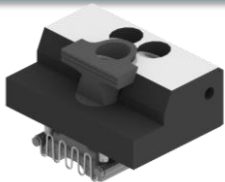
Verstellbacke B-65 mit  
Pendelbacke grip 90



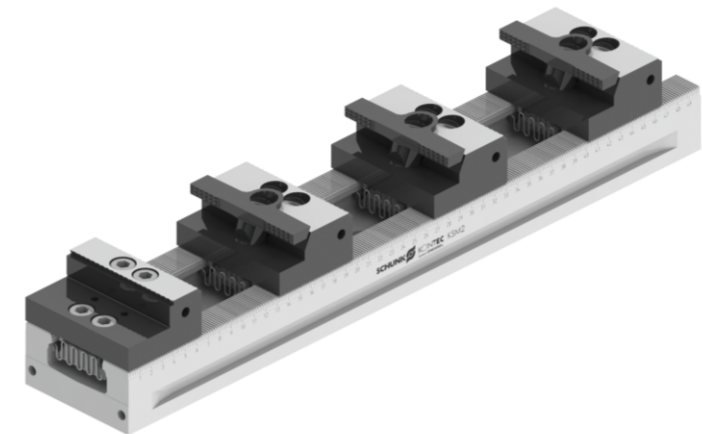
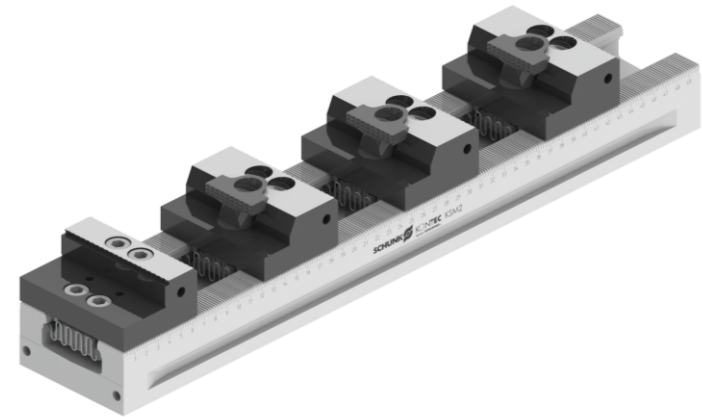
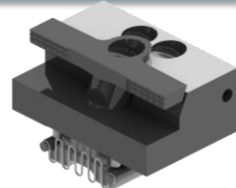
Backe fest B-90  
Schunk-ID: 0490730



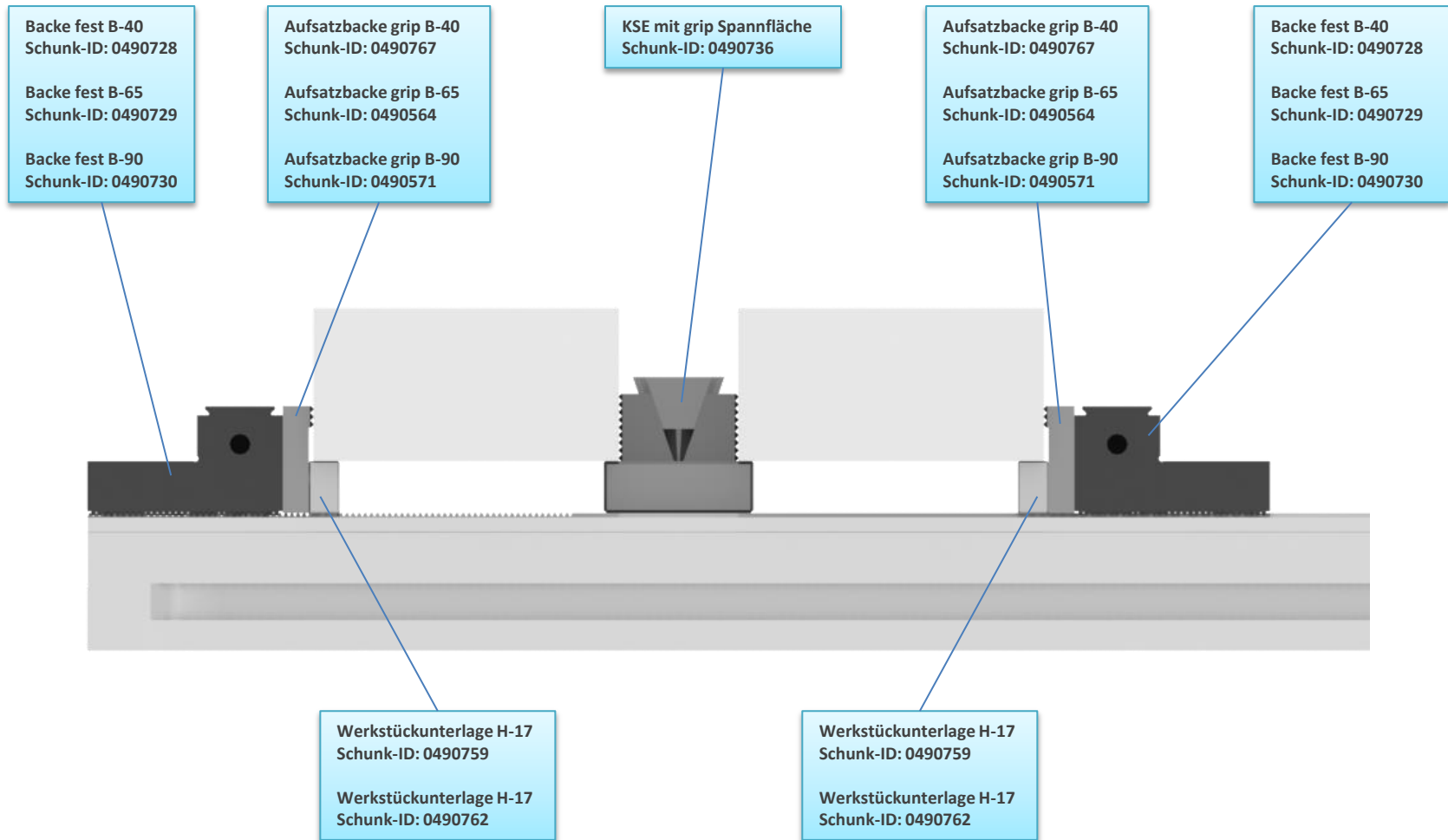
Verstellbacke B-90 mit  
Niederzugbacke grip 40



Verstellbacke B-90 mit  
Pendelbacke grip 90

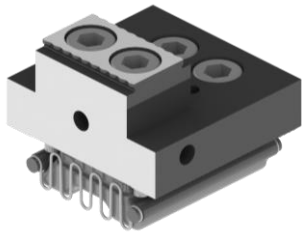


# KSM2 mit KSE grip Spannfläche

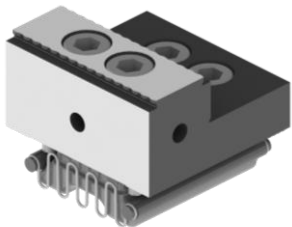


# KSM2 mit KSE grip Spannfläche

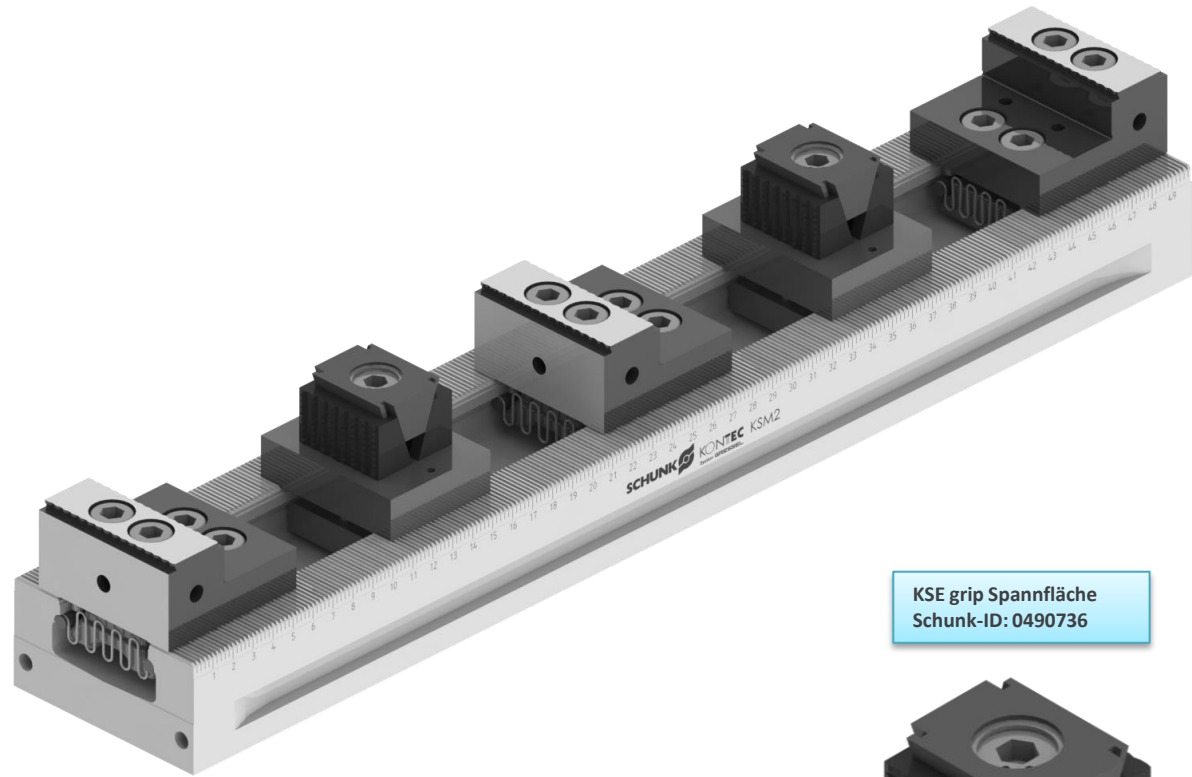
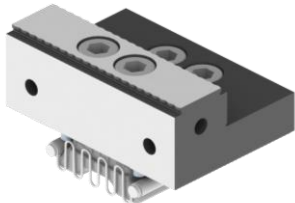
Backe fest B-40  
Schunk-ID: 0490728



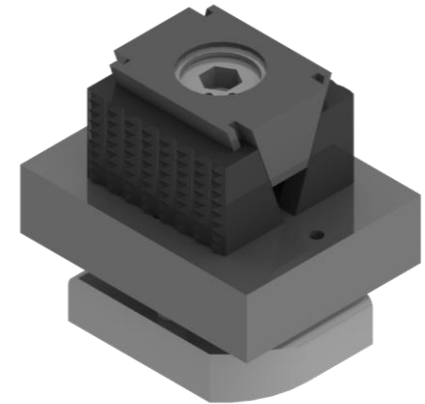
Backe fest B-65  
Schunk-ID: 0490729



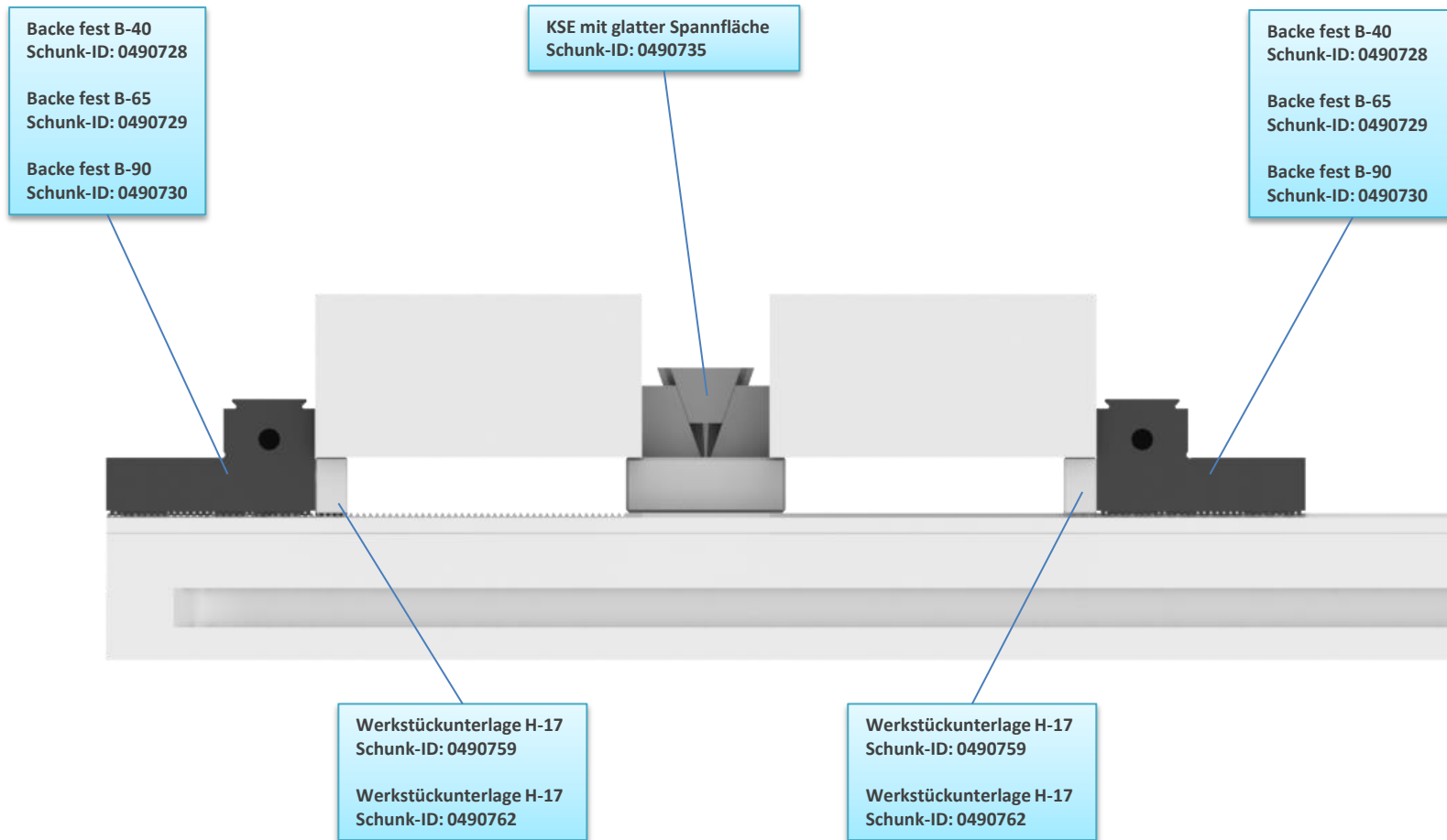
Backe fest B-90  
Schunk-ID: 0490730



KSE grip Spannfläche  
Schunk-ID: 0490736

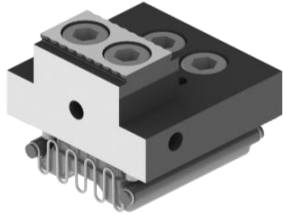


# KSM2 mit KSE glatter Spannfläche

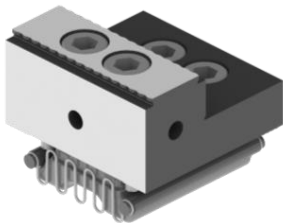


# KSM2 mit KSE glatter Spannfläche

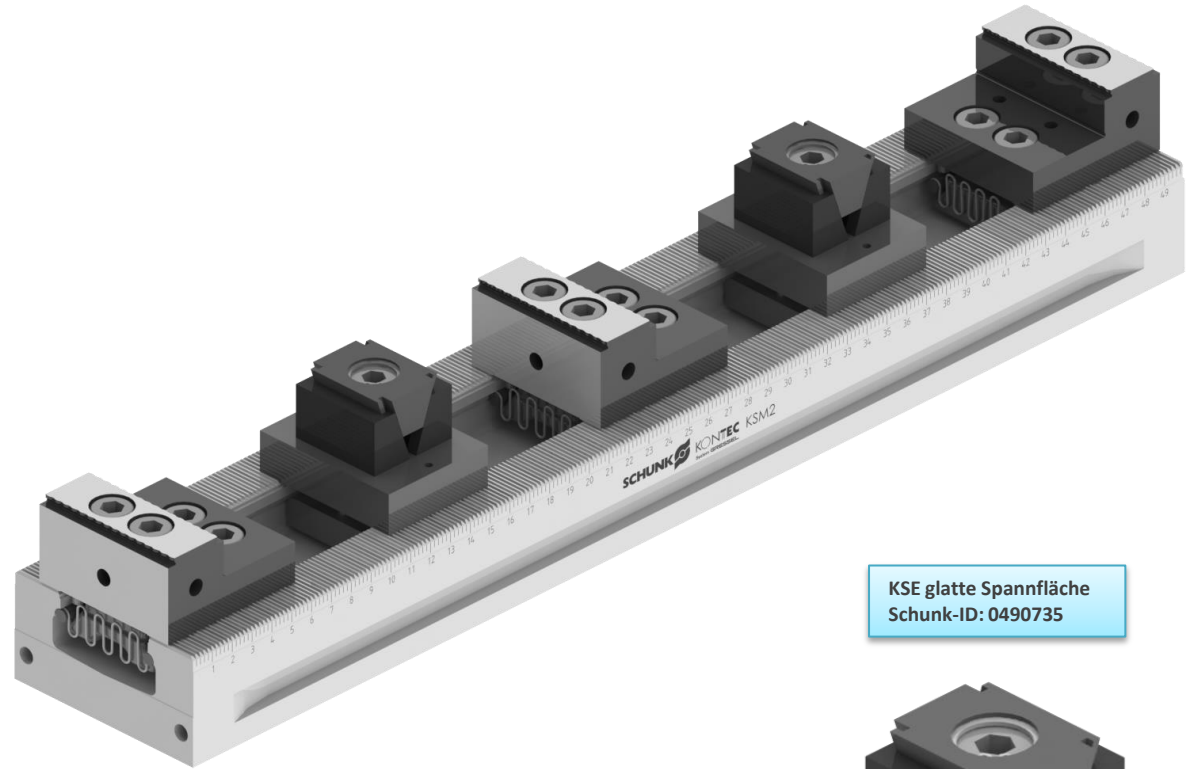
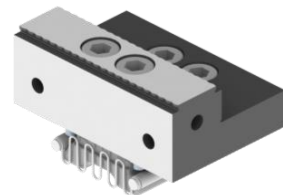
Backe fest B-40  
Schunk-ID: 0490728



Backe fest B-65  
Schunk-ID: 0490729



Backe fest B-90  
Schunk-ID: 0490730



KSE glatte Spannfläche  
Schunk-ID: 0490735

