



# ROTA TB2

Pneumatic Power Chucks

Superior Clamping and Gripping



# Product overview



## Gripping Systems

## Clamping Technology



Chuck Jaws



Stationary Workholding



Lathe Chucks



Toolholders



Hydraulic Expansion Technology



Manual Lathe Chucks



Power Lathe Chucks with Jaw Quick-change System



Power Lathe Chucks with Through-hole



Power Lathe Chucks without Through-hole



Pneumatic Power Chucks



Steady Rests



Quick-change Systems



Customized Solutions

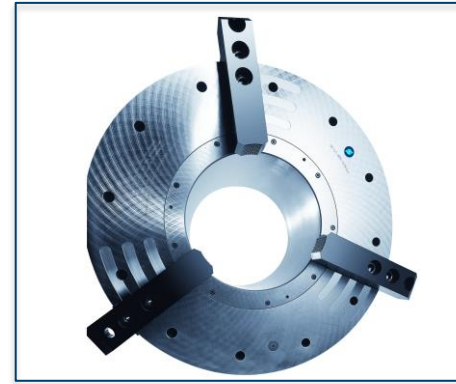
# ROTA overview

## Pneumatic Power Chucks

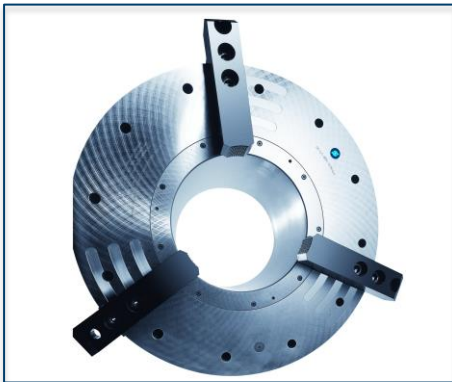
ROTA TP



ROTA TB



ROTA TB-LH



ROTA TB2

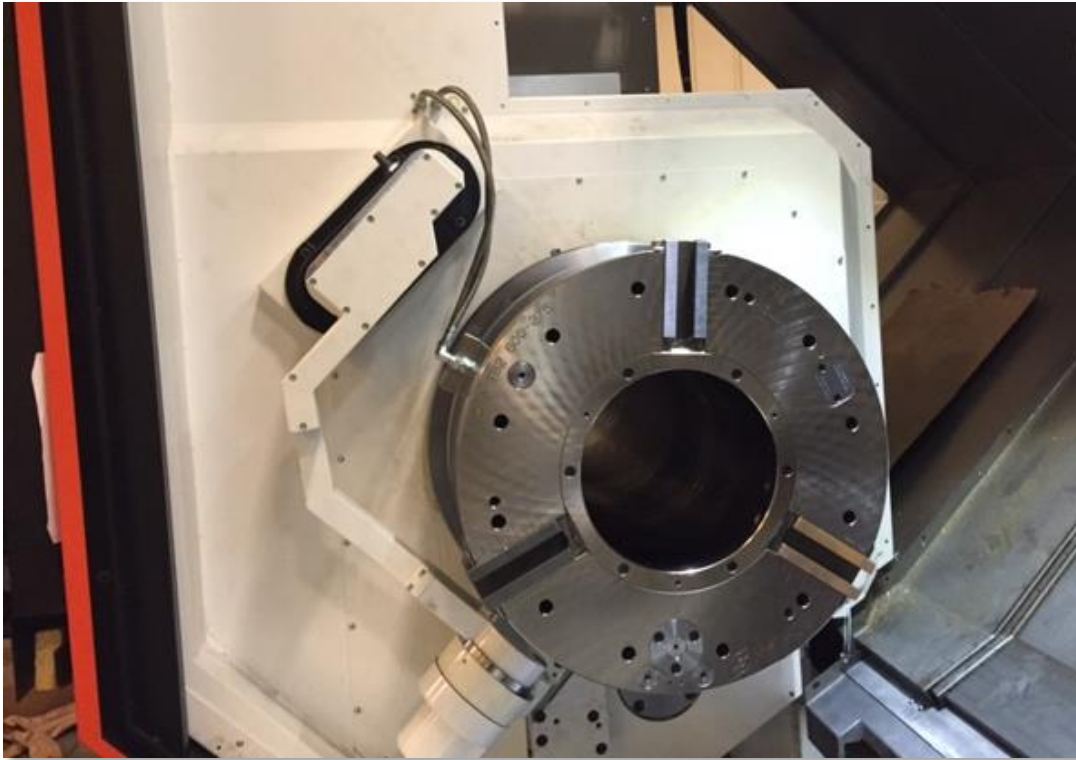


ROTA TB2-LH



# ROTA TB2

## Example of application



### Clamping device:

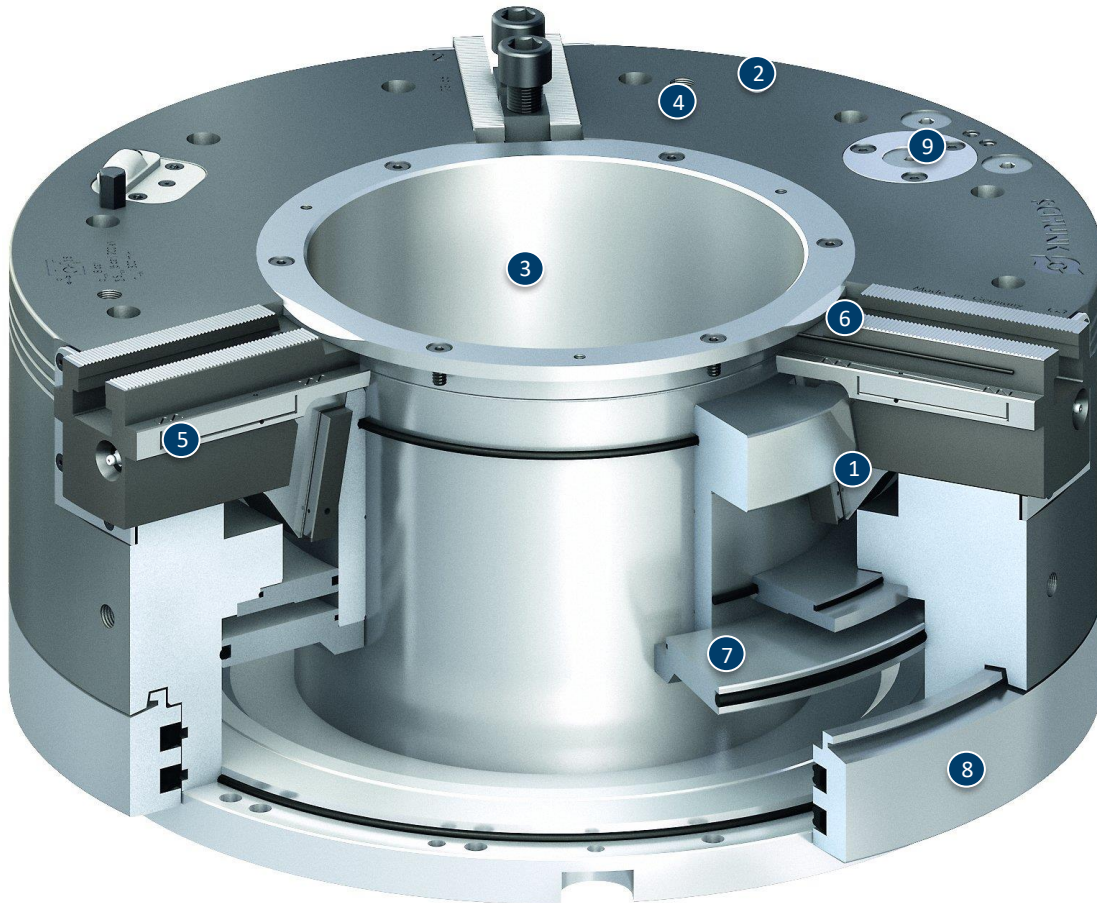
ROTA TB2 600-275.

### Features/Application:

Pneumatic power chuck with integrated cylinder of the newest generation. Optimized sealing prevents the penetration of dirt, coated functional components ensure a long service life and fast ventilation allow shorter cycle times.

Extra large through-hole for O.D. clamping of pipes with big diameter.

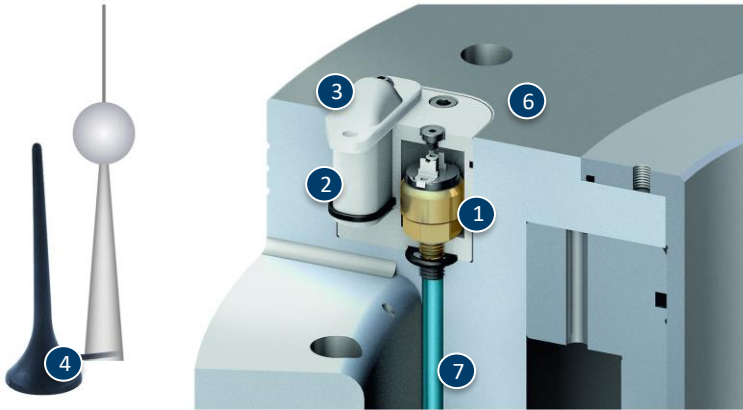
# ROTA TB2



- 1 Wedge hook drive
- 2 Corrosion-resistant, coated and extremely rigid base body
- 3 Very large through-hole
- 4 Mounting threads
- 5 Optimized lubrication system
- 6 Sealed base jaw guidance
- 7 Pneumatic cylinder integrated in the chuck
- 8 Static distributor ring
- 9 Pressure maintenance valve

# ROTA TB2

## RSS-P1: Wireless Clamping Pressure Control



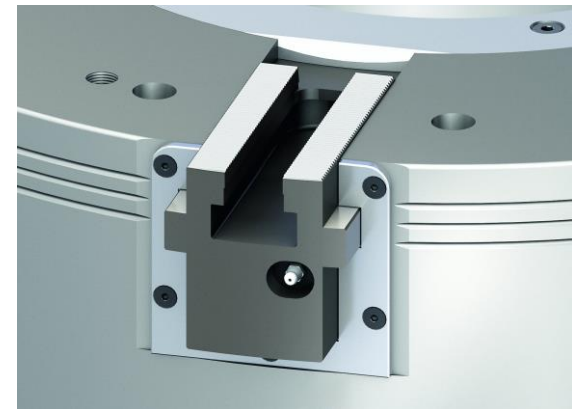
- ① Pressure sensor connected with the cylinder
- ② Transmitter unit
- ③ Protection cover
- ④ Receiver antenna
- ⑤ Receiver
- ⑥ Chuck body ROTA TB2 made out of steel
- ⑦ Channel bores

## Corrosion resistant components



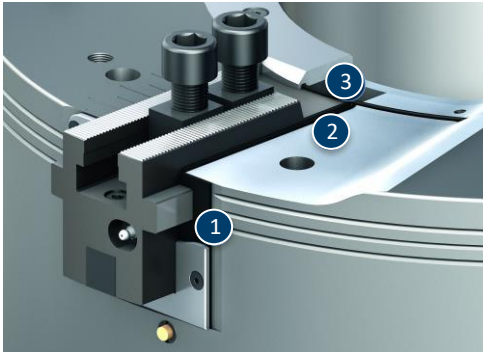
- ① Body
- ② Piston
- ③ Center sleeve

## Base jaw guidance



# ROTA TB2

## Sealed base jaw guidance

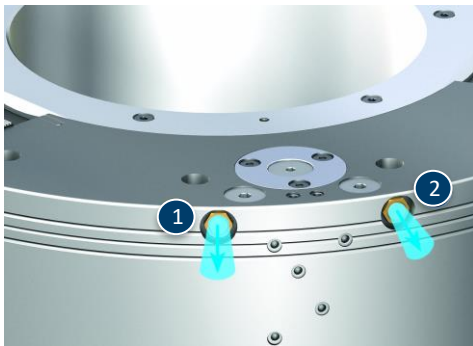


- 1 Front-end profile sealing element
- 2 Sealing element
- 3 O-ring

## Optimized lubrication system

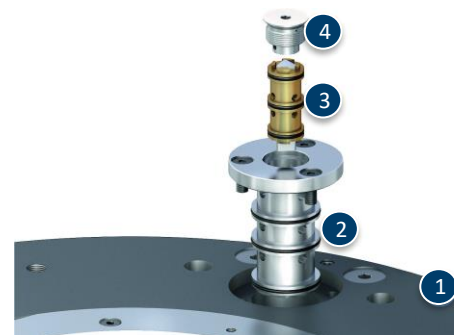


## Fast ventilation



- 1 Escaping air
- 2 Escaping air

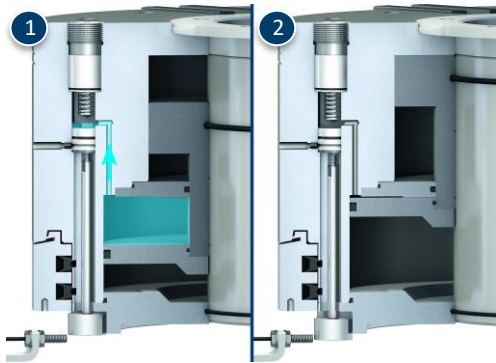
## Exchangeable valve



- 1 Chuck body
- 2 Valve insert
- 3 Pressure maintenance valve
- 4 Sealing cap

# ROTA TB2

## Pressure monitoring via sensor (optional)



- 1 Sufficient operating pressure is present
- 2 Pressure loss

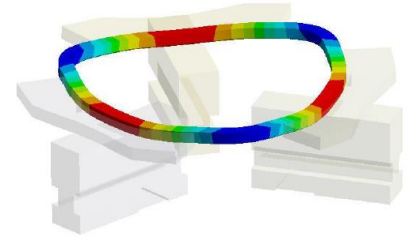
# Variants ROTA TB2

Technische Daten	Max. RPM [min <sup>-1</sup> ]	Max. clamping force (at 6 bar) [kN]	stroke/jaw [mm]	Through-hole [mm]
ROTA TB2 470-140	1700	180	7	140
ROTA TB2 470-185	1700	115	7	185
ROTA TB2 570-230	1300	220	11.7	230
ROTA TB2 600-275	1300	200	11.7	275
ROTA TB2 685-325	1000	280	10	325
ROTA TB2 850-375	750	240	11.8	375
ROTA TB2 1000-560	500	240	12.8	560

# SCHUNK Services

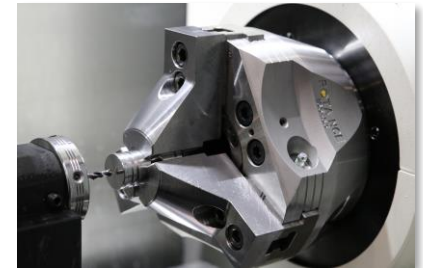
## Engineering

- Dimensioning of special plates designed to the manufacturing specifications
- Development of special solutions together with the customer
- FEM analysis for critical components



## Testing

- Endurance tests with all new developments
- Abrasion checking
- Measurement of accuracy



## Service

- Initial operation of customer's solution
- Inspection and maintenance
- Repairs



Superior Clamping and Gripping



© 2021 SCHUNK GmbH & Co. KG  
schunk.com