



ROTA NCX

Power Lathe Chucks with Jaw Quick-change

Superior Clamping and Gripping



Product overview



Gripping Systems

Clamping Technology



Chuck Jaws



Stationary Workholding



Lathe Chucks



Toolholders



Hydraulic Expansion Technology



Manual Lathe Chucks



Power Lathe Chucks with Jaw Quick-change System



Power Lathe Chucks with Through-hole



Power Lathe Chucks without Through-hole



Pneumatic Power Chucks



Steady Rests

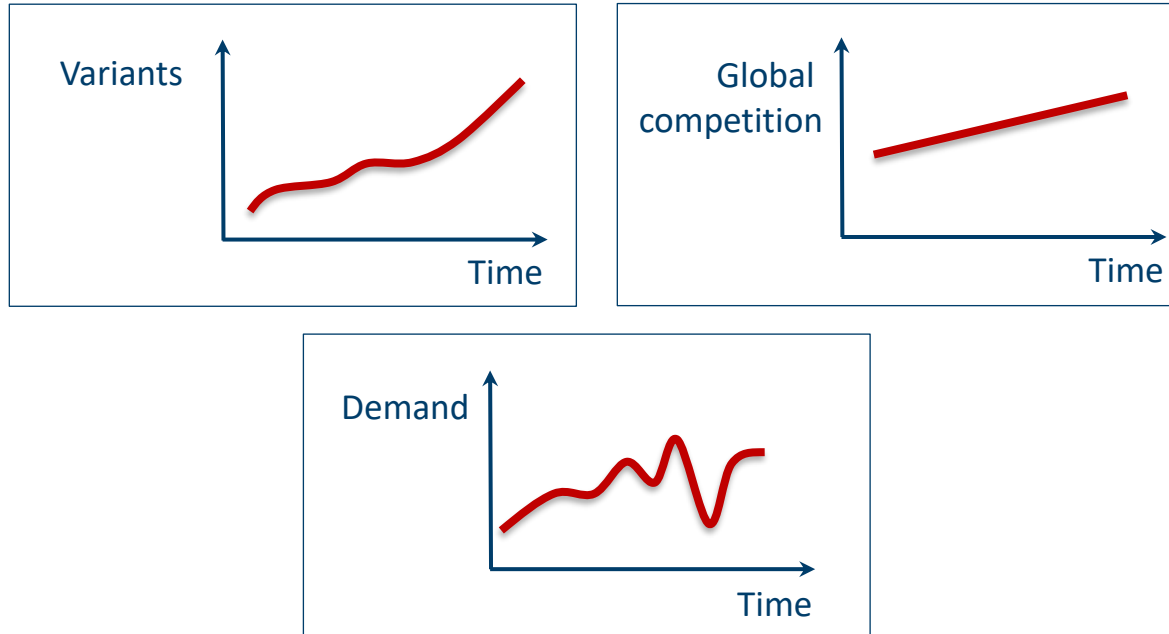


Quick-change Systems



Customized Solutions

Challenges



Flexibility and und set-up time optimization

ROTA overview

Power Lathe Chucks with Jaw Quick-change System

ROTA THW plus



ROTA THW vario

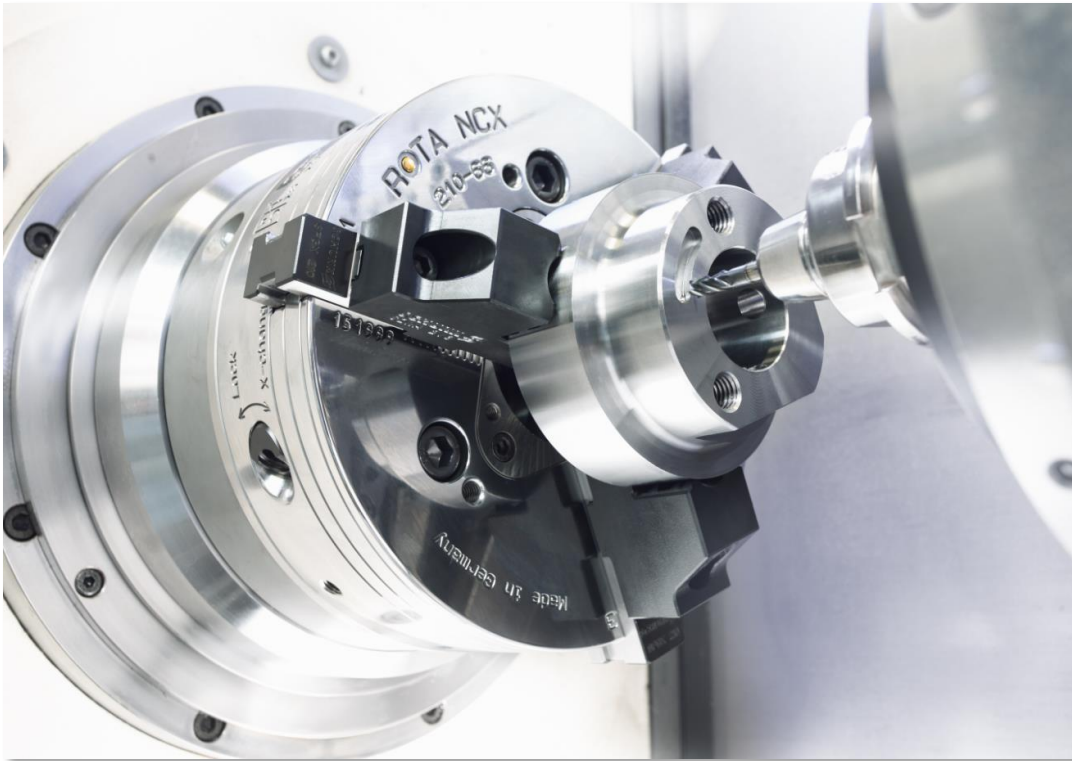


ROTA NCX



ROTA NCX

Example of application



Clamping device:

ROTA NCX 210 with claw jaws.

Features/Application:

Quick conversion for changing diameters in series or rather individual parts.

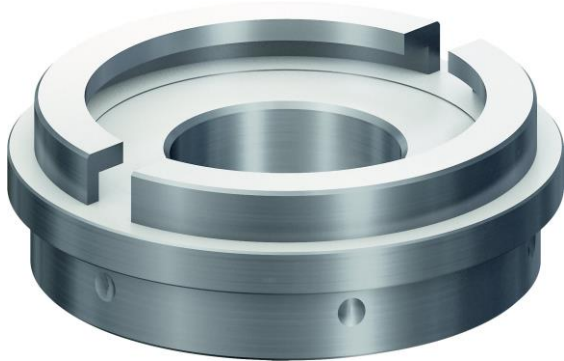
ROTA NCX



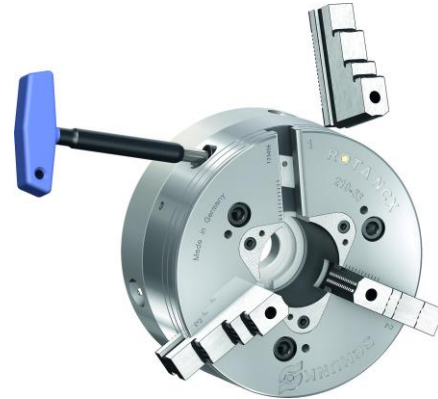
- ① Wedge bar actuation system
- ② Hardened and extremely rigid base body
- ③ Large through-hole
- ④ Optimized lubrication system
- ⑤ Mounting threads
- ⑥ Jaw quick-change system
- ⑦ Standard chuck jaw interface
- ⑧ Locking mechanism with jaw presence monitor
- ⑨ Reliable jaw lock
- ⑩ Weight-optimized design

ROTA NCX

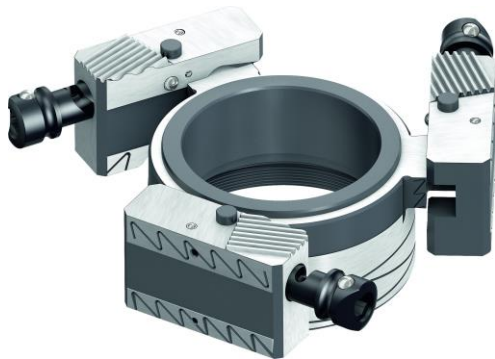
**Absolute flexibility – blank draw nut
Compatibility Kitagawa BB**



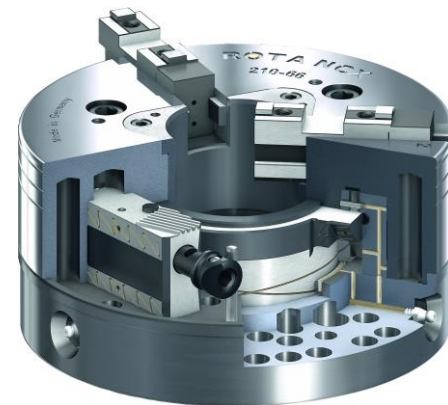
Quick jaw change



High repeat accuracy after changing jaws

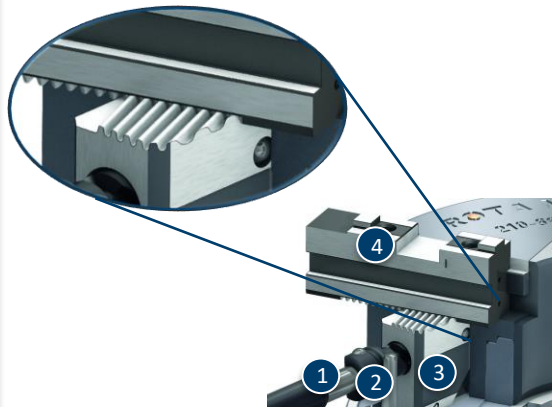


Optimized lubrication system



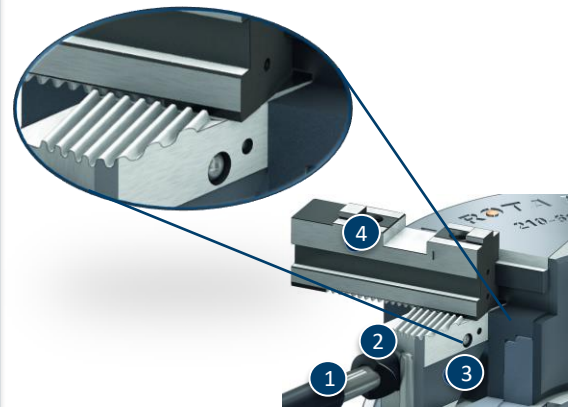
ROTA NCX

Correct jaw position



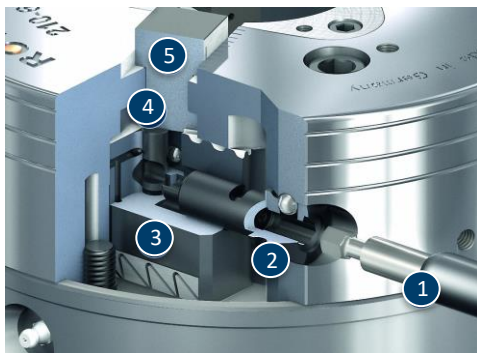
- 1 Jaw quick-change wrench
- 2 Release bolt
- 3 Wedge bar
- 4 Base jaw

Incorrect jaw position



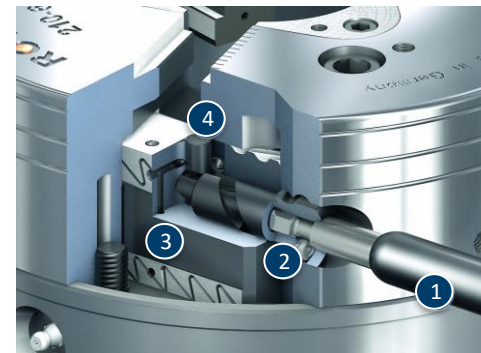
- 1 Jaw quick-change wrench
- 2 Release bolt
- 3 Wedge bar
- 4 Base jaw

Wedge bar in working position



- 1 Jaw quick-change wrench
- 2 Release bolt
- 3 Wedge bar
- 4 Indicator pin
- 5 Base jaw

Wedge bar in change position



- 1 Jaw quick-change wrench
- 2 Release bolt
- 3 Wedge bar
- 4 Indicator pin

ROTA NCX

Weight optimized chuck



Angled serrated base jaws SFGX



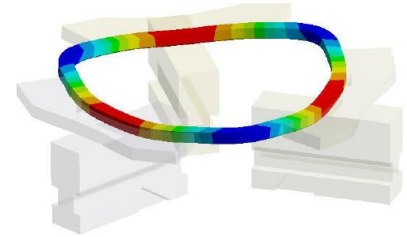
Variants ROTA NCX

Technical data	Max. RPM [min ⁻¹]	Max. clamping force [kN]	Max. actuating force [kN]	Stroke/jaw [mm]	Through-hole [mm]	Piston stroke [mm]
ROTA NCX 165-53	6000	50	33	3	53	13
ROTA NCX 210-66	5000	80	45	4.2	66	18
ROTA NCX 260-81	4500	128	68	5	81	21
ROTA NCX 315-106	3500	155	88	6.3	106	25

SCHUNK Services

Engineering

- Dimensioning of special plates designed to the manufacturing specifications
- Development of special solutions together with the customer
- FEM analysis for critical components



Testing

- Endurance tests with all new developments
- Abrasion checking
- Measurement of accuracy



Service

- Initial operation of customer's solution
- Inspection and maintenance
- Repairs



Superior Clamping and Gripping



© 2021 SCHUNK GmbH & Co. KG
schunk.com