



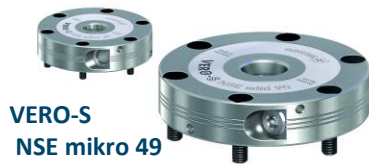
VERO-S NSR maxi Robot coupling

Stationary Workholding

Superior Clamping and Gripping



VERO-S overview



VERO-S
NSE mikro 49



VERO-S
NSE mini 90



VERO-S
NSE plus 99
NSE plus 138
NSE plus 176
NSE plus 100-75



VERO-S
NSA plus 120
NSA plus 160



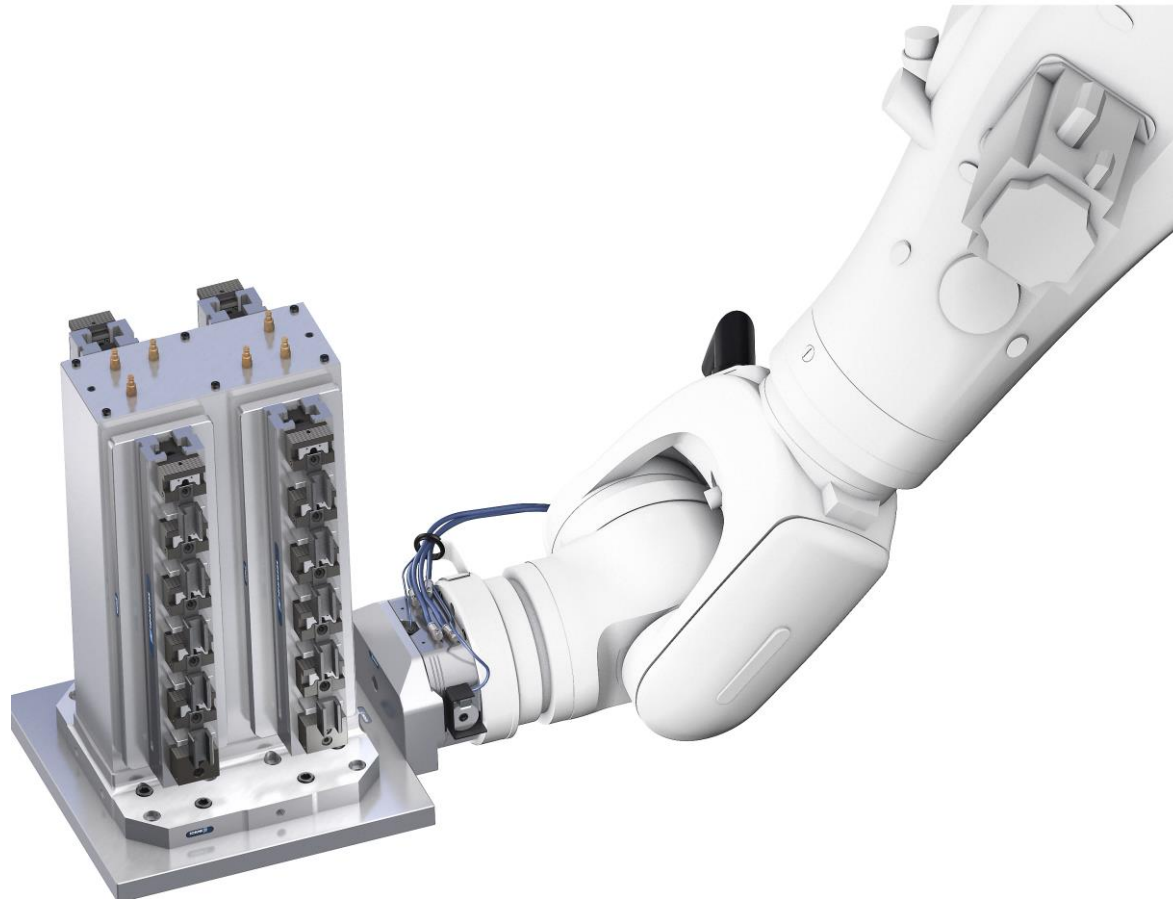
VERO-S
NSR 160
NSR maxi 220



VERO-S overview

Description	NSA plus 120	NSA plus 160	NSR mini 100	NSR 160	NSR maxi 220	NSE mikro 49	NSE mini 90	NSE plus 99	NSE plus 138	NSE plus 176
Pull-down force (kN)	3	5	1	4	12	0,15	0,5	4	7,5	9
Pull-down force with Turbo (kN)	9	15	4	15	50	0,4	1,5	15	25	40
Weight (Kg)	2,5	4	0,4	1,6	21	0,2	1	2,5	4,4	7,9
Lifting force (kN)	1	2	-	-	-	-	-	-	-	-
Module height (mm)	59	70	38	62	111	12	20	56	56	60
Clamping Pin type Ø	-	-	mini 10	SPA 40	SPA 80	mikro 10	mini 20	SPA 40	SPA 40	SPA 40
Holding force (kN)	50	75	-	-	-	3(M3) 5(M4)	15(M6) 25(M8)	35(M10) 50(M12) 75(M16)	35(M10) 50(M12) 75(M16)	35(M10) 50(M12) 75(M16)
Automated Machine Loading	Yes	Yes	Yes	Yes	Yes	Yes	Yes	Yes	Yes	Yes
Manual Machine Loading	-	-	-	-	-	Yes	Yes	Yes	Yes	Yes

VERO-S NSR maxi 220



VERO-S NSR maxi 220

Stronger than ever

The new robot coupling VERO-S NSR maxi 220 makes handling of heavy pallets (1,000 kg with pallet size 800 x 800 mm) easier and safer. Its high pull-in force of 75 kN creates an unusually rigid system, with an outstanding holding force which permits high torques.

Monitoring for maximum process reliability

The clamping slide position of the module is monitored by the inductive stroke measuring system. Combined with the pallet presence monitoring, this helps guarantee maximum process reliability. An integrated cleaning function for all contact surfaces minimizes the wear during the pallet change.

VERO-S NSR maxi 220

Technical Details

▪ Size	220
▪ Torque	4.000 Nm
▪ Holding force	200 kN
▪ Pull-in force	15...50 kN
▪ Repeat accuracy	< 0,02 mm

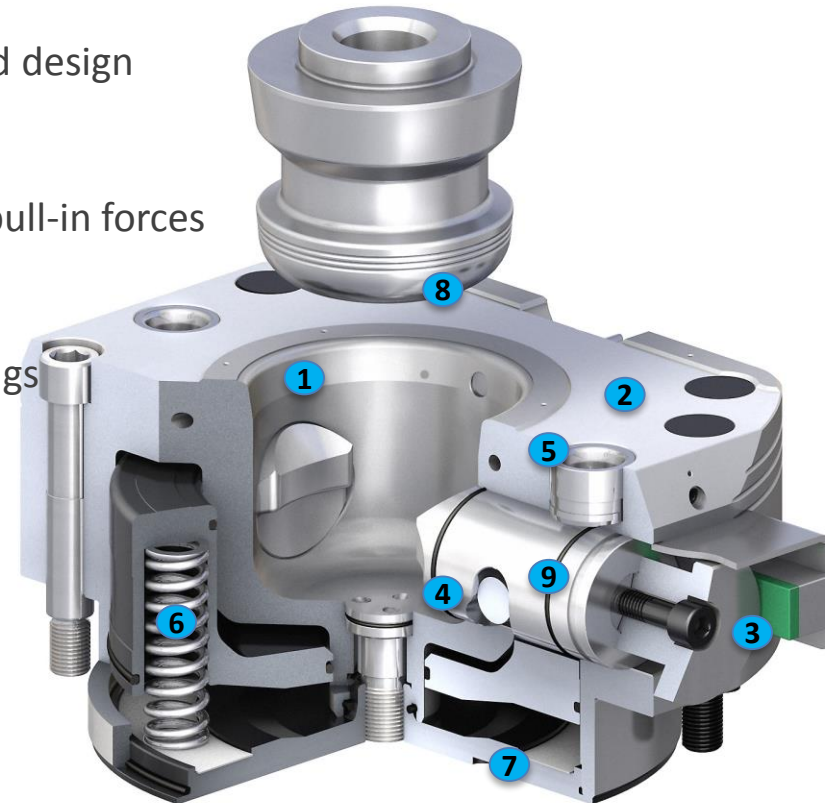
VERO-S NSR maxi 220

Product features

- maximum pull-in forces: up to 75 N
- Maximum transferable torque. 4;000 Nm
- module completely sealed
- form-fit locking with self-locking
- all parts in stainless, hardened steel
- air purge with cleaning function on all functional surfaces
- two options for securing it against twisting: via cylindrical pins or via the external slope (patented)
- no lubricated required

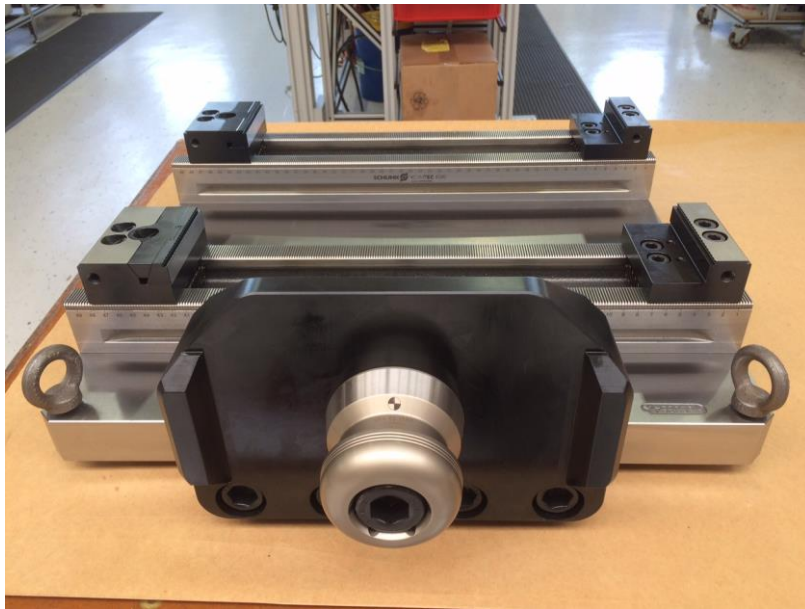
VERO-S NSR maxi 220

- 1 High-precision pin centerin mechanism
- 2 All components come in a corrosion-free, hardened design
- 3 Clamping slide position monitoring
- 4 Patented fast and clamping stroke for the highest pull-in forces
- 5 Torque pin for position orientation of the pallet
- 6 Corrosion-free, fatigue-resistant compression springs
- 7 Can be operated from the side or the floor
- 8 Entry radii on the clamping pin
- 9 Completely sealed system



VERO-S NSR maxi 220

Pallet adapter PKL maxi 220 with two KSM2 vises



VERO-S NSR maxi 220



Superior Clamping and Gripping



J. Lehmann

Jens Lehmann, deutsche Torwartlegende,
seit 2012 Markenbotschafter des
Familienunternehmens SCHUNK



www.schunk.com