

# Jaw Boxes SPK

Manual Lathe Chucks

Superior Clamping and Gripping



# Product overview



## Gripping Systems

## Clamping Technology



Chuck Jaws



Stationary Workholding



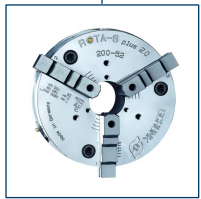
Lathe Chucks



Toolholders



Hydraulic Expansion Technology



Manual Lathe Chucks



Power Lathe Chucks with Jaw Quick-change System



Power Lathe Chucks with Through-hole



Power Lathe Chucks without Through-hole



Pneumatic Power Chucks



Steady Rests

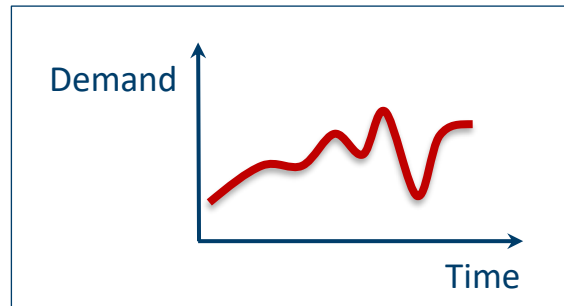
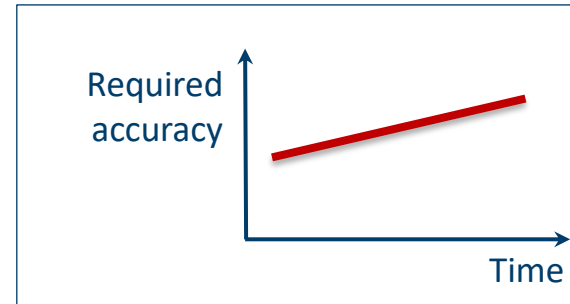
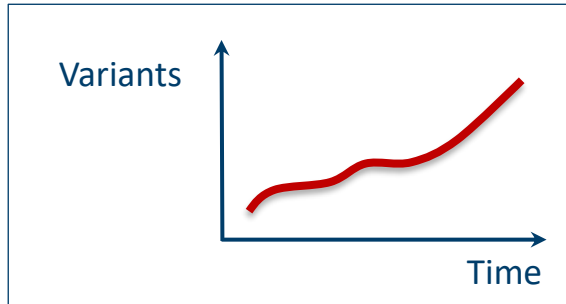


Quick-change Systems



Customized Solutions

# Challenges

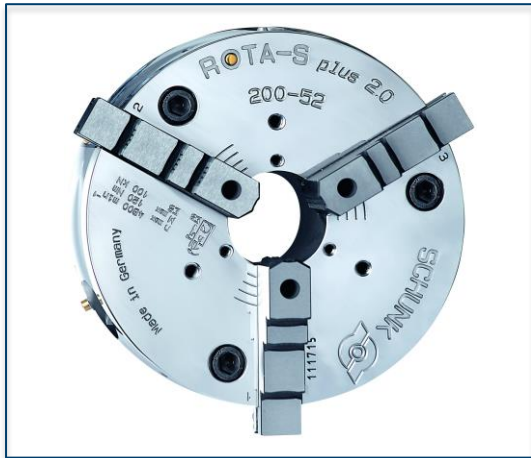


Flexibility and und set-up time optimization

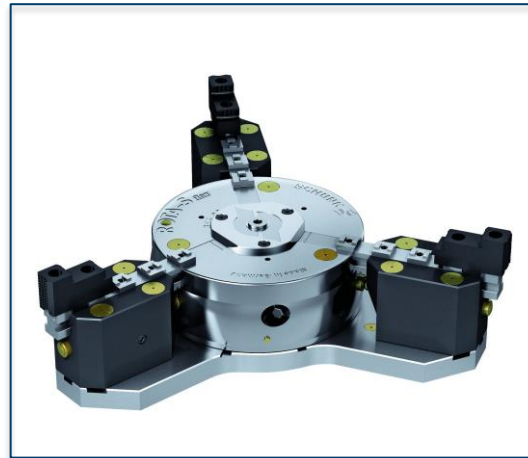
# ROTA overview

## Manual Lathe Chuck

ROTA-S plus 2.0



ROTA-S flex



SPK



# SPK

## Example of application



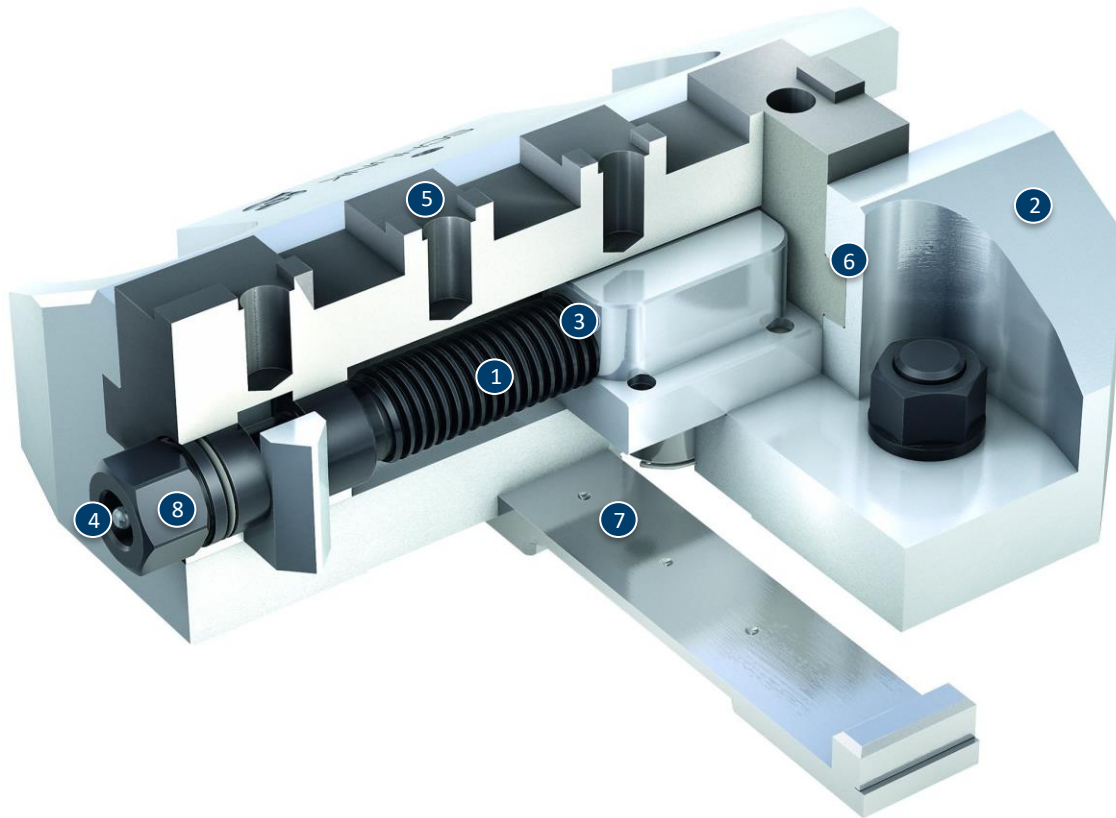
### Clamping device:

SPK 180 with hard stepped jaws on a ROTA NCR 1000 with intermediate plate.

### Features/Application:

Clamping of cubic workpieces on a lathe. Highest flexibility without time-consuming removal of the lathe chuck from the turning spindle.

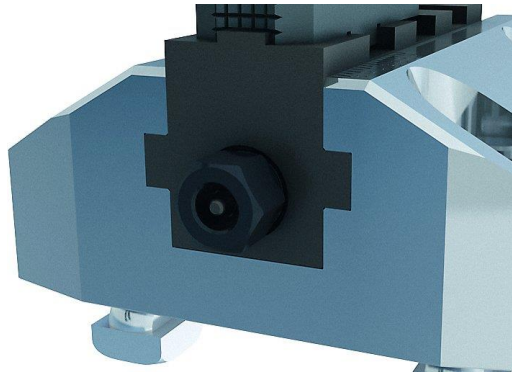
# SPK



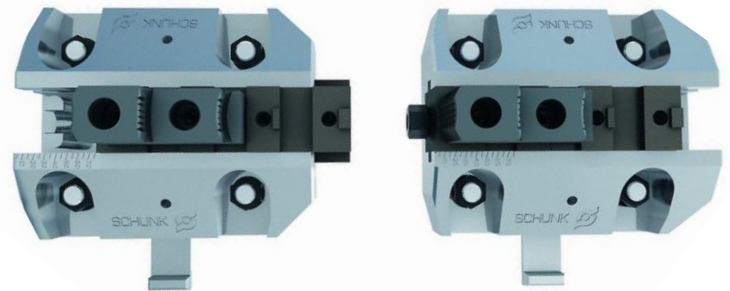
- 1 Spindle drive
- 2 Hardened and extremely rigid base body
- 3 Completely encapsulated spindle
- 4 Optimized lubrication system
- 5 Standard chuck jaw interface
- 6 Long jaw guidance
- 7 Crossbar
- 8 Operation via hexagon connection

# SPK

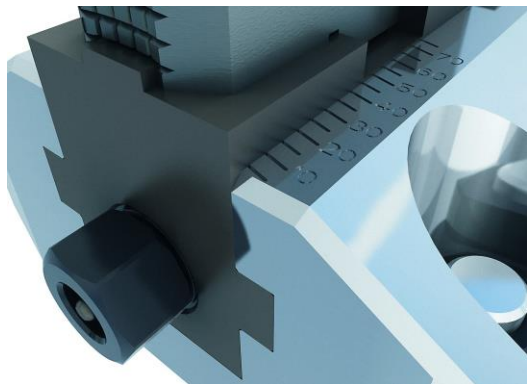
Spindle drive with integrated lubrication



Spindle completely encapsulated



Jaw stroke display



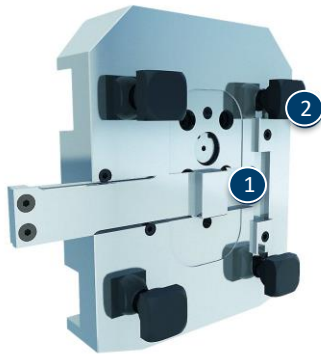
Adjustable gauge



① Adjustable gauge

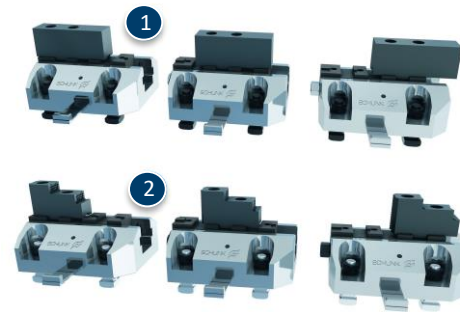
# SPK

## Bottom



- 1 Crossbar
- 2 Positioning stones

## Jaw connection



- 1 SPK 180
- 2 SPK 220/260

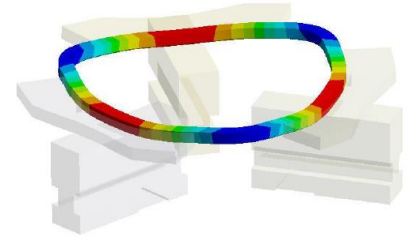
# Variants SPK

Technical data	Max. RPM [Nm]	Max. clamping force [kN]	Adjustment range of the chuck jaw [mm]
SPK 180	230	55	75
SPK 220	330	68	90
SPK 260	360	75	100

# SCHUNK Services

## Engineering

- Dimensioning of special plates designed to the manufacturing specifications
- Development of special solutions together with the customer
- FEM analysis for critical components



## Testing

- Endurance tests with all new developments
- Abrasion checking
- Measurement of accuracy



## Service

- Initial operation of customer's solution
- Inspection and maintenance
- Repairs



Superior Clamping and Gripping



© 2021 SCHUNK GmbH & Co. KG  
schunk.com