

# ZENTRICO THL plus

Steady Rests

Superior Clamping and Gripping



# Product overview



## Gripping Systems

## Clamping Technology



Chuck Jaws



Stationary Workholding



Lathe Chucks



Toolholders



Hydraulic Expansion Technology



Manual Lathe Chucks



Power Lathe Chucks with Jaw Quick-change System



Power Lathe Chucks with Through-hole



Power Lathe Chucks without Through-hole



Pneumatic Power Chucks



Steady Rests



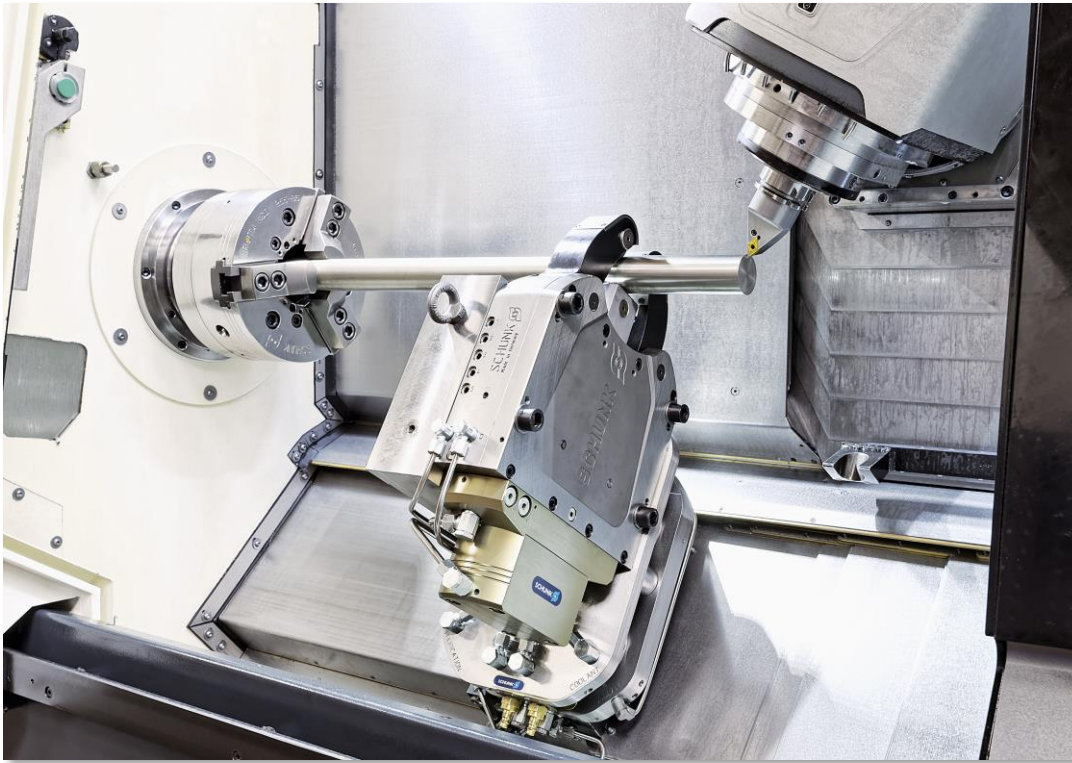
Quick-change Systems



Customized Solutions

# ZENTRICO

## Example of application



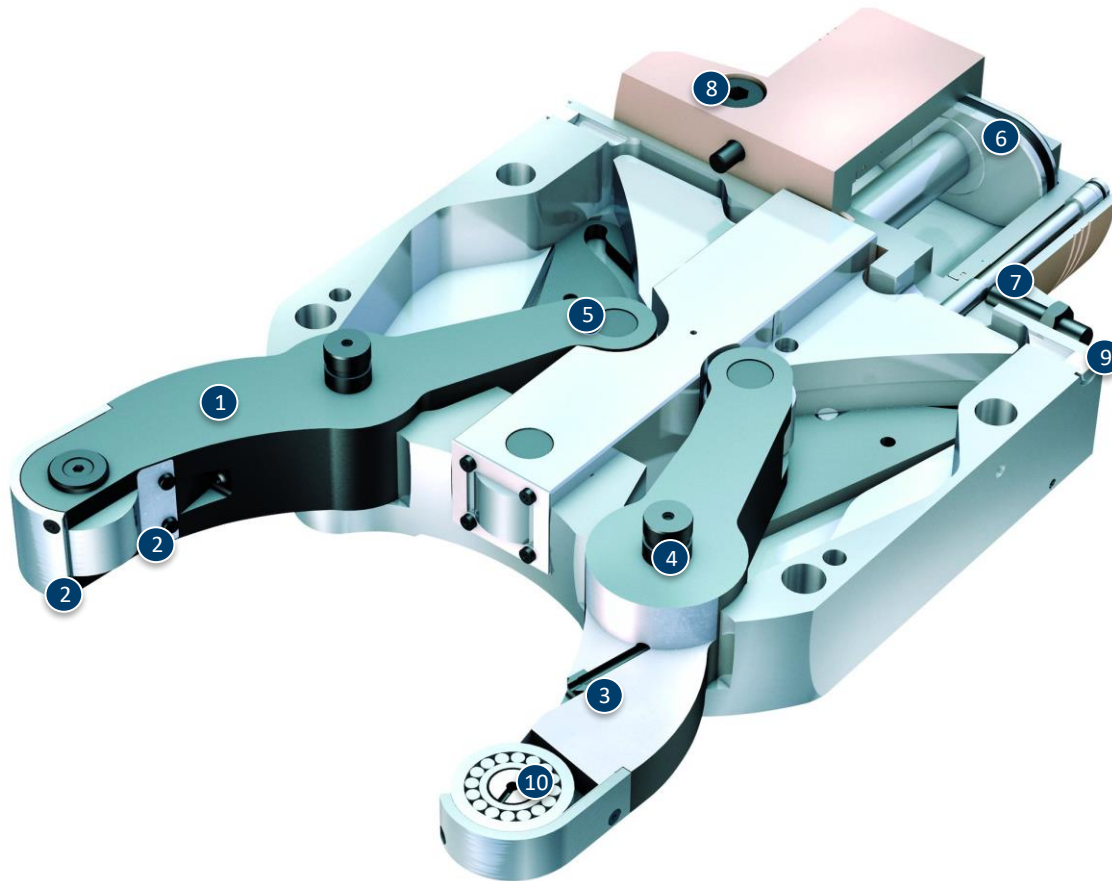
### Clamping device:

THL plus 310 with quick-change system on the basis of VERO-S.

### Features/Application:

Support of long, cylindrical workpieces on lathes. Optimum utilization of the machine room and highest flexibility thanks to the quick-change system.

# ZENTRICO THL plus



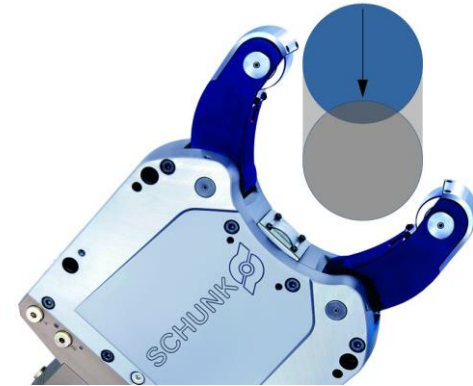
- ① Lever drive
- ② Sealed with double, extremely robust chip protection
- ③ Roller rinsing as standard
- ④ Stable lever bearing
- ⑤ Swing-out lever arm
- ⑥ Oval piston cylinder
- ⑦ Standard version ready for installation of piston position monitoring
- ⑧ Safety check valve
- ⑨ Air purge connection
- ⑩ Roller rinsing

# ZENTRICO THL plus

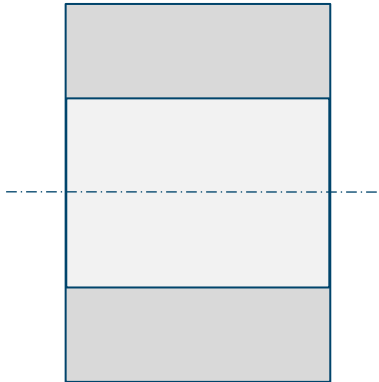
ZENTRICO THL plus with side mounted cylinder



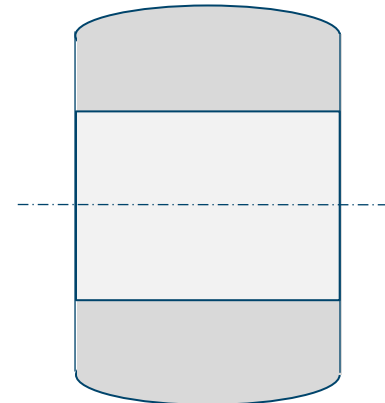
Swing-out lever arm



Cylindric rollers

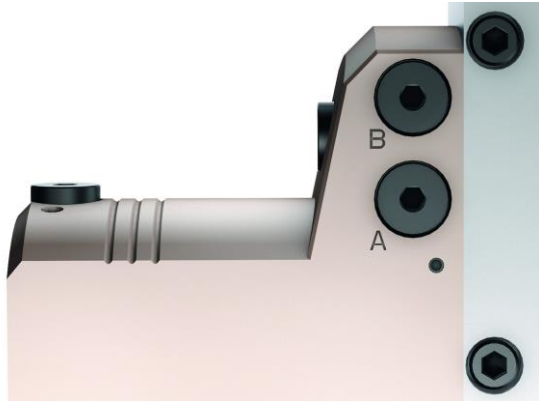


Spherical rollers



# ZENTRICO THL plus

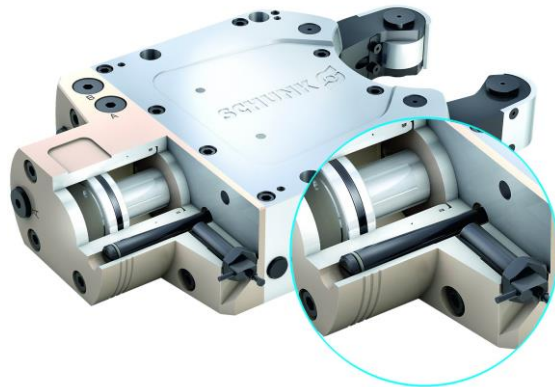
Lateral hydraulic connections



Central lubrication



Stroke measuring system



Distance monitoring

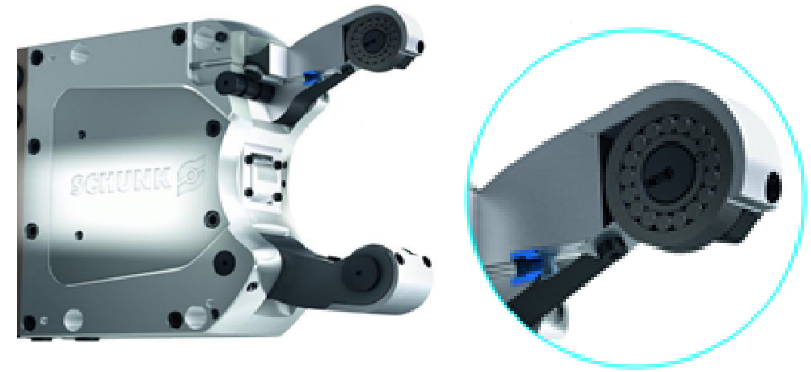


# ZENTRICO THL plus

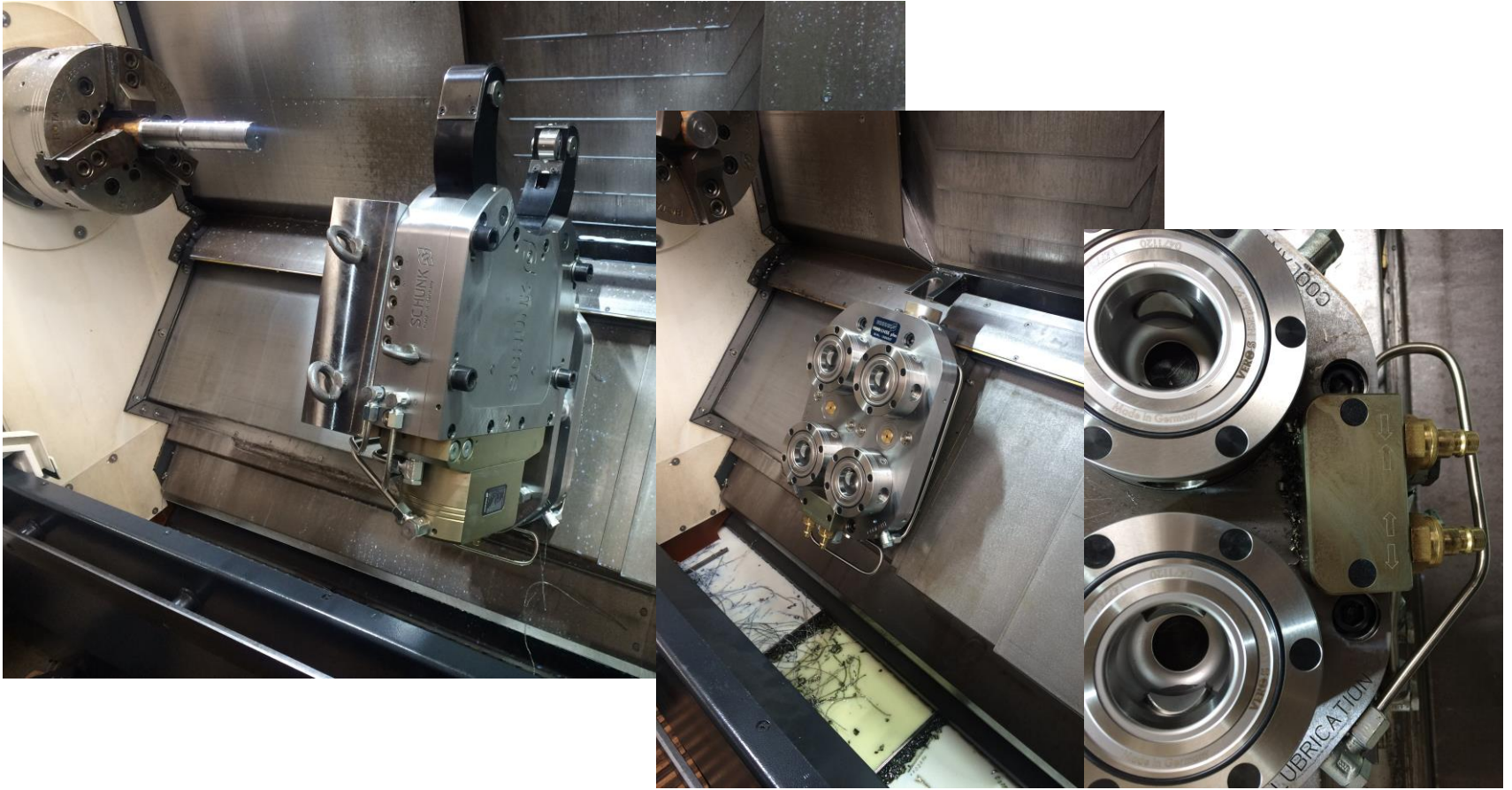
Roller fine adjustment



Roller rinsing



# Steady rest quick change system



# Variants ZENTRICO THL plus

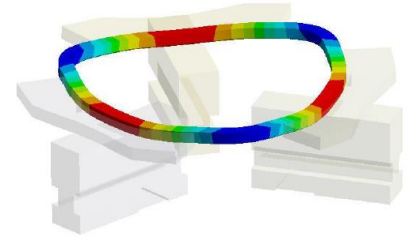
Technische Daten	Clamping range [min <sup>-1</sup> ]	Operating pressure [bar]	Max. clamping force [kN]	Centering accuracy [mm]	Repeat accuracy [mm]
THL plus 100	4-66	6-50	1	< 0.02	< 0.005
THL-A plus 100	4-52	6-50	1	< 0.02	< 0.005
THL plus 200	8-101	8-60	3.5	< 0.02	< 0.005
THL-A plus 200	8-80	8-60	3.5	< 0.02	< 0.005
THL plus 300	12-152	8-60	10	< 0.04	< 0.007
THL-A plus 300	12-130	8-60	10	< 0.04	< 0.007
THL plus 310	20-165	8-60	10	< 0.04	< 0.007
THL-A plus 310	20-150	8-60	10	< 0.04	< 0.007
THL plus 320	50-220	8-60	10	< 0.04	< 0.007
THL plus 400	35-245	8-60	15	< 0.05	< 0.01
THL-A plus 400	35-220	8-60	15	< 0.05	< 0.01
THL plus 500	50-310	8-60	20	< 0.06	< 0.01
THL-A plus 500	50-268	8-60	20	< 0.06	< 0.01
THL plus 510	85-350	8-60	20	< 0.06	< 0.01
THL plus 600	125-460	8-60	25	< 0.06	< 0.005

Size 300, 310, 400, 500, 510 also available with side mounted cylinder.

# SCHUNK Services

## Engineering

- Dimensioning of special plates designed to the manufacturing specifications
- Development of special solutions together with the customer
- FEM analysis for critical components



## Testing

- Endurance tests with all new developments
- Abrasion checking
- Measurement of accuracy



## Service

- Initial operation of customer's solution
- Inspection and maintenance
- Repairs



Superior Clamping and Gripping



© 2021 SCHUNK GmbH & Co. KG  
schunk.com