



SCHUNK KONTEC

Tombstones

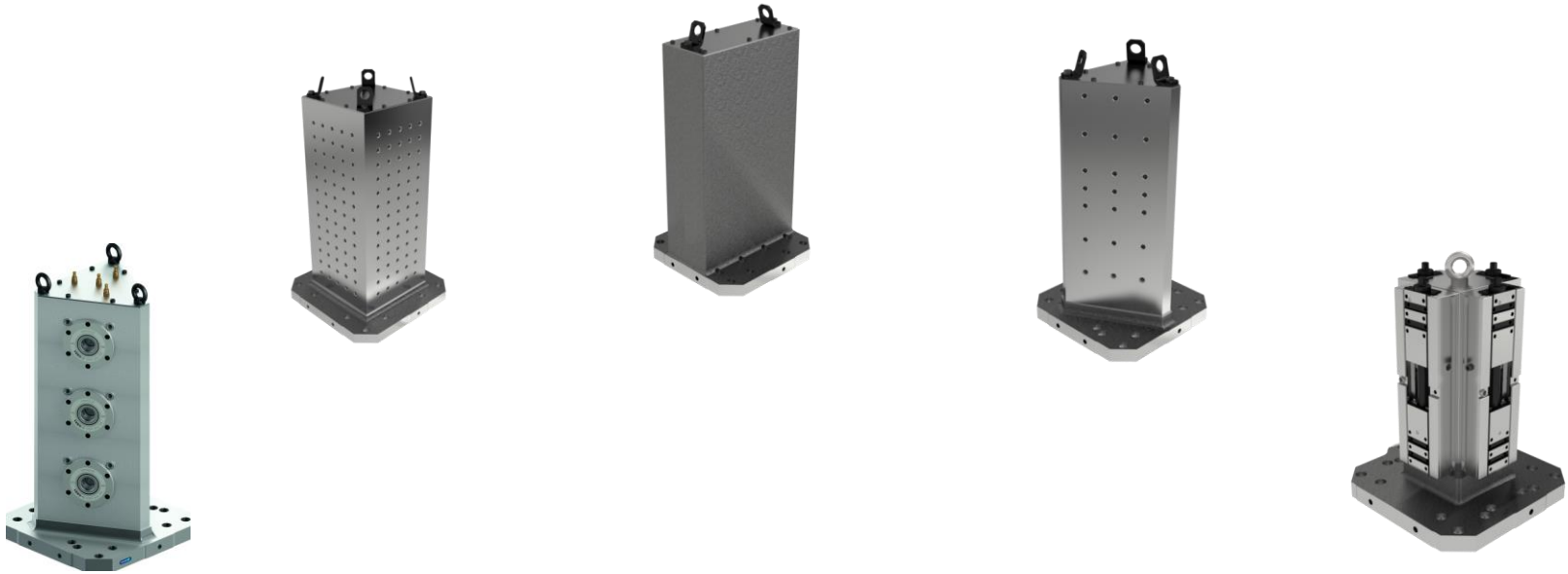
Superior Clamping and Gripping



Range of Tombstones

New

- 60 different variants in 5 different designs
- Different base plates with 400x400 mm and 500x500 mm
- For all common machine tables



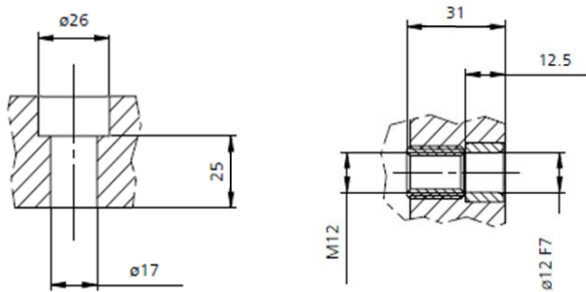
Range of Tombstones

- Short delivery times
- Hole pattern 50 mm
- Reduced hole pattern for KONTEC clamping devices
- Pallet sizes \varnothing 260, \varnothing 320, 300x300 , 400x400 and 500x500 mm
- High rigidity and good vibration damping due to stable hollow body shape
- Monoblock design (= base plate and clamping tower out of 1 piece)
- Fine milled clamping area
- (exactly positioning of workpiece and clamping vice
- Hole pattern with hardened and galvanized bushes.
- Reduced interference contours due to different tower shapes.
- Corss and octagon towers
- Hight from 148 to 1000 mm

Modular design

- Interface (DIN 55201 und JIS 6337-1980 Edge Locator)
- Tombstones
 - Double angle
 - Triangle
 - Cross
 - Octagon
 - Cube
- Devices for Tombstones
 - KSO-4V
 - KSG-2V
 - KSG-4V
 - KSC-F-4V
 - KSC-D-4V
 - KSM-4V
 - KSM2

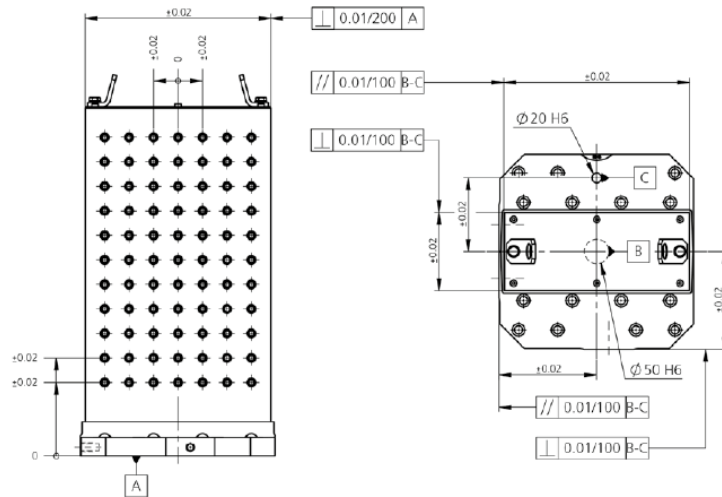
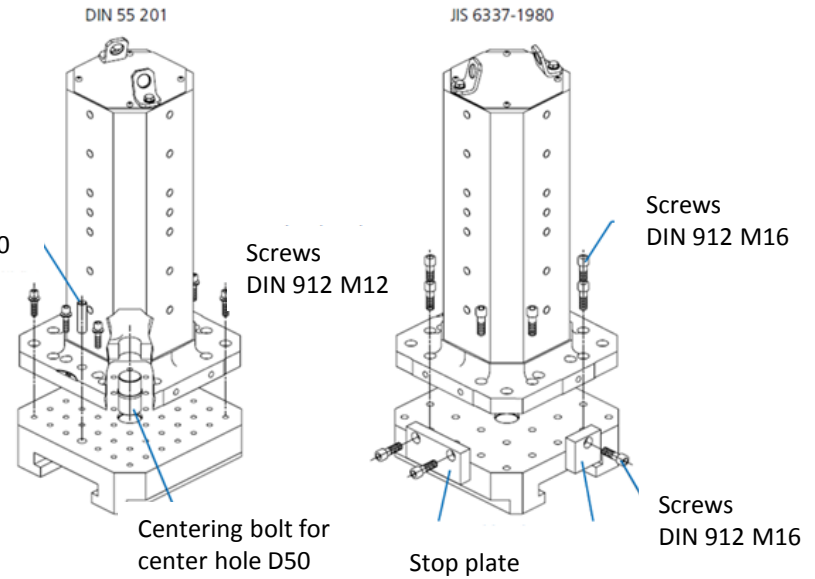
Interface



Exactly positioning due to hardened and galvanized bushes.

Centering bolt for directional drilling D20

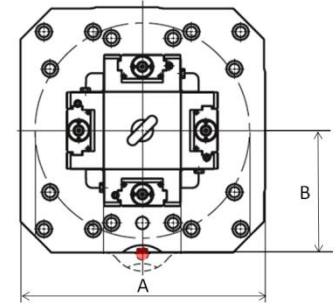
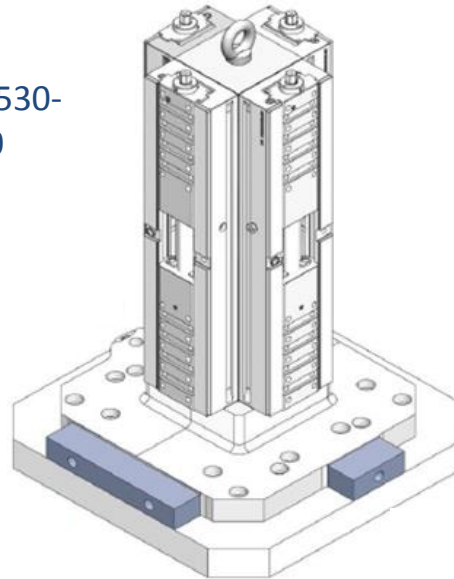
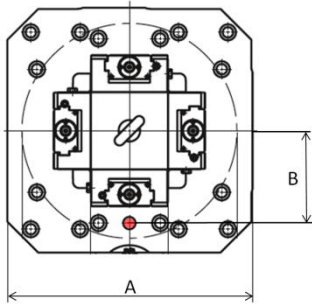
Pallet sizes 400x400 mm and 500x500 mm nach DIN 55 201 und JIS 6337-1980, special machine interface on request.



Shape and positioning tolerances for all designs. All clamping areas are fine milled.

Range of Tombstones

KSC-D 125 L-530-
4V / 500x500
1352172



Base plate
A=400x400mm with
positioning bolt
B=150mm

Easy mounting of the tombstones by distance plates and Edge Locator-stops (System JIS 6337-1980)
Exactly positioning by positioning areas

Assembly of Clamping Vises

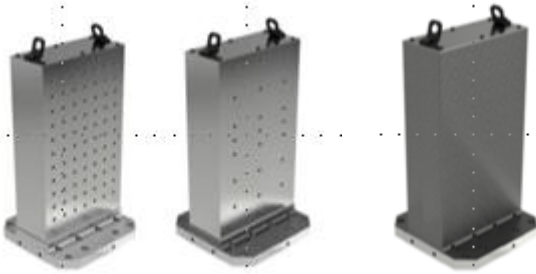


Easy assembly of all clamping devices with fitting holes.
Multi Clamping, Centric Clamping and single acting vises

→ Positioning by pass screw $\varnothing 12/M12$

Tombstones

Double Angle



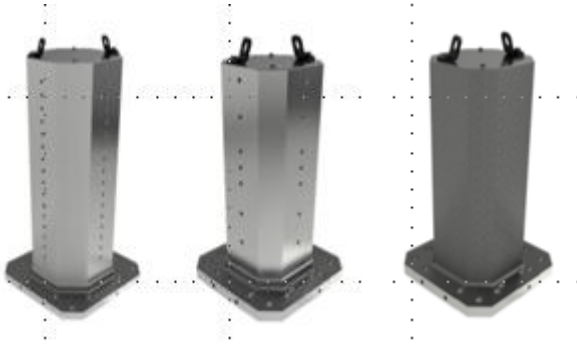
Triangle



Cube



Cross



Ocatagon



New

Double Angle

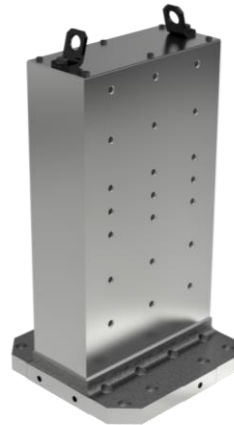
Hole pattern 50mm

Base plate 400x400mm
Hight = 710mm
Base plate 500x500mm
Hight = 710 + 1000mm



Reduced hole pattern

Base plate
400x400 + 500x500mm
with Hight = 710mm



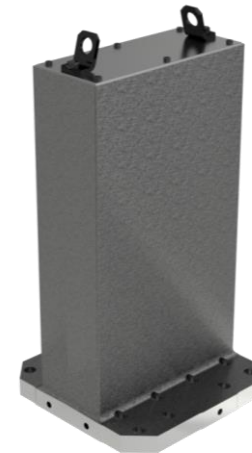
assembled

Base plate
400x400 + 500x500mm
with Hight = 710mm



Rough Clamping Area

Base plate 400x400mm
with Hight = 710mm
Base plate 500x500mm
Hight = 710 + 1000mm



Triangle

Hole pattern 50mm

Base plate 400x400mm
with Hight = 710mm
Base plate 500x500mm
Hight = 710 + 1000mm



Reduced hole pattern

Base plate
400x400 + 500x500mm
with Hight = 710mm



assembled

Base plate
400x400 + 500x500mm
with Hight = 710mm



Rough Clamping Area

Base plate 400x400mm
with Hight = 710mm
Base plate 500x500mm
Hight = 710 + 1000mm



Cross

Hole pattern 50mm

Base plate 500x500mm
with Hight = 1000mm



Reduced hole pattern

Base plate 400x400mm
with Hight = 710
Base plate 500x500mm
with Hight = 710mm

New



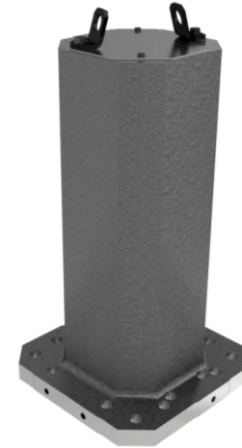
assembled

Base plate 400x400mm
with Hight = 710mm
Base plate 500x500mm
with Hight = 710mm



Rough Clamping Area

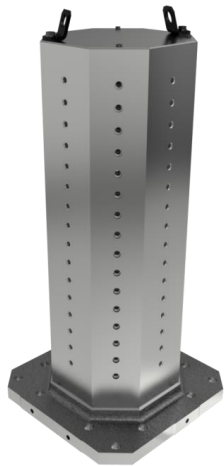
Base plate 400x400mm
with Hight 710mm
Base plate 500x500mm
Hight = 710 + 1000mm



Octagon

Hole pattern 50mm

Base plate 500x500mm
with Hight = 1000mm



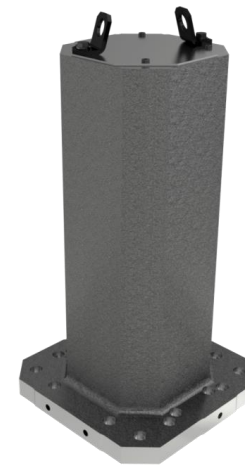
Reduced hole pattern

Base plate 400x400mm
with Hight = 710mm
Base plate 500x500mm
with Hight = 710mm



Rough Clamping Area

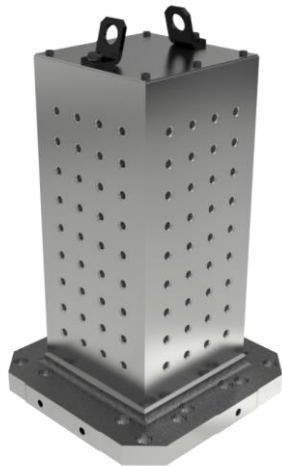
Base plate 400x400mm
with Hight 710mm
Base plate 500x500mm
Hight = 710 + 1000mm



Cube

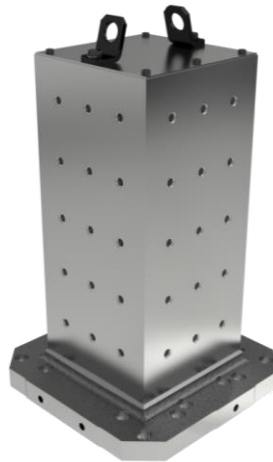
Hole pattern 50mm

Base plate 400x400mm
with Hight = 600mm
Base plate 500x500mm
Hight = 800 + 1000mm



Reduced hole pattern

Base plate 400x400mm
with Hight = 600mm
Base plate 500x500mm
Hight = 800 + 1000mm



Rough Clamping Area

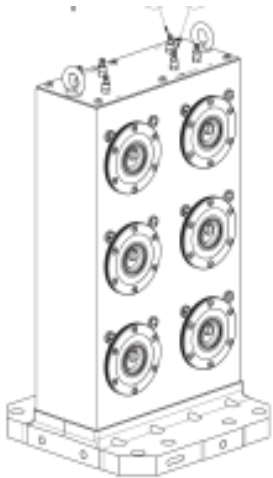
Base plate 400x400mm
with Hight = 600mm
Base plate 500x500mm
Hight = 800 + 1000mm



VERO-S

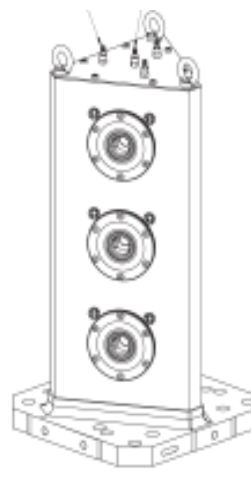
Double Angle
12 x VERO-S NSE3

Base plate
400x400mm
500x500mm
with Hight = 710mm



Triangle
9 x VERO-S NSE3

Base plate
400x400mm
500x500mm
with Hight = 710mm



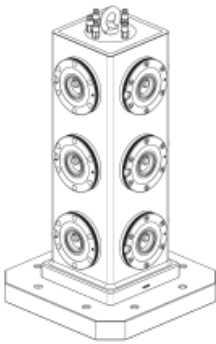
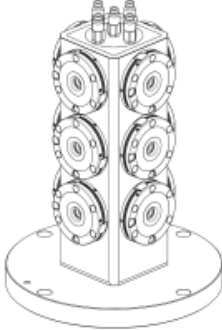
Cross
12 x VERO-S

Base plate
400x400mm
500x500mm
with Hight = 710mm



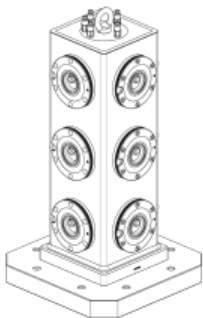
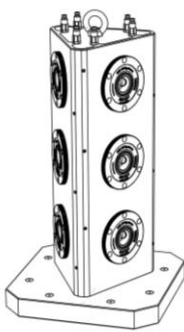
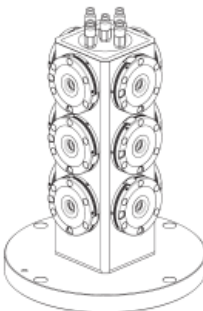
Hybrid - VERO-S

Hybrid – Mineral Casting Tombstones and steel outer skin

	Cube	Cube
	12-fold VERO-S	12-fold VERO-S
Clamping	NSE plus 138	NSE mini
Hight	680	380
		

Hybrid - VERO-S

Hybrid – Mineral Casting Tombstone and aluminium outer skin

	Cube	Triangle	Cube
	12-fold VERO-S	9-fold VERO-S	12-fold VERO-S
Clamping	NSE plus 138	NSE plus 138	NSE mini
Hight	680	726	380
			

Clamping vises for Tombstones

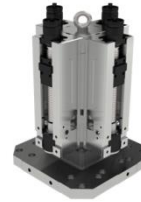
KSO-4V



KSG-2V

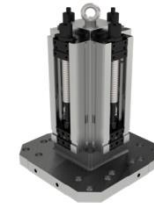


KSG-4V



New

KSC-F-4V



New

KSC-D-4V



New



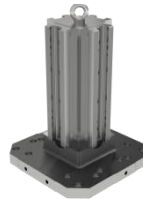
New

KSM-4V



New

KSM2-4V



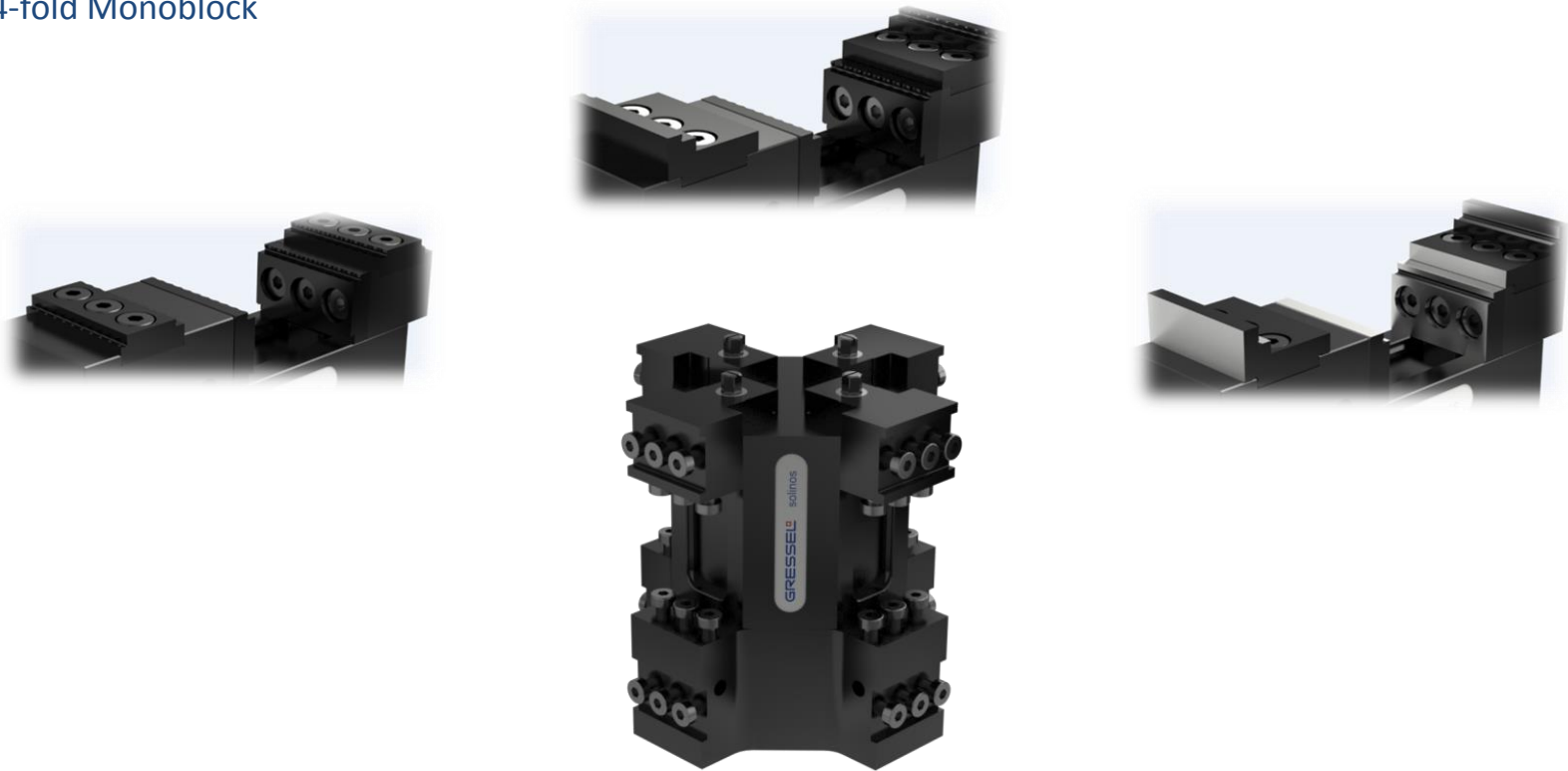
New



New

KONTEC KSO

KSO 40-4V-IT
4-fold Monoblock



KONTEC KSO

KSO 65-4V-IT
4-fold Monoblock

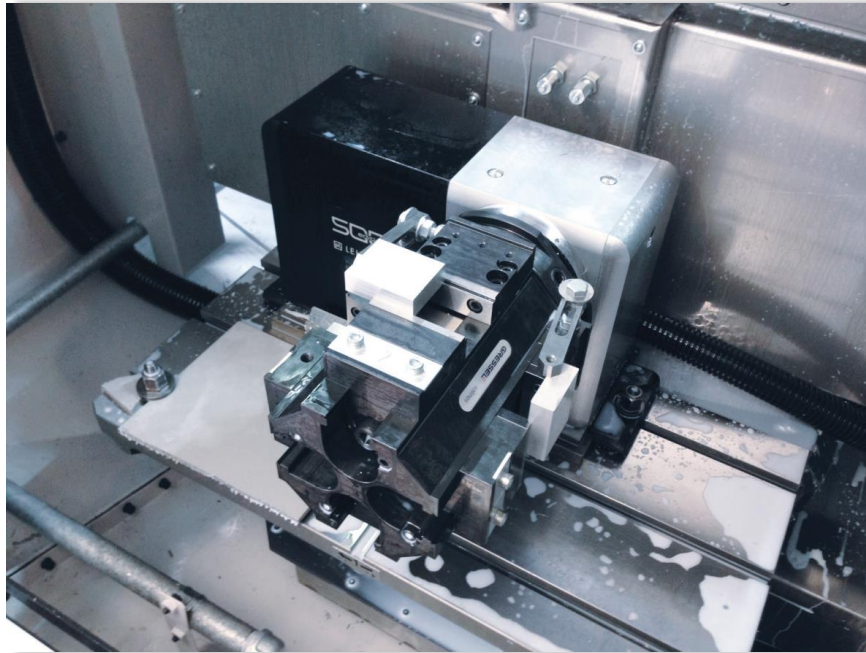


KONTEC KSO

KSO 65-4V-IT

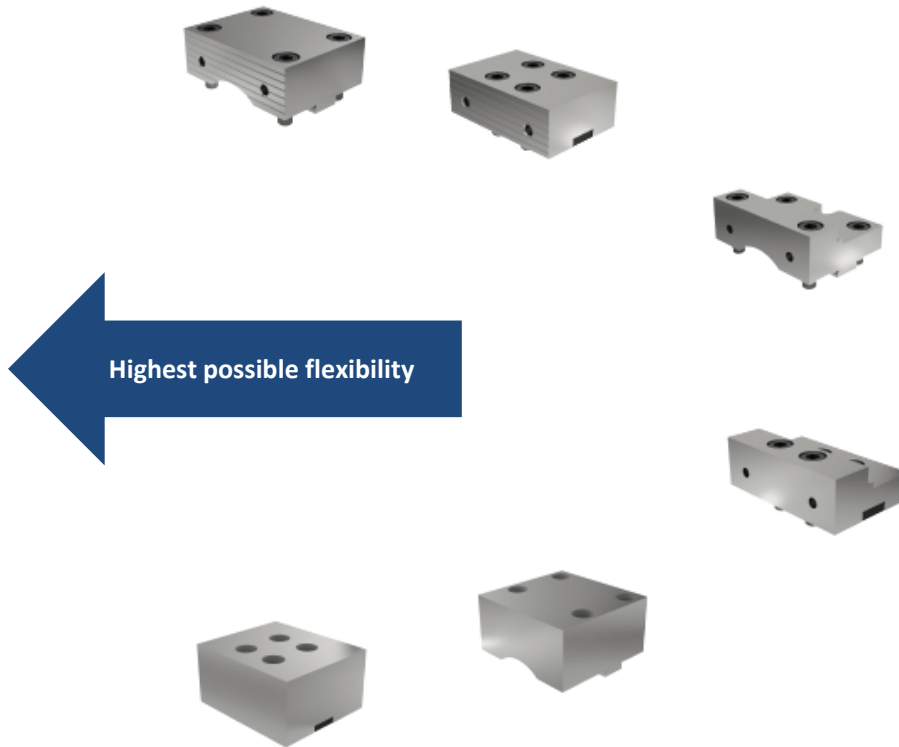
4-fold Monoblock for multi clamping

On a Auf LEHMANN rotary table



KONTEC KSG-2V

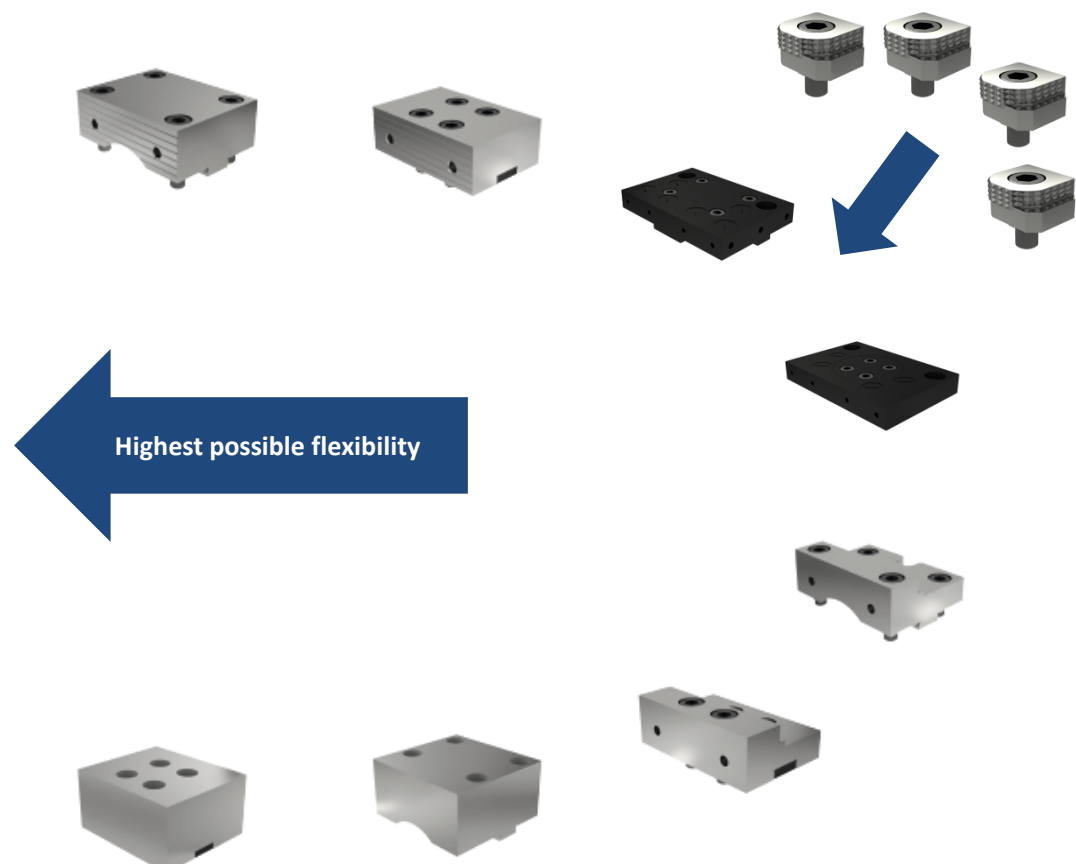
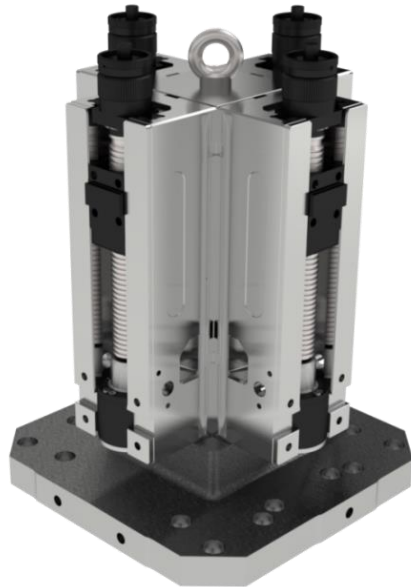
KSG 100 | 125-2V
Vertical with 2x KSG



KONTEC KSG-4V

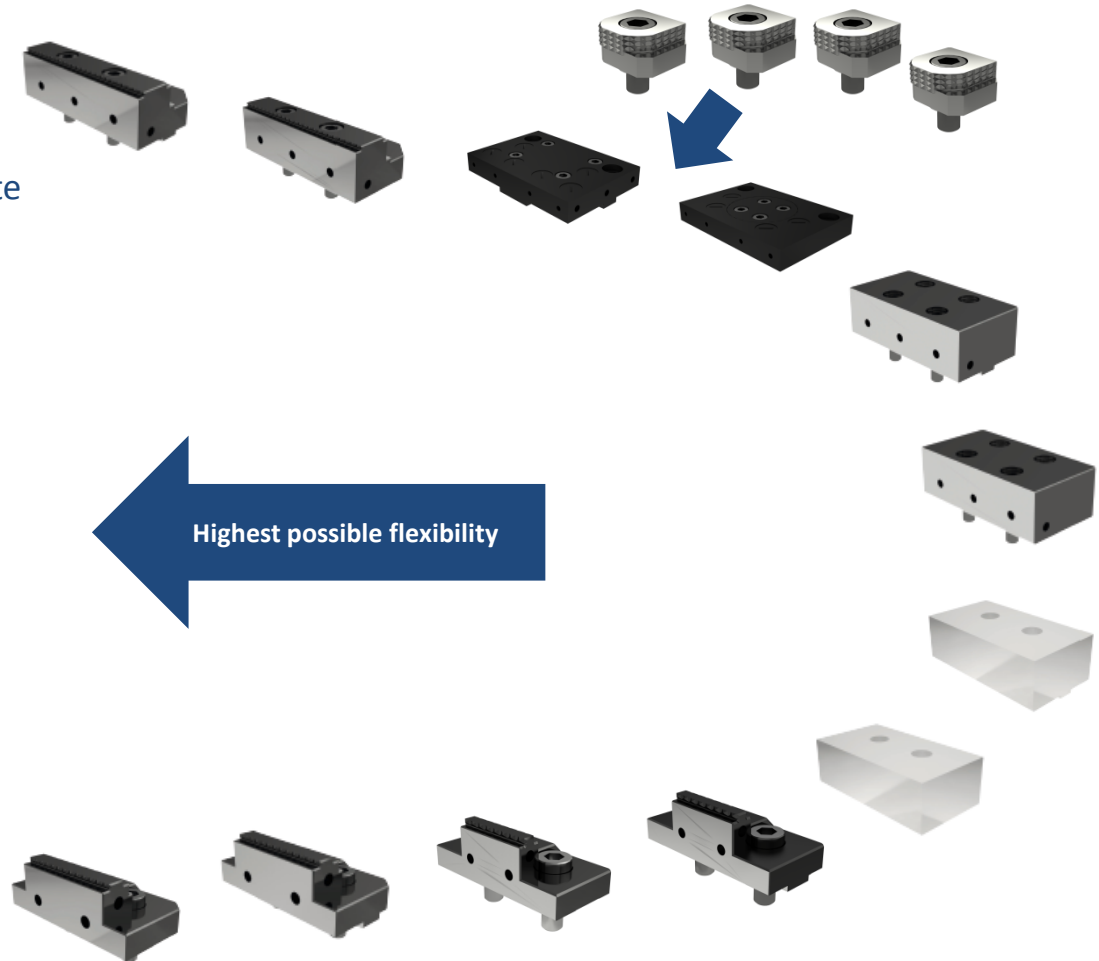
New

KSG 125L 390-4V
400x400 und 500x500 mm Base plate
without system jaws



KONTEC KSC-F-4V

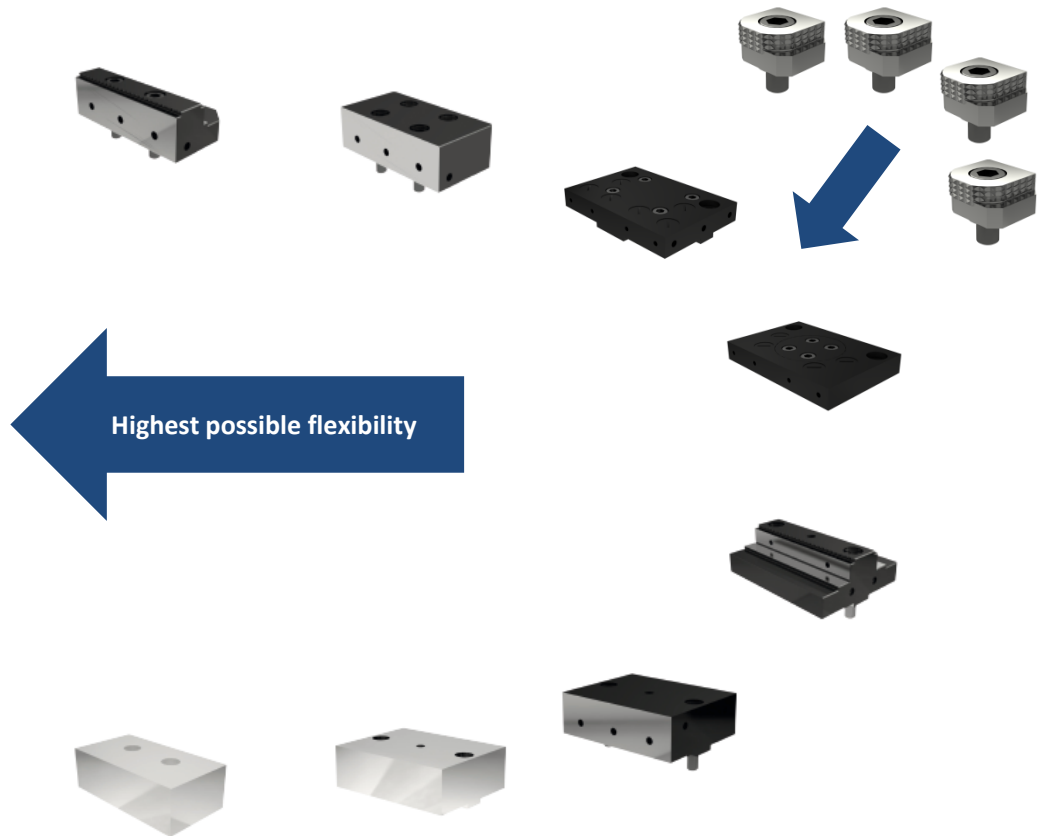
KSC-F 125L 390-4V
400x400 und 500x500 mm Base plate
without system jaws



Highest possible flexibility

KONTEC KSC-D-4V

KSC-D 80 L 300-4V
300x300 mm Base plate
without system jaws



KONTEC KSC-D

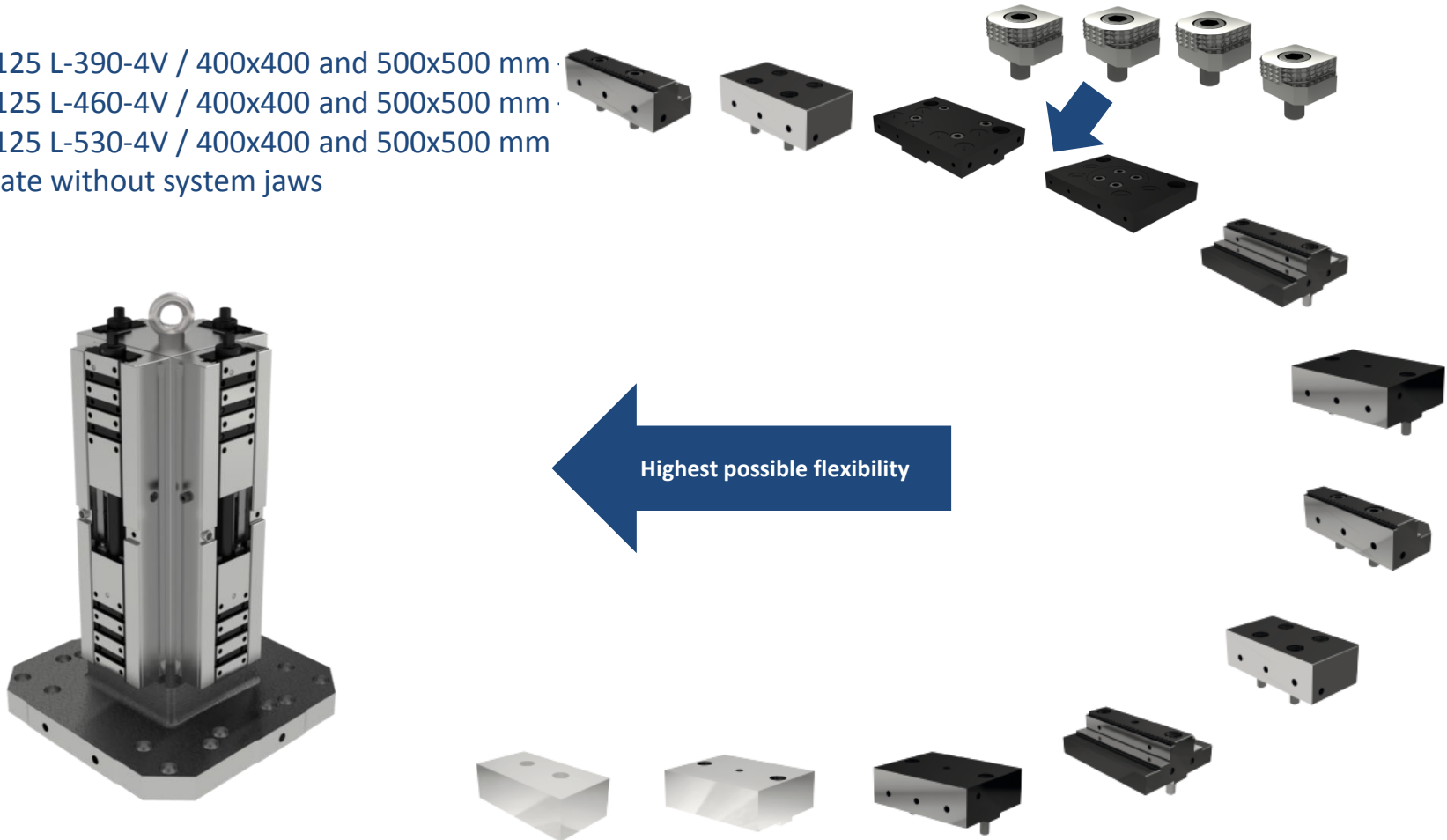
KSC-D 80 L 300-4V D260
without system jaws
Alternative with reduced hole pattern



KONTEC KSC-D-4

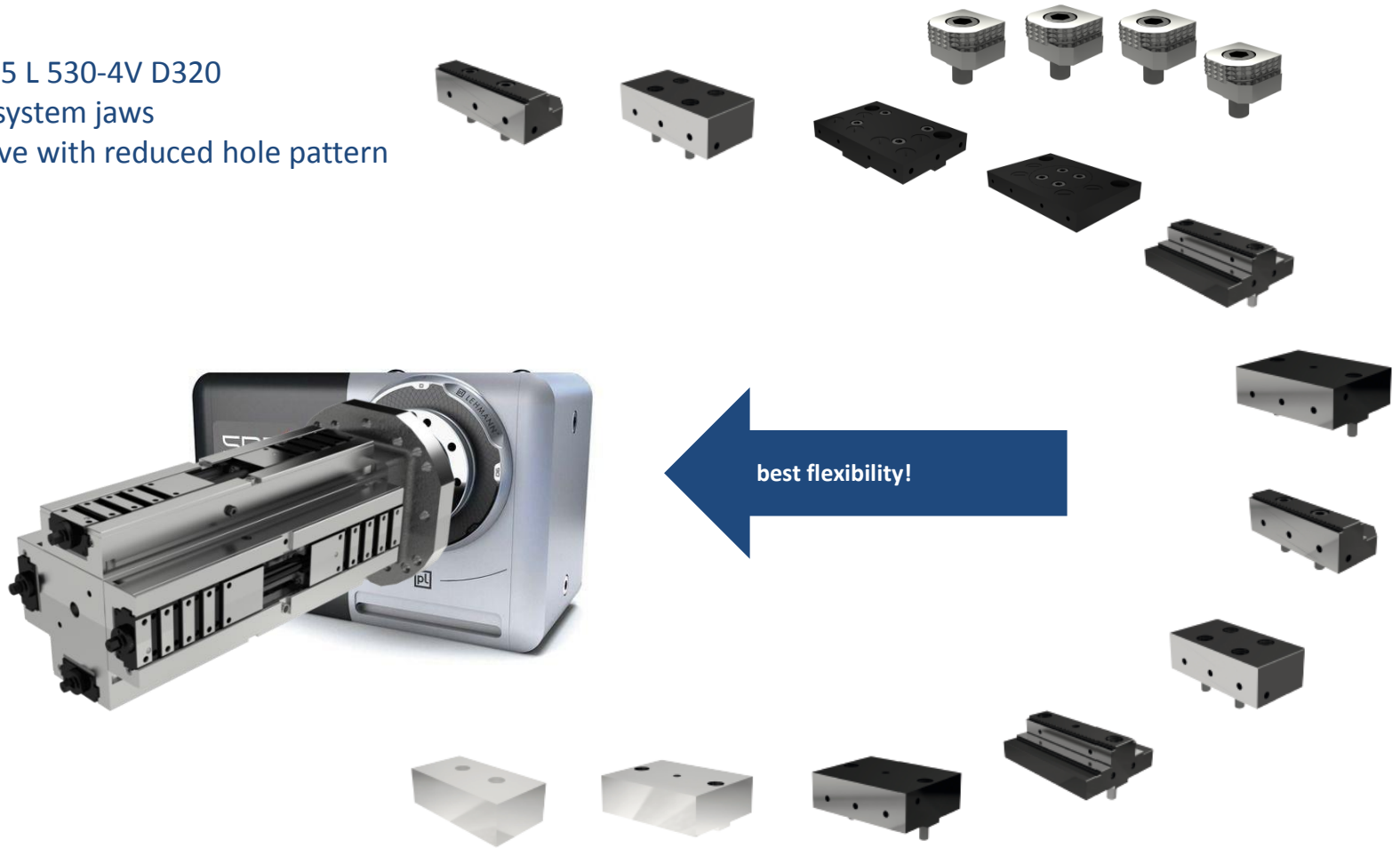
New

KSC-D 125 L-390-4V / 400x400 and 500x500 mm
KSC-D 125 L-460-4V / 400x400 and 500x500 mm
KSC-D 125 L-530-4V / 400x400 and 500x500 mm
Base plate without system jaws



KONTEC KSC-D-4V

KSC-D 125 L 530-4V D320
without system jaws
Alternative with reduced hole pattern

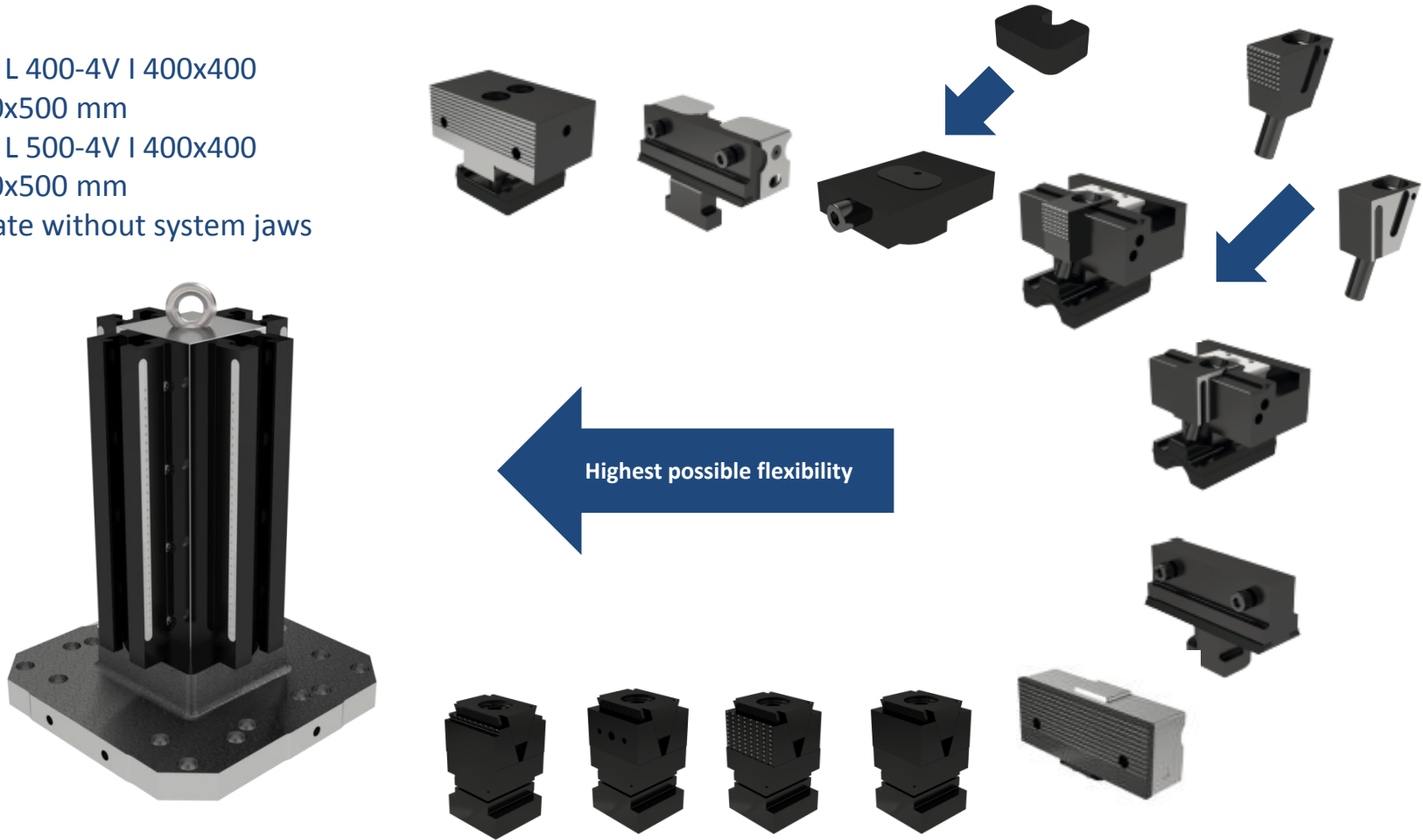


KONTEC KSM

KSM 90 L 400-4V I 400x400
and 500x500 mm

KSM 90 L 500-4V I 400x400
and 500x500 mm

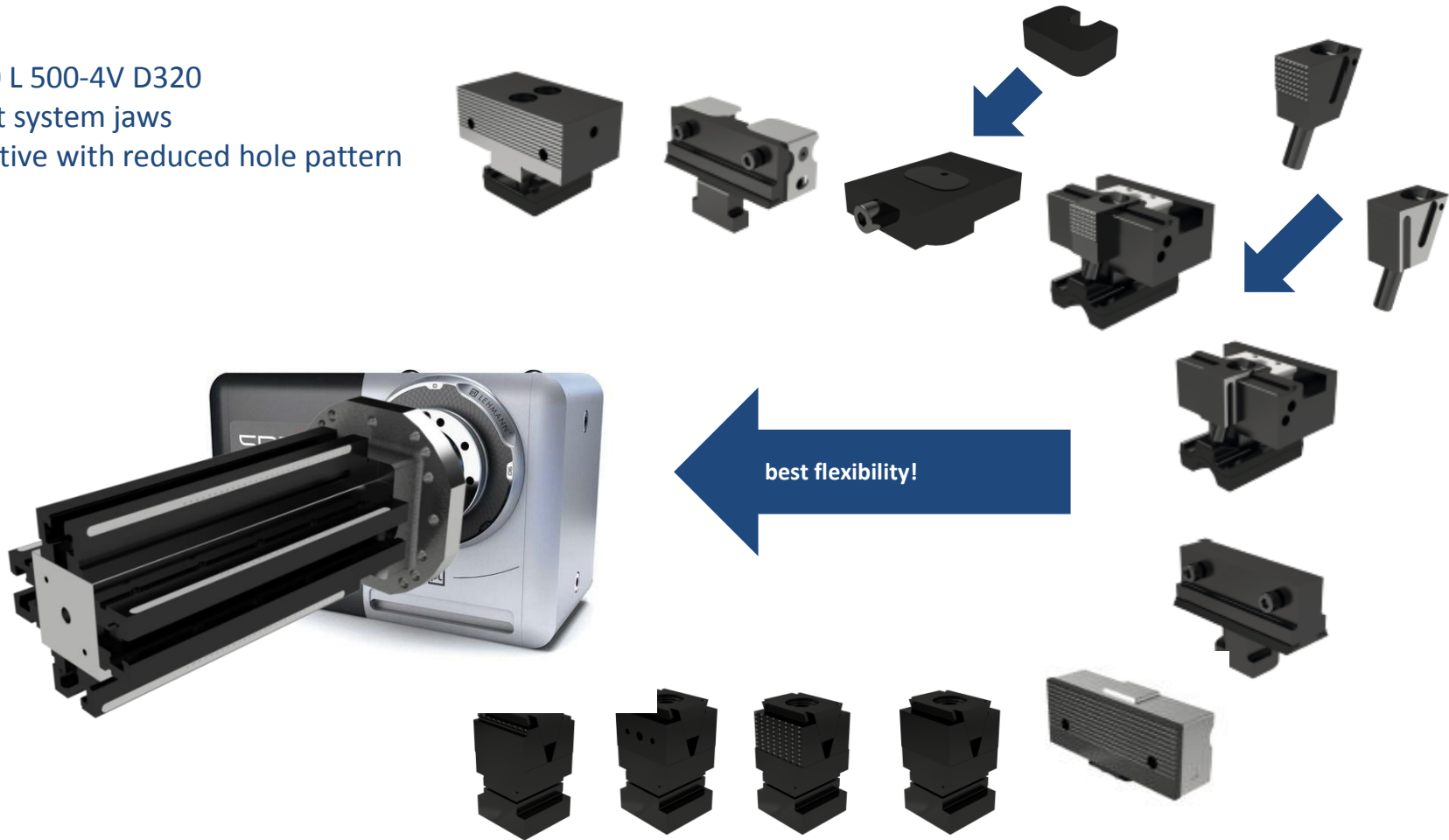
Base plate without system jaws



KONTEC KSM

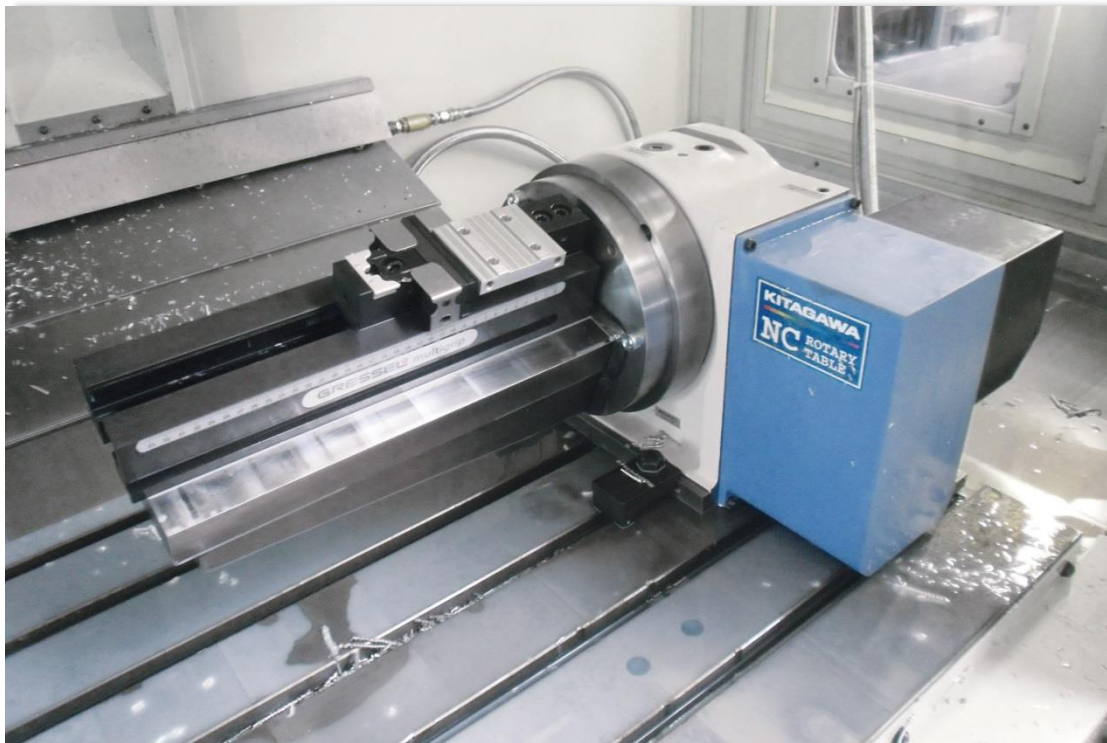
New

KSM 90 L 500-4V D320
without system jaws
Alternative with reduced hole pattern



KONTEC KSM

KSM 90-400 on a rotary table for a perfect 3-side machining



KONTEC KSM2

KSM2 L 400-4V I 400x400 and 500x500
KSM2 L 500-4V I 400x400 and 500x500
Base plate without system jaws



KONTEC KSM2

KSM2 L 500-4V D320
without system jaws
Alternative with reduced hole pattern



Horizontal Machining Centers

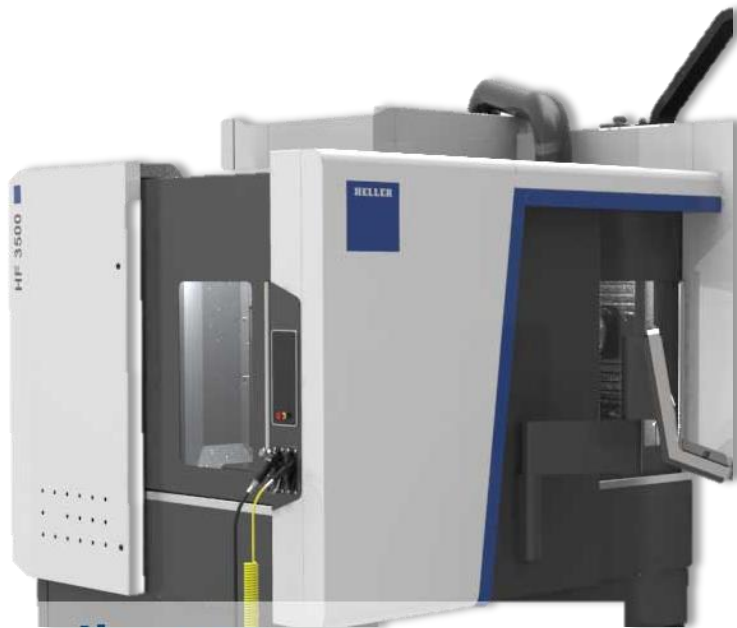
DMG MORI



<https://de.dmgmori.com>

Horizontal Machining Centers

HELLER



<https://www.heller.biz>

Horizontal Machining Centers

Matsuura



<https://www.matsuura.de>

Horizontal Machining Centers

OKUMA



<https://www.okuma.eu/de>

Horizontal Machining Centers

MAZAK



<https://www.mazakeu.de>

Horizontal Machining Centers

HURCO



<https://www.hurco.de>

Horizontal Machining Centers

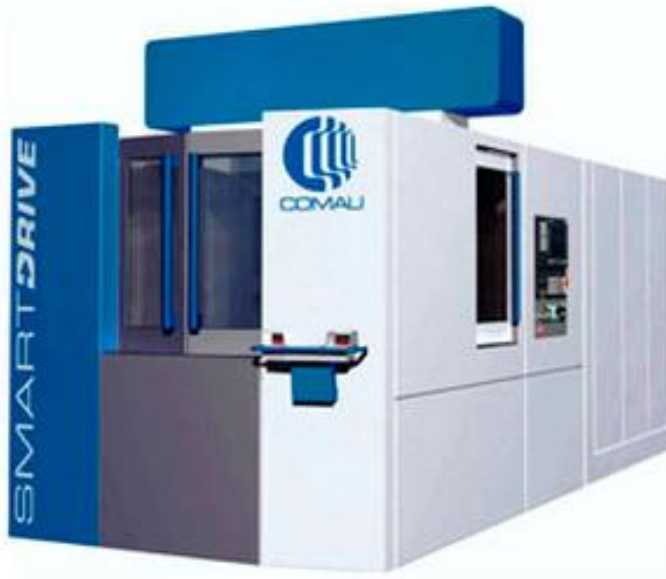
MAKINO



<https://www.makino.com>

Horizontal Machining Centers

COMAU



<https://www.comau.com>

Horizontal Machining Centers

GROB



<https://www.grobgroup.com>

Horizontal Machining Centers

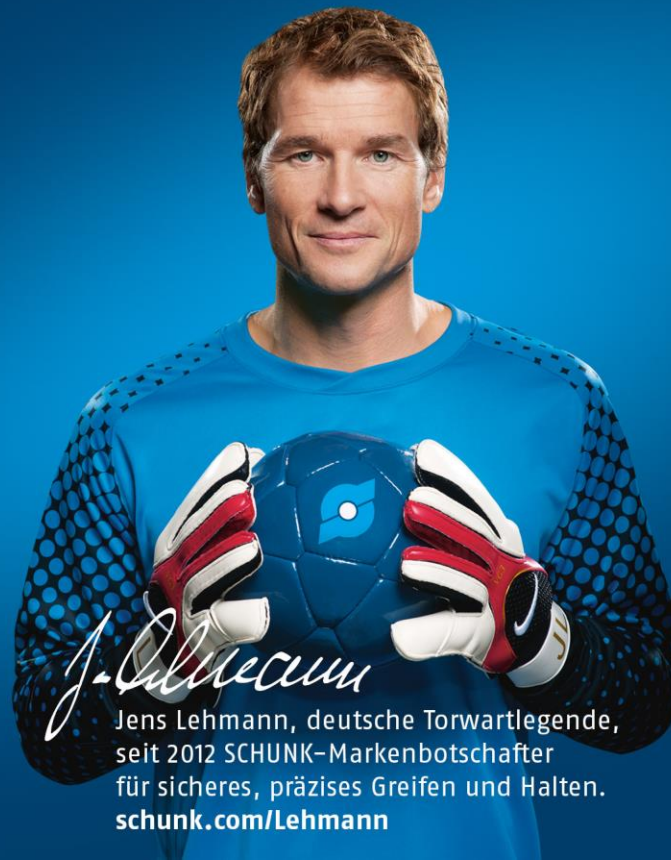
TOYODA



<https://www.toyoda.com>

Superior Clamping and Gripping

SCHUNK ®



J. Lehmann

Jens Lehmann, deutsche Torwartlegende,
seit 2012 SCHUNK-Markenbotschafter
für sicheres, präzises Greifen und Halten.
schunk.com/Lehmann

