



KONTEC KSC mini

Vise for small Workpieces with Jaw Quick-change System

Superior Clamping and Gripping



KONTEC KSC mini

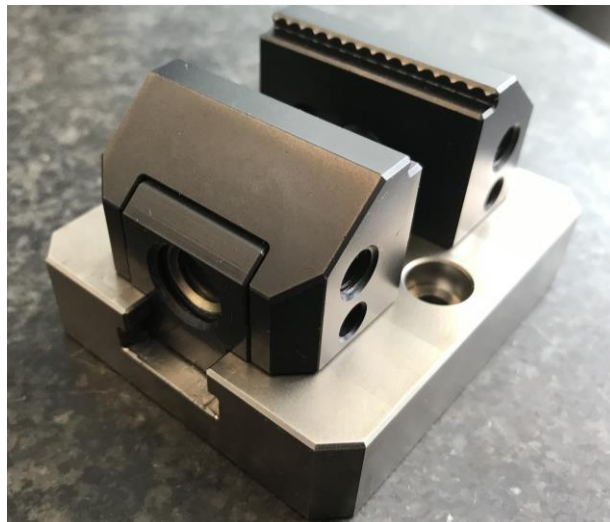
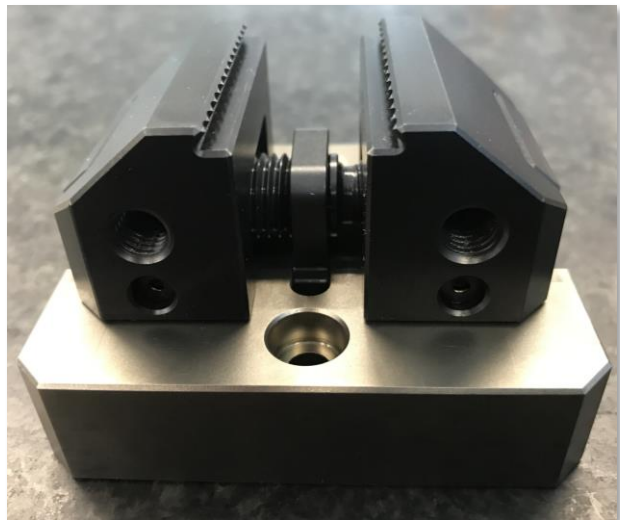
Highlights

- Centric clamping vise for small workpieces
- Jaw quick-change system, completely without tools
- Stainless and hardened base body
- In jaw widths 45 and 70 mm, which can be used on all sizes (LANG vises does not have this ability!)
- Available in the lengths 80 and 100 mm with almost twice as high clamping forces than comparable competitors
- Vise with body length 100 mm is prepared for NSE mini interface V1



KONTEC KSC mini

Highlights



KONTEC KSC mini

Functional diagram

- ① Jaw quick-change system
- ② Stainless and hardened base body
- ③ Operation via hexagon connection
- ④ Spindle drive
- ⑤ Spring loaded pressure piece
- ⑥ Large range of quick-change jaws
- ⑦ Versatile applications for first- and second-side machining



KONTEC KSC mini

Highlights



Jaw quick-change system

Due to the jaw quick-change system, the system jaws of the KSC mini vise can be extremely fast changed over to new system jaws – without any tools at all.



Stainless base body

Stainless and hardened base body.



Several jaw widths can be used

The KSC mini offers the possibility to use different jaw widths of 45 mm and 70 mm depending on the requirements on the vise.

KONTEC KSC mini

Highlights



Mounting options

The KSC mini offers two possibilities to fix both vises on the machine table. Fastening via screws or alignment pins in addition.



VERO-S NSE mini interface

The body length 100 mm the VERO-S NSE mini interface V1 is integrated.

KONTEC KSC mini

Technical data

	ID	Length	Max. Clamping Force	Max. Torque	Weight	Price
		[mm]	[kN]	[Nm]	[kg]	[€]
KSC mini 70-80	1452102	80	16	50	0.9	375,00
KSC mini 70-100	1452103	100	16	50	1.1	425,00

Quick-change jaws	ID	Jaw Width	Clamping Step	Price	VS-Quick-change jaws	ID	Jaw Width	Clamping Step	Price
		[mm]	[mm]	[€]			[mm]	[kN]	[€]
SGWB-G3-B 45-26.5-22	1452105	45	3	45,00	SGVS-G3-B 45-26.5-22	1452074	45	3	45,00
SGWB-G3-B 70-26.5-22	1452106	70	3	60,00	SGVS-G3-B 45-26.5-22	1452075	70	3	60,00
SGWB-S5-B 45-26.5-22	1452107	45	5	55,00	SGVS-S5-B 45-26.5-22	1452076	45	5	55,00
SGWB-S5-B 70-26.5-22	1452108	70	5	70,00	SGVS-S5-B 45-26.5-22	1452077	70	5	70,00

Superior Clamping and Gripping



Jens Lehmann, deutsche Torwartlegende,
seit 2012 SCHUNK-Markenbotschafter
für sicheres, präzises Greifen und Halten.
schunk.com/lehmann