



ROTA TB2-LH

Pneumatic Power Chucks

Superior Clamping and Gripping



Product overview



Gripping Systems

Clamping Technology



Chuck Jaws



Stationary Workholding



Lathe Chucks



Toolholders



Hydraulic Expansion Technology



Manual Lathe Chucks



Power Lathe Chucks with Jaw Quick-change System



Power Lathe Chucks with Through-hole



Power Lathe Chucks without Through-hole



Pneumatic Power Chucks



Steady Rests



Quick-change Systems



Customized Solutions

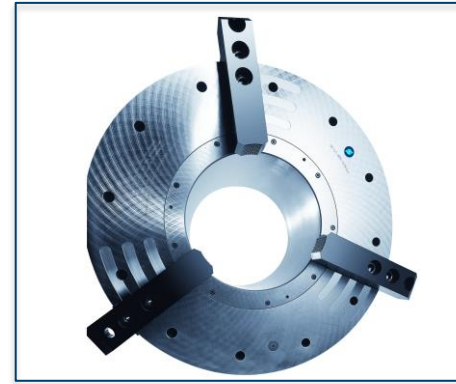
ROTA overview

Pneumatic Power Chucks

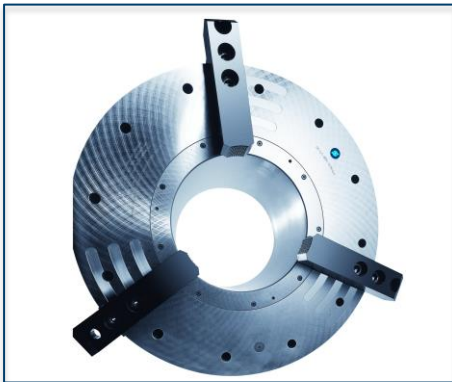
ROTA TP



ROTA TB



ROTA TB-LH



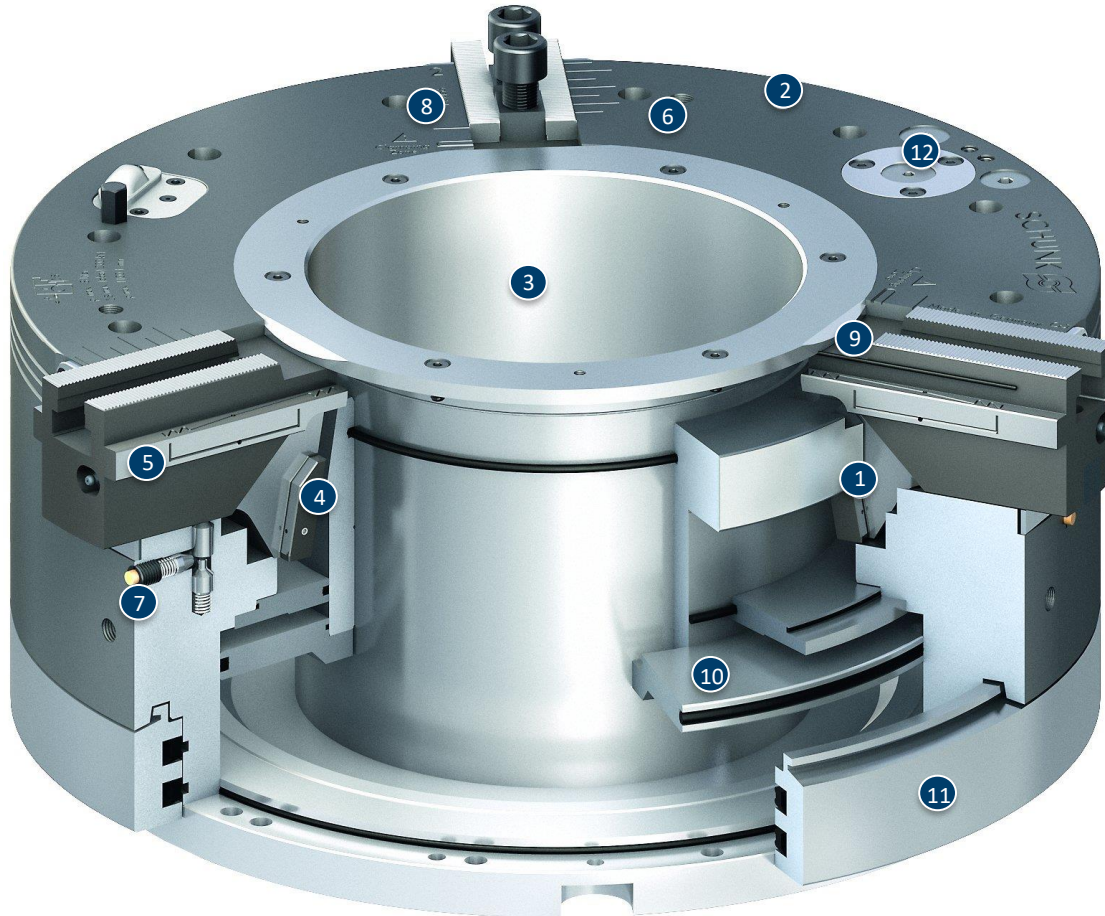
ROTA TB2



ROTA TB2-LH



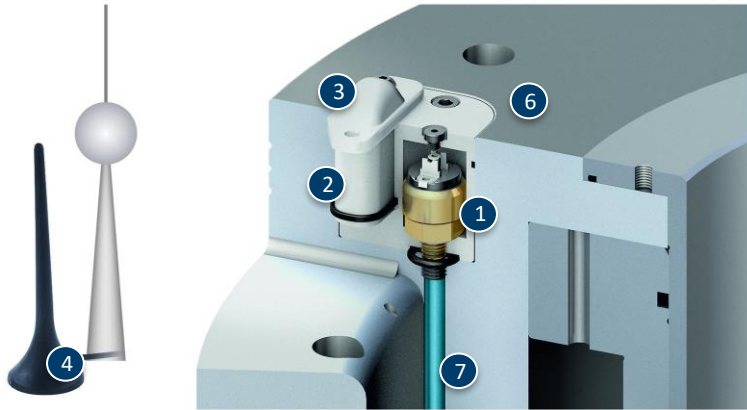
ROTA TB2-LH



- ① Wedge hook drive
- ② Corrosion-resistant, coated and extremely rigid base body
- ③ Very large through-hole
- ④ Dual stroke system
- ⑤ Optimized lubrication system
- ⑥ Mounting threads
- ⑦ Indicator pin
- ⑧ Jaw stroke display
- ⑨ Sealed base jaw guidance
- ⑩ Pneumatic cylinder integrated in the chuck
- ⑪ Static distributor ring
- ⑫ Pressure maintenance valve

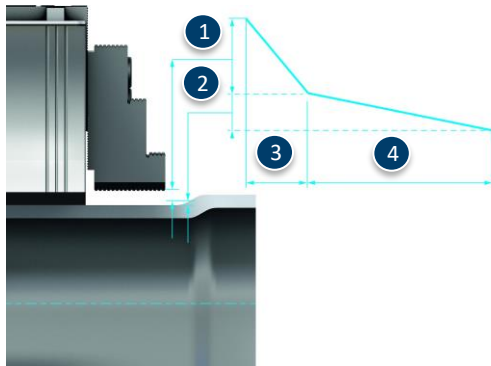
ROTA TB2-LH

RSS-P1: Wireless Clamping Pressure Control



- ① Pressure sensor connected with the cylinder
- ② Transmitter unit
- ③ Protection cover
- ④ Receiver antenna
- ⑤ Receiver
- ⑥ Chuck body ROTA TB2-LH made out of steel
- ⑦ Channel bores

Functional Principle of the Dual Stroke System (Jaw Fast and Clamping Stroke)



- ① Jaw fast stroke
- ② Clamping stroke
- ③ Fast movement
- ④ Slow movement

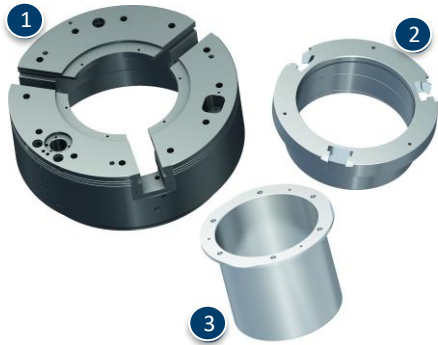
Dual stroke system



- ① Chuck piston
- ② Base jaw
- ③ Jaw fast stroke
- ④ Clamping stroke

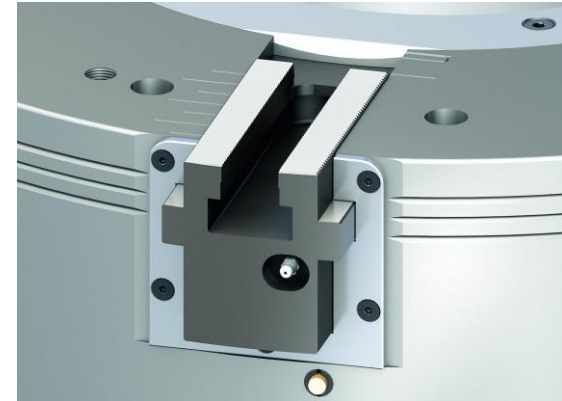
ROTA TB2-LH

Corrosion resistant components

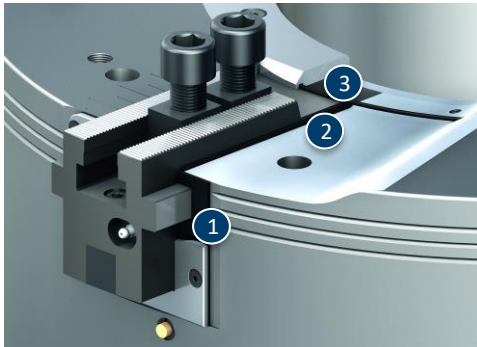


- 1 Body
- 2 Piston
- 3 Center sleeve

Base jaw guidance



Sealed base jaw guidance



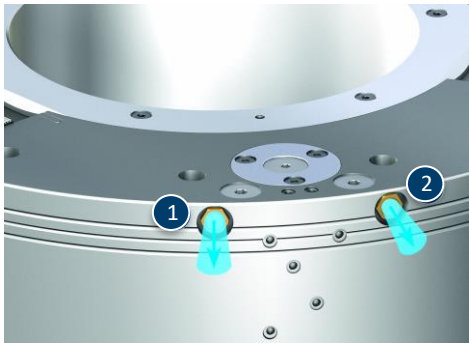
- 1 Front-end profile sealing element
- 2 Sealing element
- 3 O-ring

Optimized lubrication system



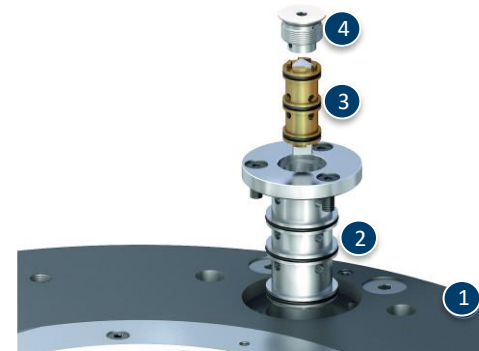
ROTA TB2-LH

Fast ventilation



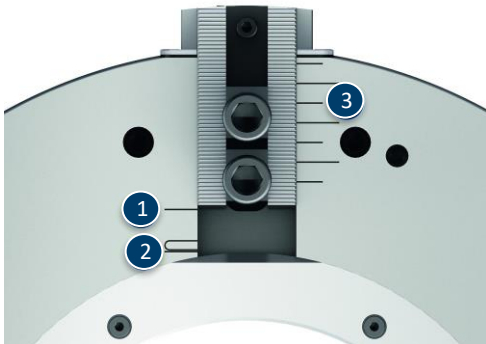
- 1 Escaping air
- 2 Escaping air

Exchangeable valve



- 1 Chuck body
- 2 Valve insert
- 3 Pressure maintenance Valve
- 4 Sealing cap

Jaw stroke display



- 1 Chuck opened
- 2 Clamping stroke range
- 3 Visual display

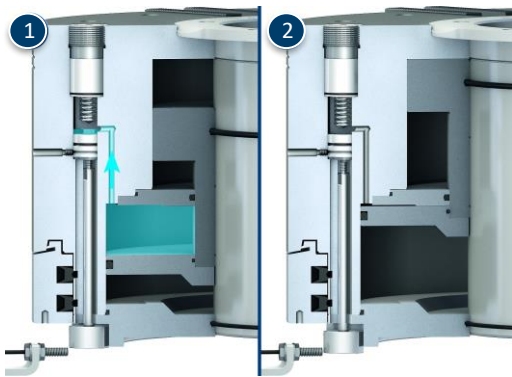
Visual monitoring of the dual stroke system



- 1 Visual indicator pin LH version

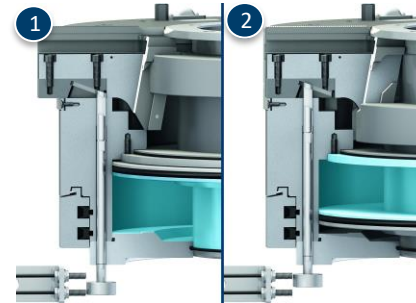
ROTA TB2-LH

Pressure monitoring via sensor (optional)



- 1 Sufficient operating pressure is present
- 2 Pressure loss

Stroke monitoring of the clamping jaws – knowledge whether opened or clamped (optional)



- 1 Chuck completely opened
- 2 Chuck in clamping position on the clamping stroke

Variants ROTA TB2-LH

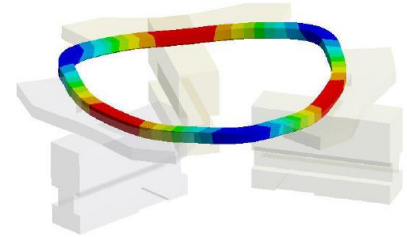
Technische Daten	Max. RPM [min ⁻¹]	Max. clamping force (at 6 bar) [kN]	stroke/jaw [mm]	Through-hole [mm]
ROTA TB2 470-185 LH	1300	115	20	185
ROTA TB2 570-230 LH	1300	220	25.4	230
ROTA TB2 600-275 LH	1100	200	25.4	275
ROTA TB2 630-275 LH	1000	200	38.1	275
ROTA TB2 685-325 LH	900	280	25.4	325
ROTA TB2 850-375 LH	750	240	25.4	375
ROTA TB2 1000-560 LH	500	240	25.4	560

SCHUNK Services



Engineering

- Dimensioning of special plates designed to the manufacturing specifications
- Development of special solutions together with the customer
- FEM analysis for critical components



Testing

- Endurance tests with all new developments
- Abrasion checking
- Measurement of accuracy



Service

- Initial operation of customer's solution
- Inspection and maintenance
- Repairs



Superior Clamping and Gripping



© 2021 SCHUNK GmbH & Co. KG
schunk.com