



# ROTA TP

Pneumatic Power Chucks

Superior Clamping and Gripping



# Product overview



## Gripping Systems

## Clamping Technology



Chuck Jaws



Stationary Workholding



Lathe Chucks



Toolholders



Hydraulic Expansion Technology



Manual Lathe Chucks



Power Lathe Chucks with Jaw Quick-change System



Power Lathe Chucks with Through-hole



Power Lathe Chucks without Through-hole



Pneumatic Power Chucks



Steady Rests



Quick-change Systems



Customized Solutions

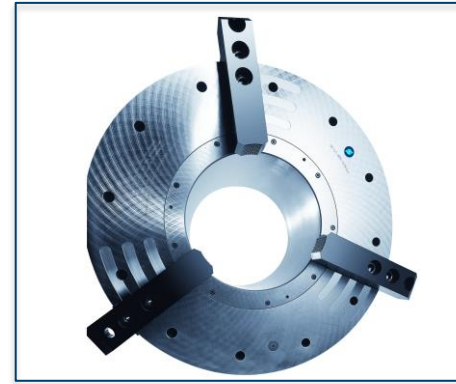
# ROTA overview

## Pneumatic Power Chucks

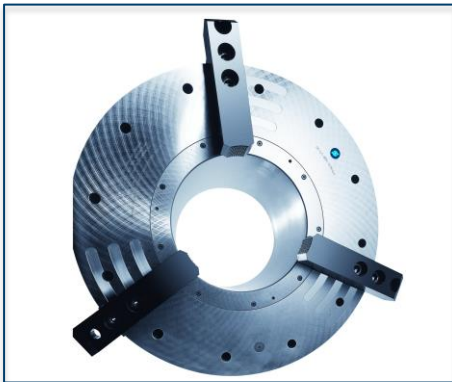
ROTA TP



ROTA TB



ROTA TB-LH



ROTA TB2



ROTA TB2-LH



# ROTA TP

## Example of application



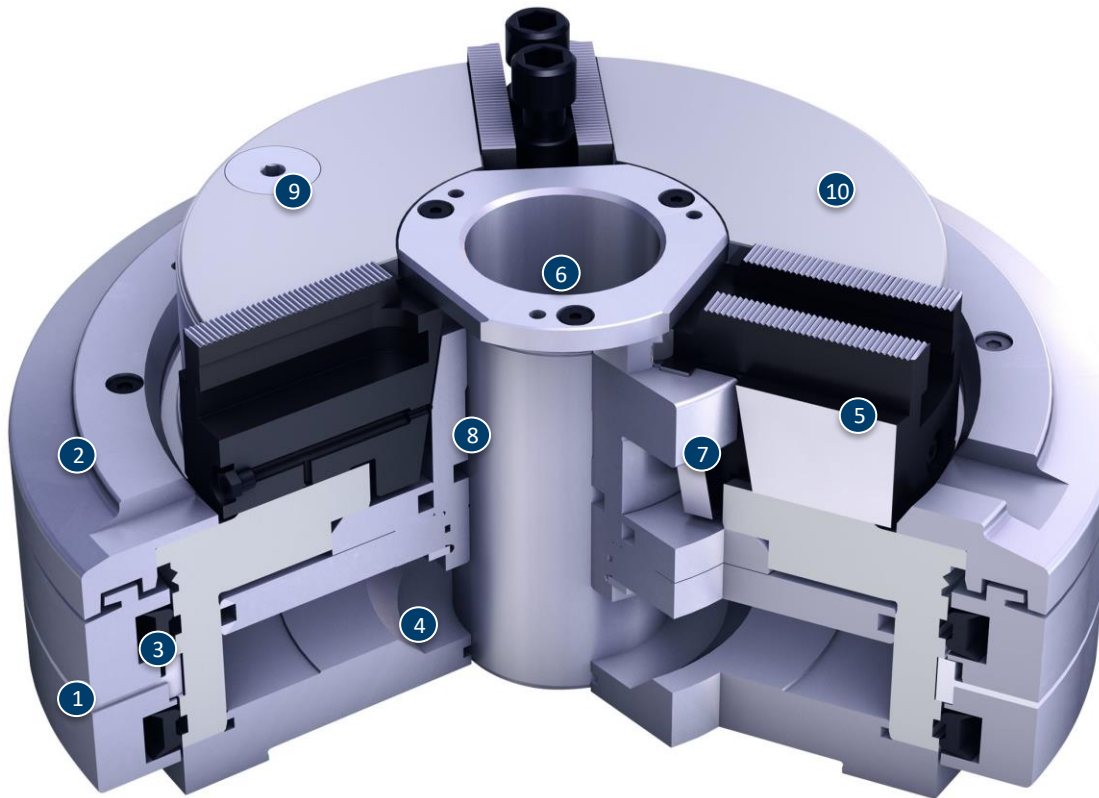
### Clamping device:

ROTA TP 315-115 LH incl. special center sleeve.

### Features/Application:

Pneumatic power chuck with integrated cylinder for O.D. clamping of pipes. Special center sleeve with feed chamfer and high dual stroke system enable save loading of the workpieces.

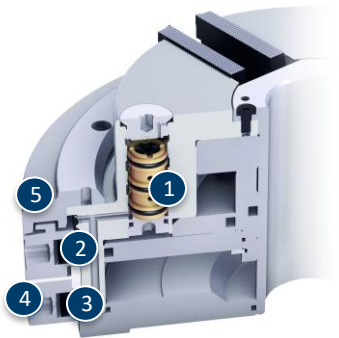
# ROTA TP



- ① Distributor ring
- ② Distributor ring cover
- ③ Profile sealing rings
- ④ Pneumatic cylinder integrated in the chuck
- ⑤ Very stable base jaw
- ⑥ Very large through-hole
- ⑦ Very stable wedge hook
- ⑧ Long piston guidance
- ⑨ Integrated safety valve
- ⑩ One-piece, rigid chuck body

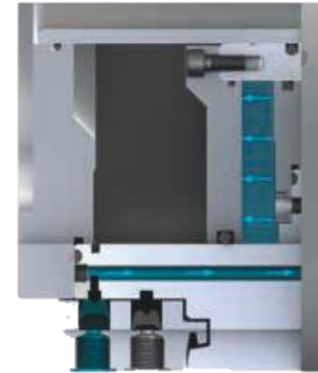
# ROTA TP

## Control of the self-contained power chucks

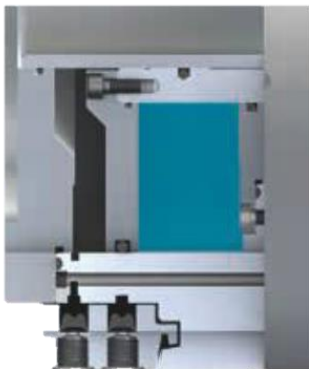


- 1 Double check valve
- 2 Profile sealing ring
- 3 Profile sealing ring
- 4 Distributor ring
- 5 Distributor ring cover

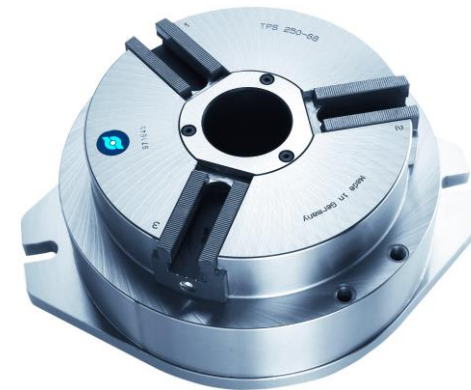
## Clamping and opening is only possible at standstill



## The SCHUNK profile seal lifts itself through its own elasticity



## Also available for stationary applications



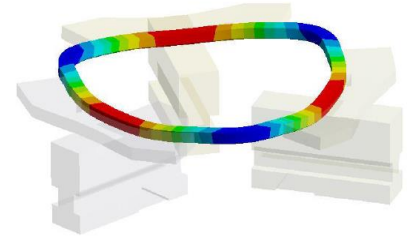
# Variants ROTA TP

Technical Data	Max. RPM 1 [min <sup>-1</sup> ]	Max. clamping force (at 6 bar) [kN]	Stroke/jaw [mm]	Through-hole [mm]
ROTA TP 125-26	4000	22	3	26
ROTA TP 160-38	3500	39	4.2	38
ROTA TP 200-52	2800	68	4.2	52
ROTA TP 250-68	2200	105	5	68
ROTA TP 315-90	1800	140	5	90
ROTA TP 315-105	2200	100	5	105
ROTA TP 350-115	2200	90	5	115
ROTA TP-LH 350-115	2200	90	15	115

# SCHUNK Services

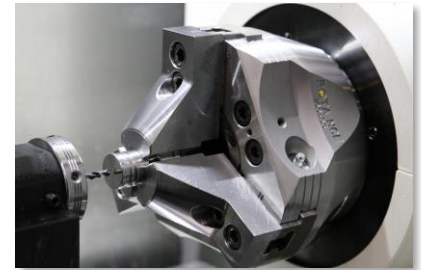
## Engineering

- Dimensioning of special plates designed to the manufacturing specifications
- Development of special solutions together with the customer
- FEM analysis for critical components



## Testing

- Endurance tests with all new developments
- Abrasion checking
- Measurement of accuracy



## Service

- Initial operation of customer's solution
- Inspection and maintenance
- Repairs



Superior Clamping and Gripping



© 2021 SCHUNK GmbH & Co. KG  
schunk.com