

MAGNOS MSC

Magnetic Clamping Technology

Superior Clamping and Gripping



Product Overview



Gripping Systems

Clamping Technology



Chuck Jaws



Lathe Chucks



Stationary Workholding



Toolholders



Hydraulic Expansion Technology



VERO-S



TANDEM



ROTA



KONTEC



Tombstones

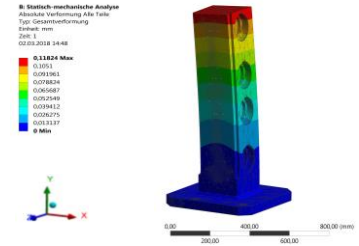


MAGNOS

SCHUNK Services

Engineering

- Dimensioning of special plates designed to the manufacturing specifications
- Development of special solutions together with the customer
- FEM analysis for critical components



Testing

- Endurance tests with all new developments
- Abrasion checking
- Measurement of accuracy

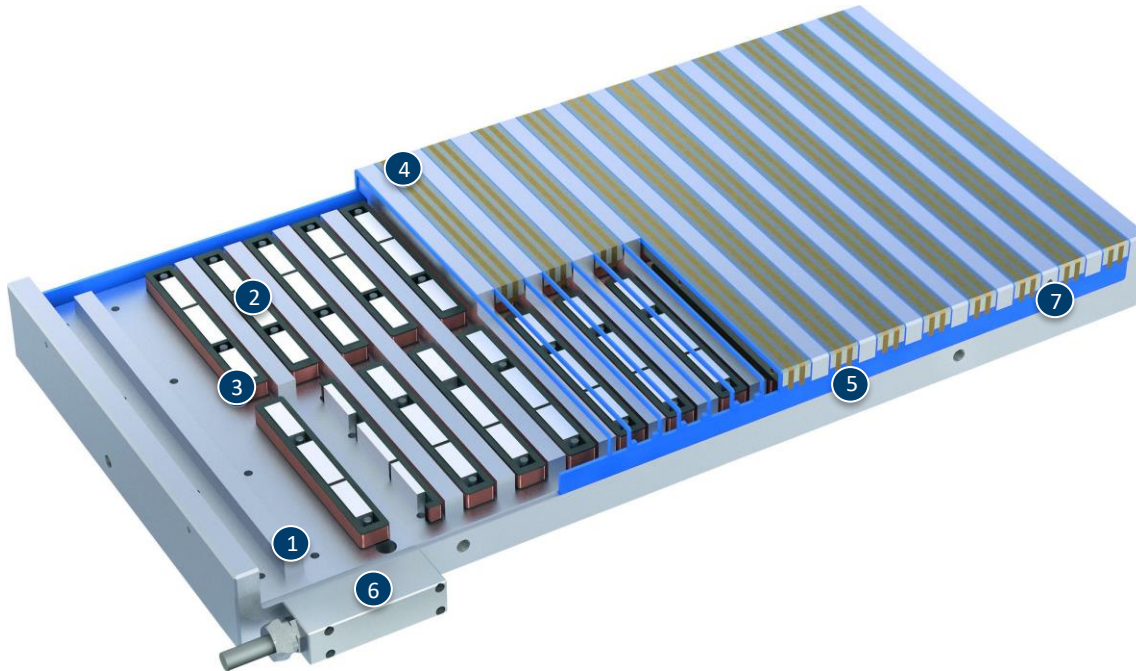


Service

- Initial operation of customer's solution
- Inspection and maintenance
- Repairs

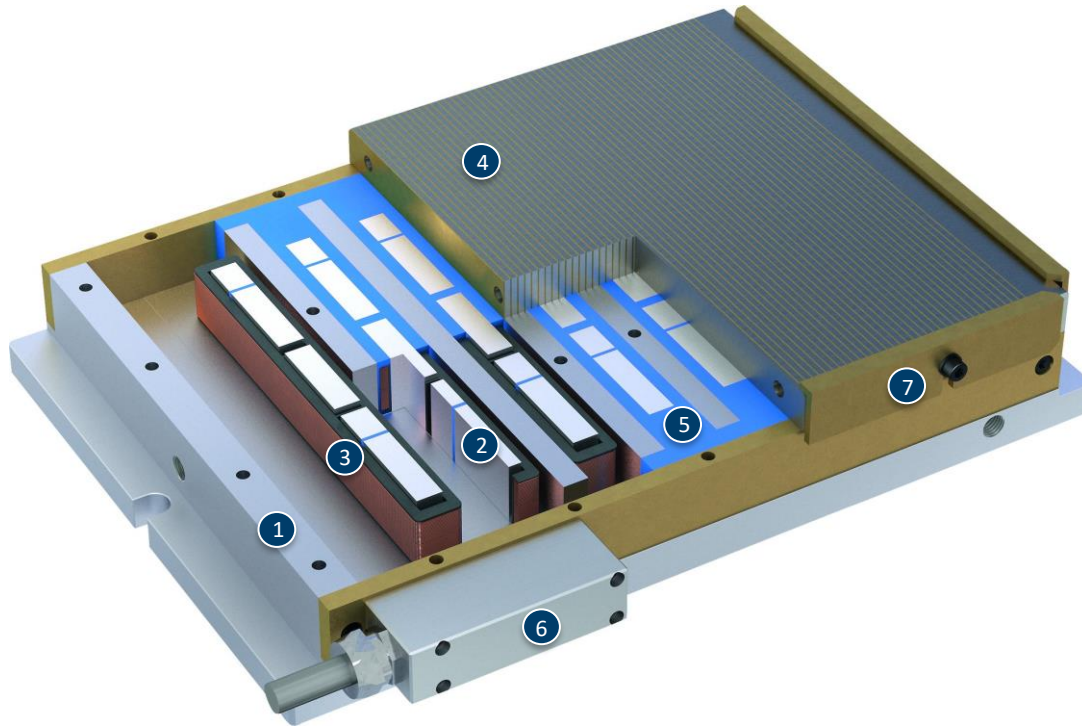


MAGNOS MSC-PM60D



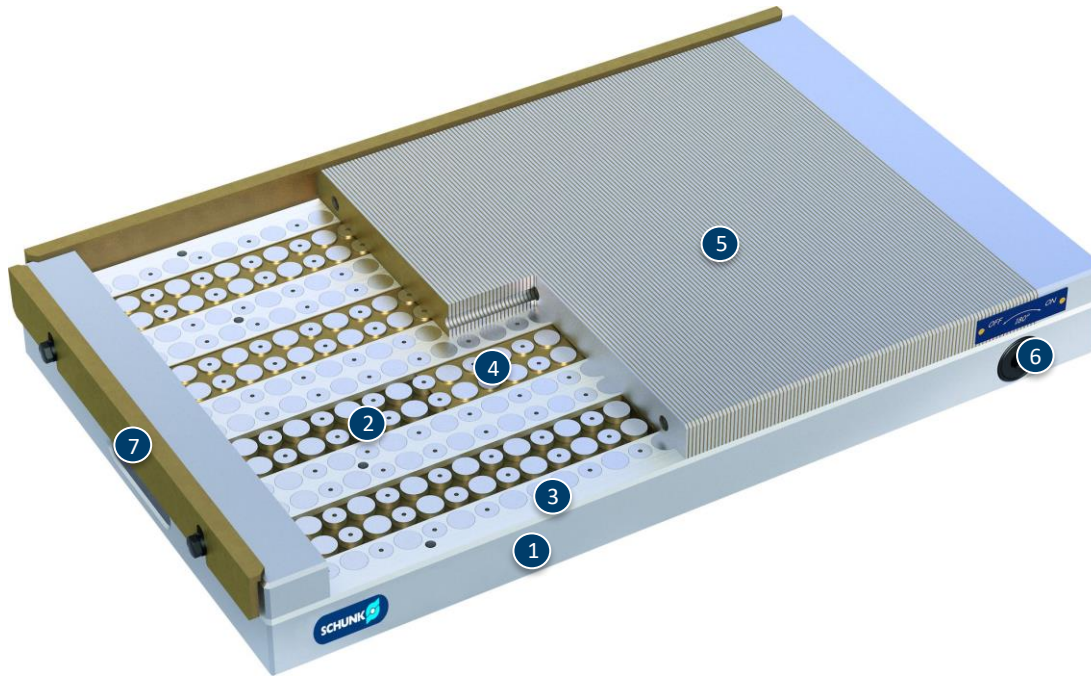
- ① Solid base body
- ② Invertible AlNiCo magnets
- ③ Coil body, insulated version
- ④ Support segments
- ⑤ Synthetic resin grouting
- ⑥ Connection housing
- ⑦ Thread for stops

MAGNOS MSC-PM62F



- ① Solid base body
- ② Invertible AlNiCo magnets
- ③ Coil body, insulated version
- ④ Support plate
- ⑤ Synthetic resin grouting
- ⑥ Connection housing
- ⑦ Workpiece stop bar

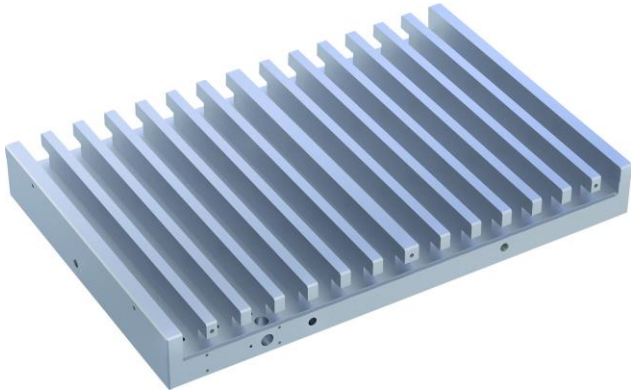
MAGNOS MSC-PM15



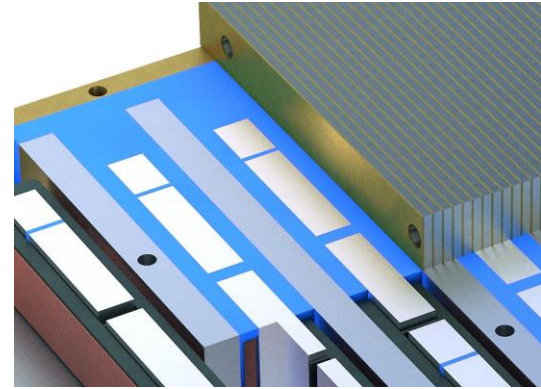
- ① Solid base body
- ② Permanent magnets with different polarity
- ③ Aluminum segments
- ④ Brass segments
- ⑤ Support plate
- ⑥ Connection with hexagon socket
- ⑦ Workpiece stop bar

MAGNOS MSC

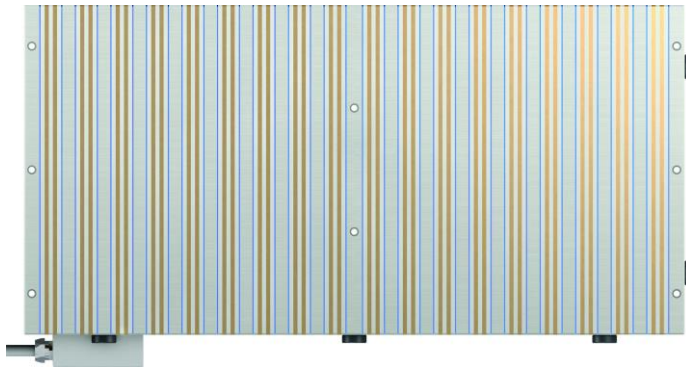
Solid base body



Synthetic resin filling



Through-bores



KEH P control unit



Variants of MAGNOS MSC



Technical data	MSC-PM60D	MSC-PM62F	MSC-PM15	MSC-PM35
L [mm]				
B [mm]				
H [mm]	71	81	52 / 60	68 / 78
Max. clamping force [N/cm ²]	75	75	75	80
Pole pitch	5 mm + 5 mm	3 mm + 0.8 mm	1.5 mm + 0.8 mm	
Number of poles				10, 12, 14, 18
Connection	4-PIN	4-PIN		
Amount of channels	1	1		

Superior Clamping and Gripping



© 2021 SCHUNK GmbH & Co. KG
schunk.com