

MAGNOS MTR I MGT

Magnetic Clamping Technology

Superior Clamping and Gripping



Product Overview



Gripping Systems

Clamping Technology



Chuck Jaws



Lathe Chucks



Stationary Workholding



Toolholders



Hydraulic Expansion Technology



VERO-S



TANDEM



ROTA



KONTEC



Tombstones

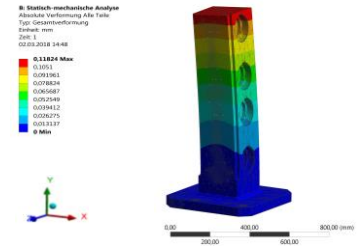


MAGNOS

SCHUNK Services

Engineering

- Dimensioning of special plates designed to the manufacturing specifications
- Development of special solutions together with the customer
- FEM analysis for critical components



Testing

- Endurance tests with all new developments
- Abrasion checking
- Measurement of accuracy

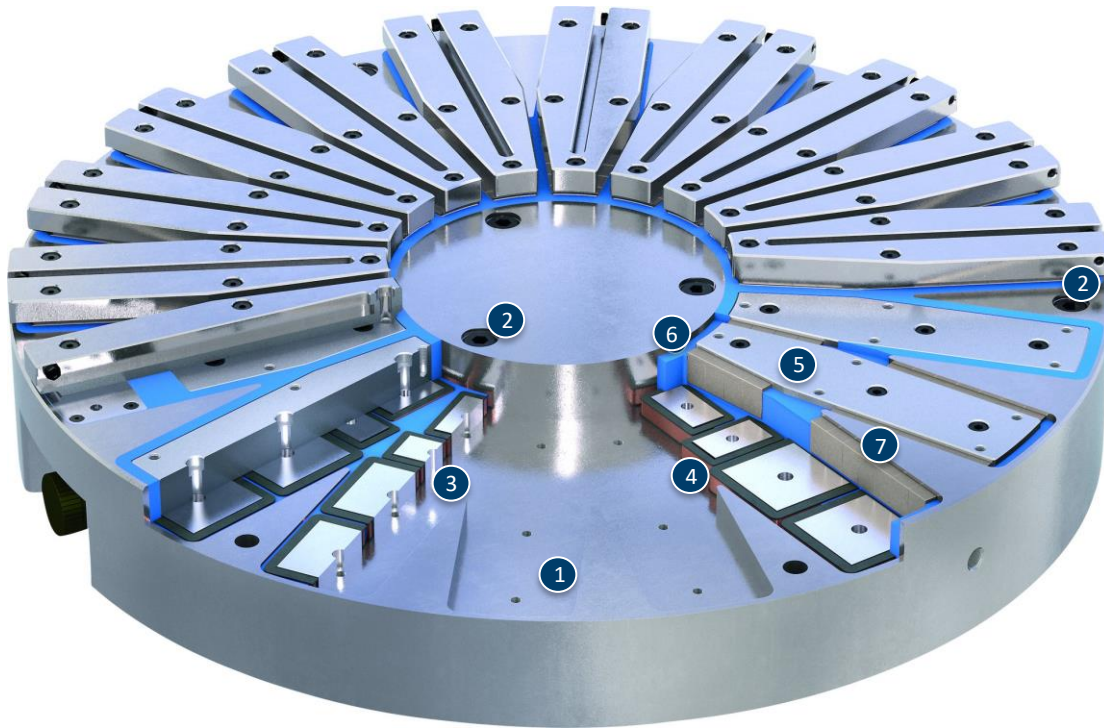


Service

- Initial operation of customer's solution
- Inspection and maintenance
- Repairs

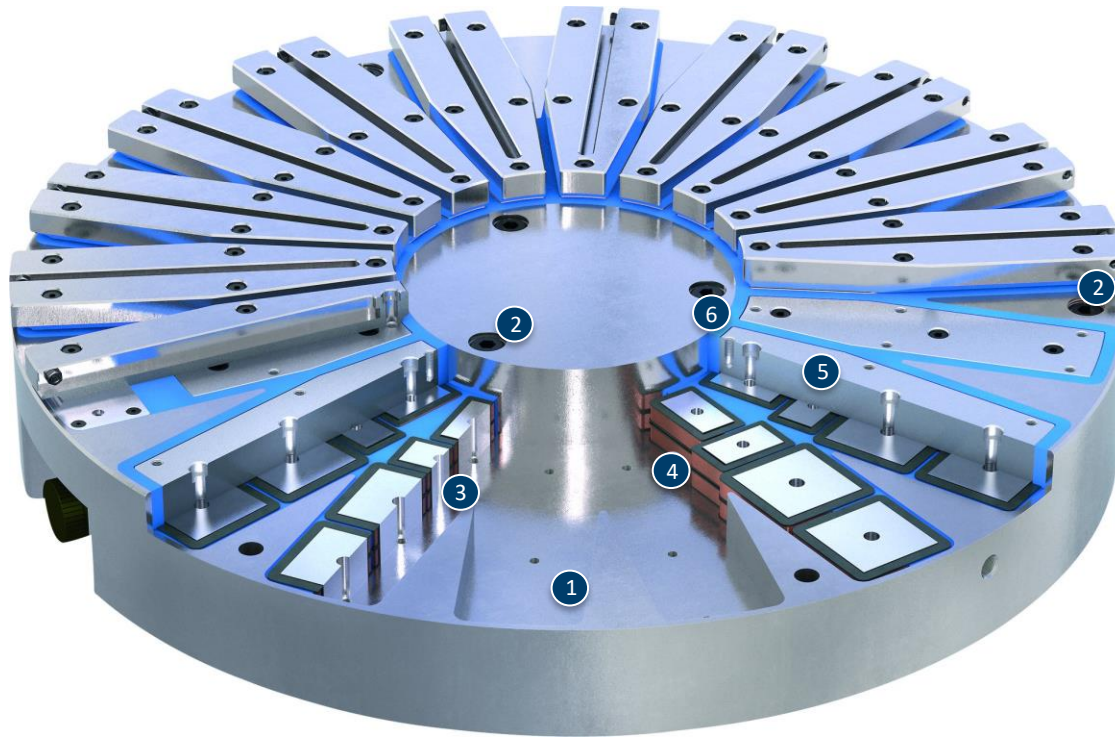


MAGNOS MTR



- ① Solid base body
- ② Fastening bore
- ③ Invertible AlNiCo magnets
- ④ Coil body, insulated version
- ⑤ Steel pole
- ⑥ Synthetic resin grouting
- ⑦ Neodymium magnets

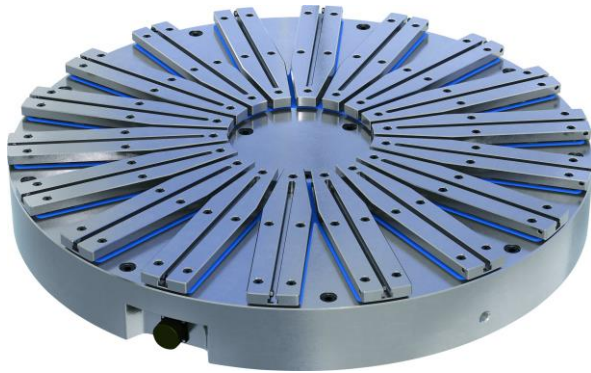
MAGNOS MGT



- ① Solid base body
- ② Fastening bore
- ③ Invertible AlNiCo magnets
- ④ Coil body, insulated version
- ⑤ Steel pole
- ⑥ Synthetic resin grouting

MAGNOS MTR/MGT

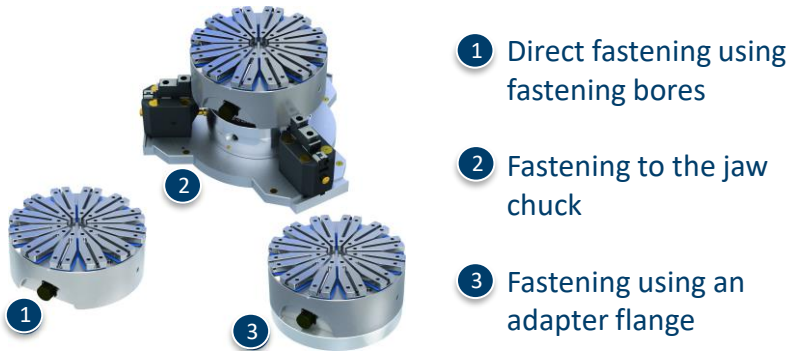
Function and mode of operation



Variant IC



Mounting options



Pole extensions

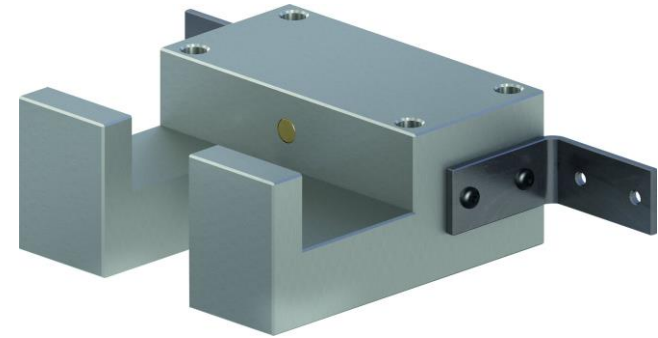


MAGNOS MTR/MGT

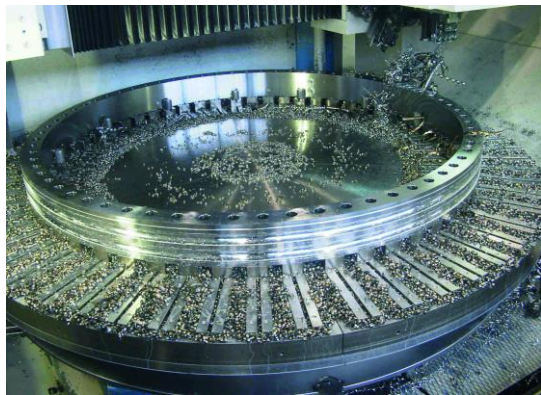
Shortest possible set-up times and a resulting increase in productivity



Docking station



Special sizes



Variants of MAGNOS MTR/MGT

Technical data	MTR-IC	MGT-IC
ØAD [mm]		
ØID [mm]		
H [mm]	158 / 142	158 / 142
Max. clamping force [N/cm ²]	160	160
Number of poles	12 / 18	12 / 18 / 24 / 32
Connection	7-PIN	7-PIN / ILME
Amount of channels	1 / 2	1 / 3 / 6 / 8
Max. RPM [min ⁻¹]	400 – 1000	240 – 650

Superior Clamping and Gripping



© 2021 SCHUNK GmbH & Co. KG
schunk.com