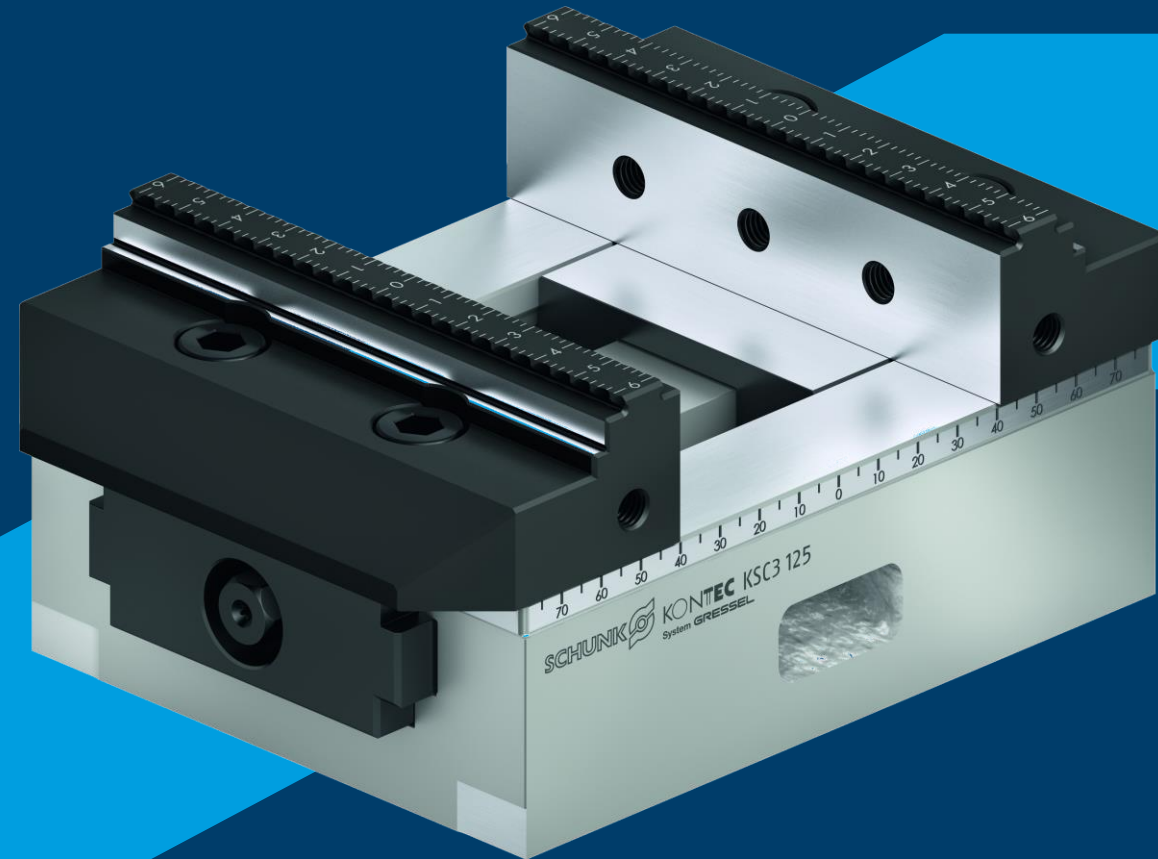


KONTEC KSC₃



Proven maximum Precision with
even higher Process Reliability



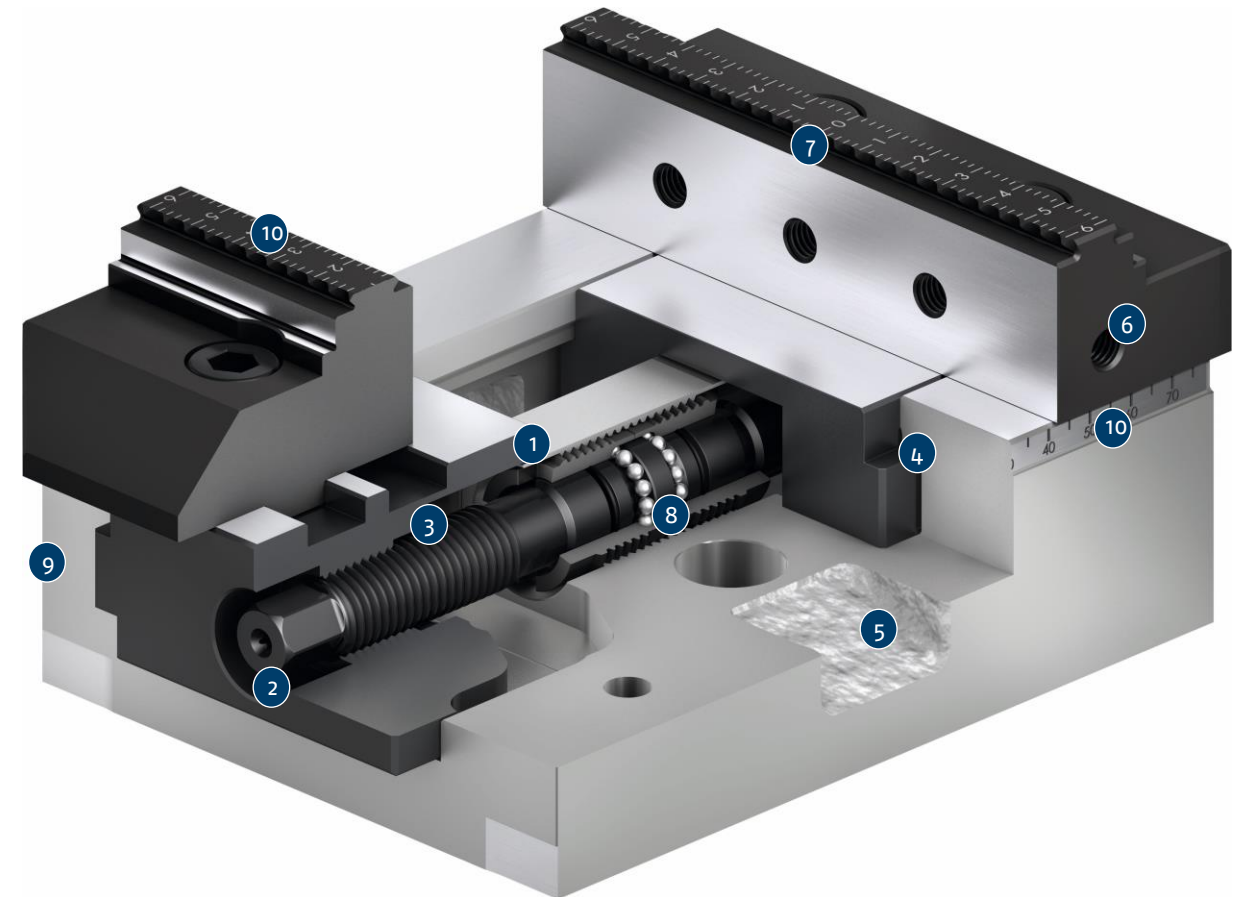
Hand in hand for tomorrow

Highlights

- + Nickel-plated base body for optimal corrosion protection
- + High clamping forces and high precision
- + Optimized interfering contour for some sizes
- + Wide range of system and top jaws
- + Laser-etched ruler
- + Large clamping range

Sectional diagram

- 1 Closed System
- 2 Recessed hexagonal connection
- 3 Spindle drive
- 4 Long slide
- 5 Drainage slots
- 6 Mounting threads
- 7 System jaws with grip step and smooth clamping surface
- 8 Ball bearing mounted, backlash free spindle
- 9 Low height
- 10 Laser-etched ruler



System jaws

Reversible grip jaw Reversible jaw carbide-grip Reversal jaw soft-grip Reversible jaw with embossed profile



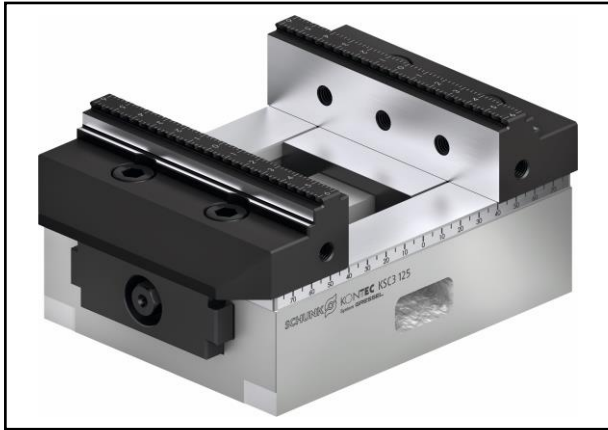
Reversible jaw Alu jaw Swivel and Adapter plate 5-axis jaw



Combi jaw 6-fold jaw system Prismatic jaw Central jaw grip

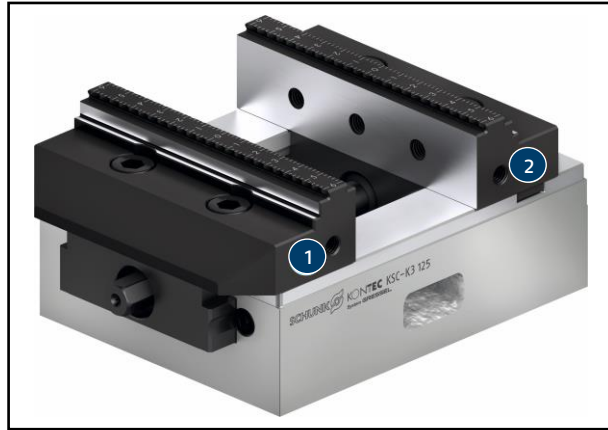


Versions



Centric Clamping Vise

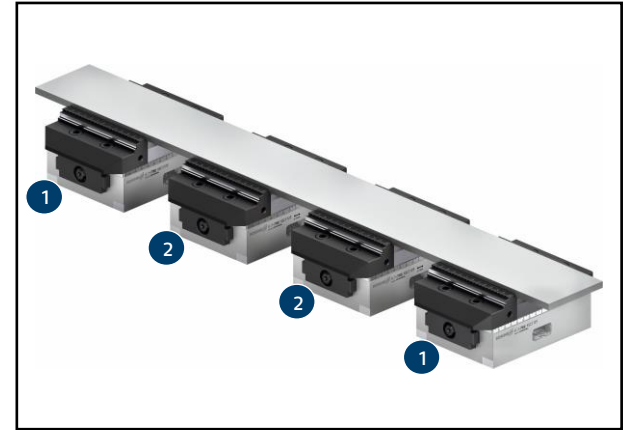
The KSC3 is a centric clamping vise in the standard version.



Single-Acting Vise

Specifically for the second-side machining, the KSC3 is also available as a single-acting vise. The base body of the KSC-K3 has a fixed jaw with a continuous traverse groove in the base body.

- 1 Movable jaw
- 2 Fixed jaw



Floating Version

Due to the compensation, the system jaws contact the workpiece and hold it in position. This counteracts vibrations and deformations when clamping long workpieces.

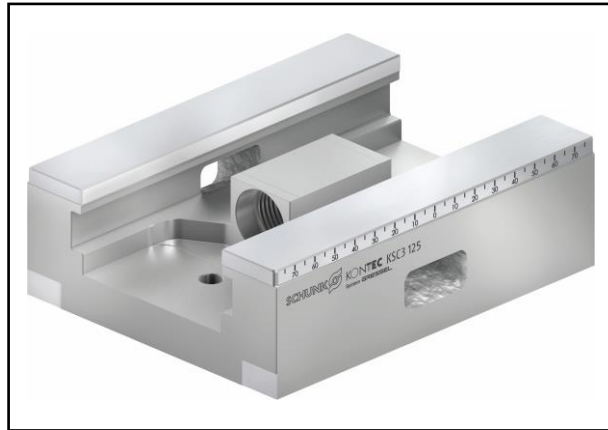
- 1 Centric vise
- 2 Floating version

Highlights



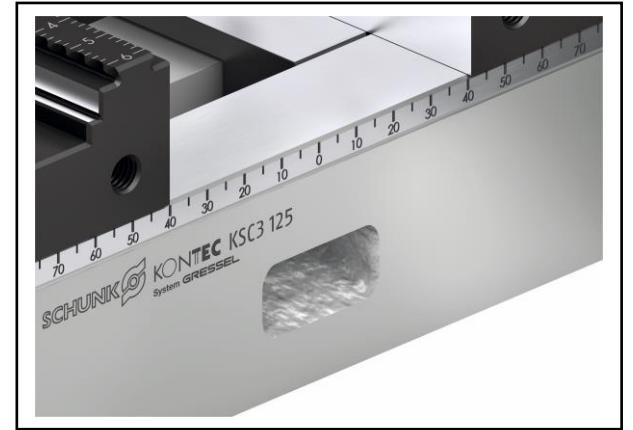
100% compatibility with the KSC generation

The clamping vises of the KSC3 generation are 100% compatible with the clamping vises of the KSC generation.



Nickel-plated base body

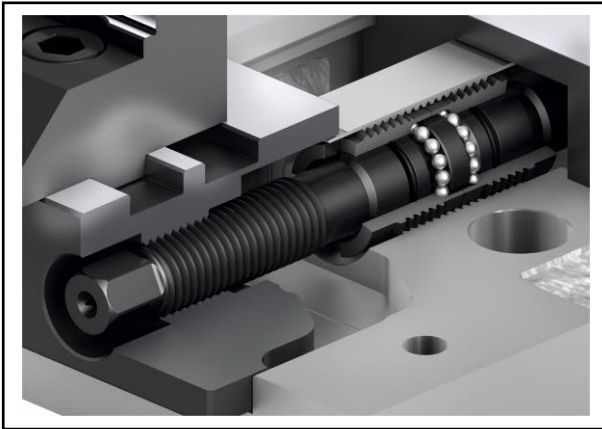
For the best corrosion protection the base body of the KSC3 has been completely nickel-plated.



Laser-etched ruler

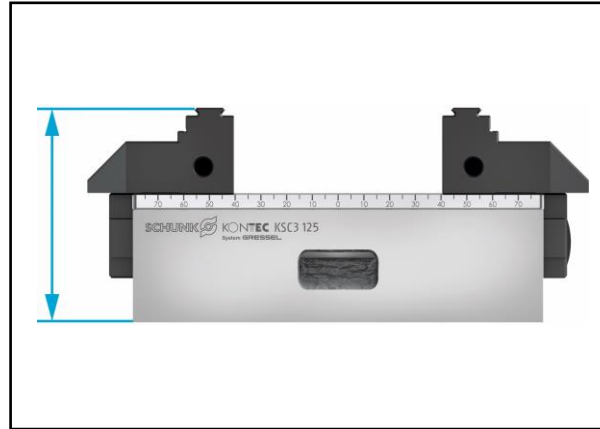
For easier alignment of the system jaws and workpieces the KSC3 has laser-cut scales on the base body and on the system jaws.

Highlights



Closed System

The spindle is always sealed, regardless of the clamping position. Therefore the spindle drive is protected against chips and coolant.



Extremely flat design

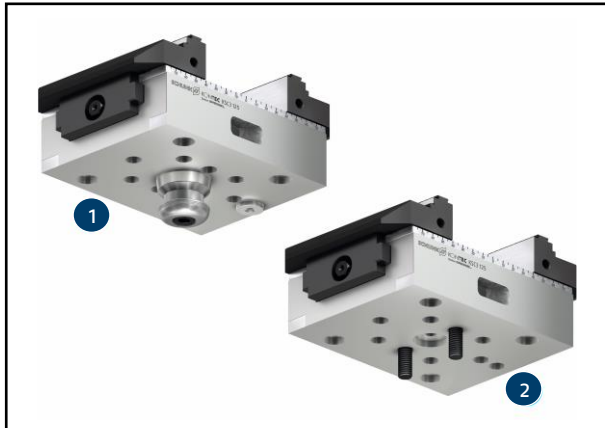
The KSC3 only takes up a small amount of space and offers best accessibility for 5-sided machining.



Jaw change with just two screws

The system jaws can be changed very quickly and easily by loosening just two screws.

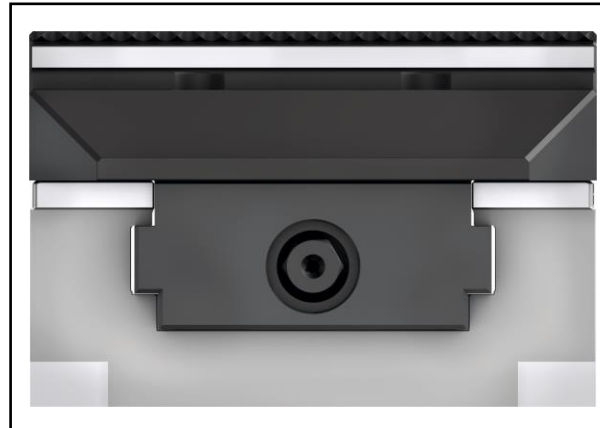
Highlights



Mounting options

The KSC3 offers several options for mounting on the machine table, which are built into the base body.

- ① Befestigung über Nullpunktspannsystem
- ② Befestigung über Schrauben



Sealing of the jaw guidance

The base jaw is fitted with high precision in the base jaw guidance. This results in minimal gap dimensions and optimal protection against falling chips.



Visual marking of the end position

The end position of the KSC3 are visually marked. This means that the end position can be determined quickly.

Highlights



Improved interfering contour

The hexagonal connection has been countersunk in the base body for sizes 80–130, 125–160 and 160–280.



Optimal Accessibility

By using brackets, the clamping vises can be lifted off the machine table. This allows improved accessibility of the machine spindle to the workpiece.

Video



Technical data

Description	ID	Vise width [mm]	Max. clamping force [kN]	Max. torque [Nm]	Length compensation [mm]	Repeat accuracy [mm]	Weight [kg]
KSC3 80-130	1508857	80	25	90		±0,01	3,1
KSC3 80-130-S	1514209	80	25	90	±3	±0,01	3,1
KSC3 grip 80-130	1514206	80	25	90		±0,01	3,9
KSC3 80-190	1514208	80	25	90		±0,01	4,5
KSC3 80-190-S	1514220	80	25	90	±3	±0,01	4,5
KSC3 grip 80-190	1514207	80	25	90		±0,01	5,5

Technical data

Description	ID	Vise width [mm]	Max. clamping force [kN]	Max. torque [Nm]	Length compensation [mm]	Repeat accuracy [mm]	Weight [kg]
KSC3 125-160	1514241	125	35	100		±0,01	6,3
KSC3 125-160-S	1514247	125	35	100	±5	±0,01	6,5
KSC3 grip 125-160	1514238	125	35	100		±0,01	8,7
KSC3 125-235	1514242	125	35	100		±0,01	9,5
KSC3 125-235-S	1514248	125	35	100	±5	±0,01	9,5
KSC3 grip 125-235	1514239	125	35	100		±0,01	12
KSC3 125-300	1514246	125	35	100		±0,01	12,5
KSC3 125-300-S	1514249	125	35	100	±5	±0,01	12,5
KSC3 grip 125-300	1514240	125	35	100		±0,01	14,5

Technical data

Description	ID	Vise width [mm]	Max. clamping force [kN]	Max. torque [Nm]	Length compensation [mm]	Repeat accuracy [mm]	Weight [kg]
KSC ₃ 160-280	1514250	160	50	175		±0,015	25
KSC ₃ 160-280-S	1514255	160	50	175	±5	±0,015	25
KSC ₃ 160-480	1514254	160	50	175		±0,015	35
KSC ₃ 160-480-S	1514256	160	50	175	±5	±0,015	35



Hand in hand for tomorrow

© SCHUNK GmbH & Co. KG
Schunk.com